

1625 OAK STREET

SUITE #201 & #206 | KANSAS CITY, MO

» 543-1,337 SF | \$18.75 - 23.33/SF

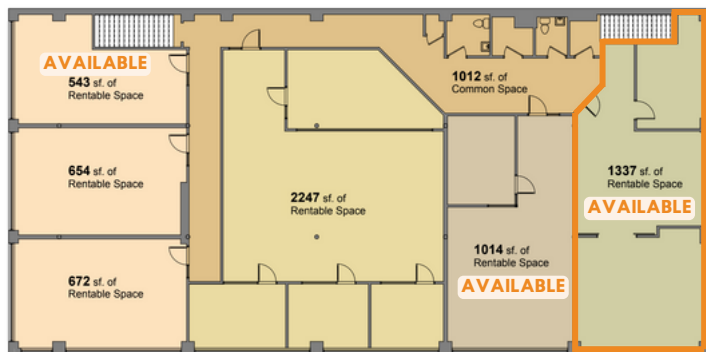
OFFERING SUMMARY

LEASE RATE:	\$18.75 - 23.33 / SF / YR
LEASE TYPE:	Modified Gross
YEAR BUILT:	1955
PARKING SPACES:	3+ surface @ \$85.00/month
MARKET:	Kansas City
SUBMARKET:	Freight House District
CPD:	6,731 on 17th Street

PROPERTY HIGHLIGHTS

- Office/Retail
- Energetic Crossroads Art District Location
- Huge windows
- Wood floors & exposed ceilings
- Adjacent Parking Available
- Within walking distance to T-Mobile Center and Power & Light District, local lunch break favorites, coffee and KC's beloved jazz clubs

2ND FLOOR PLAN



SPACE HIGHLIGHTS

Fully built-out and move-in ready office space that includes a conference room, private offices, and open space. The space is naturally well-lit and the exposed brick and hardwood floors offer a cool Crossroads appeal.

At the intersection of Oak and 17th, you're right by all the local East Crossroads hits such as Parlor, Mission Taco, Hi-Tides Coffee Shop, King G, Mean Mule Distillery, Christopher Elbow Chocolates, multiple breweries, and more!

