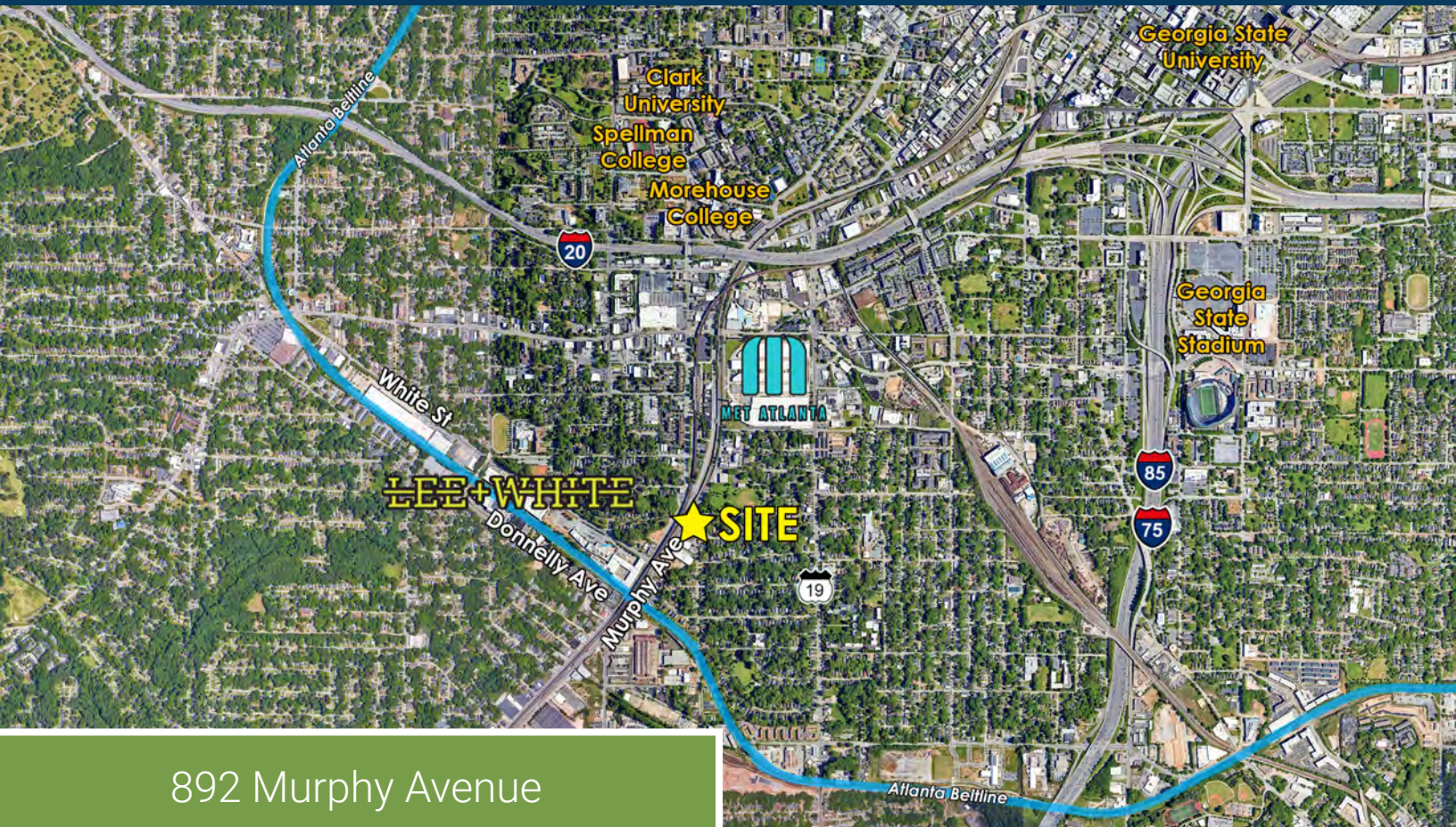


# 5,706± sf Industrial Building For Sale



892 Murphy Avenue  
Atlanta, GA 30310



## Property Details

- 5,706± sf industrial building on a 0.40± ac tract.
- Fenced yard
- 3 drive-in doors
- Zoned I1
- Located within 1/4 mile of Murphy Crossing planned development
- Located in a re-developing area near I-20, West End Mall, Adair Park, Lee + White, The Met, and The Atlanta Beltline
- Priced at \$1,250,000 (\$219/sf).

**Peyton McWhirter**  
678.385.2705  
pmm@mcwrealty.com

No warranty or representation, express or implied, is made as to the accuracy of the information contained herein, and same is subject to errors, omissions, change of price, rental or other conditions, withdrawal without notice, and to any special listing conditions, imposed by our principals.

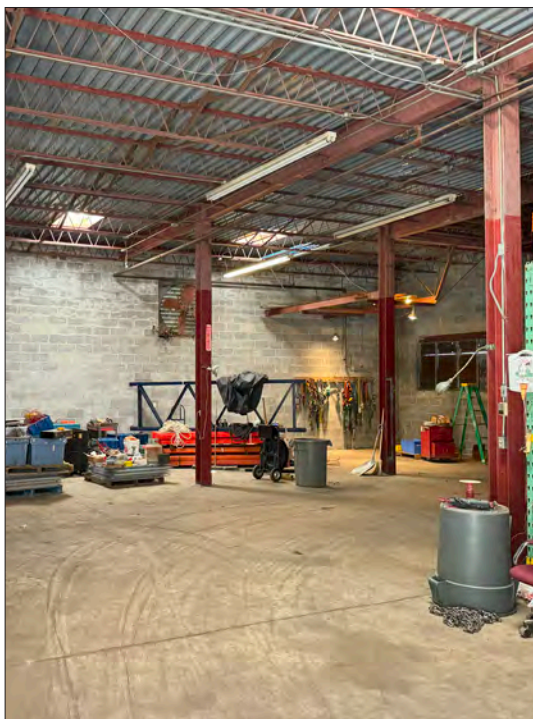
**McWhirter Realty Partners, LLC**  
294 Intersate North Circle, SE  
Bldg 2, Suite 150  
Atlanta, GA 30339  
770.955.2000  
www.mcwrealty.com



**McWhirter**  
Commercial Real Estate Since 1981



892 Murphy Avenue  
Atlanta, GA 30310



**Peyton McWhirter**  
678.385.2705  
pmm@mcwrealty.com

No warranty or representation, express or implied, is made as to the accuracy of the information contained herein, and same is subject to errors, omissions, change of price, rental or other conditions, withdrawal without notice, and to any special listing conditions, imposed by our principals.

**McWhirter Realty Partners, LLC**  
294 Intersate North Circle, SE  
Bldg 2, Suite 150  
Atlanta, GA 30339  
770.955.2000  
www.mcwrealty.com



**McWhirter**  
Commercial Real Estate Since 1981