

FOR LEASE



2400 RIVER ROAD - EUGENE, OR 97404

GROUND FLOOR OFFICE SPACE

- HIGH TRAFFIC/VISIBILITY
- SECURE BUILDING
- AMPLE PARKING
- BREAK ROOM & SHARED KITCHEN
- 2 RESTROOMS
- MULTIPLE ACCESS POINTS
- (8) EXECUTIVE OFFICES AVAILABLE FROM \$500-\$950 OR
3,204 SF AVAILABLE FOR A SINGLE TENANT @ \$1.75/PSF FULLY SERVICED

For more information contact:



BILLY POLLOCK
billy@campbellre.com | (541) 285-8865

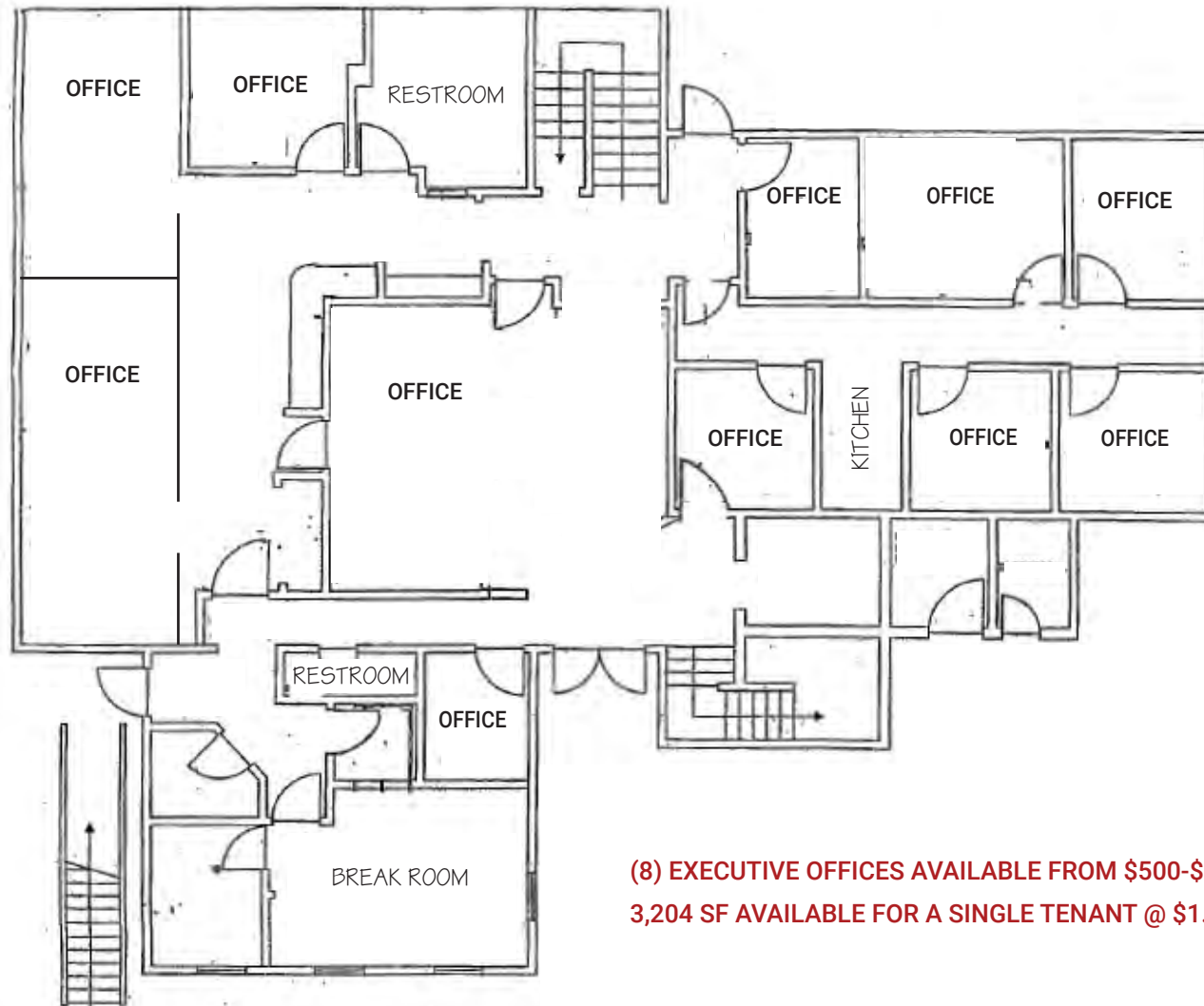
Licensed in the State of Oregon

BEN WANICHEK
benw@campbellre.com | (541) 520-0067

Licensed in the State of Oregon

The information in this package was obtained from sources deemed reliable, and is not guaranteed by agent. Package is subject to change, error or omission, prior sale or lease, correction or withdrawal. Any party contemplating purchase is urged to conduct their own independent study and inspection.

MAIN LEVEL FLOOR PLAN



**(8) EXECUTIVE OFFICES AVAILABLE FROM \$500-\$950 OR
3,204 SF AVAILABLE FOR A SINGLE TENANT @ \$1.75/PSF FULLY SERVICED**

BUILDING INTERIOR PHOTOS

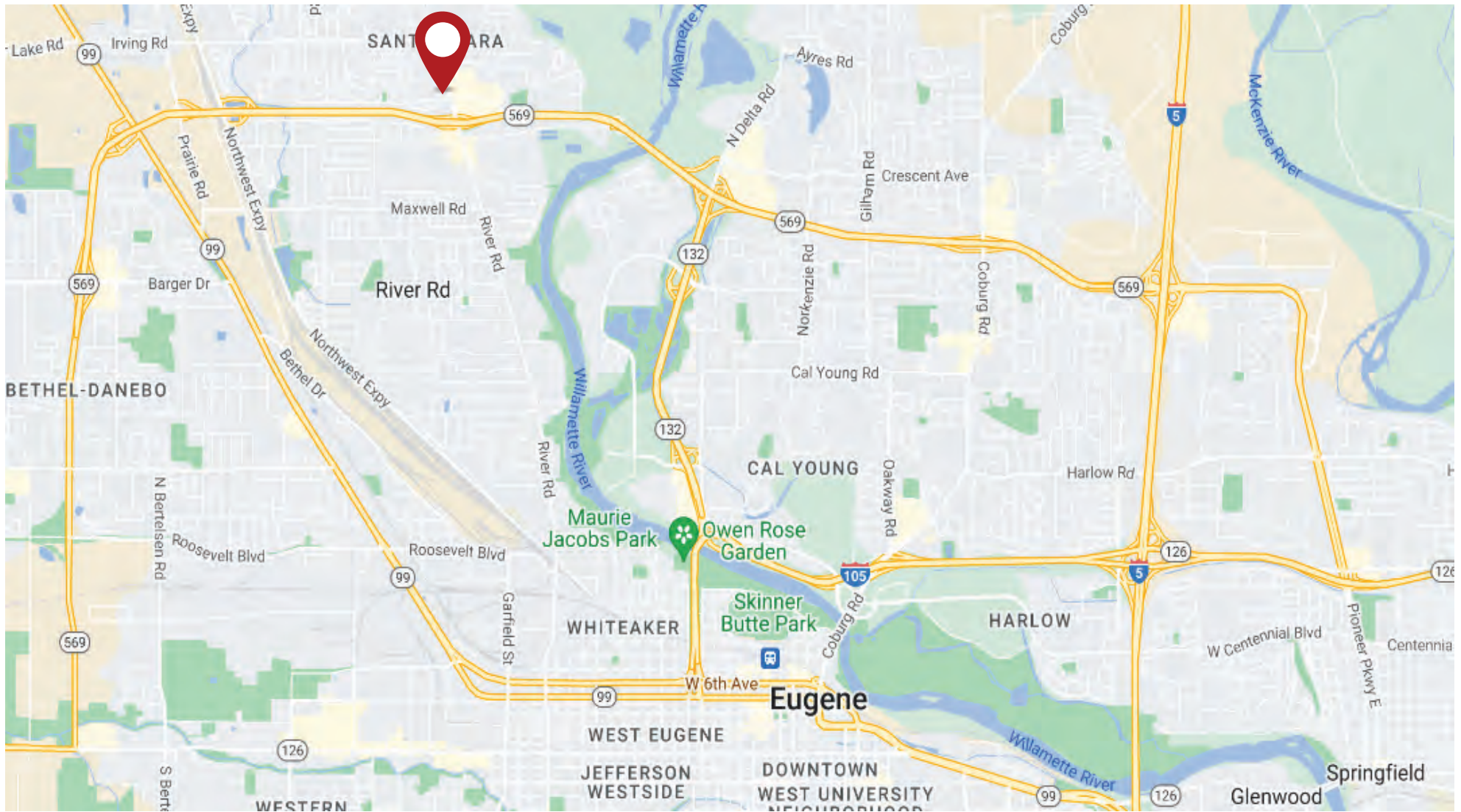


PROPERTY AERIAL MAP



The information in this package was obtained from sources deemed reliable, and is not guaranteed by agent. Package is subject to change, error or omission, prior sale or lease, correction or withdrawal. Any party contemplating purchase is urged to conduct their own independent study and inspection.

PROPERTY AERIAL MAP



The information in this package was obtained from sources deemed reliable, and is not guaranteed by agent. Package is subject to change, error or omission, prior sale or lease, correction or withdrawal. Any party contemplating purchase is urged to conduct their own independent study and inspection.