



**FOR LEASE**

**3300 S. Hwy 40**

Heber, Utah 84032

**Available:**

**1,800 SF**

Flex/Retail Space

**CONTACT US**

**Mark Haroldsen**

Associate Vice President  
+1 801 453 6837  
mark.haroldsen@colliers.com

**Colliers**

2100 Pleasant Grove Blvd., Suite 200  
Pleasant Grove, UT 84062  
Main: +1 801 947 8300  
colliers.com

**Property Highlights**

- Rate: \$1.50/SF NNN
- 3 spaces available, 30' x 60'
- 120/240 single phase
- 14 ft overhead doors

**Demographics**

**Population**

2025 Estimated

2030 Projected

**Households**

2025 Estimated

2030 Projected

**Income**

2025 Median HHI

2025 Average HHI

2025 Per Capita

**1 Mile**

**3 Mile**

**5 Mile**

1,210

1,301

342

369

\$109,073

\$162,210

\$43,329

16,144

17,559

4,593

4,980

\$111,096

\$155,770

\$44,397

27,331

29,464

8,275

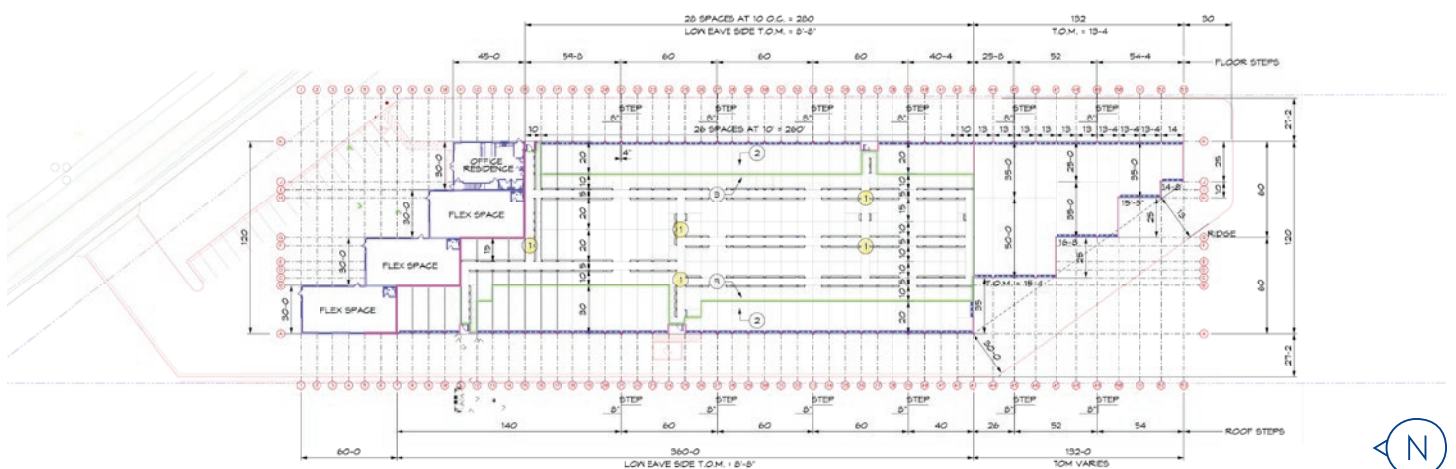
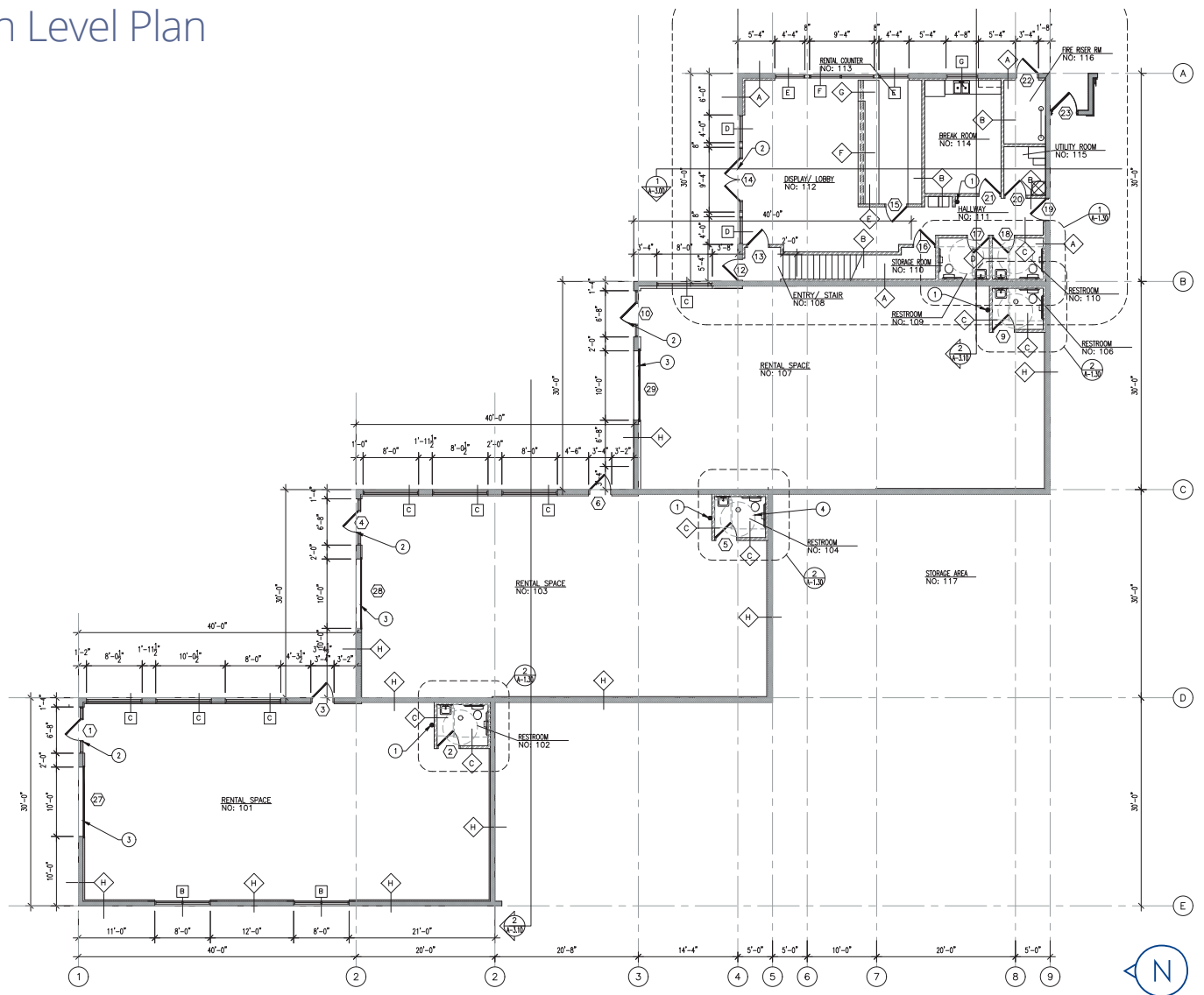
8,914

\$115,018

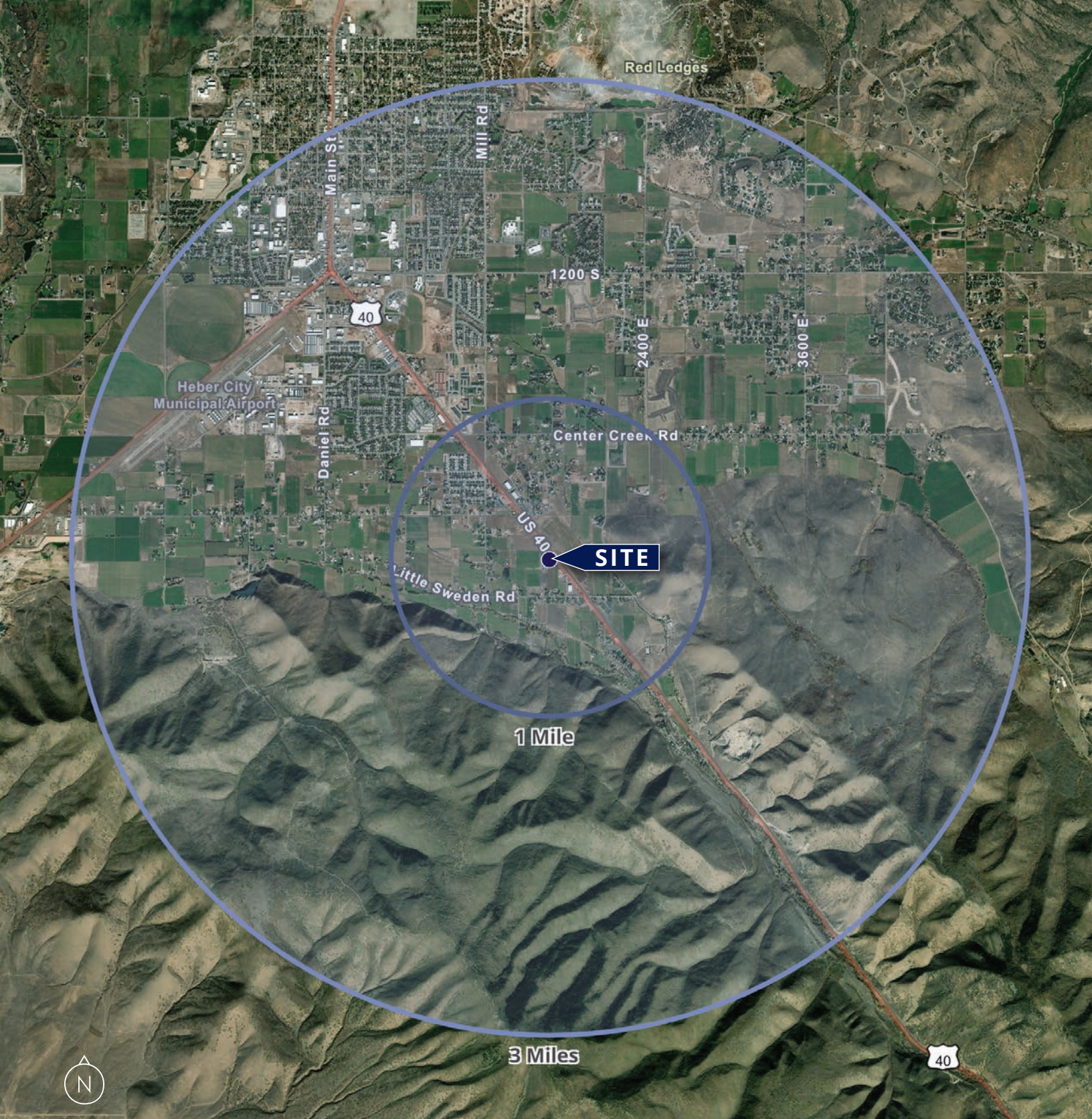
\$156,103

\$47,011

Information provided by ESRI Business Analyst







**Colliers**

2100 Pleasant Grove Blvd., Suite 200  
Pleasant Grove, UT 84062  
Main: +1 801 947 8300  
colliers.com

**Mark Haroldsen**

Associate Vice President  
+1 801 597 7588  
mark.haroldsen@colliers.com

This document has been prepared by Colliers International for advertising and general information only. Colliers International makes no guarantees, representations or warranties of any kind, expressed or implied, regarding the information including, but not limited to, warranties of content, accuracy and reliability. Any interested party should undertake their own inquiries as to the accuracy of the information. Colliers International excludes unequivocally all inferred or implied terms, conditions and warranties arising out of this document and excludes all liability for loss and damages arising there from. This publication is the copyrighted property of Colliers International and/or its licensor(s). ©2025. All rights reserved.