

**FOR SALE**  
**639 5<sup>th</sup> Street**  
**Woodland, CA**

**Offered At**  
**\$349,900**

Contact: Ron Caceres

Broker# 00821385

(530) 537-8153

[Ron@Caceresrealestate.com](mailto:Ron@Caceresrealestate.com)

Co-Broker: Tim Schimmel

Broker# 01762217

(530) 383-3030

[Tim@caceresrealestate.com](mailto:Tim@caceresrealestate.com)

[www.caceresrealestate.com](http://www.caceresrealestate.com)



**Caceres Real Estate**



## OVERVIEW OF PROPERTY

- Parcel – Approx 7,200 SF
- Building – Approx 720 SF
- Shop – Approx 800 SF

### Features of Property

- Close to Downtown
- Possible Second Unit
- Office Space
- Yard Space
- Shop Space
- Storage Space
- Close to Woodland PD
- Perfect for Owner User
- Gated



Caceres Real Estate

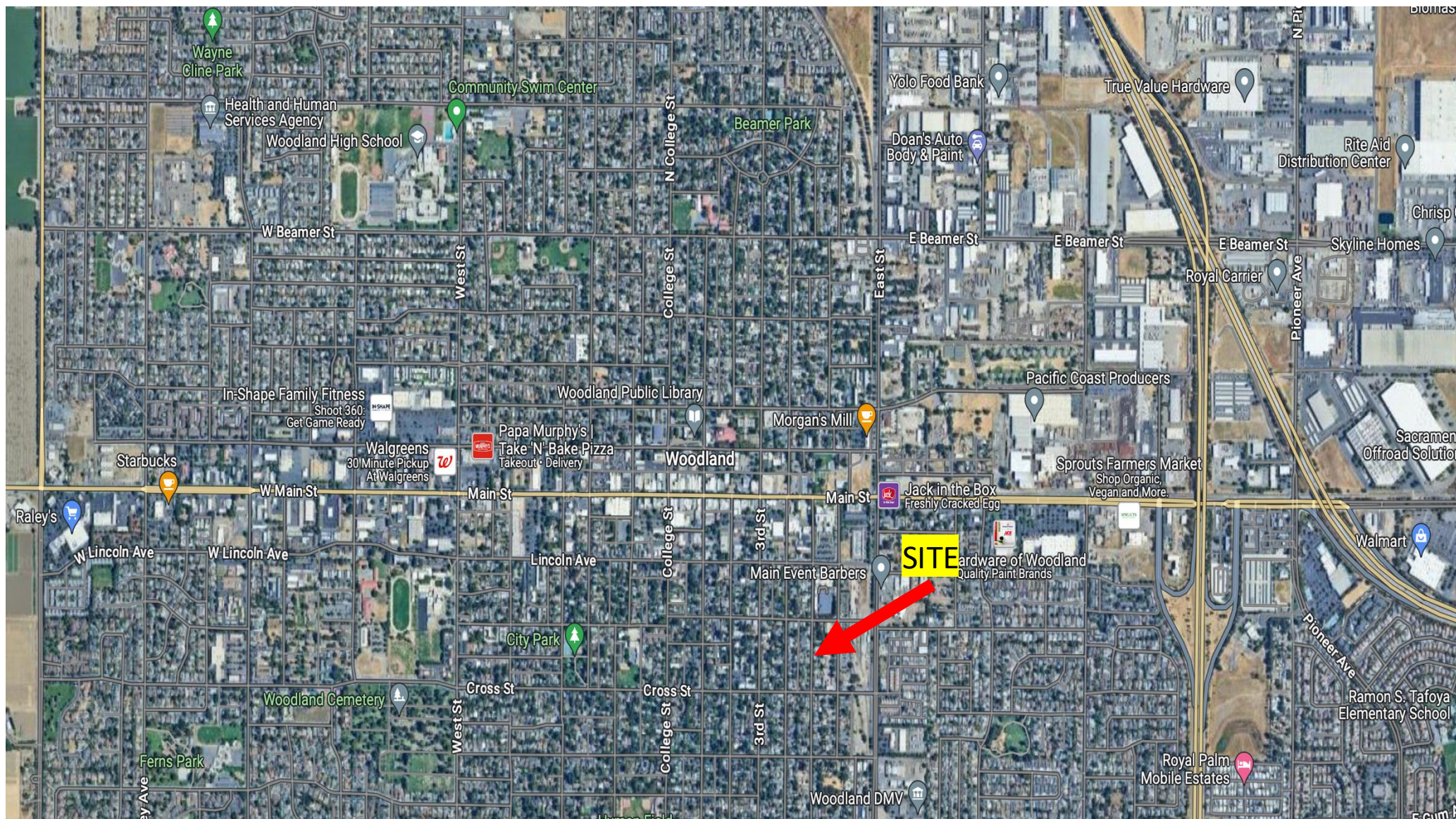


**Caceres Real Estate**

Approx 720 sqft  
Office,  
Approx 800 sqft  
Shop

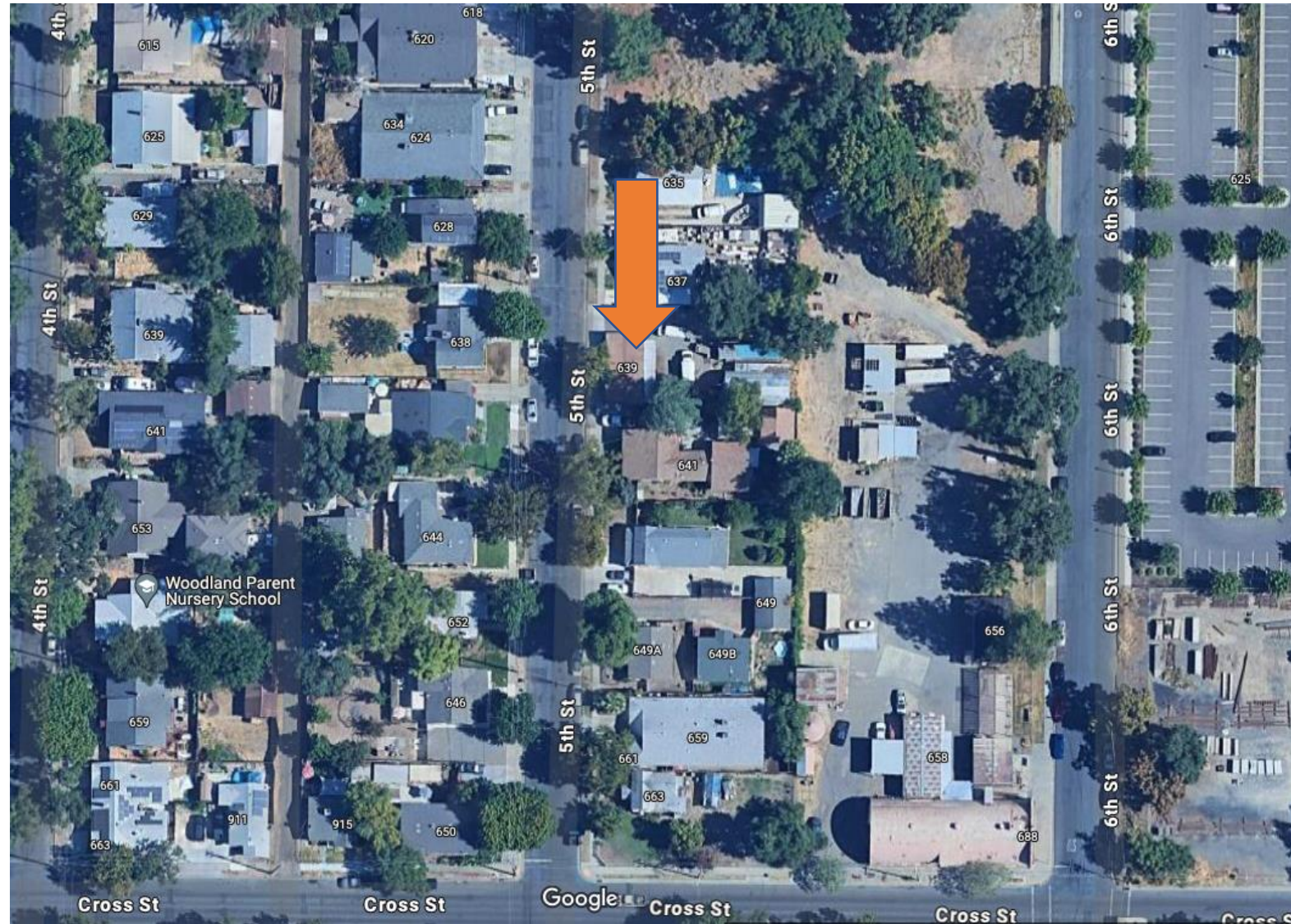
Zoned Mixed Use-  
East Street

Perfect for Owner  
User



# Location

- The subject property is located in Yolo County, just South of downtown Woodland on 5<sup>th</sup> Street between Oak and Cross Streets.
- Woodland is located within the greater Sacramento Region. The city, which was incorporated in 1871, is one of four local jurisdictions in Yolo County and serves as the County seat. The City sits at the intersection of Interstate 5 and State Route 113; located just 20 miles northwest of the State Capital, Sacramento; eight miles east of the Sacramento International Airport; 12 miles north of the University of California, Davis campus; and 83 miles northeast of San Francisco.
- In 2020, Woodland, CA had a population of 59.8k people with a median age of 36.1 and a median household income of \$71,477. Between 2019 and 2020 the population of Woodland, CA grew from 59,710 to 59,759, a 0.0821% increase and its median household income grew from \$69,612 to \$71,477, a 2.68% increase.



## Photos of Subject





# Photos of Subject

HJCU  
4279 28 3  
42G1

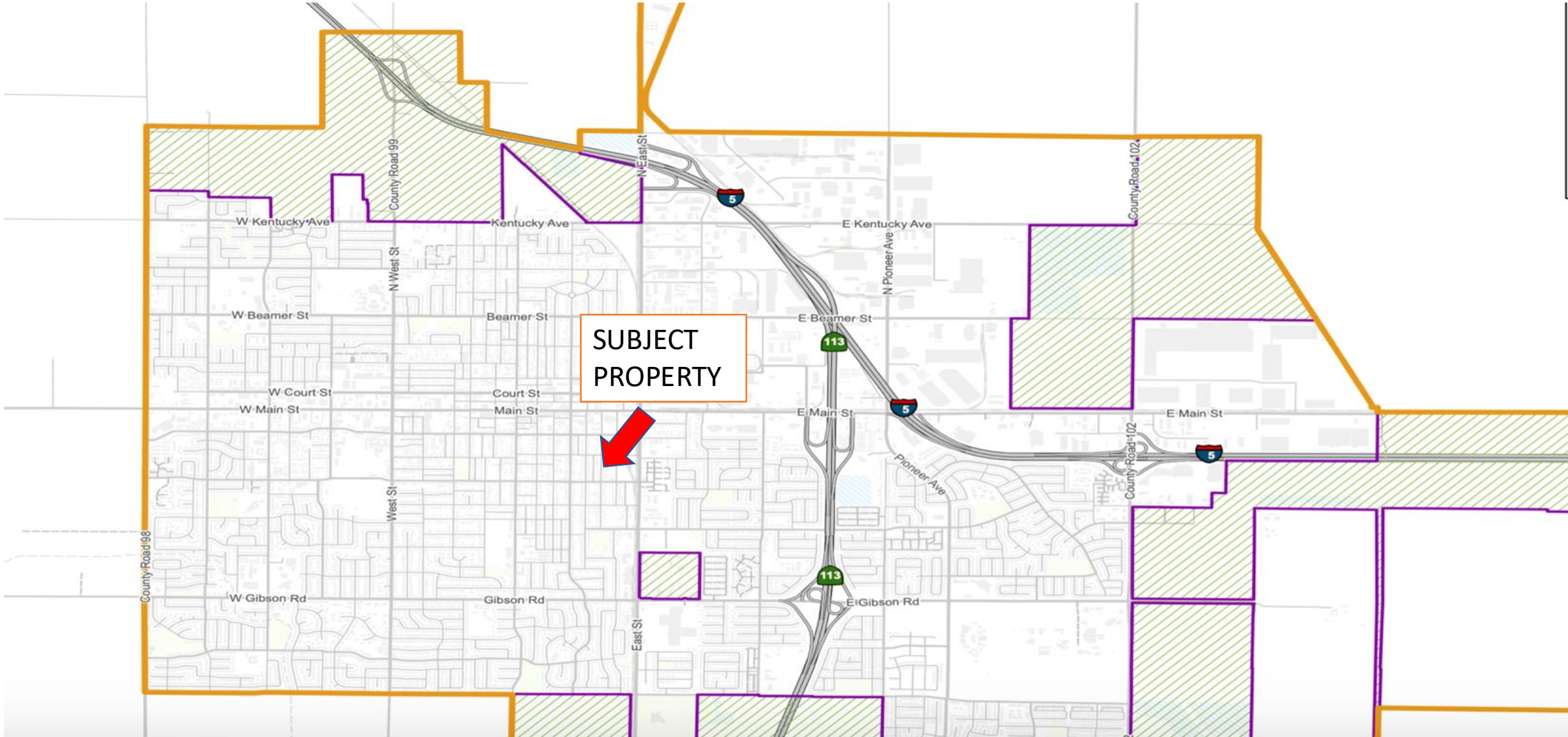
MAX GROSS	32 500 KG
TARE	71 650 LB
PAYLOAD	3 750 KG
CUBE	8 270 LB
	28 750 KG
	63 360 LB
	67.5 CU M
	2 384 CU FT

HANJIN  
SHIPPING  
CO. LTD.



Police Department  
& Downtown  
Just Blocks  
Away

# CITY OF WOODLAND





Offered By:

Contact: Ron Caceres

Broker# 00821385

(530) 537-8153

[Ron@Caceresrealestate.com](mailto:Ron@Caceresrealestate.com)

Co-Broker: Tim Schimmel

Broker# 01762217

(530) 383-3030

[tim@caceresrealestate.com](mailto:tim@caceresrealestate.com)

Caceresrealestate.com

The information contained herein has been obtained from sources we believe to be reliable. However, we cannot guarantee, warrant or represent its accuracy, and all information is subject to error, change or withdrawal. You should conduct a careful, independent investigation of the property and verify all information yourself. Any reliance on this information is solely at your risk. Neither this presentation, nor any part of it shall form the basis of or be relied upon in connection with any offer, or act as an inducement to enter into any contract or commitment whatsoever. Any disclosure, use, copyright or circulation of this presentation or the information contained within is strictly prohibited unless you have obtained Caceres Real Estate's prior written consent.



# Caceres Real Estate