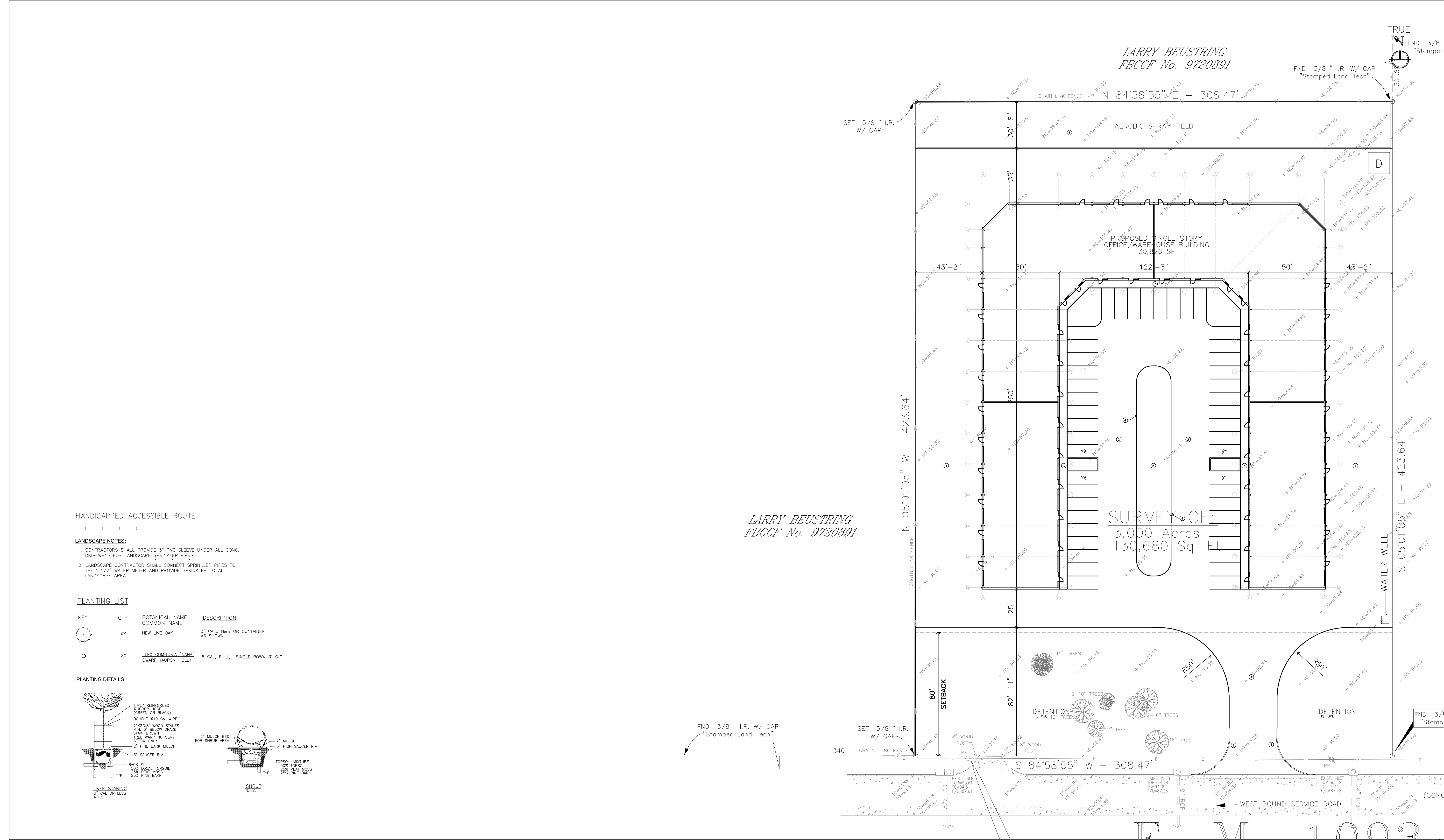


DATE	REVISIONS
10/12/11	ISSUE FOR PRELIM PRICING

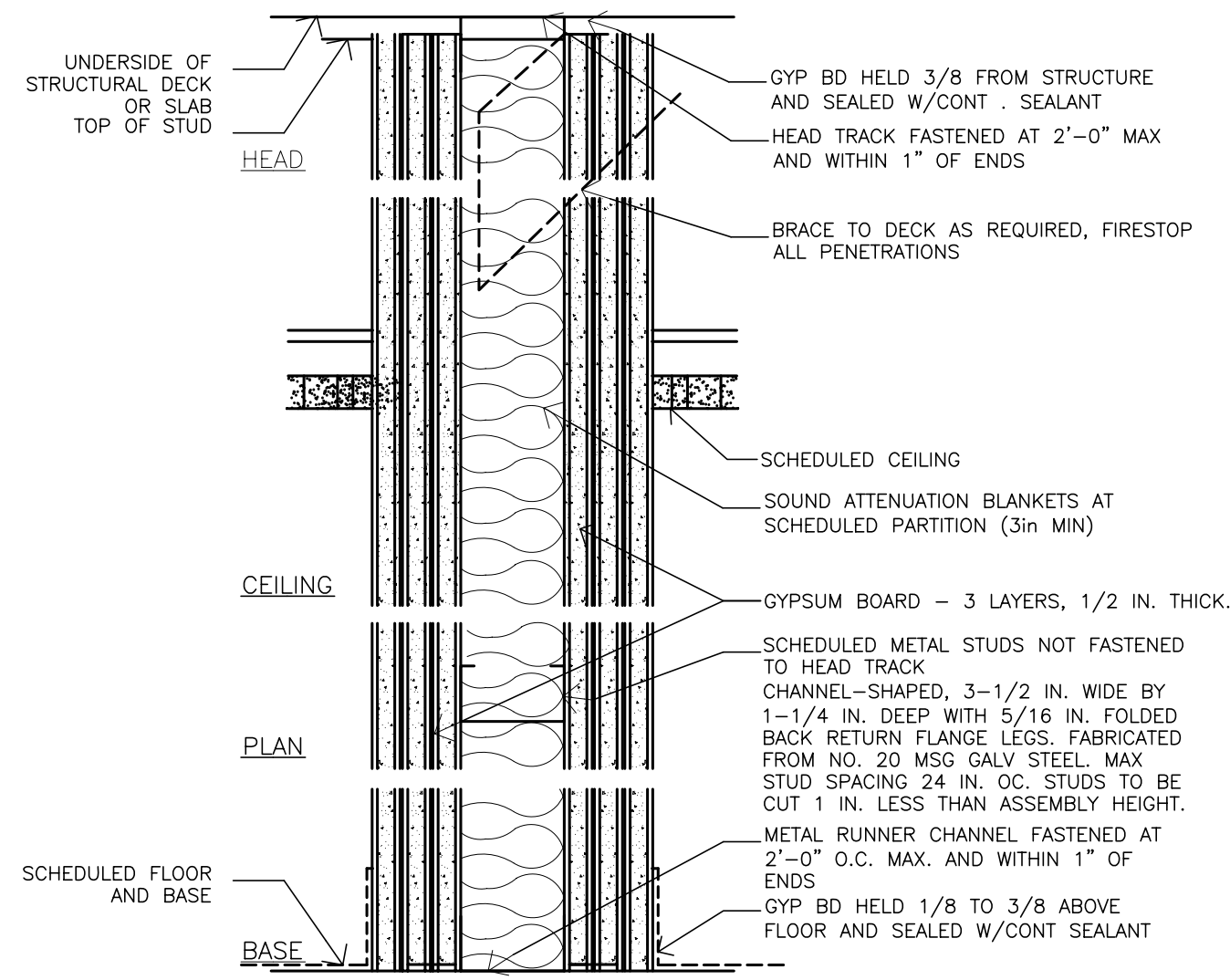
**FM 1093**  
 NEW SHELL OFFICE/WAREHOUSE BLDG  
 1984 FM 1093  
 RICHMOND, TX

SCALE: 1/16" = 1'-0"  
 DRAWING TITLE:  
**SITE PLAN**  
 DRAWING:  
**SP1.0**

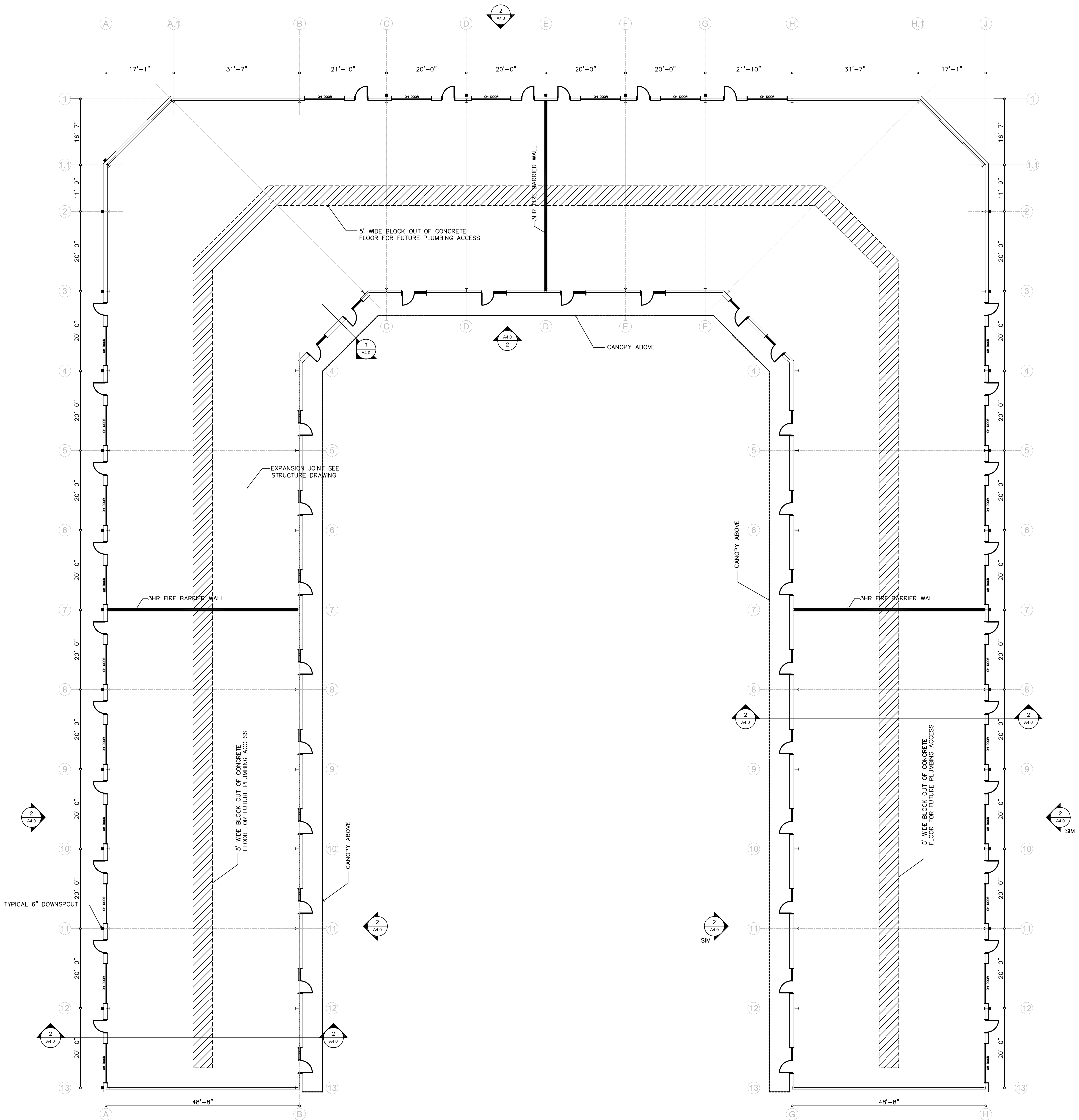


<p><b>01] GENERAL NOTES</b></p> <ol style="list-style-type: none"> <li>ALL SIDEWALKS SHALL BE 5' WIDE UNLESS NOTED OTHERWISE.</li> <li>MAXIMUM SLOPE OF ALL SIDEWALKS AND ACCESSIBLE ROUTES IN THE DIRECTION OF TRAVEL SHALL BE 1:20. MAXIMUM CROSS SLOPE SHALL BE 1:50.</li> <li>THERE SHALL BE NO CHANGE IN LEVEL ON AN ACCESSIBLE ROUTE THAT IS GREATER THAN 1/2".</li> <li>CITY SIDEWALKS SHALL MEET PAVING HEIGHTS AT DRIVES. PROVIDE AN ACCESSIBLE PATH ACROSS THE DRIVEWAY WITH 1" SLOPE OF LESS THEN 1:20 AND A CROSS SLOPE OF LESS THEN 1:50.</li> <li>PROVIDE AN ACCESSIBLE ROUTE FROM ACCESSIBLE PARKING AND CITY SIDEWALKS INTO THE BUILDING.</li> <li>AT LEAST ONE ACCESSIBLE ROUTE SHALL CONNECT ACCESSIBLE BUILDINGS, FACILITIES, ELEMENTS, AND SPACES THAT ARE ON THE SAME SITE. T.A.S. 4.3.2(2).</li> <li>MAXIMUM SLOPE OF PAVING IN ACCESSIBLE PARKING SPACES, ACCESS ANGLES AND UNLOADING AREAS SHALL 1:50, REFER TO CIVIL PLAN C-1 FOR PAVEMENT GRADES.</li> <li>ALL TYPICAL PARKING SPACES SHALL BE 9'-0" WIDE BY 18'-0" DEEP, WITH 2' OVERHUNG OVER LANDSCAPE AREA.</li> <li>THE FULL WIDTH AND DEPTH OF CURB RAMPS SHALL HAVE A LIGHT AND REFLECTIVE VALUE AND TEXTURE THAT SIGNIFICANTLY CONTRASTS WITH THAT OF ADJOINING PEDESTRIAN SURFACES. PROVIDE 1/8" DEEP GROVES 1/4" WIDE @ 2" O.C. INSURE PROPER DRAINAGE OF SURFACE.</li> <li>MINIMUM CURB RADIUS = 3'-0".</li> <li>ALL DIMENSIONS ARE TO FACE OF CURB UNLESS NOTED OTHERWISE.</li> <li>REFER TO GEOTECHNICAL INVESTIGATION FOR EARTHWORK REQUIREMENTS.</li> <li>REFER TO BOUNDARY SURVEY FOR LOCATION AND LENGTH OF PROPERTY LINES. SURVEY INFORMATION OVERRIDES INFORMATION ON ARCHITECT'S SITE PLAN.</li> <li>WHEELCHAIR ACCESSIBILITY SLOPES:          WALKS:          IN DIRECTION OF TRAVEL: MAX 5% (1:20)          CROSS SLOPE: MAX 2% (1:50)          LANDINGS:          ANY DIRECTION: MAX 2% (1:50)          ACCESSIBLE PARKING SPACES AND STRIPED AREAS:          ANY DIRECTION: MAX 2% (1:50)          CURB RAMPS:          SLOPES: MAX 1:12          FLOOR DRAIN:          SLOPE TO DRAIN IN ANY DIRECTION: MAX 2% (1:50)</li> <li>PROVIDE 2-4" PVC SLEEVES UNDER ALL PAVED AREAS AND WALKS FOR LANDSCAPE IRRIGATION.</li> <li>REMOVE ALL CONSTRUCTION TRASH DEBRIS FROM GRASS AND LANDSCAPE AREAS AND INSTALL 4" TOP SOL.</li> </ol>	<p><b>03] PAVING NOTES</b></p> <p><b>AUTO PAVING (—— S.F.)</b>          THICKNESS 4 INCHES          COMPRESSIVE STRENGTH 3,500 PSI AT 28 DAYS          REINFORCING #3 BARS AT 15" EACH WAY          JOINTING REFER TO PAVING PLAN          FINISH BELT FINISH EXCEPT SCORED ON RAMPS          CURING SPRAYED MEMBRANE</p> <p><b>CURBS</b>          DESIGN TOPSET, RE: DRAWINGS          COMPRESSIVE STRENGTH 3,500 PSI AT 28 DAYS          REINFORCING REFER TO DRAWINGS          JOINTING 3/4" BOARD AND L.J. MATERIAL AT EACH          FINISH PAVING JOINT AND 25' MAX LIGHT BROOM          CURING SPRAYED MEMBRANE</p>	<p><b>04] AREA SUMMARY</b></p> <p><b>DRIVEWAYS (—— S.F.)</b>          THICKNESS 4 INCHES          COMPRESSIVE STRENGTH 3,500 PSI AT 28 DAYS          REINFORCING REFER TO DRAWINGS          JOINTING BELT OR MEDIUM BROOM FINISH          FINISH SPRAYED MEMBRANE          CURING</p> <p><b>WALKS (—— S.F.)</b>          THICKNESS 4 INCHES          COMPRESSIVE STRENGTH 3,000 PSI AT 28 DAYS          REINFORCING (FLAT SHEETS) 6 X 6 X 10/10 W/M          JOINTING REFER TO DETAILS          FINISH MEDIUM BROOM          CURING SPRAYED MEMBRANE</p>	<p><b>05] KEYED NOTES</b></p> <ol style="list-style-type: none"> <li>6" CONCRETE TRUCK PAVING</li> <li>4" CONCRETE AUTO PAVING</li> <li>4" CONCRETE WALK</li> <li>6" CONCRETE CURB</li> <li>LANDSCAPE AREA</li> <li>AEROBIC SPRAY FIELD AREA</li> <li>PYLON SIGN (BY OTHERS)</li> </ol>	<p><b>05] HC PARKING DETAIL</b>          SCALE: N.T.S.</p>
--	---	--	---	--

OCCUPANCY TYPE AND LOAD				
OCCUPANCY CLASSIFICATION	SPECIFIC USE	SF	occ/sf	ALLOWABLE OCCUPANTS
A-1		0	PER SEAT	
A-2		0	15	0.00
A-3		0	PER SEAT	
A-4		0	PER SEAT	
A-5		0	PER SEAT	
B	OFFICE/RECEPTION	450	100	4.50
E	CLASSROOM	0	20	0.00
E	SHOP/VOCATIONAL	0	50	0.00
F	KITCHEN	0	200	0.00
I	IMPATIENT TREAT.	0	240	0.00
I	OUTPATIENT	0	100	0.00
I	SLEEPING	0	120	0.00
R		0	200	0.00
M		0	15	0.00
S	STORAGE	550	500	1.10
U		0	300	0.00
TOTAL		1000		5.60
TOTAL SHELL BUILDING		30,825		0.00
		31		172.62



SUITES 1101, 1201 & 2501  
TYP. INTERIOR (FIRE BARRIER) WALL  
U455 - FIRE RATING 3HR CONFIGURATION

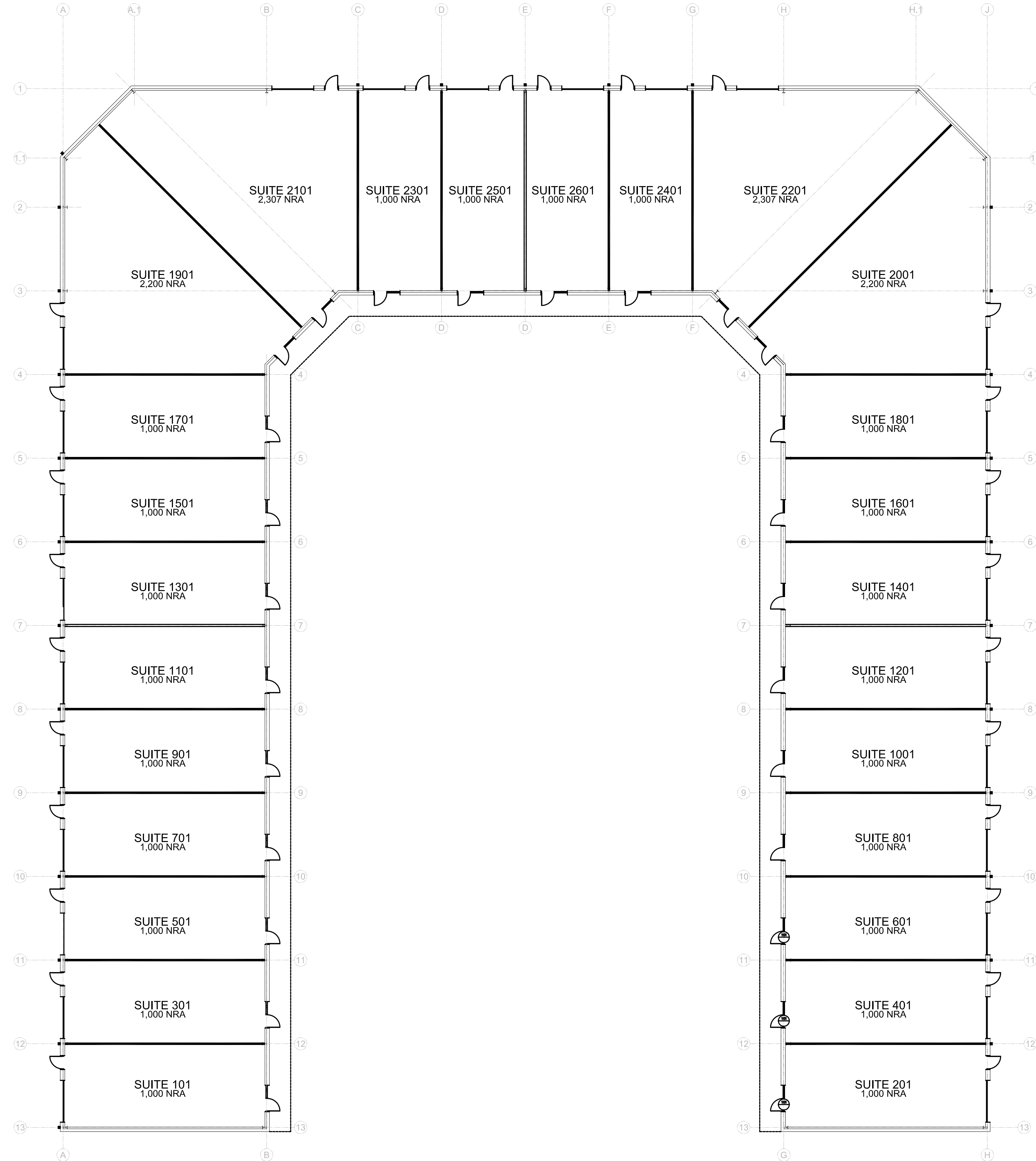


DATE	REVISIONS
10/12/11	ISSUE FOR PRELIM PRICING

**FM 1093**  
NEW SHELL OFFICE/WAREHOUSE BLDG  
1984 FM 1093  
RICHMOND, TX

NOT FOR REGULATORY  
APPROVAL PERMITTING  
OR CONSTRUCTION

OCCUPANCY TYPE AND LOAD				
OCCUPANCY CLASSIFICATION	SPECIFIC USE	SF	occ/sf	ALLOWABLE OCCUPANTS
A-1		0	PER SEAT	
A-2		0	15	0.00
A-3		0	PER SEAT	
A-4		0	PER SEAT	
A-5		0	PER SEAT	
B	OFFICE/RECEPTION	450	100	4.50
E	CLASSROOM	0	20	0.00
E	SHOP/VOCATIONAL	0	50	0.00
F	KITCHEN	0	200	0.00
I	IMPATIENT TREAT.	0	240	0.00
I	OUTPATIENT	0	100	0.00
I	SLEEPING	0	120	0.00
R		0	200	0.00
M		0	15	0.00
S	STORAGE	550	500	1.10
U		0	300	0.00
<b>TOTAL</b>		<b>1000</b>		<b>5.60</b>
<b>TOTAL SHELL BUILDING</b>		<b>30,825</b>		<b>0.00</b>
		<b>31</b>		<b>172.62</b>



DATE	REVISIONS
10/12/11	ISSUE FOR PRELIM PRICING

**FM 1093**  
**NEW SHELL OFFICE/WAREHOUSE BLDG**  
 1984 FM 1093  
 RICHMOND, TX

NOT FOR REGULATORY  
 APPROVAL PERMITTING  
 OR CONSTRUCTION

SCALE: 1/16" = 1'-0"
DRAWING TITLE: <b>LEASING FLOOR PLAN</b>
DRAWING: <b>SD1.0</b>