



990 POLK STREET
SAN FRANCISCO, CA 94109

**Corner Retail Space
For Lease**

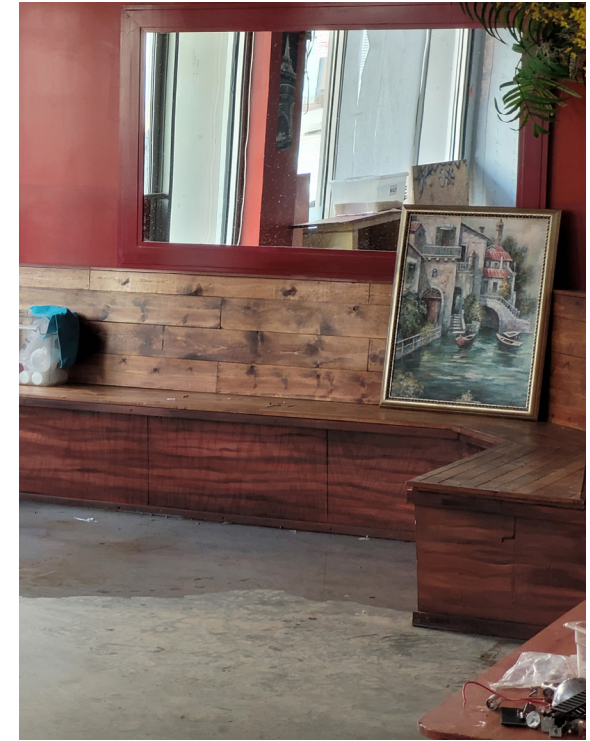
 **ventura partners**

FEATURES

A large, window-lined frontage, with natural light, the space is perfectly positioned to attract steady foot traffic in a vibrant neighborhood filled with businesses, residential buildings, medical facilities, and nearby government offices. An ideal corner location optimized for food service, but can be many other kinds of businesses tapping into the area's diverse mix of customers.

Highlights

- Corner location of Geary & Polk
- Average car traffic on Polk 10,000 vehicles per day
- Average car traffic on Geary 100,000 people travel a day (Geary is one of the busiest throughfares in San Francisco)
- 990 Polk St Apts, 1029 Geary St Apts, 1030-1042 Polk St Apts - Neighbors to 990 Polk
- Size: 1,495 sq. ft.
- Asking: \$2.50 sq. ft. NNN - Negotiable
- ADA Compliant





CONTACT

Priscilla Wilder

Leasing & Sales

415-409-2904

pwilder@venturapartners.com

CA BRE #01903660

NOTICE: The information has been secured by Ventura Partners from sources that are believed to be reliable. It is not guaranteed, however, and should be verified prior to consummating any transaction.

70 Otis Street
San Francisco, CA 94103
venturapartners.com

