

Class B
Office Building
for Lease

684 Boughton Road Bolingbrook, Illinois



Dave Tankersley
224.383.4831
dave@xroadsadvisors.com

Christine Simek
630.473.5070
christine@xroadsadvisors.com

Introduction



Bolingbrook is a village located in both Will and DuPage counties. The property is located in the South Suburban submarket. This two-story building is situated within close proximity to I-55, I-355 and Route 53. This property is located among many well known company headquarters that draw customers and clients to the surrounding area.

Building Features



- Available Suite:
 - Suite 204 - 554 RSF
- Suite 204 is move in ready with a single private office and large open office area
- Monument and directory signage
- On site mailboxes
- 24 hour access
- Parking Ratio: 4.29/1,000 SF
- 30 Surface parking spaces

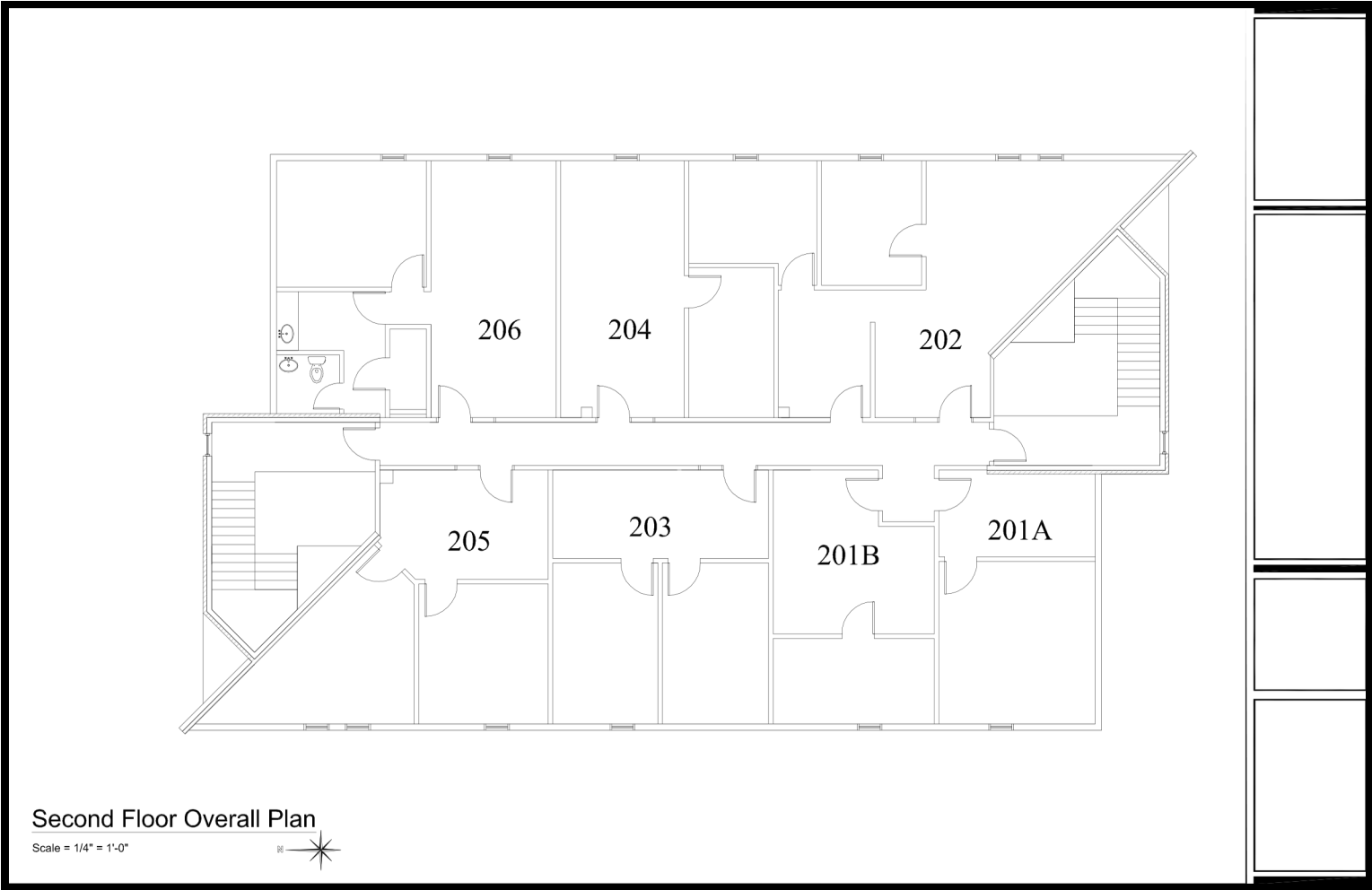
Exterior Photos



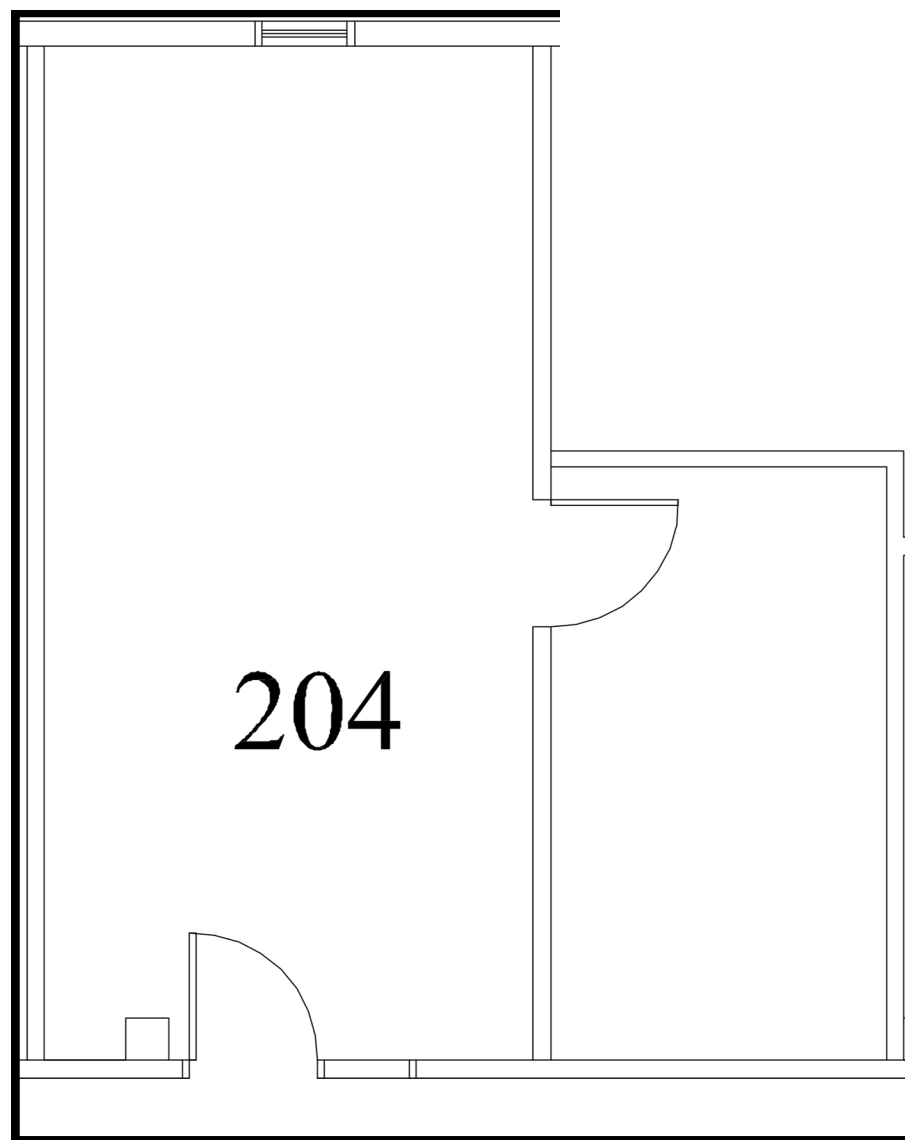
Interior Photos: Suite 204



Floor Plan: 2nd Floor



Floor Plan Suite 204- 554 RSF



Location



Close proximity to I-55,
I-355 and Route 53

684 Boughton Bolingbrook, Illinois



Dave Tankersley
224.383.4831
dave@xroadsadvisors.com



Christine Simek
630.473.5070
christine@xroadsadvisors.com