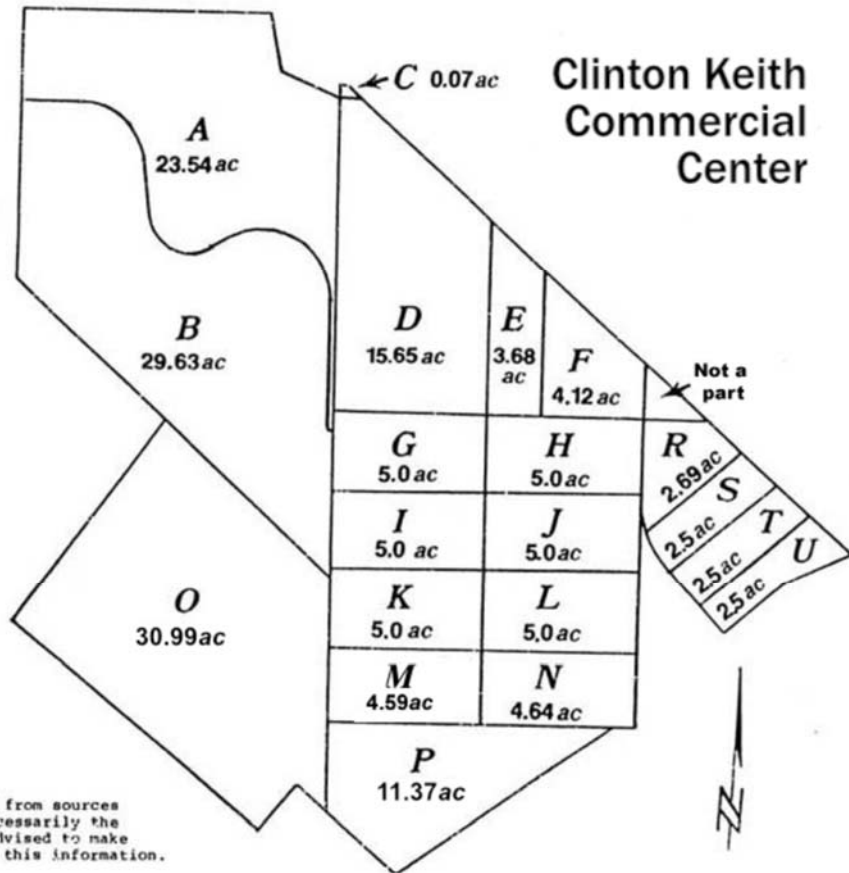


- A 380-230-002
- B 380-230-003
- C 380-250-021
- D 380-260-009
- E 380-260-010
- F 380-260-011
- G 380-270-001
- H 380-270-005
- I 380-270-002
- J 380-270-006
- K 380-270-003
- L 380-270-007
- M 380-270-004
- N 380-270-008
- O 380-230-004
- P 380-220-001
  
- R 380-270-009
- S 380-270-010
- T 380-270-011
- U 380-270-012



Acreages as noted are gross, obtained from sources deemed to be reliable, and are not necessarily the result of surveys. All parties are advised to make their own independent verification of this information.

- A \$6,708,900
- B \$8,296,400
- C+D \$4,401,600
- E \$1,012,000
- F \$1,112,400
- G \$1,175,000
- H \$1,225,000
- I \$1,175,000
- J \$1,200,000
- K \$1,125,000
- L \$1,125,000
- M \$1,032,750
- N \$1,044,000
- O \$6,972,750
- P \$2,558,250
- R \$712,850
- S \$650,000
- T \$637,500
- U \$625,000