

# PARK BUILDING

6400 Goldsboro Road  
Bethesda, MD 20817

TRIUMPH



Leasing Information:  
301.304.8300

**Paul "Rocky" Kern**   **Richard Coppola**  
301.304.8399   301.304.8405  
pkern@lpc.com   rcoppola@lpc.com

## Lincoln

Lincoln Property Company  
1101 Wootton Pkwy Suite 410  
Rockville, MD 20854

[www.lpc.com](http://www.lpc.com)

# PARK BUILDING

Office For Lease

6400 Goldsboro Road | Bethesda, MD 20817



## Property Highlights

- Serene, park-like setting with easy access to I-495 and Massachusetts Avenue.
- Free parking (2.40 / 1,000 SF).
- Suite 500: Full floor available immediately. High-end finishes.

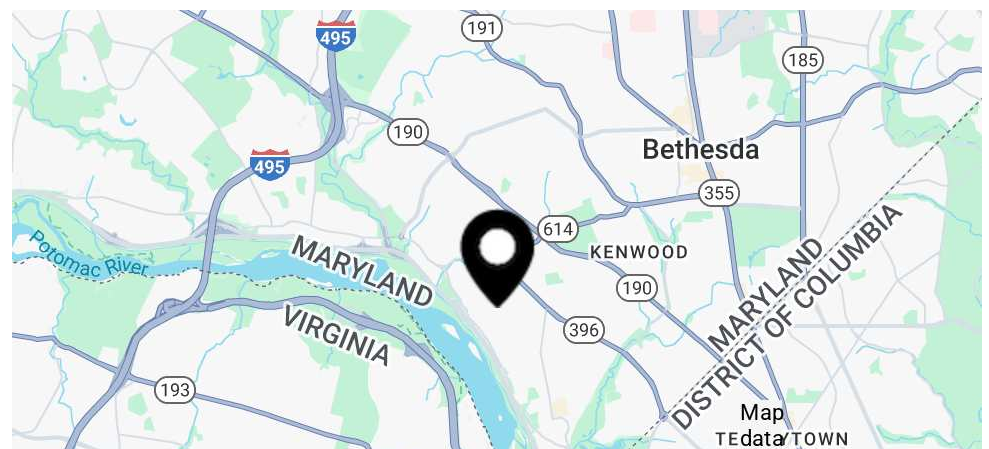
## Availabilities

## SF

## Date Available

Suite 200*	3,000 - 5,406 SF	Immediately
Suite 205*	1,046 SF	Immediately
Suite 350	1,086 SF	30 days
Suite 500	15,700 SF	Immediately

\*Contiguous 6,452 SF Block



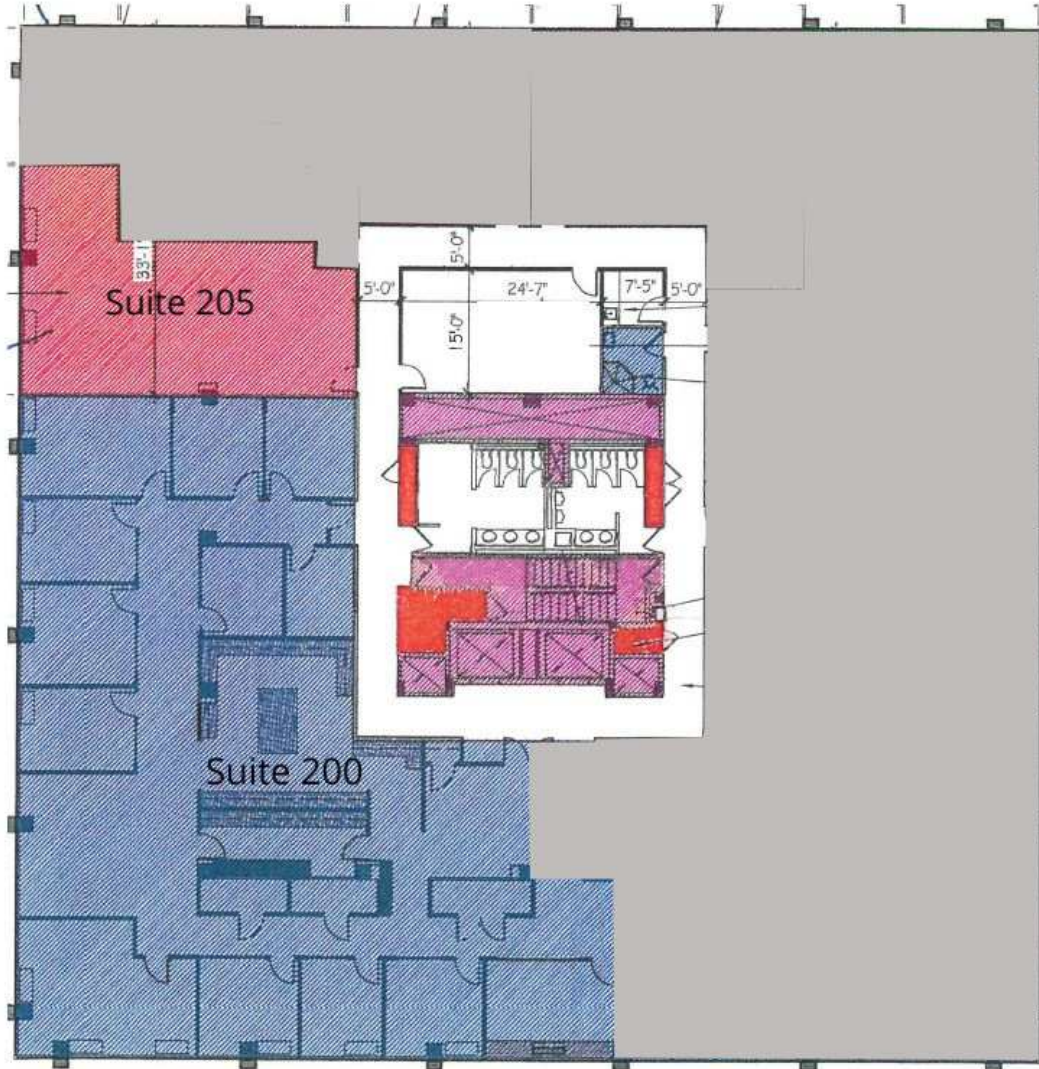
**Paul "Rocky" Kern**   **Richard Coppola**  
301.304.8399   301.304.8405  
pkern@lpc.com   rcoppola@lpc.com

**Lincoln**

# PARK BUILDING

2nd Floor

6400 Goldsboro Road | Bethesda, MD 20817



Suite	Size	Description
Suite 200*	3,000 - 5,406 SF	Available immediately. Contiguous 6,452 SF Block.
Suite 205*	1,046 SF	Available Immediately. Contiguous 6,452 SF Block.

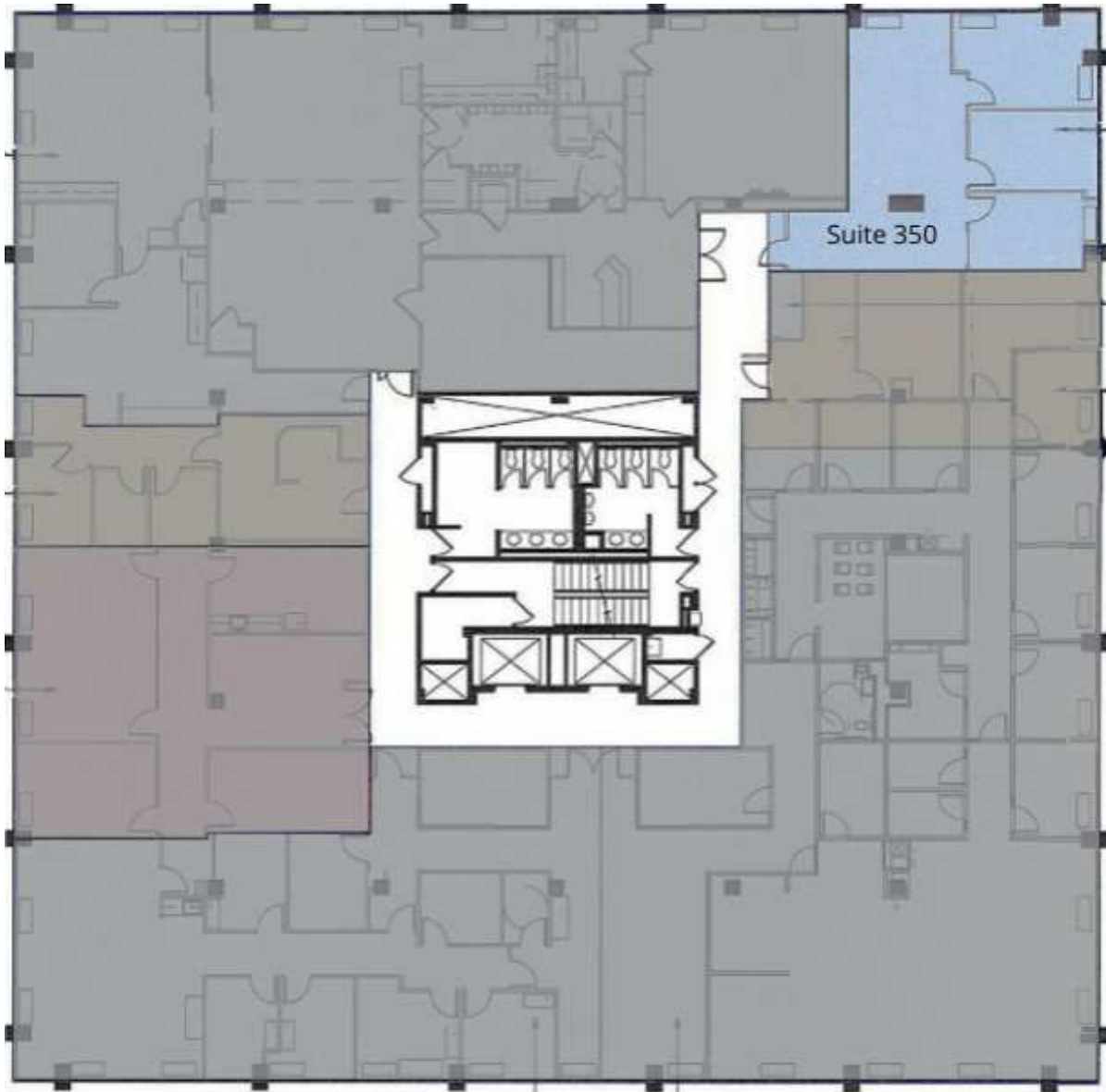
**Paul "Rocky" Kern**   **Richard Coppola**  
301.304.8399   301.304.8405  
pkern@lpc.com   rcoppola@lpc.com

**Lincoln**

# PARK BUILDING

3rd Floor

6400 Goldsboro Road | Bethesda, MD 20817



Suite	Size	Lease Rate	Description
■ Suite 350	1,086 SF	Negotiable	Available with 30 days' notice.

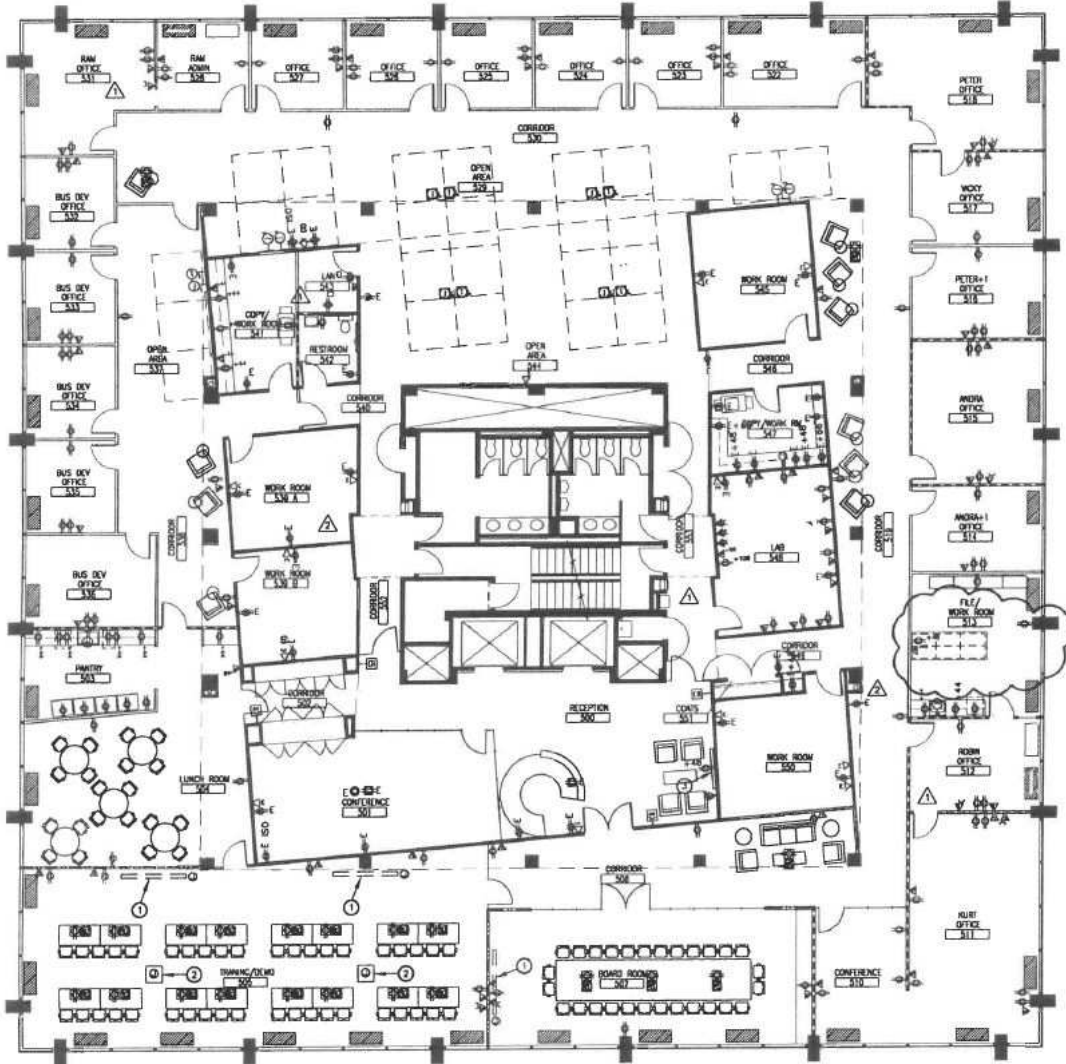
**Paul "Rocky" Kern**   **Richard Coppola**  
301.304.8399   301.304.8405  
pkern@lpc.com   rcoppola@lpc.com

**Lincoln**

# PARK BUILDING

Suite 500

6400 Goldsboro Road | Bethesda, MD 20817



Suite	Size	Description
Suite 500	15,700 SF	Full floor available immediately

Paul "Rocky" Kern Richard Coppola  
301.304.8399 301.304.8405  
pkern@lpc.com rcoppola@lpc.com

Lincoln



# PARK BUILDING

6400 Goldsboro Road  
Bethesda, MD 20817



Leasing Information:  
301.304.8300

**Paul "Rocky" Kern**  
301.304.8399  
pkern@lpc.com

**Richard Coppola**  
301.304.8405  
rcoppola@lpc.com

## Lincoln

Lincoln Property Company  
1101 Wootton Pkwy Suite 410  
Rockville, MD 20854

[www.lpc.com](http://www.lpc.com)