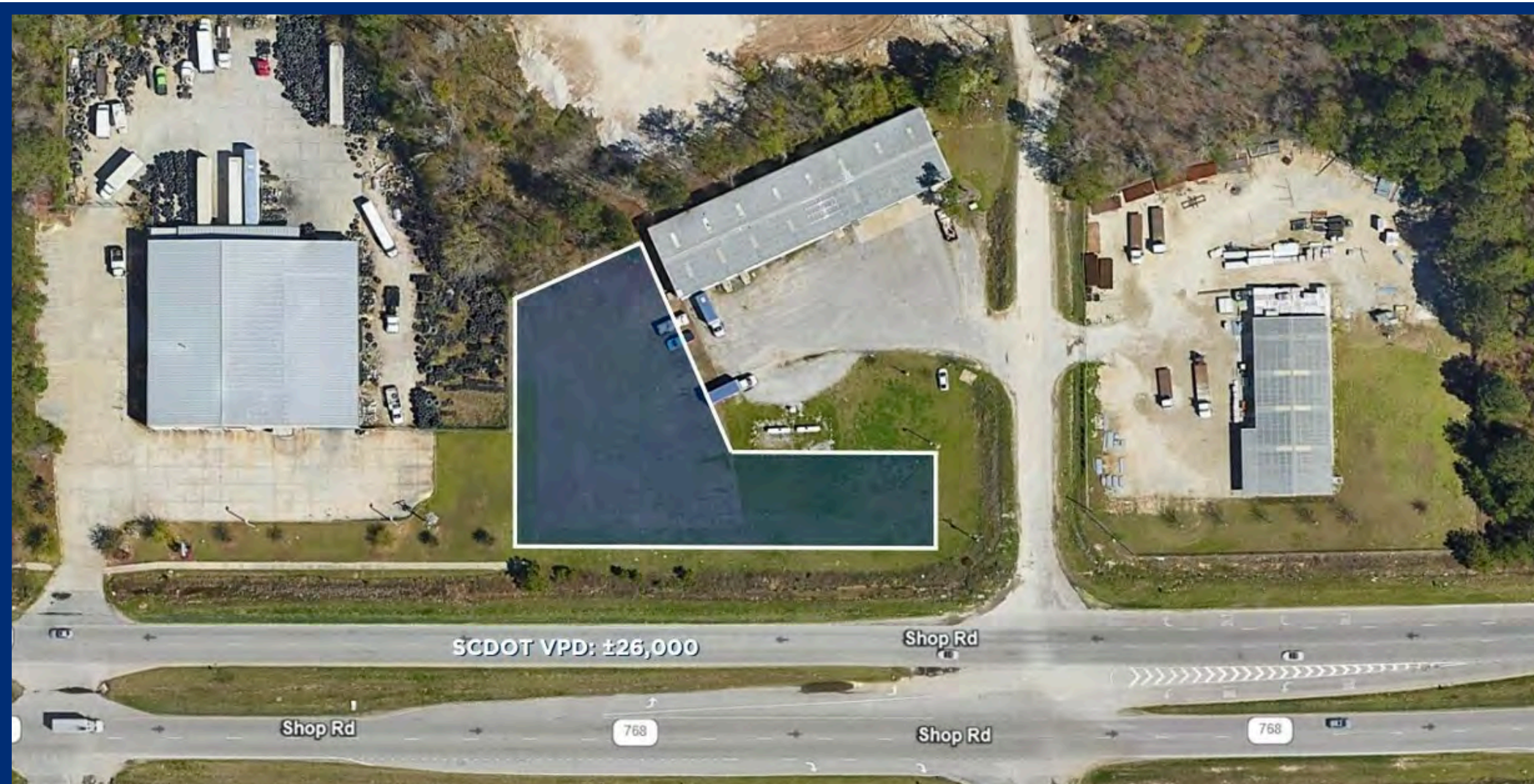


# FOR LEASE

±0.93 Acre Fenced Laydown Yard



**2651 Shop Road**  
Columbia, SC 29209



**Bryan Kingrey**

P: 803-466-9621

E: [bkingrey@reedypg.com](mailto:bkingrey@reedypg.com)



# 2651 Shop Road

Columbia, SC 29209

## Property Highlights

- Fully fenced laydown yard
- Ideal for trailer parking and outside storage
- 350' of Road Frontage
- Traffic Count:  $\pm 26,000$  VPD on Shop Road
- Possibility to Lease Warehouse on property

## Location Highlights

- $\pm 1/2$  mile from I-77
- $\pm 7$  miles from I-26
- $\pm 11$  miles from Downtown Columbia
- $\pm 15$  miles from Columbia Metropolitan Airport

## Offering Summary

**Lease Rate:** \$4,000/month

**Lease Type:** Ground Lease

**Lease Term:** Negotiable

*Acreage, taxes, utilities and lot dimensions to be verified by Buyer and/or Buyers agent*





# Property Photo

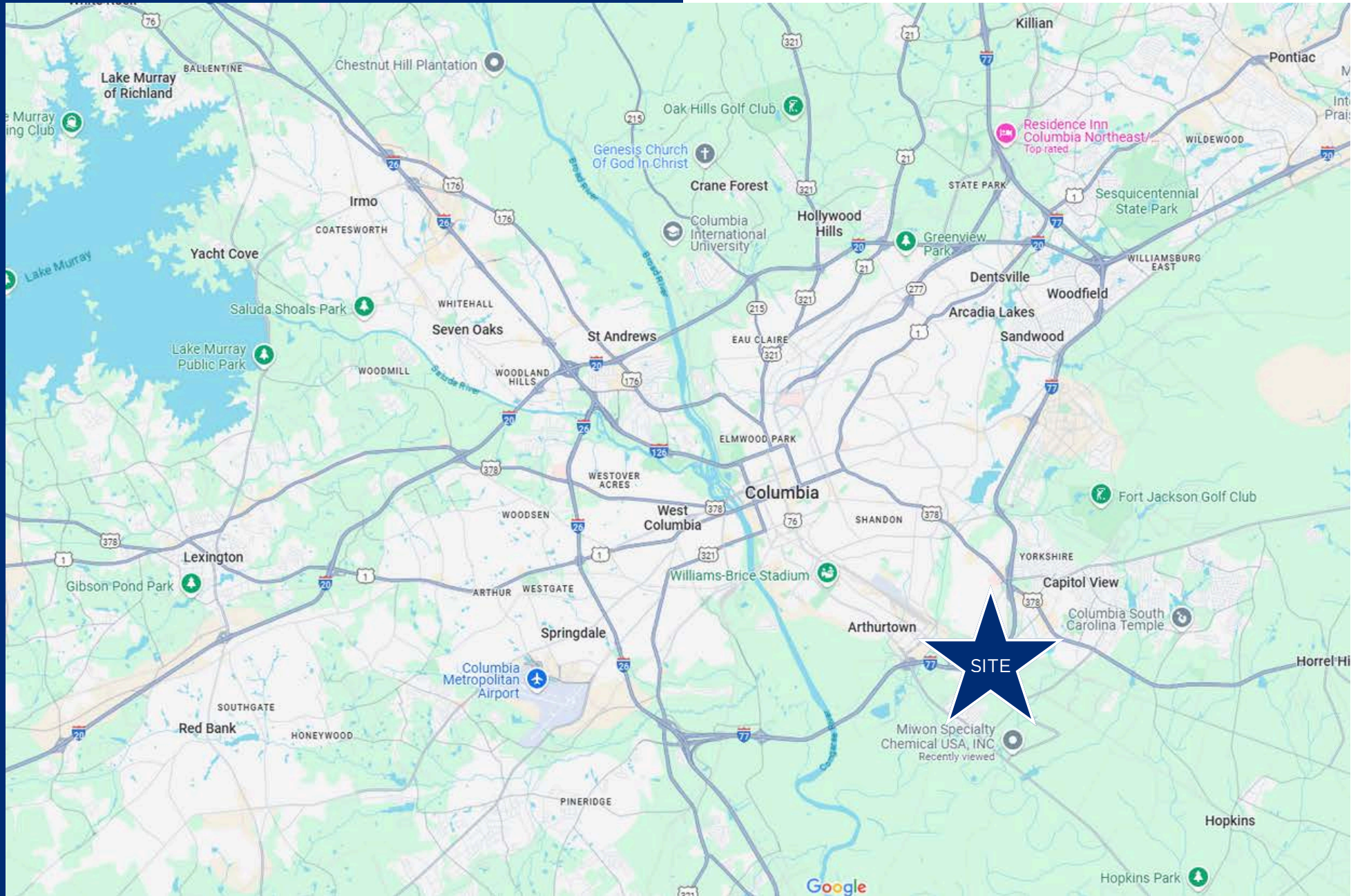
2651 Shop Road | Columbia, SC 29209





# Aerial Map

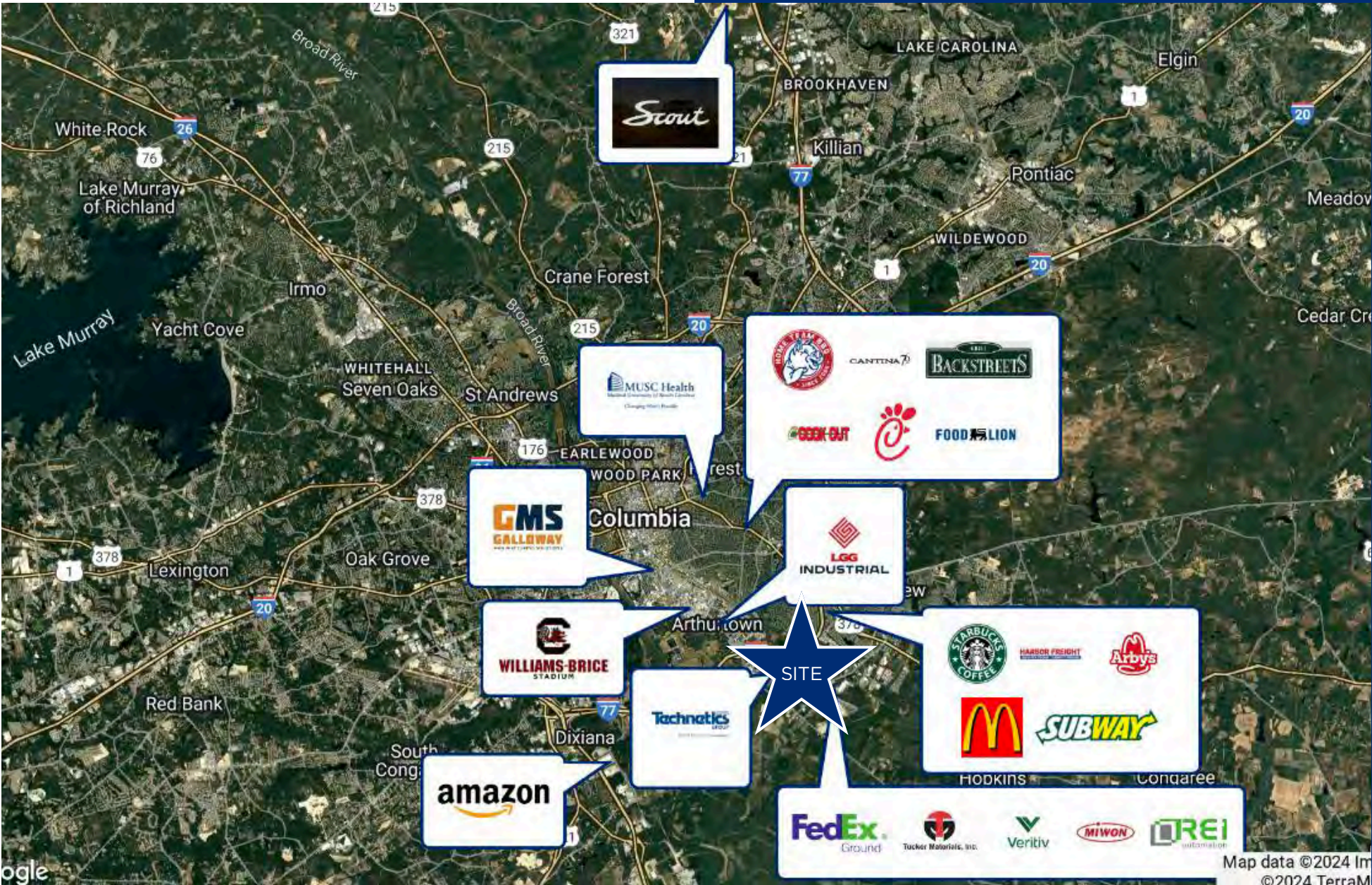
## Columbia, SC





# Local Amenities and Retailers

Columbia, SC





# Contact Information

## Reedy Commercial

### **WE KNOW THE MARKET BECAUSE WE'RE INVESTED HERE TOO**

At Reedy Commercial, we care about the why behind a commercial property as much as the what.

That's because we believe resilient communities, and portfolios that weather any market, start with people who have a vision beyond a quick profit.

Our network is as valuable as our net worth because this is our market, too.

We're invested in every asset class of commercial real estate right where our roots run deepest. That's how we uncover powerful investments in unexpected locations that yield incredible returns. It's why our clients trust us over the latest trends. And, it's what ignites our deepest passion - turning real estate investments into legacies.

---

**Bryan Kingrey**

803-466-9621

[bkingrey@reedypg.com](mailto:bkingrey@reedypg.com)

