



Boulder Dr SE

Alden Nash Ave SE

SITE

State Farm

FIFTH THIRD BANK



wellnow Urgent Care



Mercantile Bank of Michigan



FOR LEASE

# New Medical Office/Retail Building Available

11901 Fulton Street E | Lowell, MI



# Executive Summary

11901 Fulton Street E | Lowell, MI 49331



**FOR LEASE**

3,500 SF  
Available

Contact  
Broker  
Lease Rate

## ABOUT THE PROPERTY

- Fully built out medical office/clinic space.
- Shared building with Starbucks right in front of Meijer
- Centrally located in business district
- Exceptional trade area and demographics.
- Possible conversion to QSR

## JOIN THESE RETAILERS



## TRAFFIC COUNTS

M-21

Year: 2022 | Source: MDOT

15,958 AADT

# Trade Aerial

Lowell, MI



**SITE**

Alden Nash Ave SE

Lowell City Mall  
TRACTOR SUPPLY CO  
SNAP  
Arby's  
GQT

15,958 VPD

DOLLAR GENERAL

Bowes Rd

Segwun Ave SE

Grand River Dr SE

Great Clips

meijer

DOLLAR TREE

7-Eleven

Auto Zone

NAPA

ACE Hardware

McDonald's

Caribou

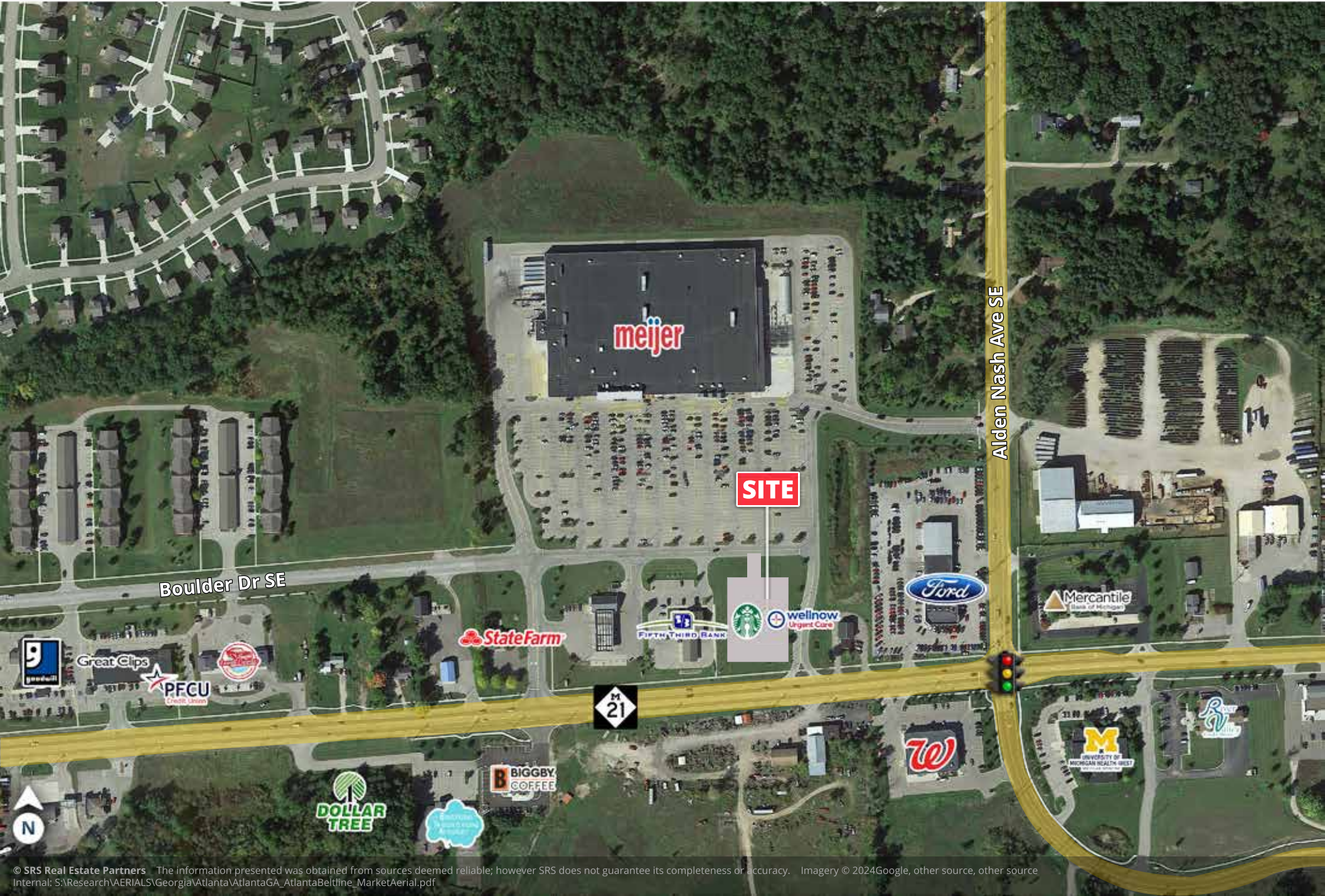
Little Caesars

attwood



# 11901 Fulton Street East

Lowell, MI



Boulder Dr SE

Alden Nash Ave SE

**SITE**

M-21



# Demographic Highlights

11901 Fulton Street | Lowell, MI 49331



## DEMOGRAPHIC HIGHLIGHTS

### 1 MILE

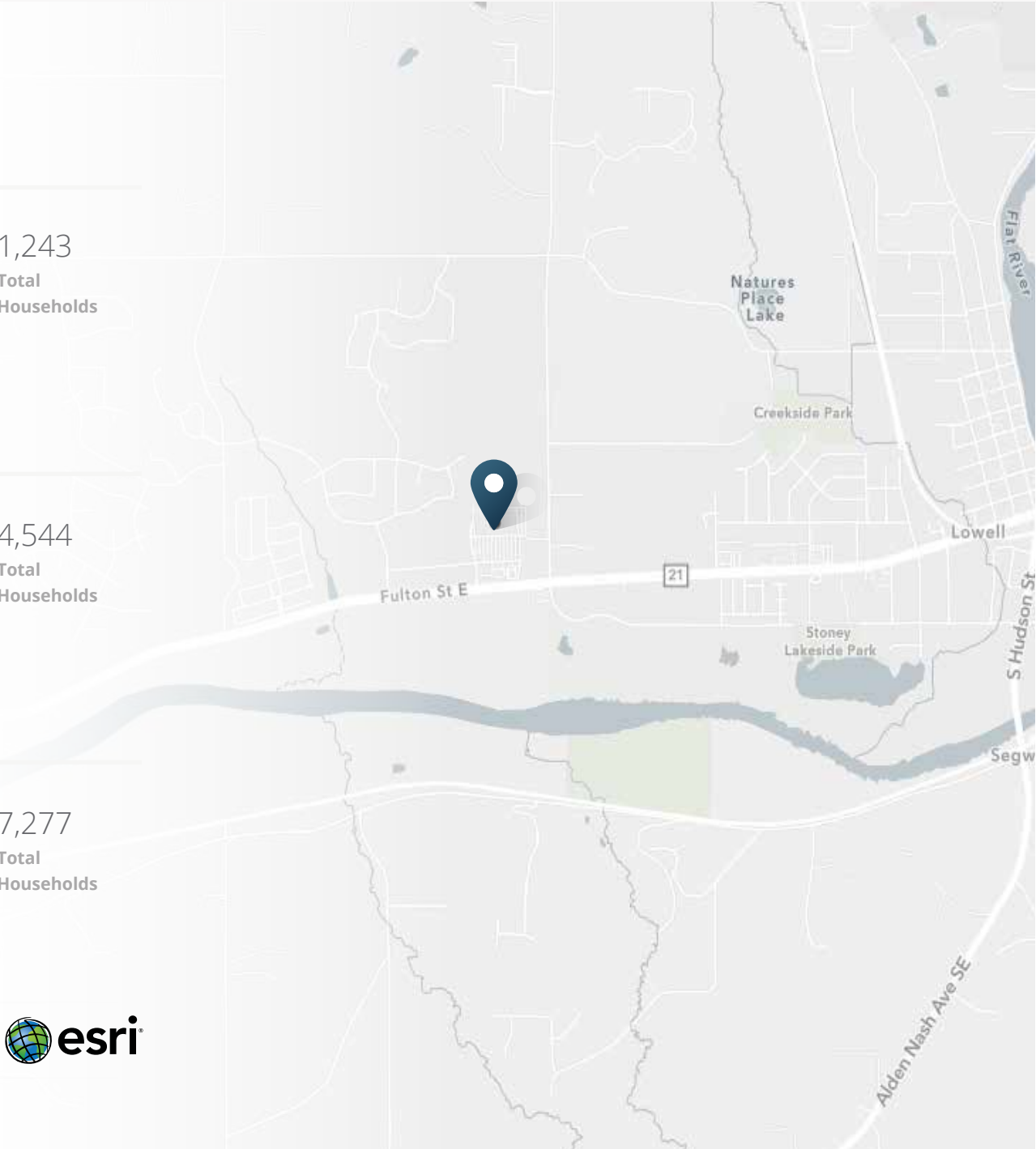
3,100 Population	2,508 Total Daytime Population	\$82,241 Average Household Income	1,243 Total Households
---------------------	--------------------------------------	---	------------------------------

### 3 MILES

11,961 Population	10,431 Total Daytime Population	\$105,689 Average Household Income	4,544 Total Households
----------------------	---------------------------------------	--	------------------------------

### 5 MILES

20,042 Population	15,461 Total Daytime Population	\$129,254 Average Household Income	7,277 Total Households
----------------------	---------------------------------------	--	------------------------------



> **Want more?** Contact us for a complete demographic, foot-traffic, and mobile data insights report.





**SRS Real Estate Partners**  
125 S Wacker Drive | Suite 1910  
Chicago, IL 60606  
312.279.5320

**Todd Frank**  
847.722.8253  
todd.frank@srsre.com

**Michael Carter**  
248.688.0630  
michael.carter@srsre.com

**Frank Rogers**  
248.688.0631  
frank.rogers@srsre.com

**SRSRE.COM**

© SRS Real Estate Partners

The information presented was obtained from sources deemed reliable;  
however SRS Real Estate Partners does not guarantee its completeness or accuracy.