

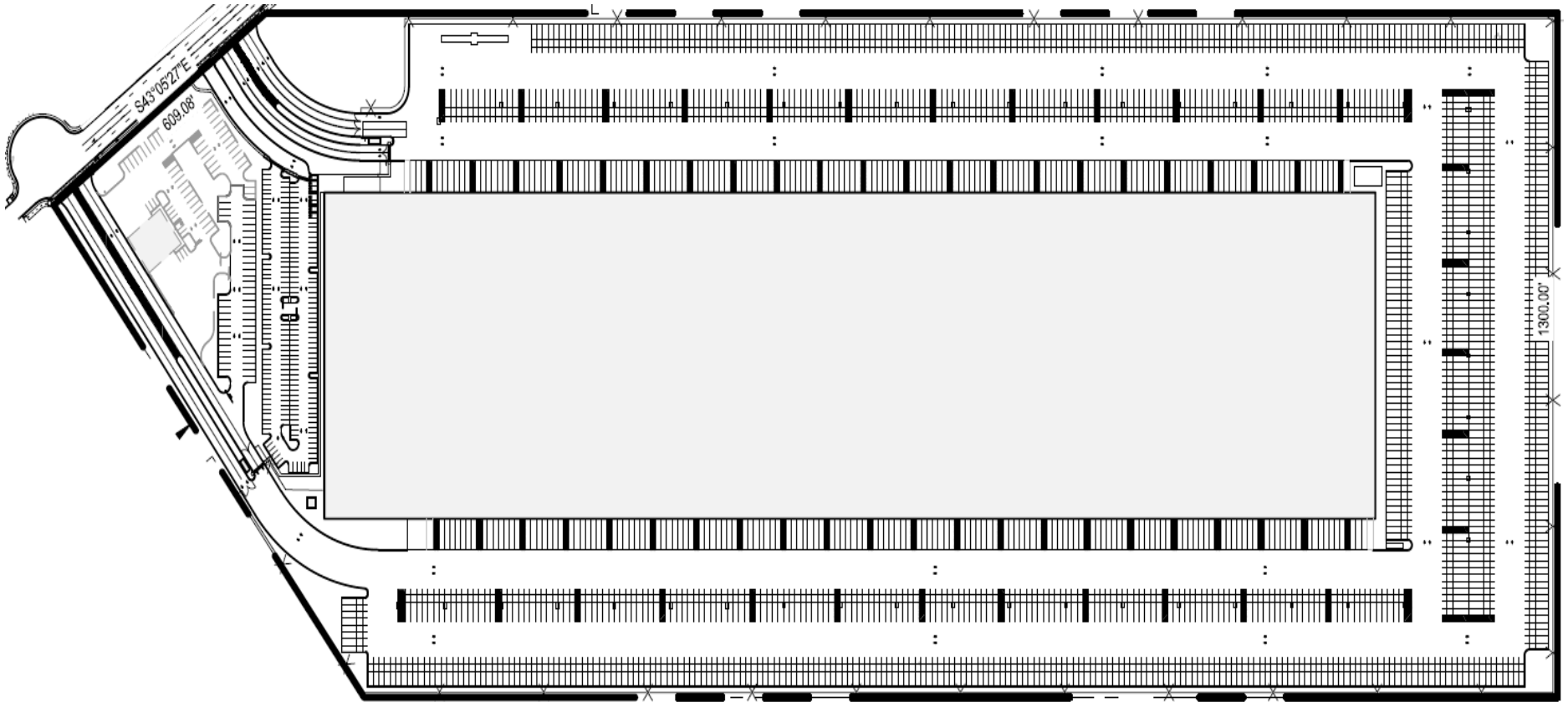


savills

FOR SUBLEASE

# Large Trailer Yard Available for Sublease

6331 Tradeport Avenue, Baltimore, MD 21219



YARD PROFILE

**+400**

Flexible Trailer Stalls for Sublease

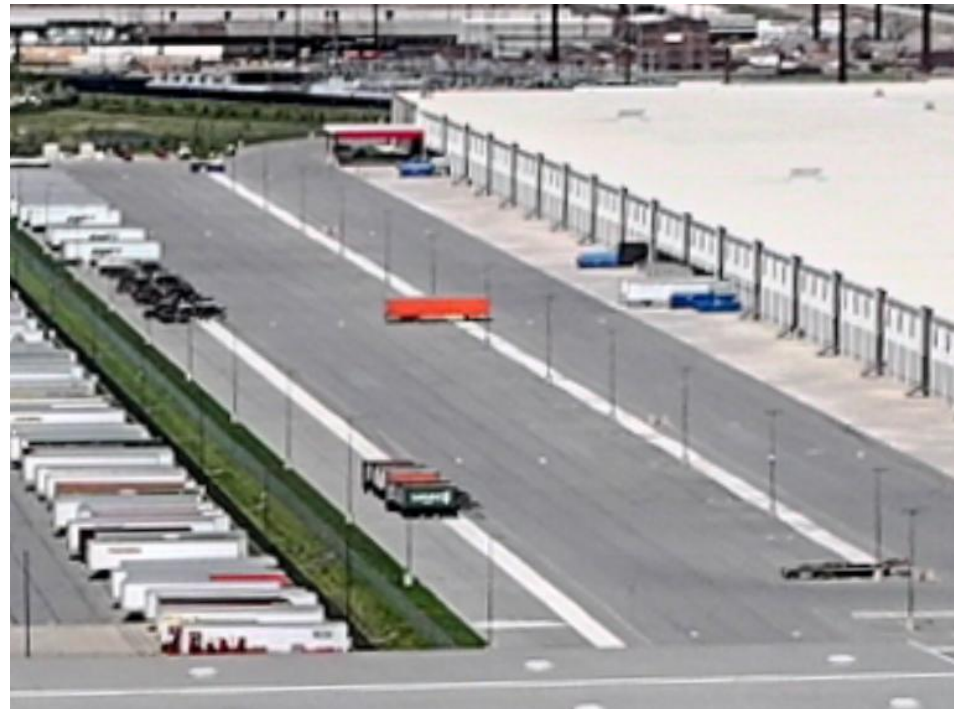
Up to 2 Years  
Flexible Term

Negotiable  
Rental Rate

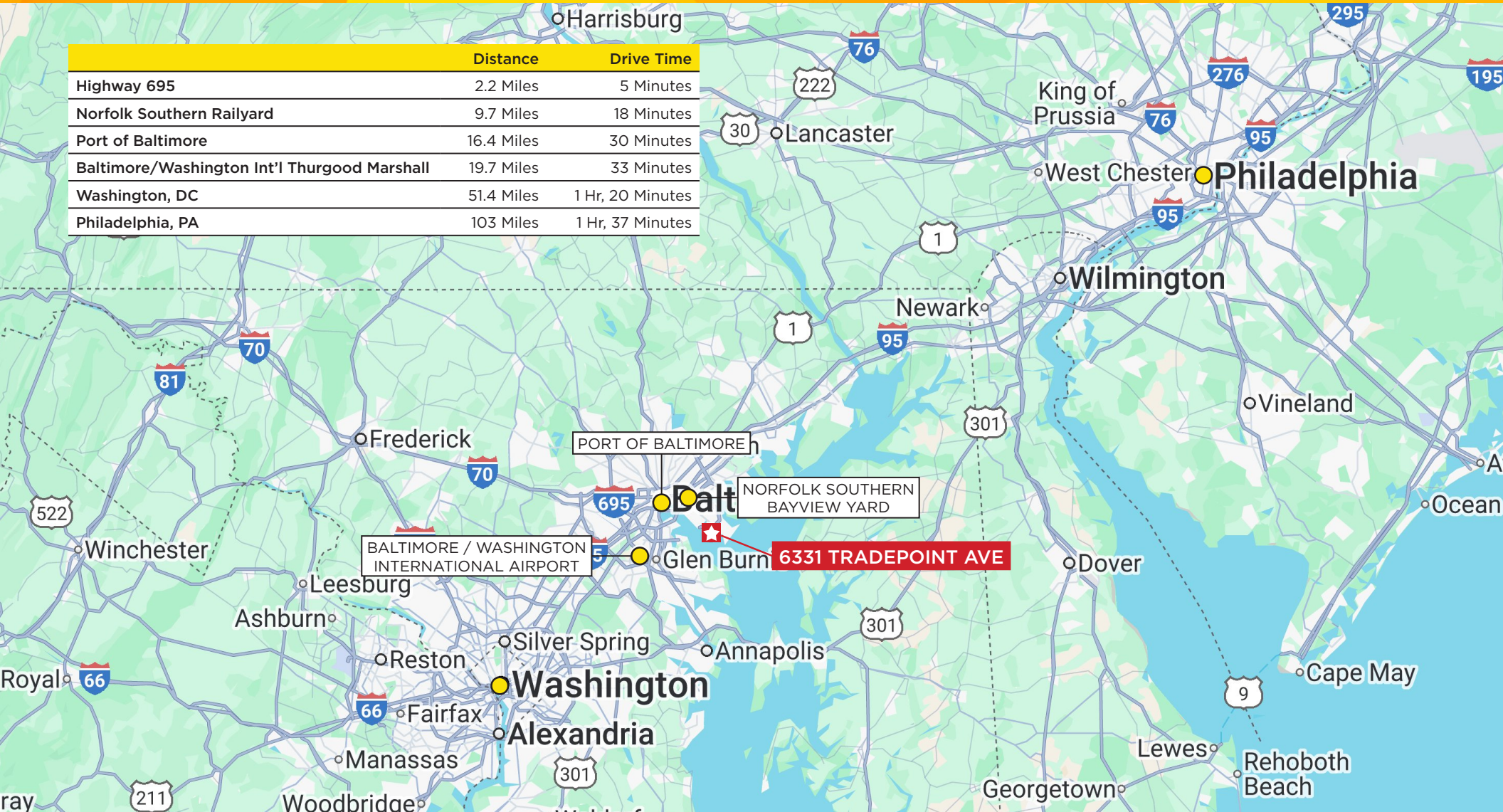
KEY HIGHLIGHTS

- Flexible location of trailer stalls available for sublease
- **Submarket:** Baltimore County East
  - **Automotive Stalls:** Abundant stalls available
  - **Drive Aisles:** 70' - 75'
  - **PavingType:** Striped, heavy pavement with 55' depth stalls along the perimeter
- **Fenced:** Swing-and-arm gate with guard shack
- **Security:** Extensive cameras and lighting throughout
- **Expandability:** Trailer stalls may be combined with nearby building's parking for a total of +900 trailer stalls.





	Distance	Drive Time
Highway 695	2.2 Miles	5 Minutes
Norfolk Southern Railyard	9.7 Miles	18 Minutes
Port of Baltimore	16.4 Miles	30 Minutes
Baltimore/Washington Int'l Thurgood Marshall	19.7 Miles	33 Minutes
Washington, DC	51.4 Miles	1 Hr, 20 Minutes
Philadelphia, PA	103 Miles	1 Hr, 37 Minutes



**Paul Danko**

Executive Managing Director  
 +1 410 844 3902  
 pdanko@savills.us  
 License #98036

**James Murray**

Industrial Coordinator  
 +1 949 706 6582  
 jpmurray@savills.us  
 License #02203049

**Wayne Lamb**

Vice Chairman  
 +1 949 706 6580  
 wlamb@savills.us  
 License #01078416

**Krestina Babamuratova**

Corporate Managing Director  
 +1 949 706 6585  
 kbabamuratova@savills.us  
 License #01802549

**Paul Danko**

Executive Managing Director  
+1 410 844 3902  
pdanko@savills.us  
License #98036

**James Murray**

Industrial Coordinator  
+1 949 706 6582  
jpmurray@savills.us  
License #02203049

**Wayne Lamb**

Vice Chairman  
+1 949 706 6580  
wlamb@savills.us  
License #01078416

**Krestina Babamuratova**

Corporate Managing Director  
+1 949 706 6585  
kbabamuratova@savills.us  
License #01802549