

# Highway 64 Land

HWY 64, LEXINGTON, NC 27292

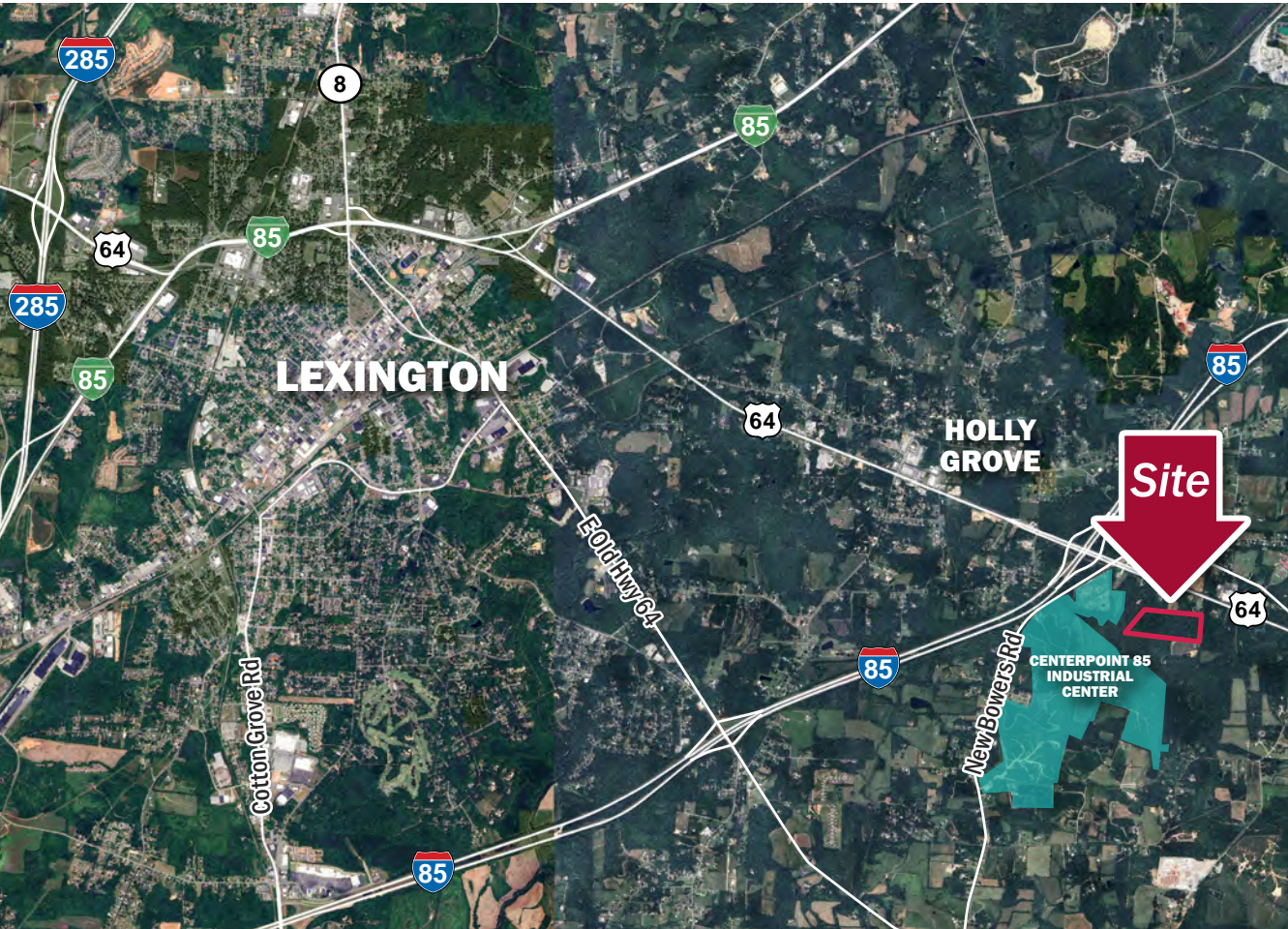


Land

FOR  
Sale

SIZE  
±32.25 AC

PRICE  
Call for Pricing



## Overview

±32.25 Acres available for future residential or industrial development

Access via Rescue Way

Within close proximity to future CenterPoint 85 Industrial Center

Davidson County Zoned: Rural Agricultural District (RA-3)

Seller will sell subject to rezoning

## ±32.25 Acres Land For Sale



Justin P. Holofchak  
Managing Partner  
(704) 577 4343  
jholofchak@mpvre.com

Chad Pyke  
Broker  
(704) 561 5238  
cpyke@mpvre.com

2400 South Boulevard | Suite 300  
Charlotte, NC 28203

[mpvre.com](http://mpvre.com)

# Highway 64 Land

HWY 64, LEXINGTON, NC 27292

## Property Overview

### Demographics

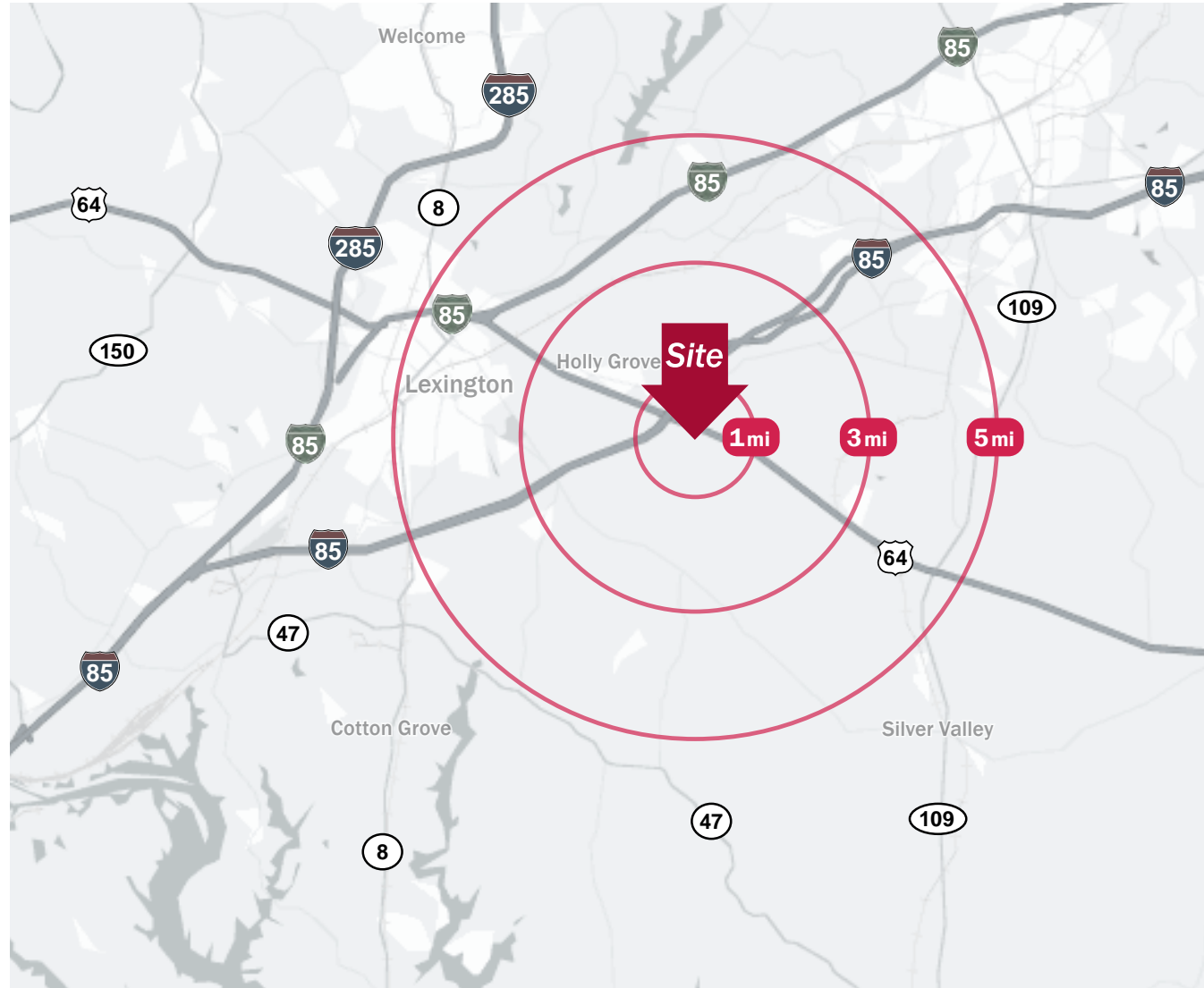
Source: Esri® 2024

	1 mile	3 mile	5 mile
Population	503	6,058	26,587
Growth Rate	0.05%	0.13%	0.17%
Avg. HH Income	\$81,793	\$80,626	\$73,724

### Traffic Count

Source: Esri® 2024

	AADT
Hwy 64	12,044 (2024)
I-85	58,000 (2024)



Justin P. Holofchak  
Managing Partner

(704) 577 4343  
jholofchak@mpvre.com

Chad Pyke  
Broker

(704) 561 5238  
cpyke@mpvre.com

2400 South Boulevard | Suite 300  
Charlotte, NC 28203

[mpvre.com](http://mpvre.com)



# Highway 64 Land

HWY 64, LEXINGTON, NC 27292

## Market Aerial



This GIS data is deemed reliable but provided "as is" without warranty of any representation of accuracy, timeliness, reliability or completeness. This map document does not represent a legal survey of the land and is for graphical purposes only. Use of this data for any purpose should be of acknowledgment of the limitations of the data, including the fact that the data is dynamic and is in a constant state of maintenance, correction, and update.



Justin P. Holofchak  
Managing Partner  
(704) 577 4343  
jholofchak@mpvre.com

Chad Pyke  
Broker  
(704) 561 5238  
cpyke@mpvre.com

2400 South Boulevard | Suite 300  
Charlotte, NC 28203

mpvre.com



# Highway 64 Land

HWY 64, LEXINGTON, NC 27292

## Nearby Industrial



**Justin P. Holofchak**  
 Managing Partner  
 (704) 577 4343  
 jholofchak@mpvre.com

**Chad Pyke**  
 Broker  
 (704) 561 5238  
 cpyke@mpvre.com

2400 South Boulevard | Suite 300  
 Charlotte, NC 28203

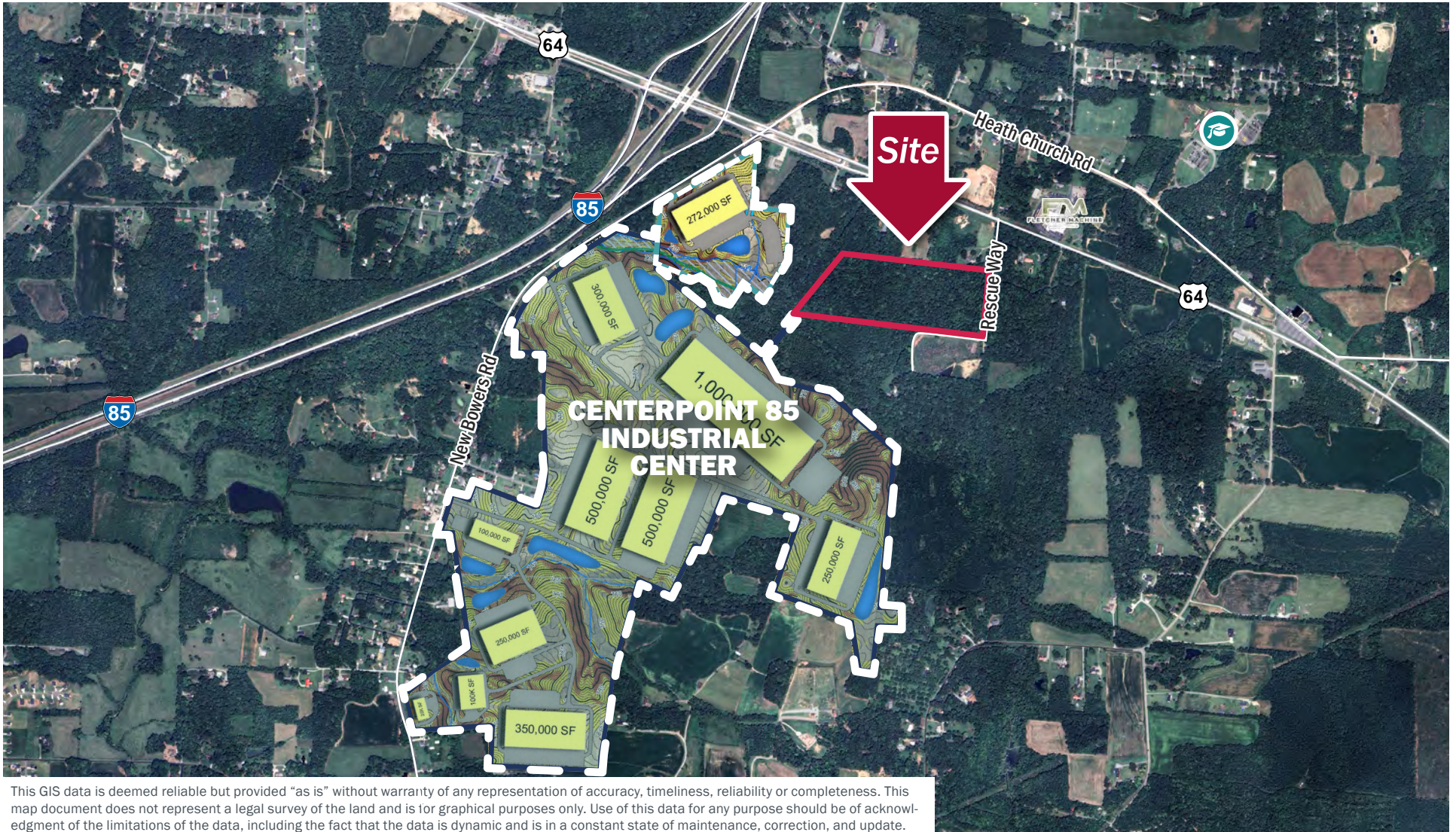
[mpvre.com](http://mpvre.com)



# Highway 64 Land

HWY 64, LEXINGTON, NC 27292

## Proximity to Industrial Center



This GIS data is deemed reliable but provided "as is" without warranty of any representation of accuracy, timeliness, reliability or completeness. This map document does not represent a legal survey of the land and is for graphical purposes only. Use of this data for any purpose should be of acknowledgment of the limitations of the data, including the fact that the data is dynamic and is in a constant state of maintenance, correction, and update.



Justin P. Holofchak  
Managing Partner

(704) 577 4343  
jholofchak@mpvre.com

Chad Pyke  
Broker

(704) 561 5238  
cpyke@mpvre.com

2400 South Boulevard | Suite 300  
Charlotte, NC 28203

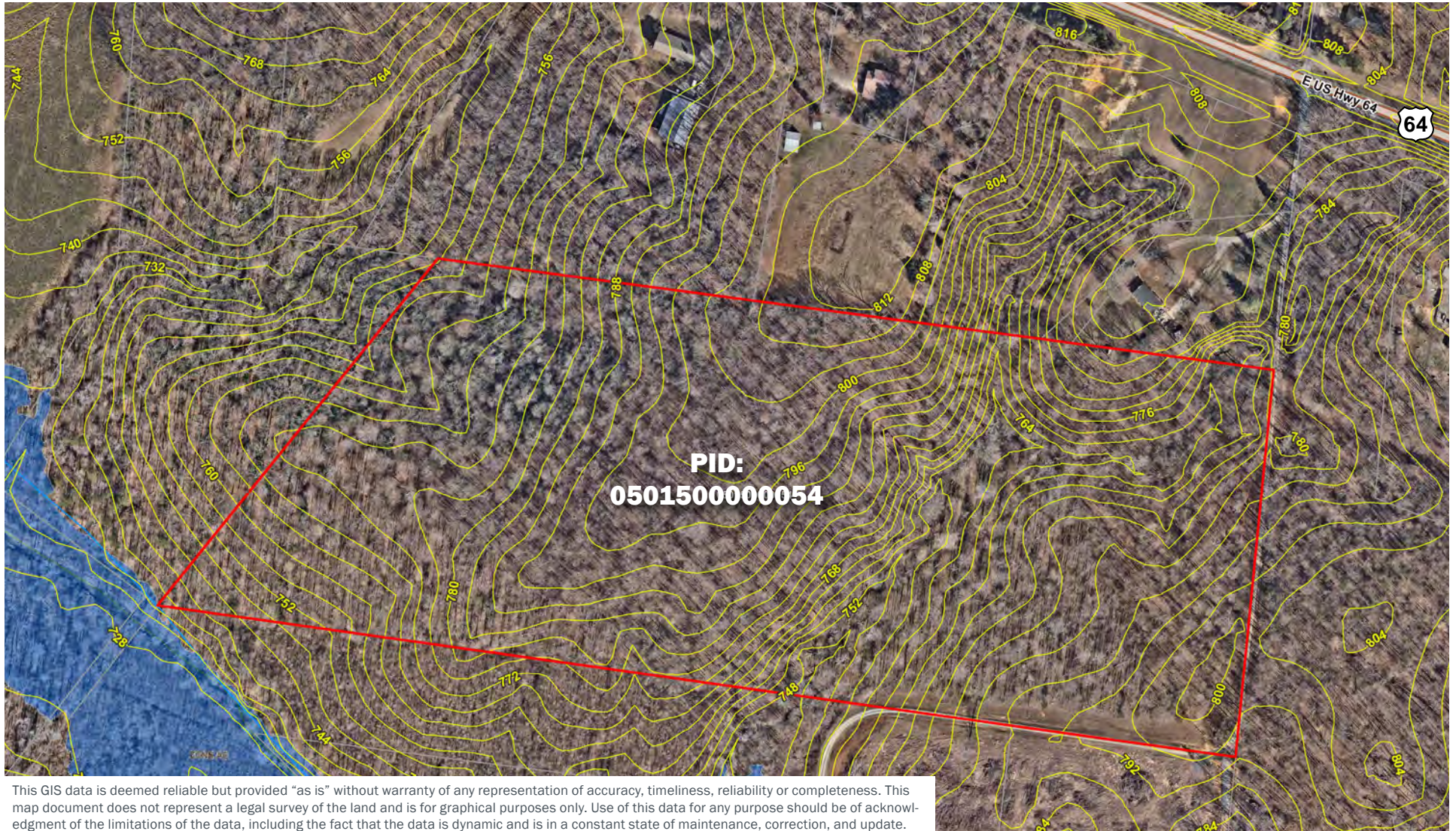
[mpvre.com](http://mpvre.com)



# Highway 64 Land

HWY 64, LEXINGTON, NC 27292

## Site Topography



This GIS data is deemed reliable but provided "as is" without warranty of any representation of accuracy, timeliness, reliability or completeness. This map document does not represent a legal survey of the land and is for graphical purposes only. Use of this data for any purpose should be of acknowledgment of the limitations of the data, including the fact that the data is dynamic and is in a constant state of maintenance, correction, and update.



**Justin P. Holofchak**  
Managing Partner

(704) 577 4343  
jholofchak@mpvre.com

**Chad Pyke**  
Broker

(704) 561 5238  
cpyke@mpvre.com

2400 South Boulevard | Suite 300  
Charlotte, NC 28203

[mpvre.com](http://mpvre.com)





Working Together

Medical | Industrial | Retail | Land | Investment | Office

contact

**Justin P. Holofchak**  
*Managing Partner*

(704) 577 4343  
jholofchak@mpvre.com

**Chad Pyke**  
*Broker*

(704) 561 5238  
cpyke@mpvre.com

2400 South Boulevard | Suite 300  
Charlotte, NC 28203

[mpvre.com](http://mpvre.com)