



FLEXIBLE SHOWROOM / WAREHOUSE PROPERTY ±9 MIN FROM HWY 90

729 W SAINT PETER ST NEW IBERIA, LA 70560



OFFERED: FOR SALE

SALE PRICE: \$385,000 (\$33.48/SF)

±11,500 SF

- Flex space, showroom + warehouse space
- ±9 minute access to Hwy 90
- Two grade-level doors

CONTACT:

MARK JOHNS
501.513.7394

800.895.9329 | <https://elifinrealty.com> | June 2026
640 Main St, Suite A, Baton Rouge, LA 70801

Broker of Record, Mathew Laborde; Licensed by the Louisiana, Mississippi, and Ohio Real Estate Commissions. This information has been secured from sources we believe to be reliable, but we make no representations or warranties, expressed or implied, as to the accuracy of the information. References to square footage or age are approximate. Interested parties must verify the information and bears all risk for any inaccuracies.

OFFERING SUMMARY



PROPERTY SUMMARY

- Now for sale, 729 W St Peter St offers a ±11,500 SF flex property with a showroom in the front and warehouse space in the rear.
- The layout allows for a variety of configurations, making the property well-suited for retail, service, or light industrial users.
- The property features two grade-level rollup doors with street access. The rear warehouse also has an exterior door and could be leased for additional income.
- Positioned at a stoplight for easy access, the site provides strong visibility along W St Peter St and convenient connectivity to surrounding areas.
- Located just a few blocks from Bouligny Plaza—home to some of New Iberia’s most popular restaurants and local businesses—and approximately ±9 minutes from Hwy 90, the property offers both local appeal and regional accessibility.
- This versatile property presents an excellent opportunity for an owner-occupant or investor seeking a showroom/warehouse combination in a central location.

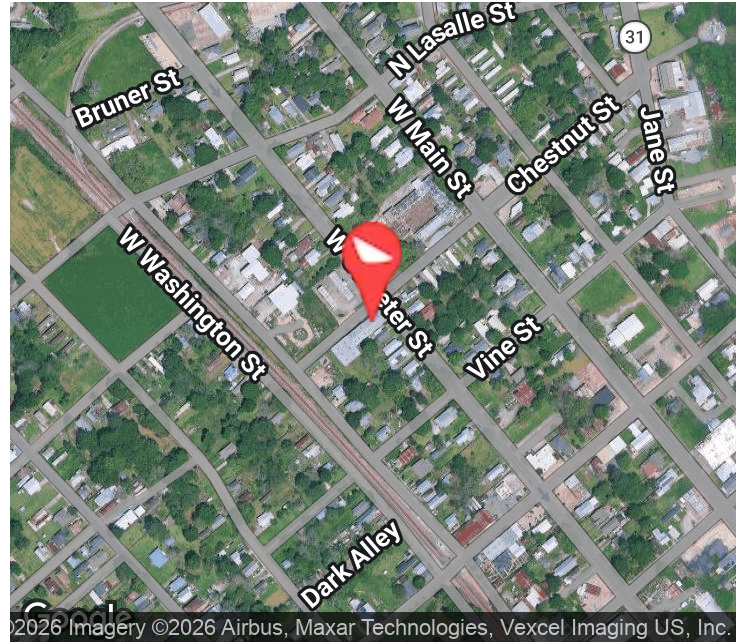
CONTACT:

MARK JOHNS
501.513.7394

800.895.9329 | <https://elifinrealty.com> | June 2026

640 Main St, Suite A, Baton Rouge, LA 70801
Broker of Record, Mathew Laborde; Licensed by the Louisiana, Mississippi, and Ohio Real Estate Commissions. This information has been secured from sources we believe to be reliable, but we make no representations or warranties, expressed or implied, as to the accuracy of the information. References to square footage or age are approximate. Interested parties must verify the information and bears all risk for any inaccuracies.

PROPERTY INFORMATION



LOCATION INFORMATION

Street Address	729 W Saint Peter St
City, State, Zip	New Iberia, LA 70560
County	Iberia Parish

PROPERTY INFORMATION

Property Type	Industrial
Property Subtype	Flex Space
Zoning	C-1
APN #	0500964700

CONTACT:
MARK JOHNS
 501.513.7394

800.895.9329 | <https://elifinrealty.com> | June 2026
 640 Main St, Suite A, Baton Rouge, LA 70801
 Broker of Record, Mathew Laborde; Licensed by the Louisiana, Mississippi, and Ohio Real Estate Commissions. This information has been secured from sources we believe to be reliable, but we make no representations or warranties, expressed or implied, as to the accuracy of the information. References to square footage or age are approximate. Interested parties must verify the information and bears all risk for any inaccuracies.

ADDITIONAL PHOTOS



CONTACT:
MARK JOHNS
501.513.7394

800.895.9329 | <https://elifinrealty.com> | June 2026
640 Main St, Suite A, Baton Rouge, LA 70801
Broker of Record, Mathew Laborde; Licensed by the Louisiana, Mississippi, and Ohio Real Estate Commissions. This information has been secured from sources we believe to be reliable, but we make no representations or warranties, expressed or implied, as to the accuracy of the information. References to square footage or age are approximate. Interested parties must verify the information and bears all risk for any inaccuracies.

INTERIOR PHOTOS



CONTACT:
MARK JOHNS
501.513.7394

800.895.9329 | <https://elifinrealty.com> | June 2026
640 Main St, Suite A, Baton Rouge, LA 70801
Broker of Record, Mathew Laborde; Licensed by the Louisiana, Mississippi, and Ohio Real Estate Commissions. This information has been secured from sources we believe to be reliable, but we make no representations or warranties, expressed or implied, as to the accuracy of the information. References to square footage or age are approximate. Interested parties must verify the information and bears all risk for any inaccuracies.

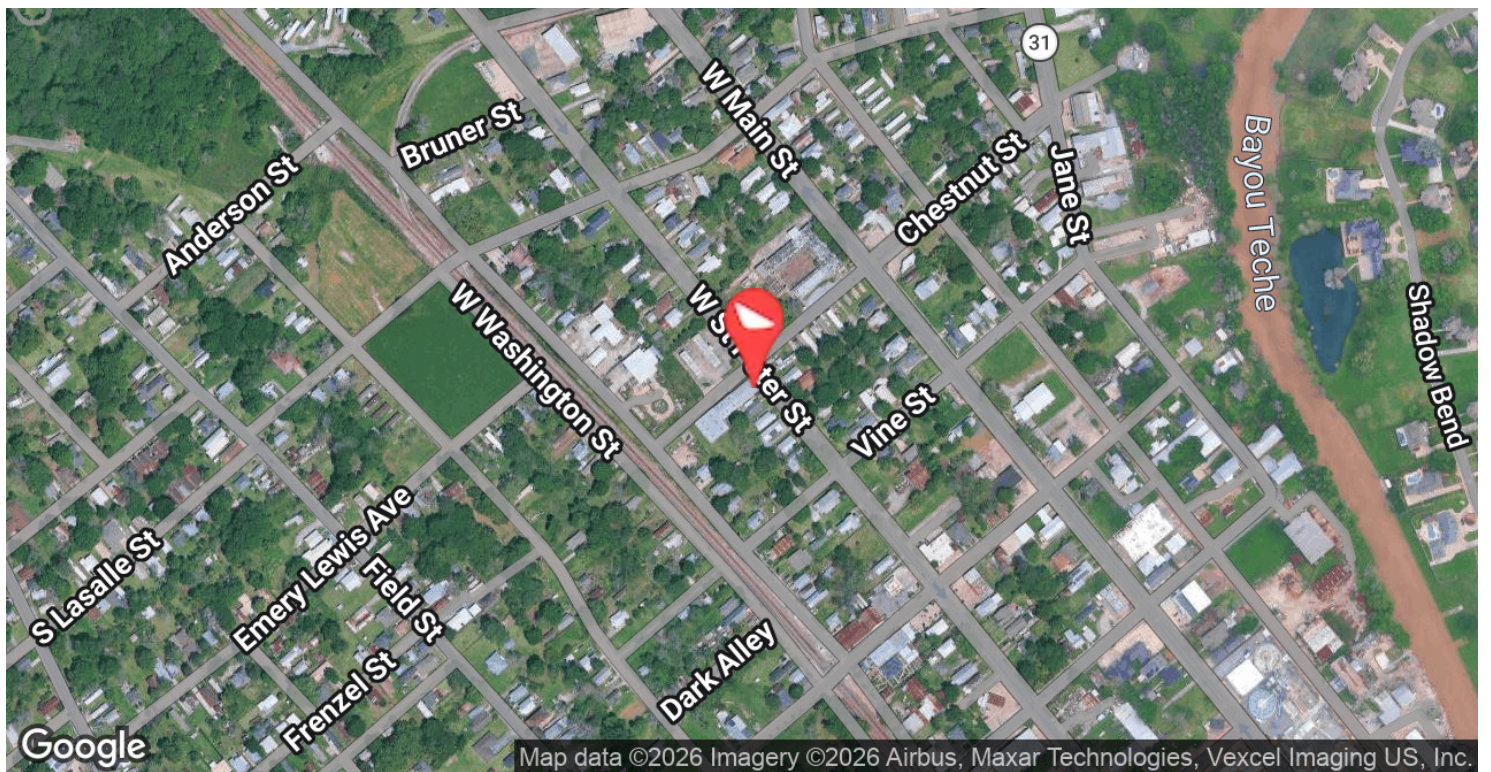
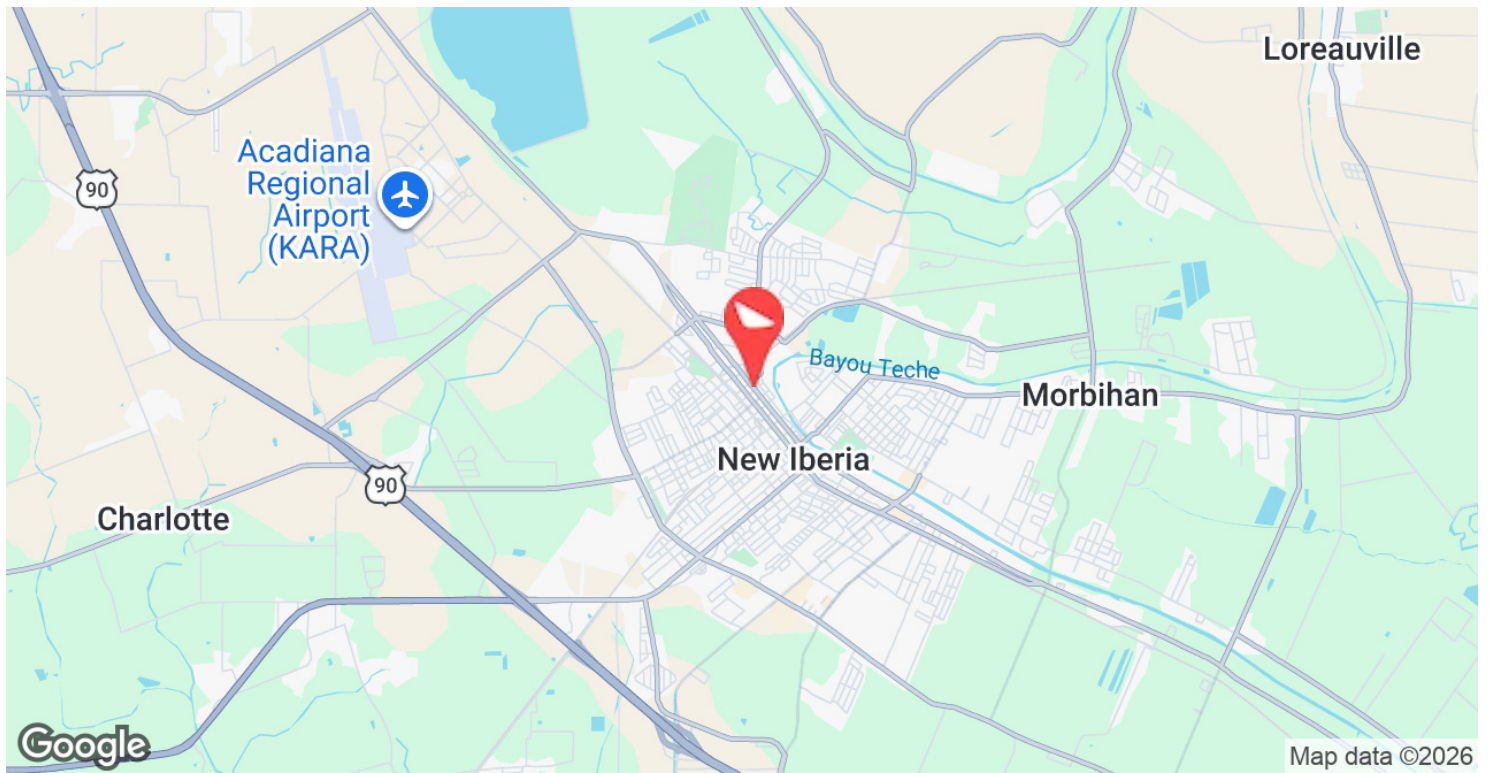
ADDITIONAL PHOTOS



CONTACT:
MARK JOHNS
501.513.7394

800.895.9329 | <https://elifinrealty.com> | June 2026
640 Main St, Suite A, Baton Rouge, LA 70801
Broker of Record, Mathew Laborde; Licensed by the Louisiana, Mississippi, and Ohio Real Estate Commissions. This information has been secured from sources we believe to be reliable, but we make no representations or warranties, expressed or implied, as to the accuracy of the information. References to square footage or age are approximate. Interested parties must verify the information and bears all risk for any inaccuracies.

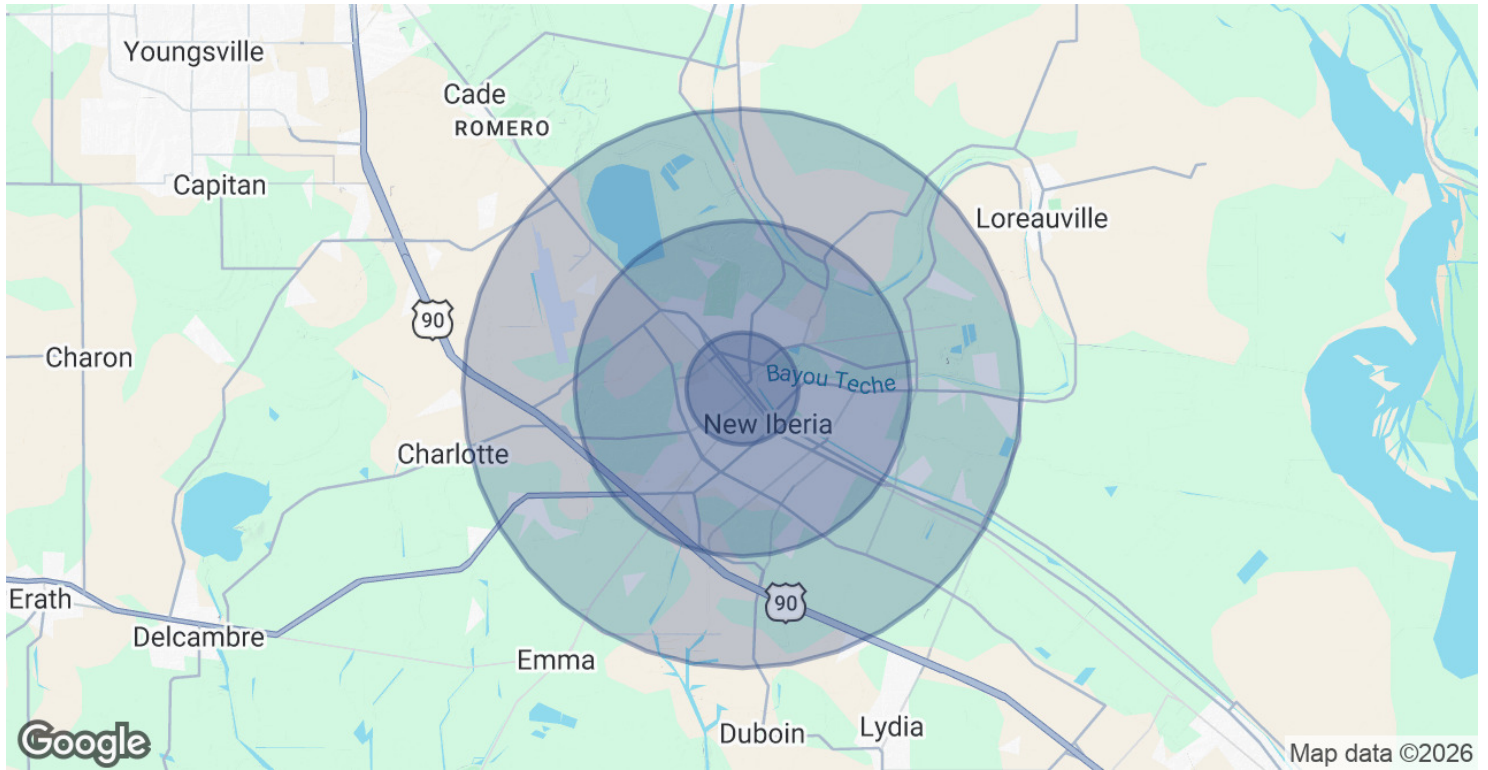
LOCATION MAP



CONTACT:
MARK JOHNS
501.513.7394

800.895.9329 | <https://elifinrealty.com> | June 2026
640 Main St, Suite A, Baton Rouge, LA 70801
Broker of Record, Mathew Laborde; Licensed by the Louisiana, Mississippi, and Ohio Real Estate Commissions. This information has been secured from sources we believe to be reliable, but we make no representations or warranties, expressed or implied, as to the accuracy of the information. References to square footage or age are approximate. Interested parties must verify the information and bears all risk for any inaccuracies.

DEMOGRAPHICS MAP & REPORT



POPULATION	1 MILE	3 MILES	5 MILES
Total Population	8,991	31,793	43,857
Average Age	40	40	40
Average Age (Male)	38	39	39
Average Age (Female)	41	41	41

HOUSEHOLDS & INCOME	1 MILE	3 MILES	5 MILES
Total Households	3,709	12,765	17,224
# of Persons per HH	2.4	2.5	2.5
Average HH Income	\$53,255	\$66,007	\$70,857
Average House Value	\$150,500	\$181,220	\$190,015

2020 American Community Survey (ACS)

CONTACT:
MARK JOHNS
 501.513.7394

800.895.9329 | <https://elifinrealty.com> | June 2026
 640 Main St, Suite A, Baton Rouge, LA 70801
 Broker of Record, Mathew Laborde; Licensed by the Louisiana, Mississippi, and Ohio Real Estate Commissions. This information has been secured from sources we believe to be reliable, but we make no representations or warranties, expressed or implied, as to the accuracy of the information. References to square footage or age are approximate. Interested parties must verify the information and bears all risk for any inaccuracies.

ZONING MAP



ZONING TYPE

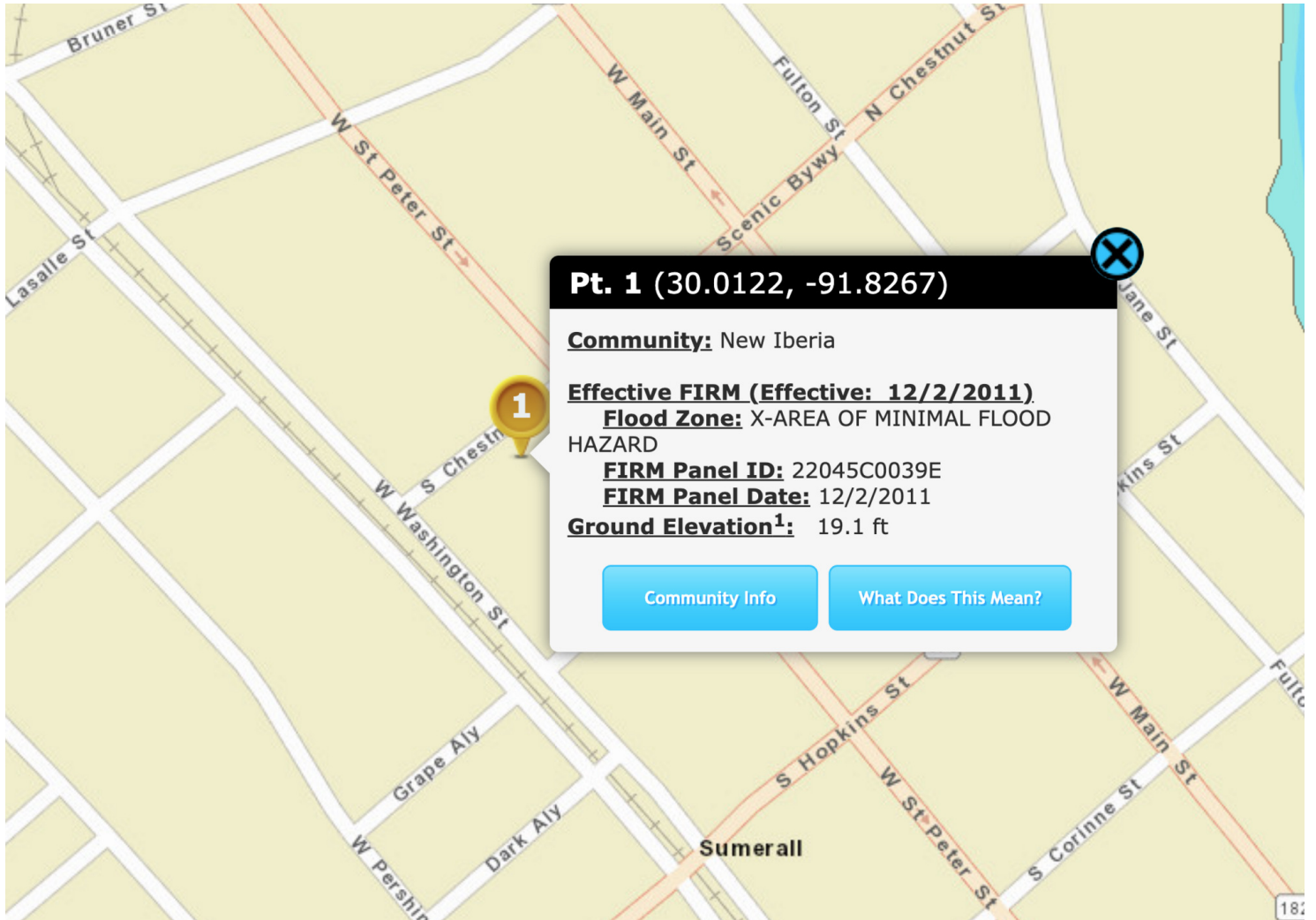
C1 - Commercial

Source: The municipality in which the property is located

CONTACT:

MARK JOHNS
501.513.7394

FLOOD ZONE MAP



FLOOD ZONING TYPE

FLOOD ZONE X

Source: maps.lsuagcenter.com/floodmaps

CONTACT:

MARK JOHNS
501.513.7394