



FOR LEASE

487 BRYANT STREET

CREATIVE SOUTH PARK OFFICE
SPACE



WWW.TCPRE.COM

ZACH HAUPERT zhaupert@tcpre.com
D 415.539.1121 | C 415.812.1219

MICHAEL SANBERG msanberg@tcpre.com
D 415.539.1103 | C 415.697.6088

487 BRYANT STREET

PROPERTY SUMMARY

ADDRESS

487 Bryant Street, San Francisco, CA 94107

AVAILABLE SPACE

Second Floor: +/- 3,598 Square Feet

RENTAL RATE

Second Floor: \$24 / Square Foot / Year, IG

AVAILABLE

Immediately



BUILDING ATTRIBUTES

- + Fully Built-Out Creative Office Spaces
- + Ideal South Park Location
- + Motivated Ownership Group
- + Elevator Access
- + Full HVAC
- + Move-in Ready / Furniture Available
- + Walkable to Caltrain, BART, MUNI, & Oracle Park



487 BRYANT STREET

PROPERTY SUMMARY | SECOND FLOOR

ADDRESS

487 Bryant Street, San Francisco, CA 94107

AVAILABLE SPACE

Second Floor: +/- 3,598 Square Feet

RENTAL RATE

Second Floor: \$24 / Square Foot / Year, IG

AVAILABLE

Immediately



BUILDING ATTRIBUTES

- + Fully Built-Out Creative Office Space
- + Six (6) Glass Meeting Rooms
- + One (1) Glass Boardroom
- + Elevator Access
- + Full HVAC
- + Two (2) Restrooms
- + Kitchenette
- + Move-in Ready / Furniture Available





SECOND FLOOR

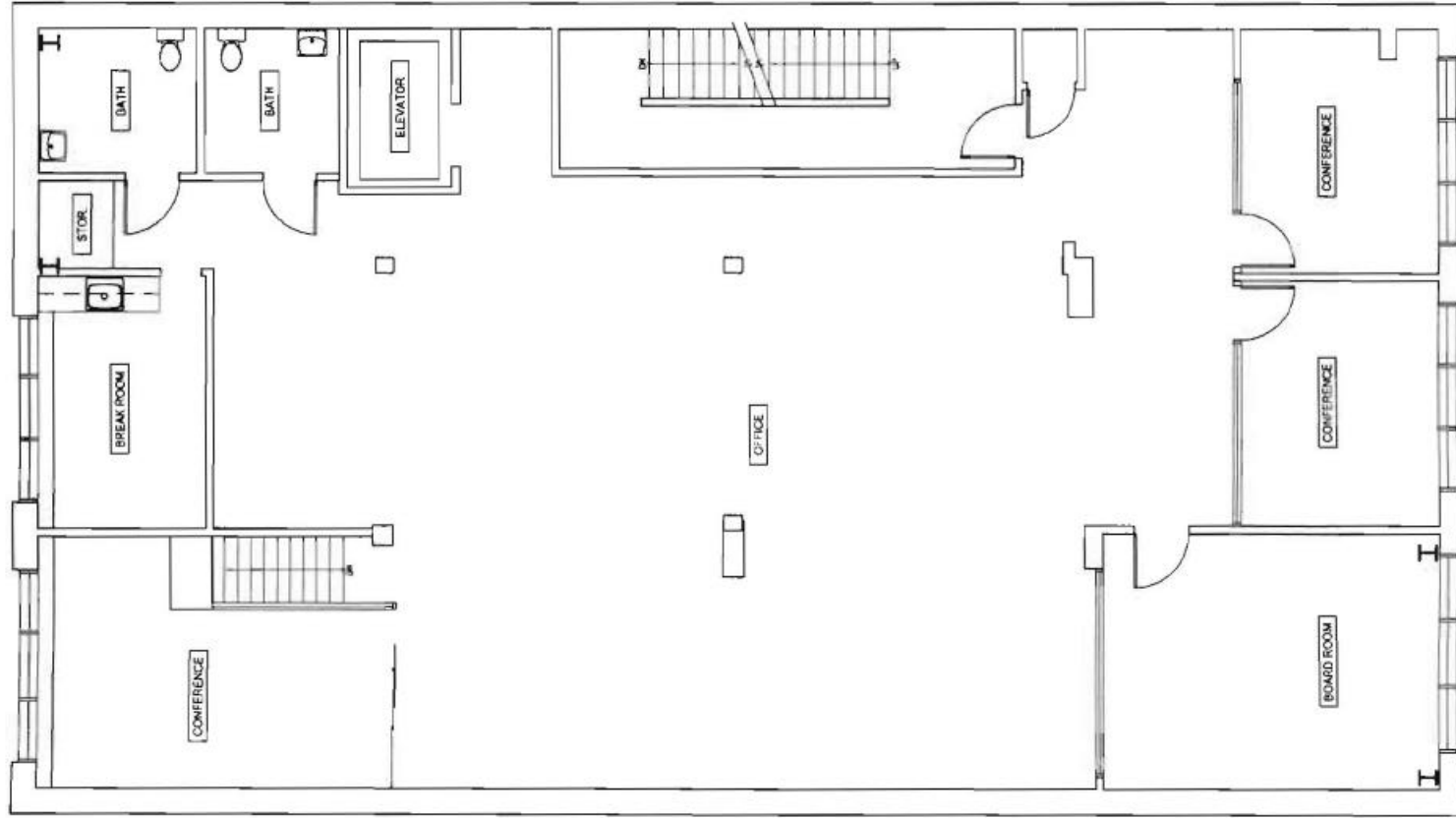


487 BRYANT STREET

Floor Plans

Second Floor

+/- 3,598 Square Feet



BRYANT STREET

487 BRYANT STREET



LOCATION OVERVIEW

Highly desirable South Park location, walkable to nearby amenities and close proximity to Oracle Field.



09 MIN to 2nd & King Muni
09 MIN to Oracle Park
10 MIN to 4th St Caltrain



06 MIN to Union Square
07 MIN to Financial District
08 MIN to Chase Center

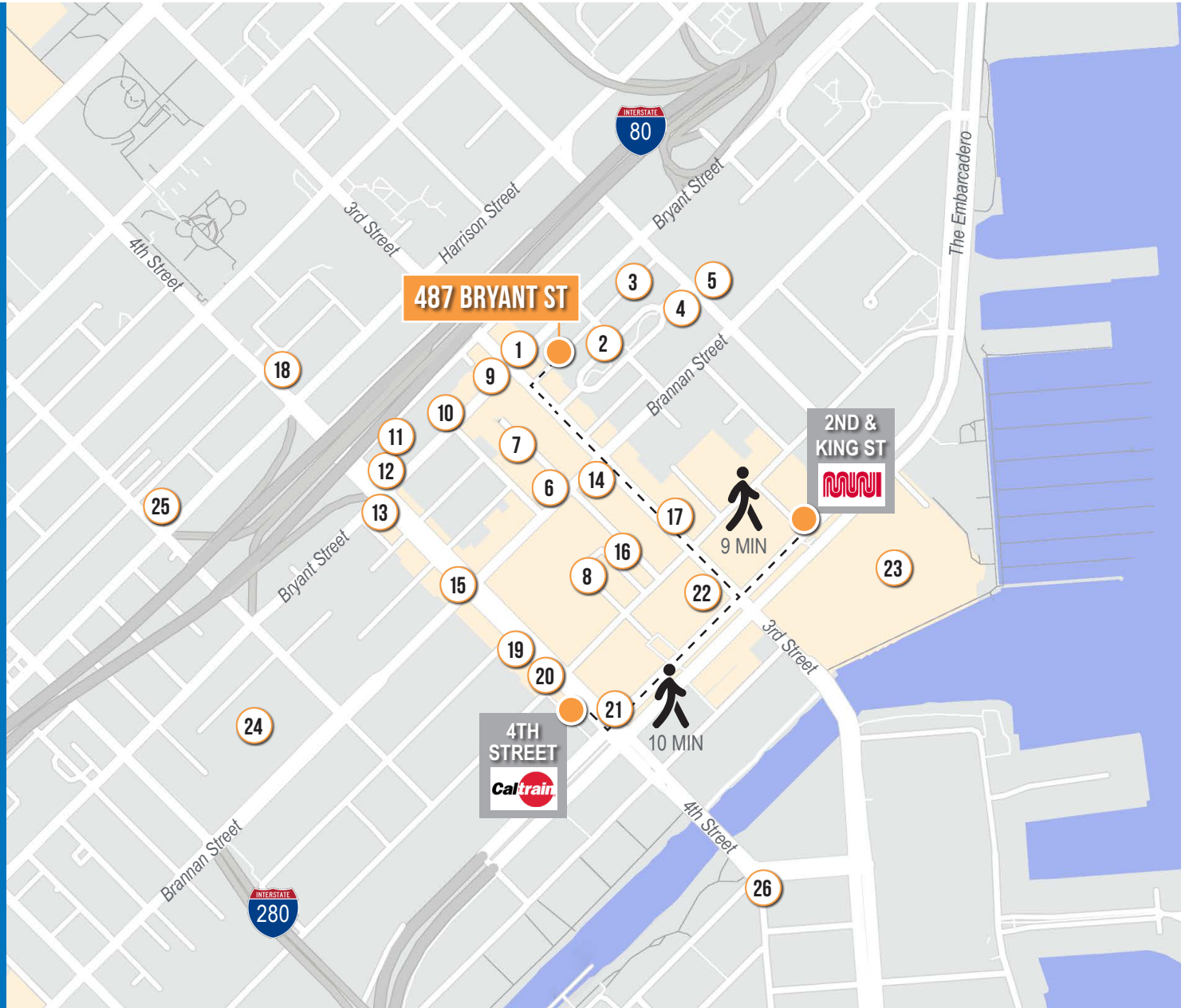


01 MIN to 80 On-Ramp
05 MIN to 280 On-Ramp
08 MIN to 101 On-Ramp

487 BRYANT STREET

NEARBY AMENITIES

- 1.....Flour & Branch
- 2.....Caffe Centro
- 3.....Blue Bottle Coffee
- 4.....The Farmacy
- 5.....Movida
- 6.....Brickhouse
- 7.....Wabi Sabi
- 8.....ROOFTOP 25
- 9.....Hakashi
- 10.....Black Hammer Brewing
- 11.....Shell Gas Station
- 12.....Thriller Social Club
- 13.....The Hotel Utah Saloon
- 14.....Local Tap
- 15.....Marlowe
- 16.....Little Skillet
- 17.....Alchemist Bar & Lounge
- 18.....Whole Foods Market
- 19.....The UPS Store
- 20.....Walgreens
- 21.....Safeway
- 22.....Lucky Strike San Francisco
- 23.....Oracle Park
- 24.....San Francisco Flower Mart
- 25.....All Star Donuts
- 26.....Gus's Community Market



487 BRYANT STREET



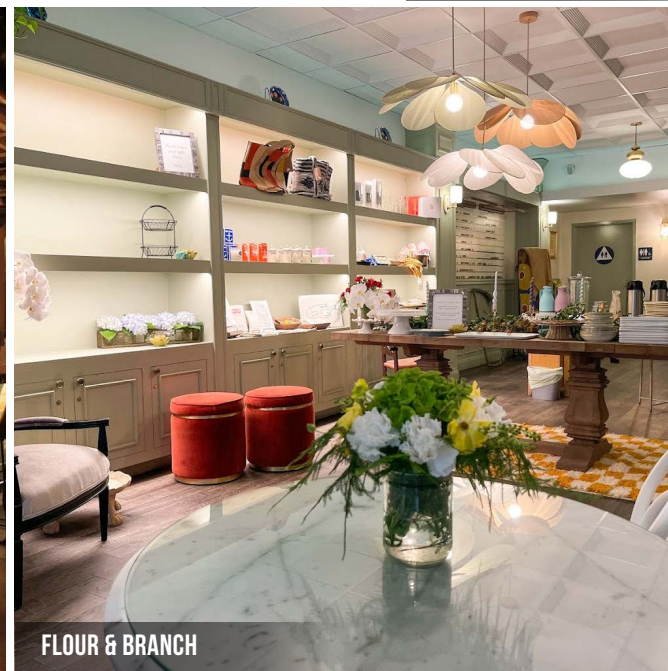
MARLOWE



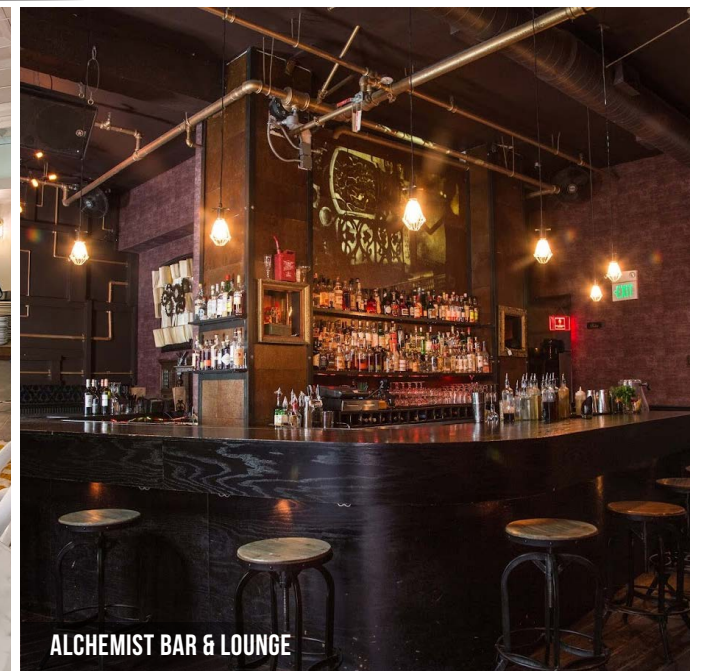
ROOFTOP 25



LITTLE SKILLET



FLOUR & BRANCH



ALCHEMIST BAR & LOUNGE

487 BRYANT
STREET



Corp. Lic. 01112906
www.tcpre.com

ZACH HAUPERT

D 415.539.1121 C 415.812.1219
zhaupert@tcpre.com DRE # 01822907

MICHAEL SANBERG

D 415.539.1103 C 415.697.6088
msanberg@tcpre.com DRE # 01930041

This document has been prepared by Touchstone Commercial Partners for advertising and general information only. Touchstone Commercial Partners makes no guarantees, representations or warranties of any kind, expressed or implied, regarding the information including, but not limited to, warranties of content, accuracy and reliability. Any interested party should undertake their own inquiries as to the accuracy of the information. Touchstone Commercial Partners excludes unequivocally all inferred or implied terms, conditions and warranties arising out of this document and excludes all liability for loss and damages arising there from. This publication is the copyrighted property of Touchstone Commercial Partners and/or its licensor(s). ©2025. All rights reserved.