



**MOUNTAIN WEST**  
COMMERCIAL REAL ESTATE



# SHOPKO

4060 RIVERDALE ROAD • RIVERDALE • UTAH • 84405

## FOR LEASE

### PROPERTY SPECS

- 25,000 – 95,082 SF Available
- Pad Opportunities Available
- Ample Parking
- 36,000 ADT on Riverdale Road
- 9.81 Acres



**1 MILE**  
**11,246**  
2018 EST.  
POPULATION



**3,822**  
2018 EST.  
HOUSEHOLDS



**\$49,656**  
MEDIAN HH  
INCOME

**3 MILES**  
**87,020**  
2018 EST.  
POPULATION

**31,393**  
2018 EST.  
HOUSEHOLDS

**\$52,108**  
MEDIAN HH  
INCOME

**5 MILES**  
**171,965**  
2018 EST.  
POPULATION

**59,611**  
2018 EST.  
HOUSEHOLDS

**\$56,231**  
MEDIAN HH  
INCOME

### SURROUNDING TENANTS INCLUDE:

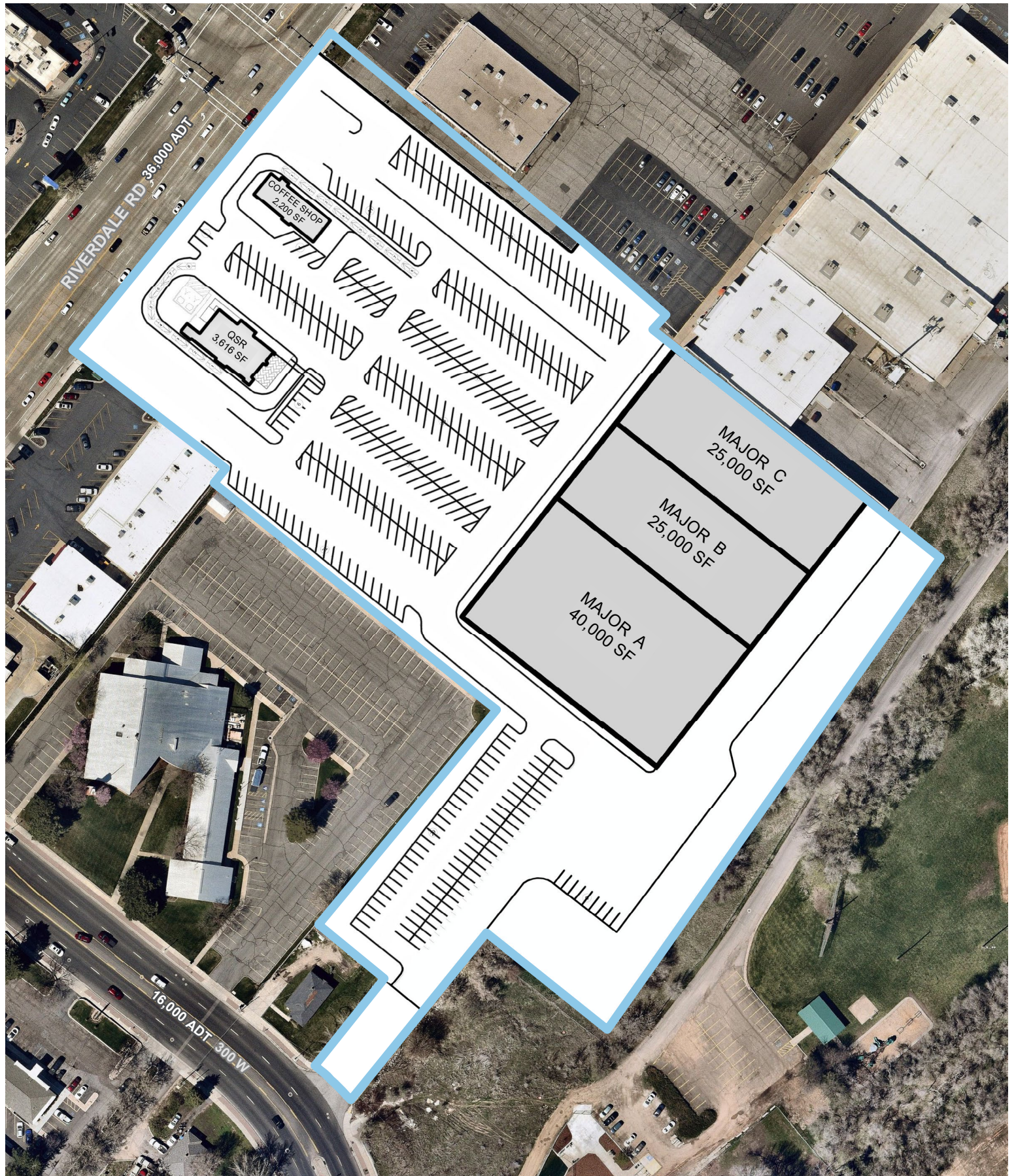


### CONTACT:





# SHOPKO



312 East South Temple | Salt Lake City, Utah 84111 | Office 801.456.8800 | [www.mtnwest.com](http://www.mtnwest.com)

This statement with the information it contains is given with the understanding that all negotiations relating to the purchase, renting or leasing of the property described above shall be conducted through this office. The above information while not guaranteed has been secured from sources we believe to be reliable.



# SHOPKO

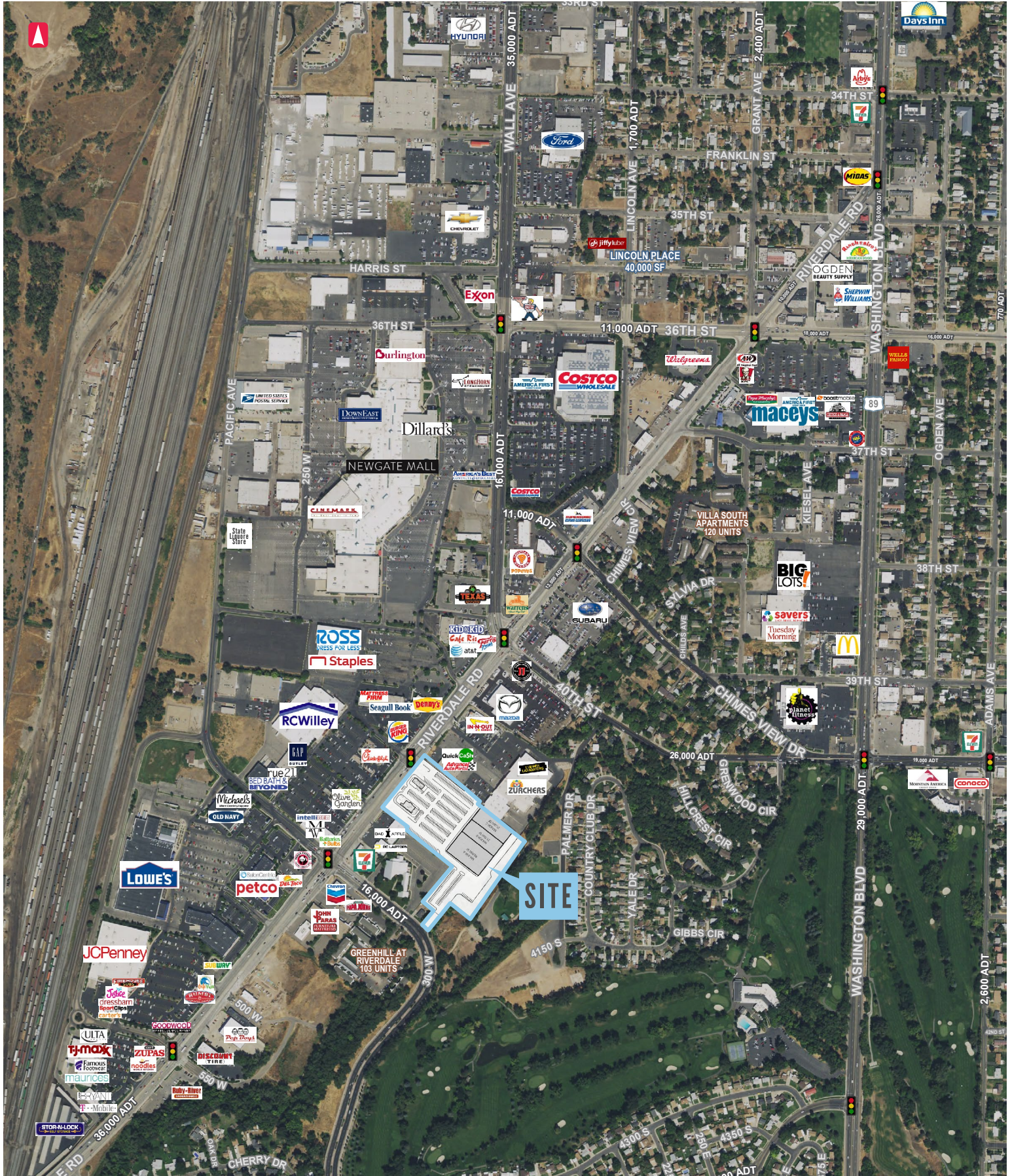


312 East South Temple | Salt Lake City, Utah 84111 | Office 801.456.8800 | [www.mtnwest.com](http://www.mtnwest.com)

This statement with the information it contains is given with the understanding that all negotiations relating to the purchase, renting or leasing of the property described above shall be conducted through this office. The above information while not guaranteed has been secured from sources we believe to be reliable.



# SHOPKO



312 East South Temple | Salt Lake City, Utah 84111 | Office 801.456.8800 | [www.mtnwest.com](http://www.mtnwest.com)

This statement with the information it contains is given with the understanding that all negotiations relating to the purchase, renting or leasing of the property described above shall be conducted through this office. The above information while not guaranteed has been secured from sources we believe to be reliable.