



LANDMARK  
COMMERCIAL

# HUNTLEY YARDS RETAIL/OFFICE SPACES FOR LEASE

2120 N WOODLAWN ST, WICHITA, KS

JOHN POTTS | 316.631.2797 | DON PIROS | 316.990.0606 | [www.landmarkrealestate.net](http://www.landmarkrealestate.net)

All information is deemed to be accurate, however, Broker makes no guarantee as to the accuracy of the terms and conditions represented herein.



# PROPERTY SUMMARY

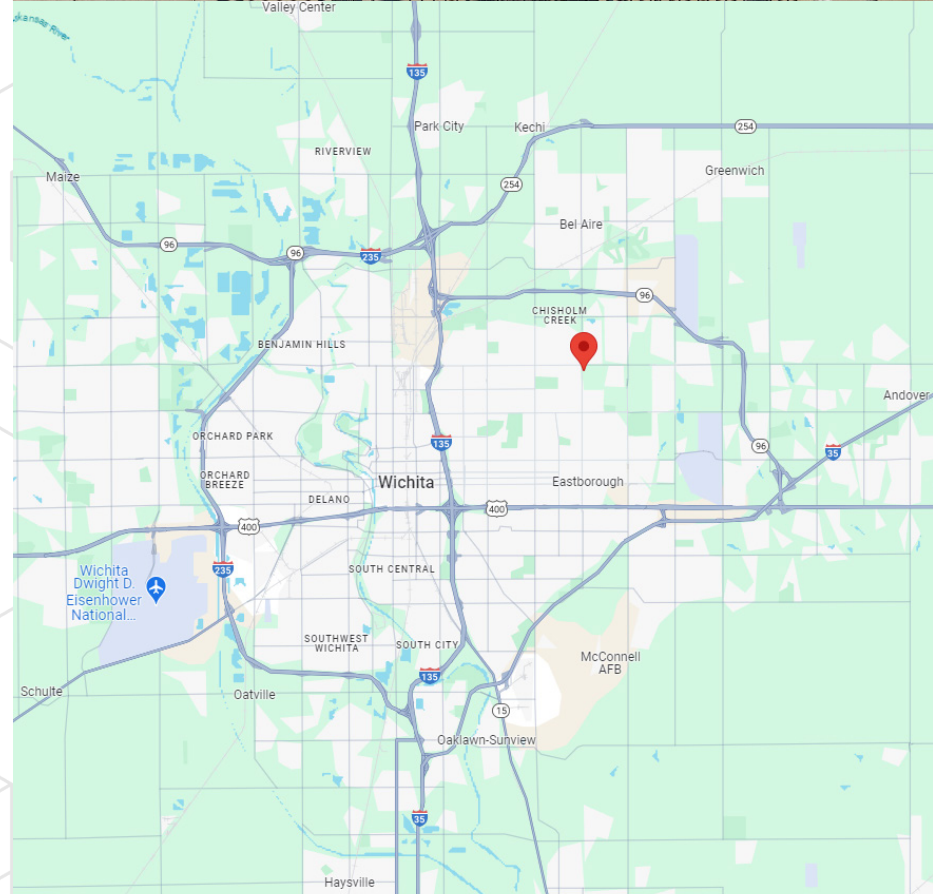
LEASE RATE	\$9.00 - \$12.75
BUILDING SIZE	44,628 SF
LOT SIZE	782,214 SF
TRAFFIC COUNT	36,818 VPD at 21st and Woodlawn

## HIGHLIGHTS

- GREAT OPEN SPACE FOR RETAIL OR OFFICE
- 7 BRAND NEW SPACES ON THE NORTH END
- CENTER IS NEWLY RENOVATED WITH NEW PAINTING AND FACADE, WITH MORE IMPROVEMENTS COMING WITH NEW LANDSCAPING, COURTYARD AND LIGHTING
- CENTER ANCHORS INCLUDE DOLLAR TREE & OLLIE'S BARGAIN OUTLET ALONG WITH A GREAT EXISTING TENANT MIX
- LOCATED 1 MILE EAST OF WICHITA STATE UNIVERSITY, 1 MILE WEST OF BRADLEY FAIR AND TALLGRASS SHOPPING CENTER
- AREA NEIGHBORS: SUBWAY, SPANGLES, JIFFY LUBE, KFC, BURGER KING, CLUB CARWASH, WENDY'S, EMPRISE BANK, DOLLAR TREE, TACO SHOP, HEADSHOTS BAR & GRILL, OLLIE'S BARGAIN OUTLET AND MORE!

## DEMOGRAPHICS

	1 MILE	3 MILES	5 MILES
POPULATION	11,373	71,555	171,408
HOUSEHOLDS	5,321	29,937	70,378
AVG HH INCOME	\$86,090	\$100,590	\$91,844



## HUNTLEY YARDS - 2120 N Woodlawn

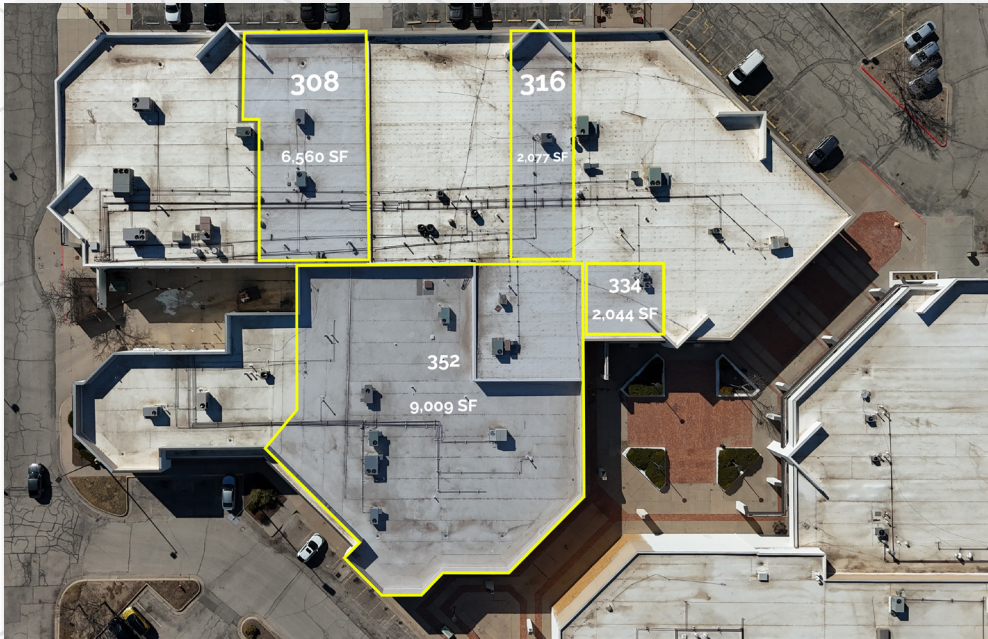


BLDG	SUITE	TENANT	SQUARE FEET
2020	220	Ollie's Bargain Outlet	29,104
2020	325	State Beauty Supply	6,198
2020	350	Gall's	2,091
2020	360	Gall's	2,112
2020	365	Touba Hair Braiding	1,013
2020	380	Vision Care 4 Life	1,151
2020	390	Vision Care 4 Life	2,187
2020	405	Karar Academy	1,224
2020	420	Massage O'Clock	1,938
2020	450	AVAILABLE	1,732
2020	460	Mark Paris The Shoppe	1,625
2020	470	Mark Paris The Shoppe	1,884
2020	550	AVAILABLE	2,897
2020	570	AVAILABLE	1,165
2020	600	Flawless University	1,745
2020	620	JST Therapy Solutions	2,600
2020	650	St. Francis Ministries	795
2020	660	Trieu Chiropractor	1,002
2120	300	Miley's Beauty Bar	6,847
2120	308	AVAILABLE	6,560
2120	312	Up N' Smoke	2,391
2120	314	New Century Imports	3,002
2120	316	AVAILABLE	2,077
2120	324	Headshots Bar & Grill	6,369
2120	328	Headshots Bar & Grill	
2120	333	Friedberg Photography	963
2120	334	AVAILABLE	2,044
2120	352	AVAILABLE	9,009
2120	364	Level Up ICT	1,800
2120	370	The Grandeur	2,603
2120	406	AVAILABLE	1,391
2120	408	Ethereal Beauty Salon	1,147
2120	414	Dollar Tree	12,800
2120	420	AVAILABLE	10,940
2120	426	VIMA	28,723
2120	450	STORAGE	3,922
2120	455	STORAGE	13,280
2120	460	WFM Auctions	4,133
2120	470	STORAGE	9,992
2120	100	AVAILABLE	1,956
2120	200	AVAILABLE	1,852
2120	300	AVAILABLE	1,852
2120	400	AVAILABLE	1,852
2120	500	AVAILABLE	1,852
2120	600	AVAILABLE	1,852
2120	700	AVAILABLE	1,852



# PHOTOS

HUNTLEY YARDS - 2120 N Woodlawn





# AERIAL

HUNTLEY YARDS







## LANDMARK COMMERCIAL REAL ESTATE

156 North Emporia  
Wichita, Kansas 67202  
[www.landmarkrealestate.net](http://www.landmarkrealestate.net)

### For More Information:

#### JOHN POTTS

SALES ASSOCIATE & PROPERTY MANAGER

Mobile: 316.631.2797  
[jpotts@landmarkrealestate.net](mailto:jpotts@landmarkrealestate.net)

#### DON PIROS, CCIM

SR. VICE PRESIDENT & SALES ASSOCIATE

Mobile: 316.990.0606  
[dpiros@landmarkrealestate.net](mailto:dpiros@landmarkrealestate.net)



## ABOUT LANDMARK

Landmark Commercial Real Estate, Inc. has extensive experience in the leasing and sales of retail, office, restaurant and industrial properties, as well as property management. We represent both Owners and Tenants/Buyers. Our extensive experience with both sides of the transaction gives us added insight in negotiating transactions that work for both parties. Landmark Commercial Real Estate maintains a large property database, which we utilize to provide Tenants with quick and reliable information. Landmark is also experienced in all phases of commercial real estate development including evaluation, conception, site selection, site planning, developmental services, construction management and leasing.

Landmark prides itself on our success in focusing on leasing and marketing properties for sale, lease and development. Many of the properties we handle are owned by institutional owners, investors and developers, who demand a high level of reporting and results. We are selective in the Listings that we accept, and we provide a commitment to results through implementation of a strategic marketing plan on every property.

## DISCLAIMER

Information included herein was provided by third parties and should only be used for informational purposes. Landmark Commercial Real Estate, Inc and their respective agents, representatives, and employees, (i) make no representations or warranties of any kind, express or implied, with respect to the accuracy or completeness of any information included herein, and (ii) shall have no liability whatsoever arising from any errors or discrepancies between the above listed information and actual documents.