

RAVENEL COMMERCE CENTER
6398 SAVANNAH HIGHWAY, RAVENEL, SC 29470
1,070-3,440 SF | \$12.00/SF/YR NNN



 **LEE &
ASSOCIATES**
COMMERCIAL REAL ESTATE SERVICES

PRESENTED BY:

Clarke Attaway
843.793.6957
CAttaway@Lee-Associates.com

PRESENTED BY:

Ryan Welch, SIOR
843.747.5856
RWelch@Lee-Associates.com



OFFERING SUMMARY

Address:	6398 Savannah Highway
City, State, Zip:	Ravenel, SC 29470
TMS#:	186-00-00-166
Zoning:	General Business
Space Available SF:	1,070 - 3,440 SF
Rate:	\$12.00/SF/YR NNN
Building Size:	7,040 SF

PROPERTY OVERVIEW

Well maintained multi-tenant commercial facility with multiple configurations available ranging from 1,070 SF up to 3,440 SF. The facility was constructed in 2011 and much of the space is in warm vanilla box condition ready to be built out. Landlord improvement allowance is negotiable. The site provides easy access, great visibility with 210' of frontage on Savannah Highway and ample on-site parking. Located approximately 10 miles south of Charleston in the heart of Ravenel.

LOCATION OVERVIEW

0.4 miles south of Highway 165 on Savannah Highway on the right just past Ravenel Trucking. Look for the Lee & Associates sign.

GENERAL COMMERCIAL FOR LEASE RAVENEL COMMERCE CENTER

6398 Savannah Highway, Ravenel, SC 29470



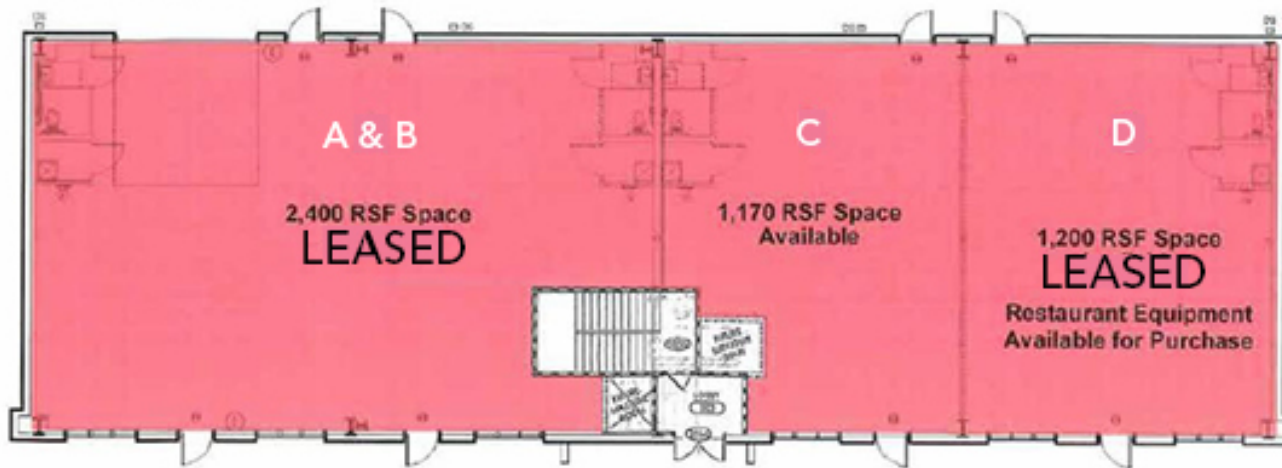
SPACE	LEASE RATE	LEASE TYPE	SIZE (SF)	AVAILABILITY
Suite C	\$12.00 SF/YR	NNN	1,170 SF	Immediate
Suite E	\$12.00 SF/YR	NNN	1,070 SF	Immediate
Suite F	\$12.00 SF/YR	NNN	1,200 SF	Immediate

Clarke Attaway
CAttaway@Lee-Associates.com
D 843.793.6957

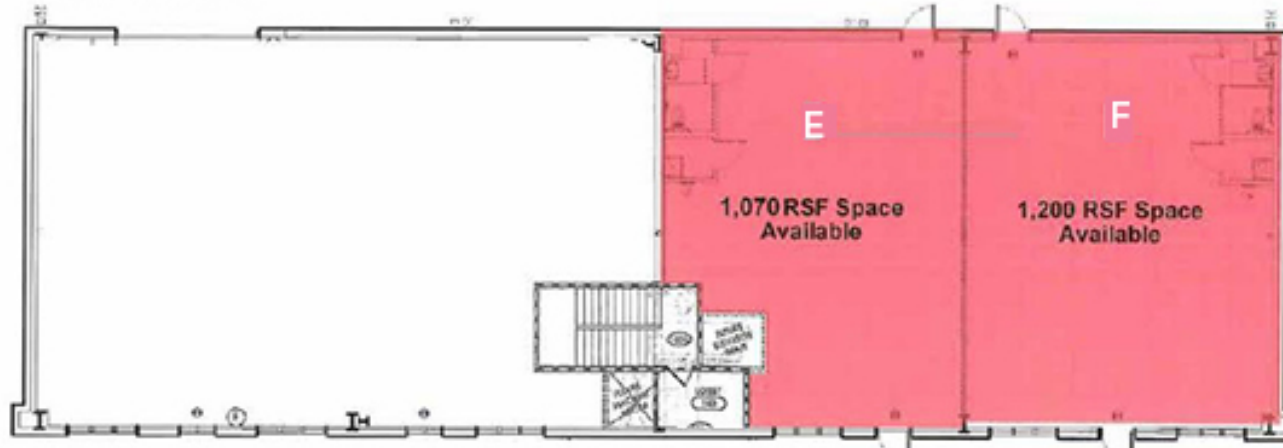
Ryan Welch, SIOR
RWelch@Lee-Associates.com
D 843.747.5856

All information furnished regarding property for sale, rental or financing is from sources deemed reliable, but no warranty or representation is made to the accuracy thereof and same is submitted to errors, omissions, change of price, rental or other conditions prior to sale, lease or financing or withdrawal without notice. No liability of any kind is to be imposed on the broker herein.

1ST FLOOR



2ND FLOOR





LOCATION AERIAL



ADDITIONAL PHOTOS



