



**160 E GRAND**

**Ground Floor | 4,841 SF**

**Retail/Restaurant/Medical Space For Lease**





ground floor

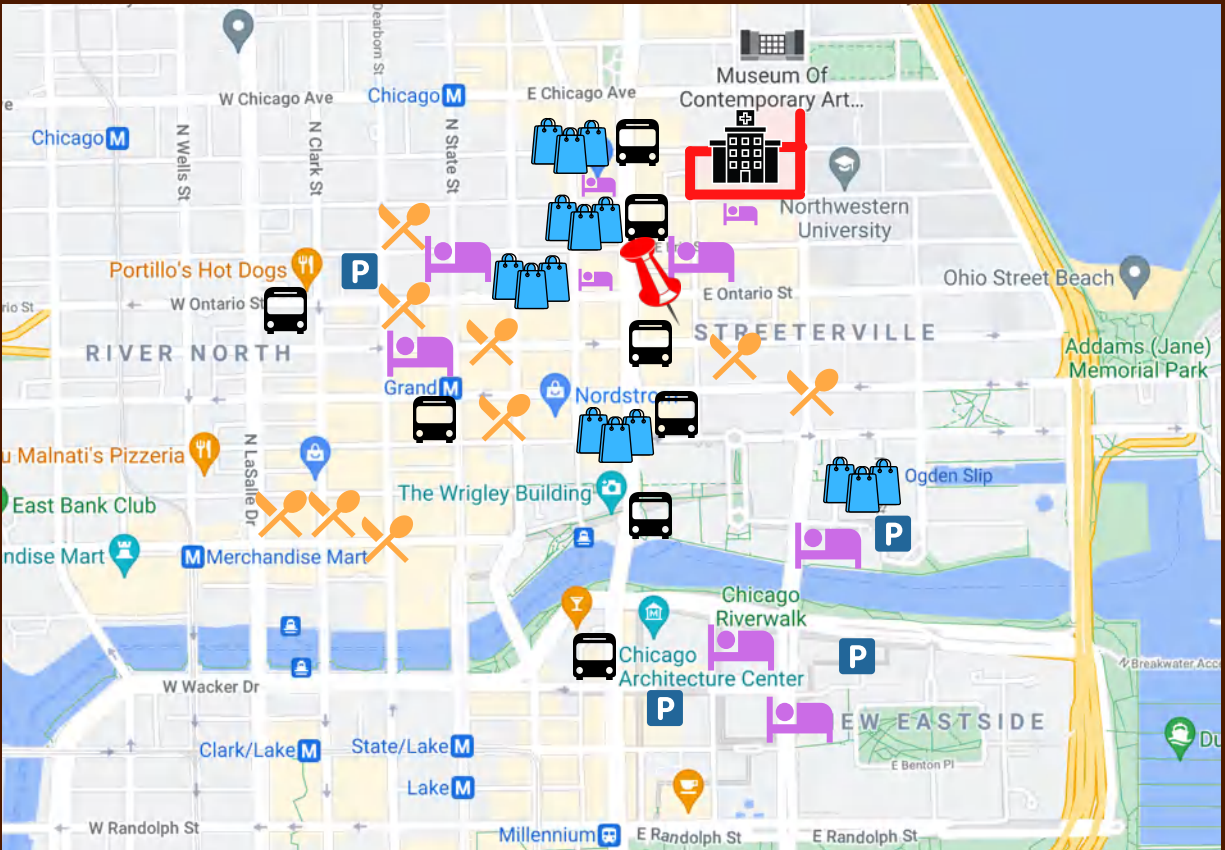
entrance



WALKWAY

ENTRANCE BELOW WALKWAY OFF MICHIGAN AVE

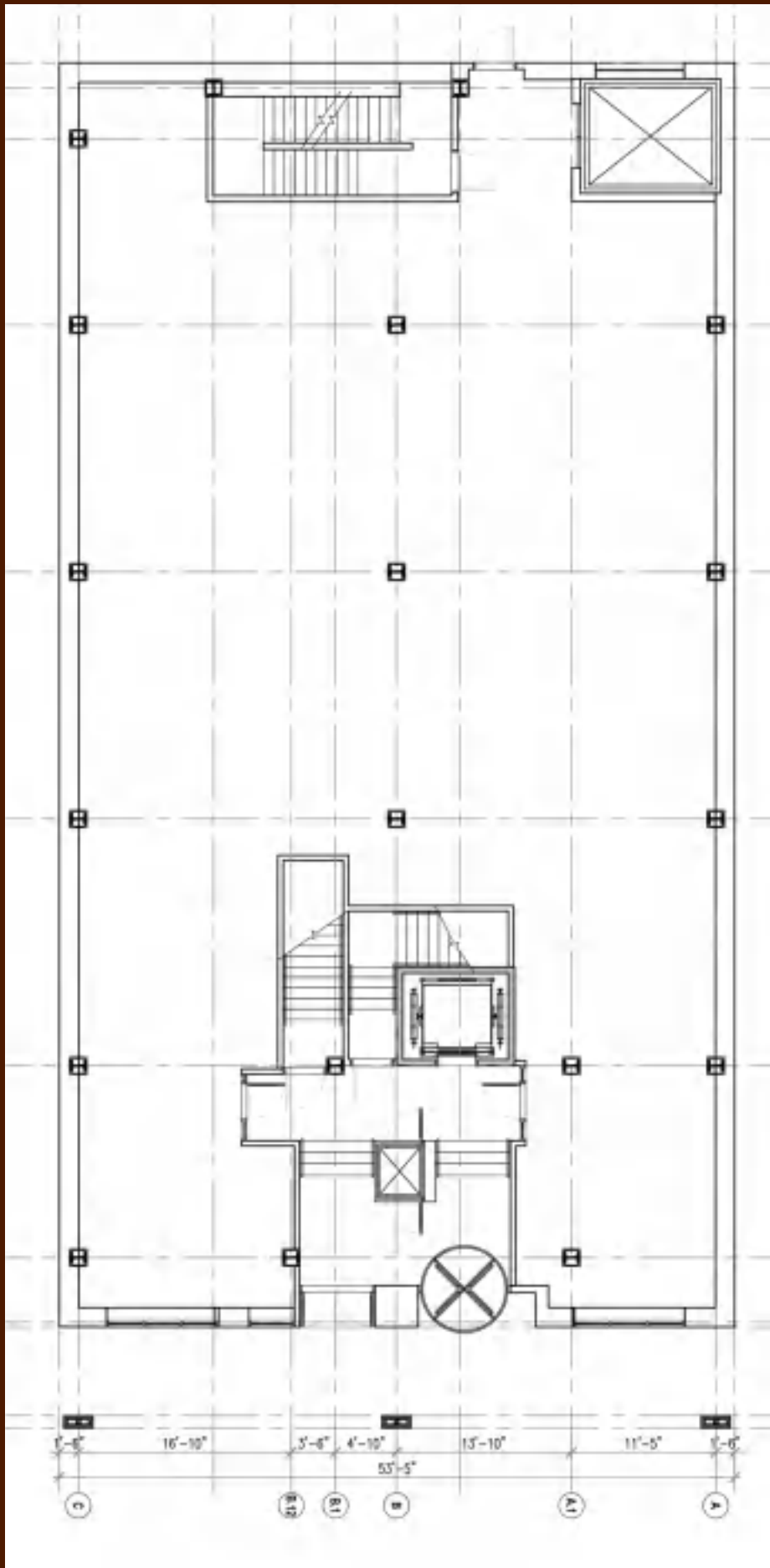




## WITHIN HALF A MILE

- Northwestern Memorial Hospital and UChicago Medicine River East
- Multiple hotels, including AC Hotel, Loews Chicago, and the Intercontinental
- Michigan Avenue shopping and dining
- Multiple bus and train lines
- Public parking garage located directly next to the space

Population (1M)	119,096
Households (1M)	73,091
Avg Income (1M)	\$148,648
Top Spending	Takeout (\$3m +)
VPD	17,067
WalkScore	98
Ridescore	100



**JONATHAN  
ZIMMERMAN**

312.263.8787

jzimmerman@  
WillardJones.com

**WillardJones.com**

