



Regions Tower

333 TEXAS STREET, SHREVEPORT, LA 71101
OFFICE SPACE FOR LEASE

Regions Tower is part of Regions Center which is located in the heart of downtown Shreveport. Regions Center is undoubtedly the most prestigious office complex in North Louisiana. Tenants and their guests enjoy many amenities, some of which include:

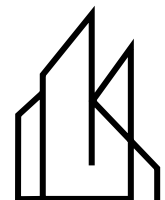
- On-site Security Personnel
- Additional Conference Rooms
- Break Room with Vending Machines
- Fitness Center
- Regions Center Atrium and it's 50' waterfall
- Wheelless Conference Center
- Nader's Art Gallery
- Bistro To Go
- On-site Management & Leasing
- Daily Janitorial Service
- Fed Ex, UPS & USPS
- Attached Parking Garage

For Additional Information, Contact:

**Beth King | 318-453-6066 | beth@bethkingrealestate.com
333 Texas Street, Suite 2280, Shreveport, Louisiana 71101**

ALL INFORMATION CONTAINED HEREIN IS BELIEVED TO BE ACCURATE, BUT IS NOT WARRANTED AND NO LIABILITY OF ERRORS OR OMISSIONS IS ASSURED BY EITHER THE PROPERTY OWNER OR BETH KING REAL ESTATE, LLC OR ITS AGENTS AND EMPLOYEES. PRICES AS STATED HEREIN AND PRODUCT AVAILABILITY IS SUBJECT TO CHANGE AND/OR SALE OR LEASE WITHOUT PRIOR NOTICE, AND ALL SIZES AND DIMENSIONS ARE SUBJECT TO CORRECTION. 01/2024

p1

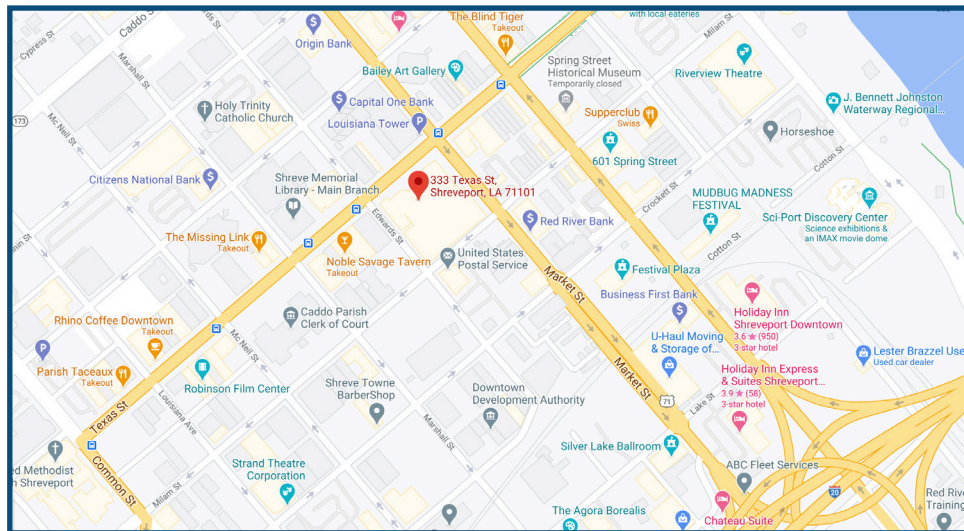


BETHKING
REAL ESTATE, LLC



Regions Tower

333 TEXAS STREET, SHREVEPORT, LA 71101
OFFICE SPACE FOR LEASE



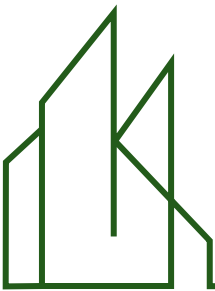
For Additional Information, Contact:

Beth King | 318-453-6066 | beth@bethkingrealestate.com
333 Texas Street, Suite 2280, Shreveport, Louisiana 71101

ALL INFORMATION CONTAINED HEREIN IS BELIEVED TO BE ACCURATE, BUT IS NOT WARRANTED AND NO LIABILITY OF ERRORS OR OMISSIONS IS ASSURED BY EITHER THE PROPERTY OWNER OR BETH KING REAL ESTATE, LLC OR ITS AGENTS AND EMPLOYEES. PRICES AS STATED HEREIN AND PRODUCT AVAILABILITY IS SUBJECT TO CHANGE AND/OR SALE OR LEASE WITHOUT PRIOR NOTICE, AND ALL SIZES AND DIMENSIONS ARE SUBJECT TO CORRECTION. 01/2024

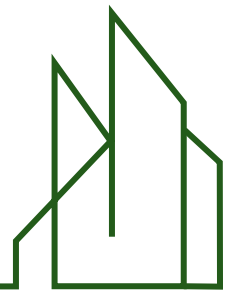
p2





Regions Tower

333 TEXAS STREET, SHREVEPORT, LA 71101
OFFICE SPACE FOR LEASE

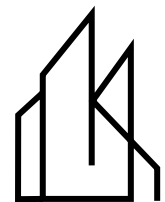


For Additional Information, Contact:

Beth King | 318-453-6066 | beth@bethkingrealestate.com
333 Texas Street, Suite 2280, Shreveport, Louisiana 71101

ALL INFORMATION CONTAINED HEREIN IS BELIEVED TO BE ACCURATE, BUT IS NOT WARRANTED AND NO LIABILITY OF ERRORS OR OMISSIONS IS ASSURED BY EITHER THE PROPERTY OWNER OR BETH KING REAL ESTATE, LLC OR ITS AGENTS AND EMPLOYEES. PRICES AS STATED HEREIN AND PRODUCT AVAILABILITY IS SUBJECT TO CHANGE AND/OR SALE OR LEASE WITHOUT PRIOR NOTICE, AND ALL SIZES AND DIMENSIONS ARE SUBJECT TO CORRECTION. 01/2024

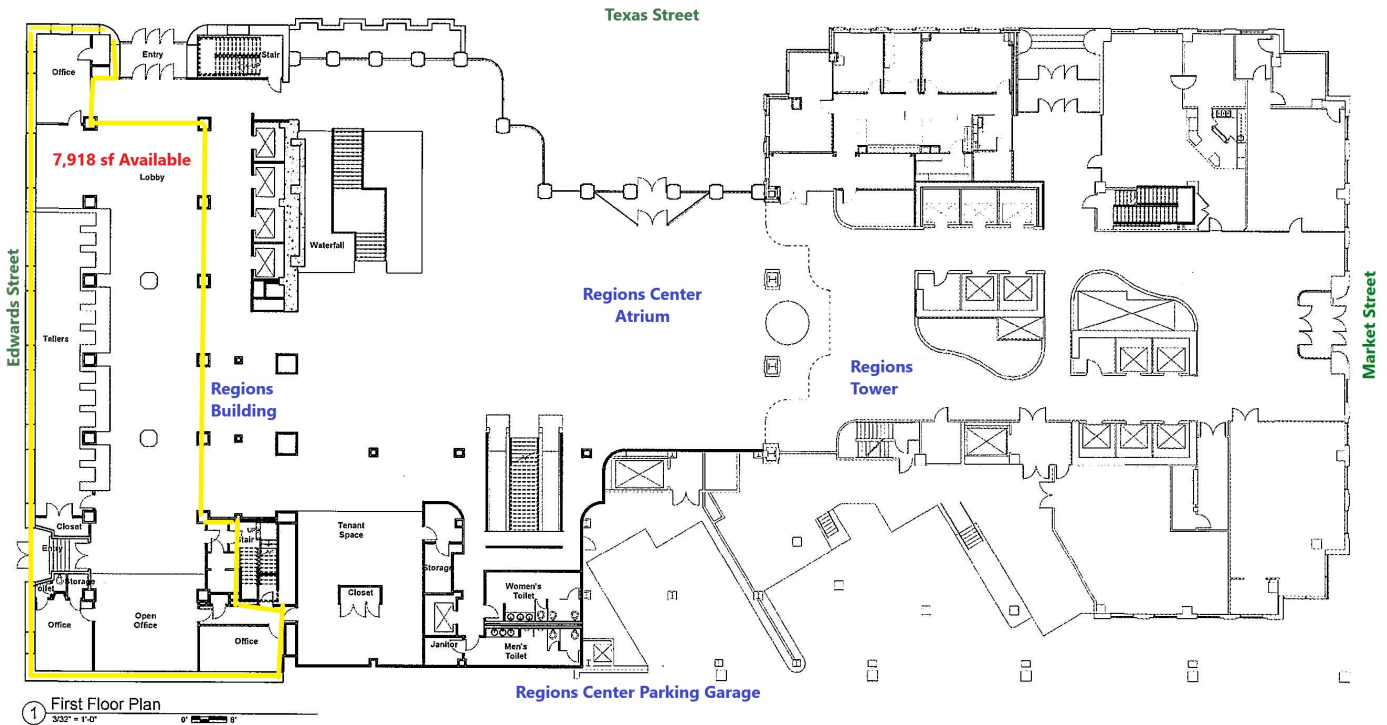
p3



BETHKING
REAL ESTATE, LLC

Regions Tower

333 TEXAS STREET, SHREVEPORT, LA 71101
OFFICE SPACE FOR LEASE



For Additional Information, Contact:

Beth King | 318-453-6066 | beth@bethkingrealestate.com
333 Texas Street, Suite 2280, Shreveport, Louisiana 71101

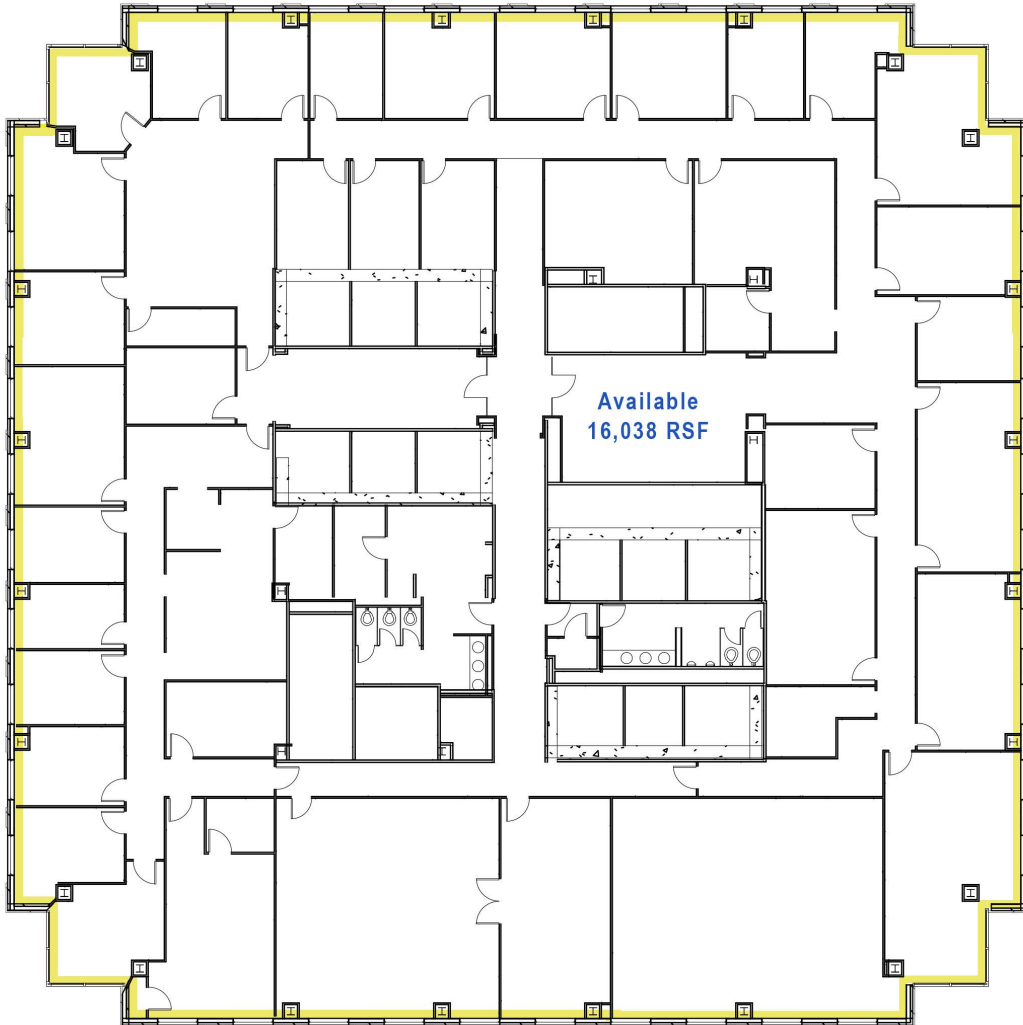
ALL INFORMATION CONTAINED HEREIN IS BELIEVED TO BE ACCURATE, BUT IS NOT WARRANTED AND NO LIABILITY OF ERRORS OR OMISSIONS IS ASSURED BY EITHER THE PROPERTY OWNER OR BETH KING REAL ESTATE, LLC OR ITS AGENTS AND EMPLOYEES. PRICES AS STATED HEREIN AND PRODUCT AVAILABILITY IS SUBJECT TO CHANGE AND/OR SALE OR LEASE WITHOUT PRIOR NOTICE, AND ALL SIZES AND DIMENSIONS ARE SUBJECT TO CORRECTION. 01/2024

p4



Regions Tower

333 TEXAS STREET, SHREVEPORT, LA 71101
OFFICE SPACE FOR LEASE

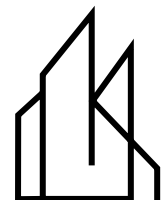


For Additional Information, Contact:

Beth King | 318-453-6066 | beth@bethkingrealestate.com
333 Texas Street, Suite 2280, Shreveport, Louisiana 71101

p5

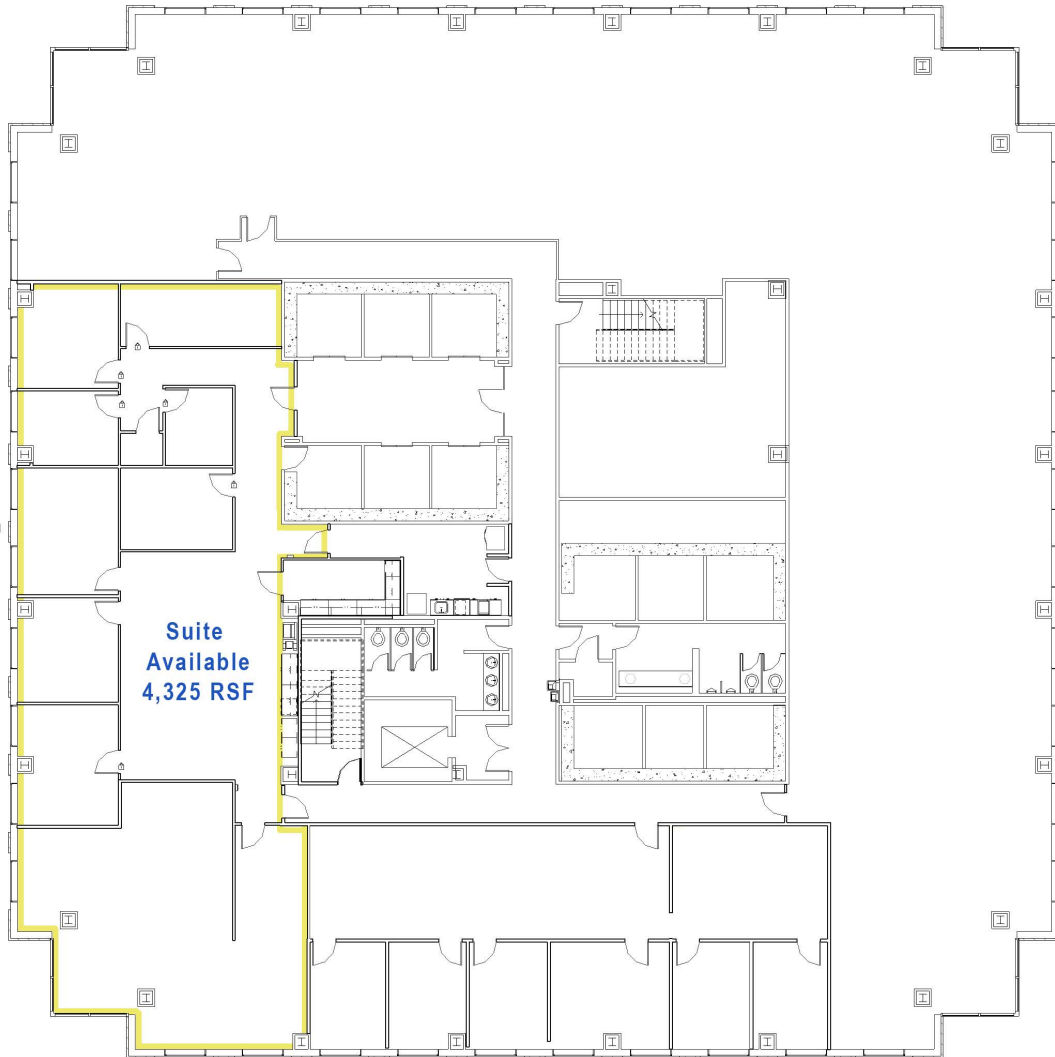
ALL INFORMATION CONTAINED HEREIN IS BELIEVED TO BE ACCURATE, BUT IS NOT WARRANTED AND NO LIABILITY OF ERRORS OR OMISSIONS IS ASSURED BY EITHER THE PROPERTY OWNER OR BETH KING REAL ESTATE, LLC OR ITS AGENTS AND EMPLOYEES. PRICES AS STATED HEREIN AND PRODUCT AVAILABILITY IS SUBJECT TO CHANGE AND/OR SALE OR LEASE WITHOUT PRIOR NOTICE, AND ALL SIZES AND DIMENSIONS ARE SUBJECT TO CORRECTION. 01/2024



BETHKING
REAL ESTATE, LLC

Regions Tower

333 TEXAS STREET, SHREVEPORT, LA 71101
OFFICE SPACE FOR LEASE



For Additional Information, Contact:

Beth King | 318-453-6066 | beth@bethkingrealestate.com
333 Texas Street, Suite 2280, Shreveport, Louisiana 71101

p6

ALL INFORMATION CONTAINED HEREIN IS BELIEVED TO BE ACCURATE, BUT IS NOT WARRANTED AND NO LIABILITY OF ERRORS OR OMISSIONS IS ASSURED BY EITHER THE PROPERTY OWNER OR BETH KING REAL ESTATE, LLC OR ITS AGENTS AND EMPLOYEES. PRICES AS STATED HEREIN AND PRODUCT AVAILABILITY IS SUBJECT TO CHANGE AND/OR SALE OR LEASE WITHOUT PRIOR NOTICE, AND ALL SIZES AND DIMENSIONS ARE SUBJECT TO CORRECTION. 01/2024

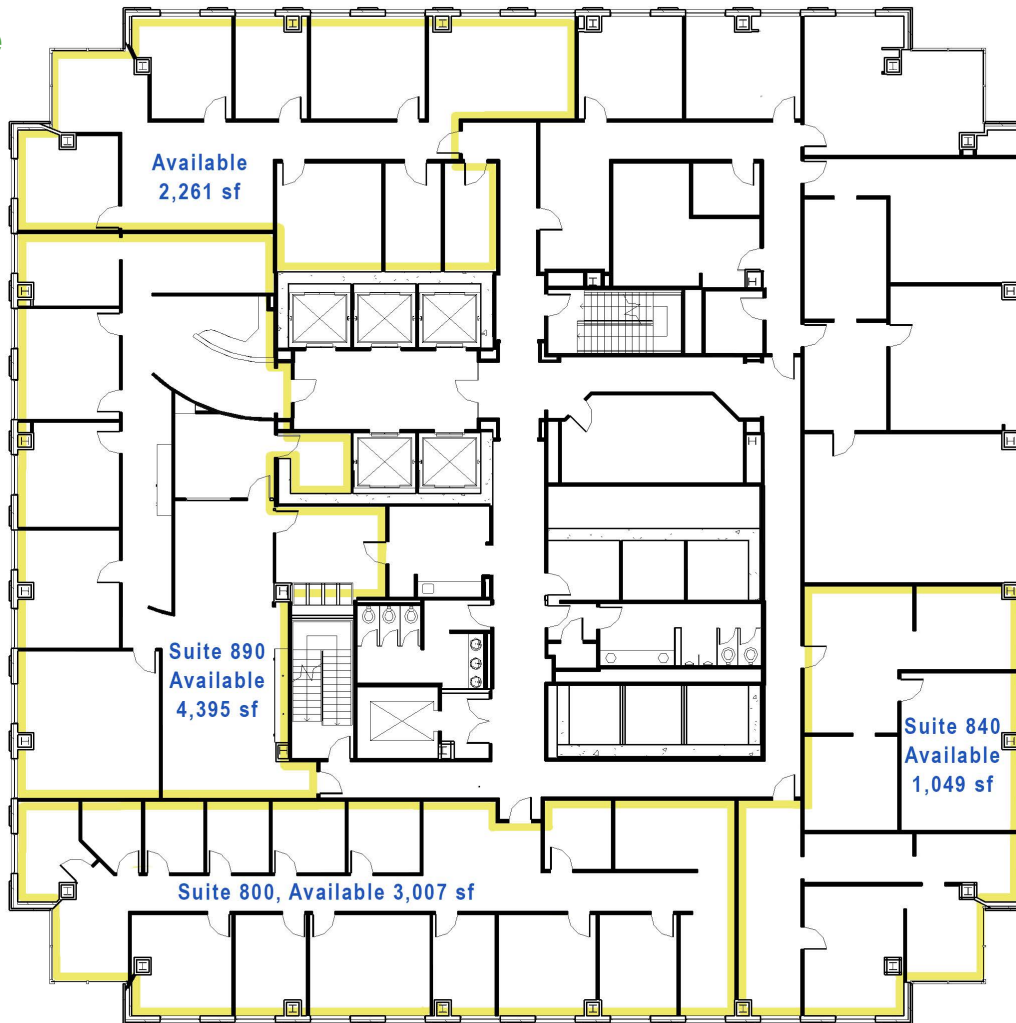


Regions Tower

333 TEXAS STREET, SHREVEPORT, LA 71101
OFFICE SPACE FOR LEASE



10,712 Total
SF Available



For Additional Information, Contact:

Beth King | 318-453-6066 | beth@bethkingrealestate.com
333 Texas Street, Suite 2280, Shreveport, Louisiana 71101

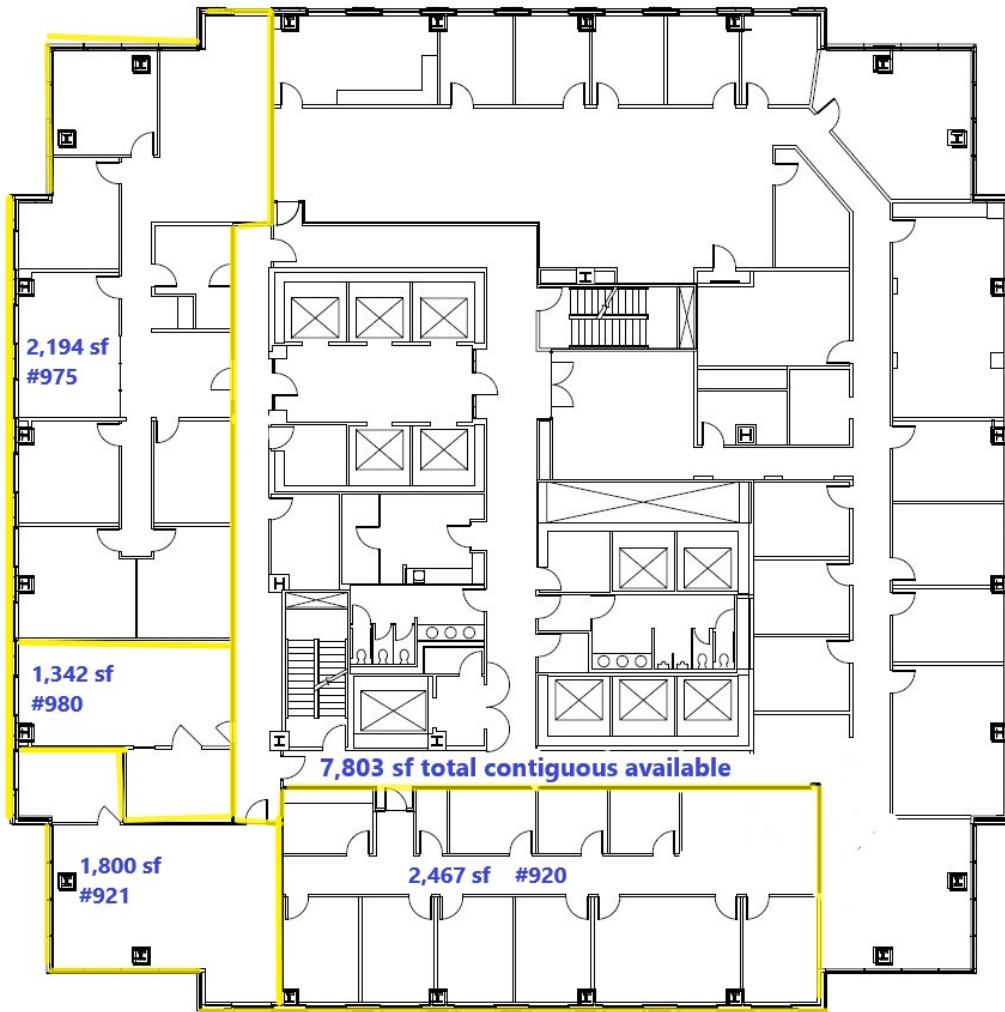
p7

ALL INFORMATION CONTAINED HEREIN IS BELIEVED TO BE ACCURATE, BUT IS NOT WARRANTED AND NO LIABILITY OF ERRORS OR OMISSIONS IS ASSURED BY EITHER THE PROPERTY OWNER OR BETH KING REAL ESTATE, LLC OR ITS AGENTS AND EMPLOYEES. PRICES AS STATED HEREIN AND PRODUCT AVAILABILITY IS SUBJECT TO CHANGE AND/OR SALE OR LEASE WITHOUT PRIOR NOTICE, AND ALL SIZES AND DIMENSIONS ARE SUBJECT TO CORRECTION. 01/2024



Regions Tower

333 TEXAS STREET, SHREVEPORT, LA 71101
OFFICE SPACE FOR LEASE

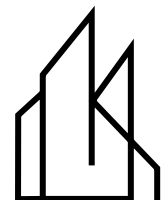


For Additional Information, Contact:

Beth King | 318-453-6066 | beth@bethkingrealestate.com
333 Texas Street, Suite 2280, Shreveport, Louisiana 71101

p8

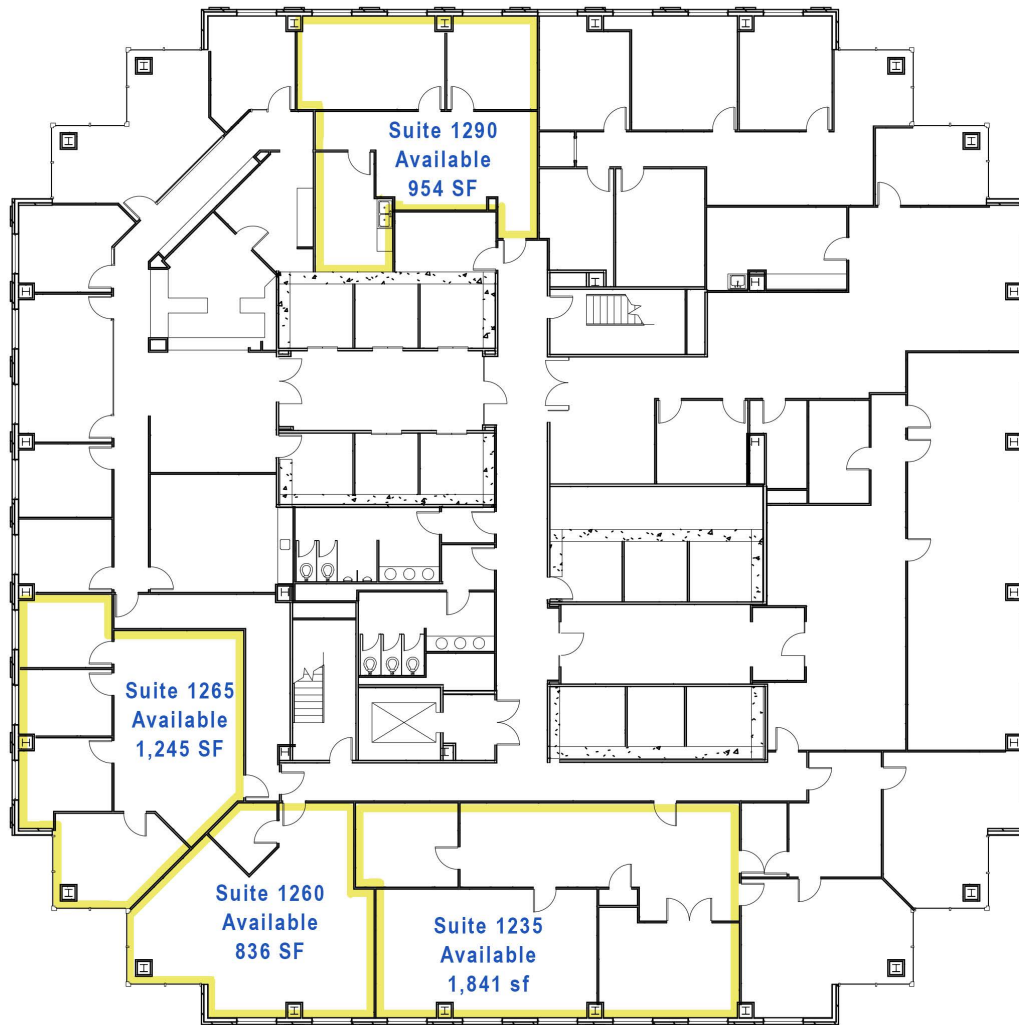
ALL INFORMATION CONTAINED HEREIN IS BELIEVED TO BE ACCURATE, BUT IS NOT WARRANTED AND NO LIABILITY OF ERRORS OR OMISSIONS IS ASSURED BY EITHER THE PROPERTY OWNER OR BETH KING REAL ESTATE, LLC OR ITS AGENTS AND EMPLOYEES. PRICES AS STATED HEREIN AND PRODUCT AVAILABILITY IS SUBJECT TO CHANGE AND/OR SALE OR LEASE WITHOUT PRIOR NOTICE, AND ALL SIZES AND DIMENSIONS ARE SUBJECT TO CORRECTION. 01/2024



BETHKING
REAL ESTATE, LLC

Regions Tower

333 TEXAS STREET, SHREVEPORT, LA 71101
OFFICE SPACE FOR LEASE

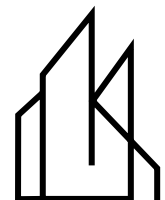


For Additional Information, Contact:

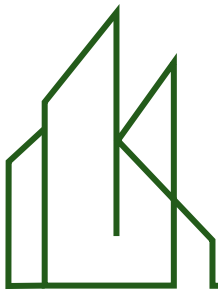
Beth King | 318-453-6066 | beth@bethkingrealestate.com
333 Texas Street, Suite 2280, Shreveport, Louisiana 71101

p9

ALL INFORMATION CONTAINED HEREIN IS BELIEVED TO BE ACCURATE, BUT IS NOT WARRANTED AND NO LIABILITY OF ERRORS OR OMISSIONS IS ASSURED BY EITHER THE PROPERTY OWNER OR BETH KING REAL ESTATE, LLC OR ITS AGENTS AND EMPLOYEES. PRICES AS STATED HEREIN AND PRODUCT AVAILABILITY IS SUBJECT TO CHANGE AND/OR SALE OR LEASE WITHOUT PRIOR NOTICE, AND ALL SIZES AND DIMENSIONS ARE SUBJECT TO CORRECTION. 01/2024

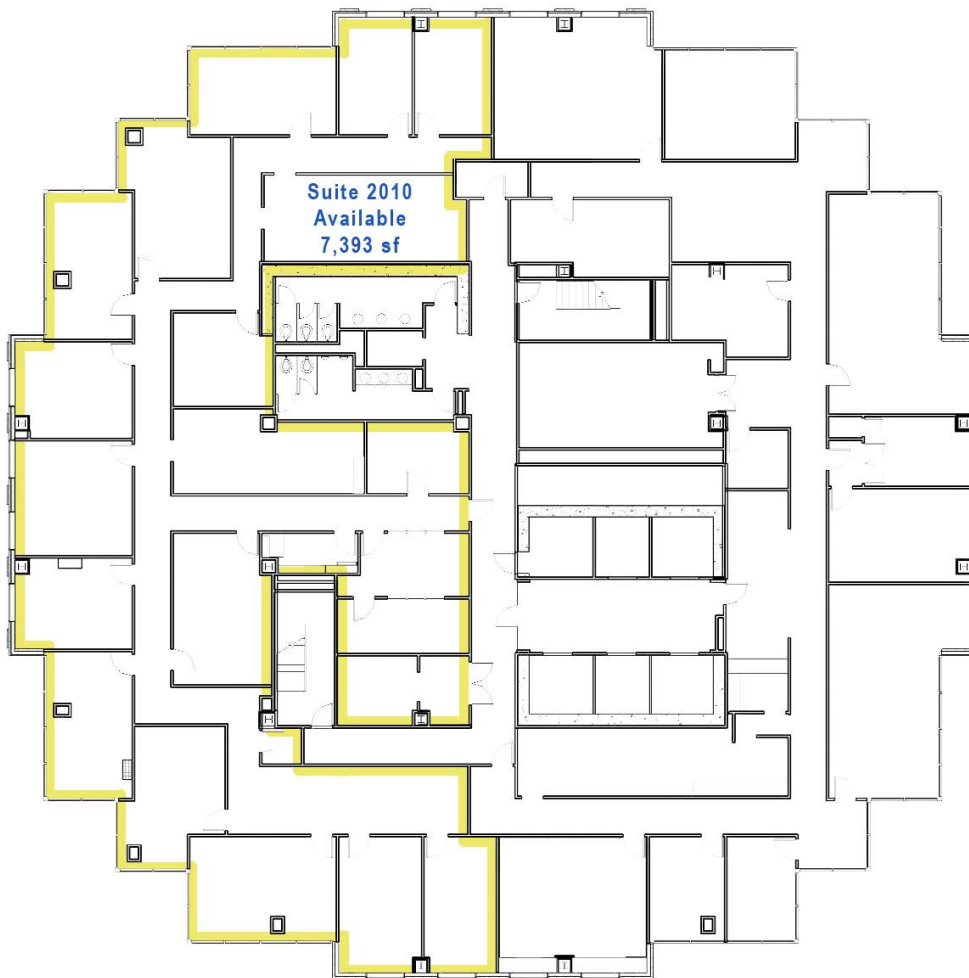
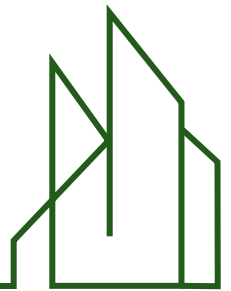


BETHKING
REAL ESTATE, LLC



Regions Tower

333 TEXAS STREET, SHREVEPORT, LA 71101
OFFICE SPACE FOR LEASE

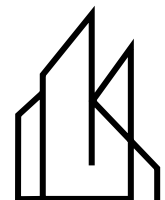


For Additional Information, Contact:

**Beth King | 318-453-6066 | beth@bethkingrealestate.com
333 Texas Street, Suite 2280, Shreveport, Louisiana 71101**

p10

ALL INFORMATION CONTAINED HEREIN IS BELIEVED TO BE ACCURATE, BUT IS NOT WARRANTED AND NO LIABILITY OF ERRORS OR OMISSIONS IS ASSURED BY EITHER THE PROPERTY OWNER OR BETH KING REAL ESTATE, LLC OR ITS AGENTS AND EMPLOYEES. PRICES AS STATED HEREIN AND PRODUCT AVAILABILITY IS SUBJECT TO CHANGE AND/OR SALE OR LEASE WITHOUT PRIOR NOTICE, AND ALL SIZES AND DIMENSIONS ARE SUBJECT TO CORRECTION. 01/2024



BETHKING
REAL ESTATE, LLC

Regions Tower

333 TEXAS STREET, SHREVEPORT, LA 71101
OFFICE SPACE FOR LEASE

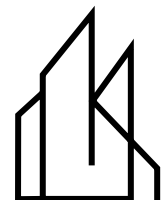


For Additional Information, Contact:

Beth King | 318-453-6066 | beth@bethkingrealestate.com
333 Texas Street, Suite 2280, Shreveport, Louisiana 71101

p11

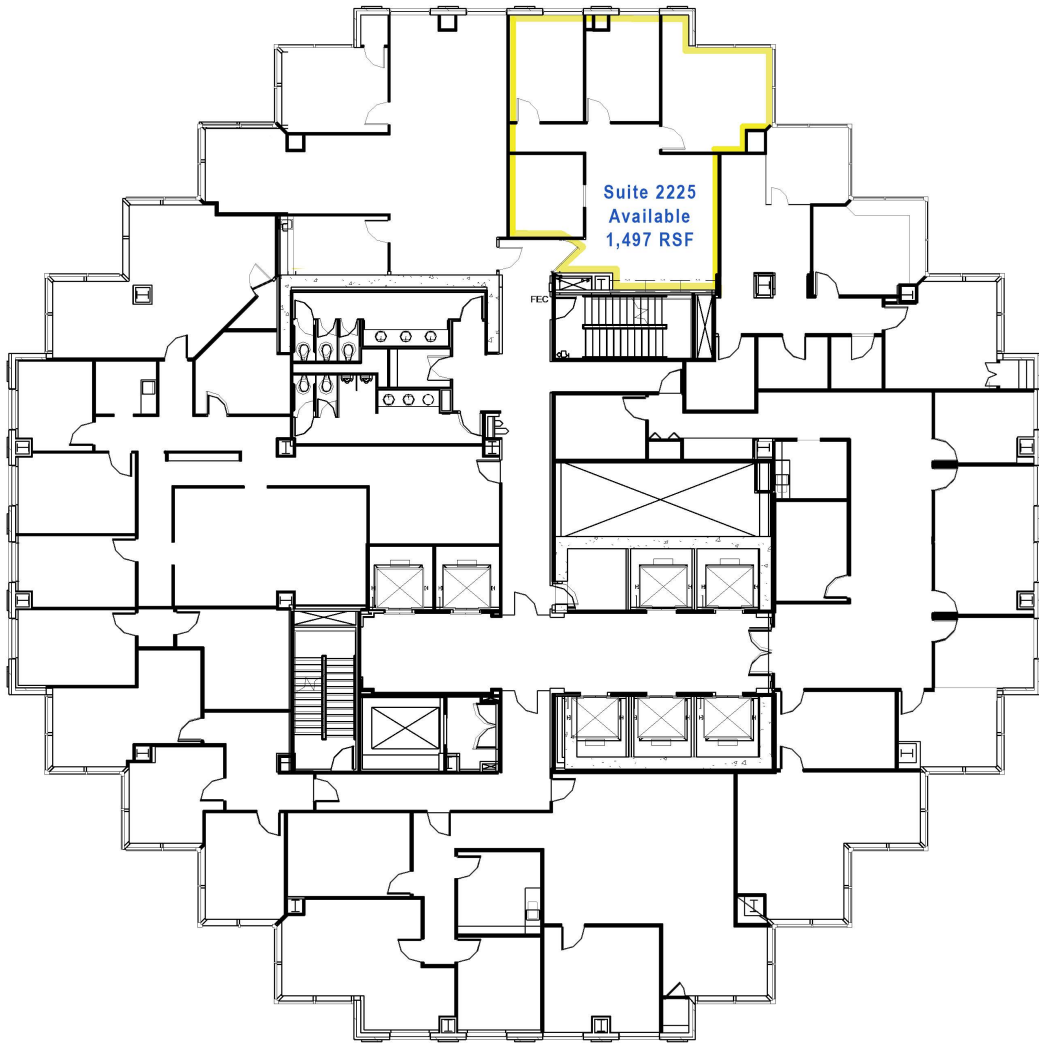
ALL INFORMATION CONTAINED HEREIN IS BELIEVED TO BE ACCURATE, BUT IS NOT WARRANTED AND NO LIABILITY OF ERRORS OR OMISSIONS IS ASSURED BY EITHER THE PROPERTY OWNER OR BETH KING REAL ESTATE, LLC OR ITS AGENTS AND EMPLOYEES. PRICES AS STATED HEREIN AND PRODUCT AVAILABILITY IS SUBJECT TO CHANGE AND/OR SALE OR LEASE WITHOUT PRIOR NOTICE, AND ALL SIZES AND DIMENSIONS ARE SUBJECT TO CORRECTION. 01/2024



BETHKING
REAL ESTATE, LLC

Regions Tower

333 TEXAS STREET, SHREVEPORT, LA 71101
OFFICE SPACE FOR LEASE

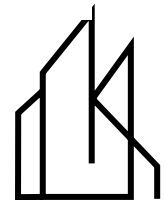


For Additional Information, Contact:

**Beth King | 318-453-6066 | beth@bethkingrealestate.com
333 Texas Street, Suite 2280, Shreveport, Louisiana 71101**

p12

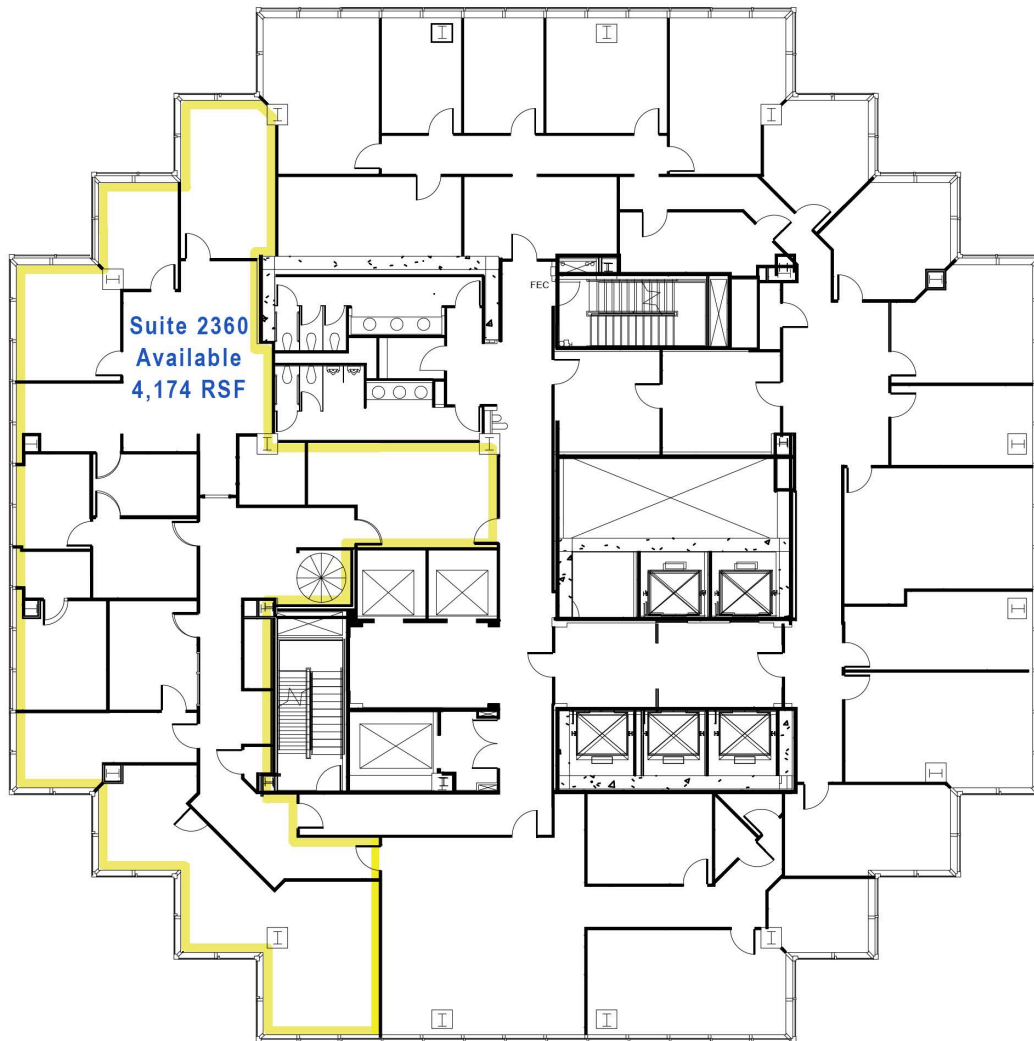
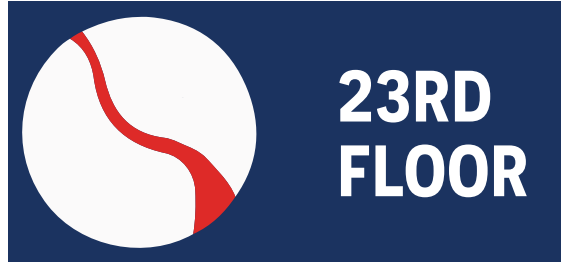
ALL INFORMATION CONTAINED HEREIN IS BELIEVED TO BE ACCURATE, BUT IS NOT WARRANTED AND NO LIABILITY OF ERRORS OR OMISSIONS IS ASSURED BY EITHER THE PROPERTY OWNER OR BETH KING REAL ESTATE, LLC OR ITS AGENTS AND EMPLOYEES. PRICES AS STATED HEREIN AND PRODUCT AVAILABILITY IS SUBJECT TO CHANGE AND/OR SALE OR LEASE WITHOUT PRIOR NOTICE, AND ALL SIZES AND DIMENSIONS ARE SUBJECT TO CORRECTION. 01/2024



BETHKING
REAL ESTATE, LLC

Regions Tower

333 TEXAS STREET, SHREVEPORT, LA 71101
OFFICE SPACE FOR LEASE



For Additional Information, Contact:

**Beth King | 318-453-6066 | beth@bethkingrealestate.com
333 Texas Street, Suite 2280, Shreveport, Louisiana 71101**

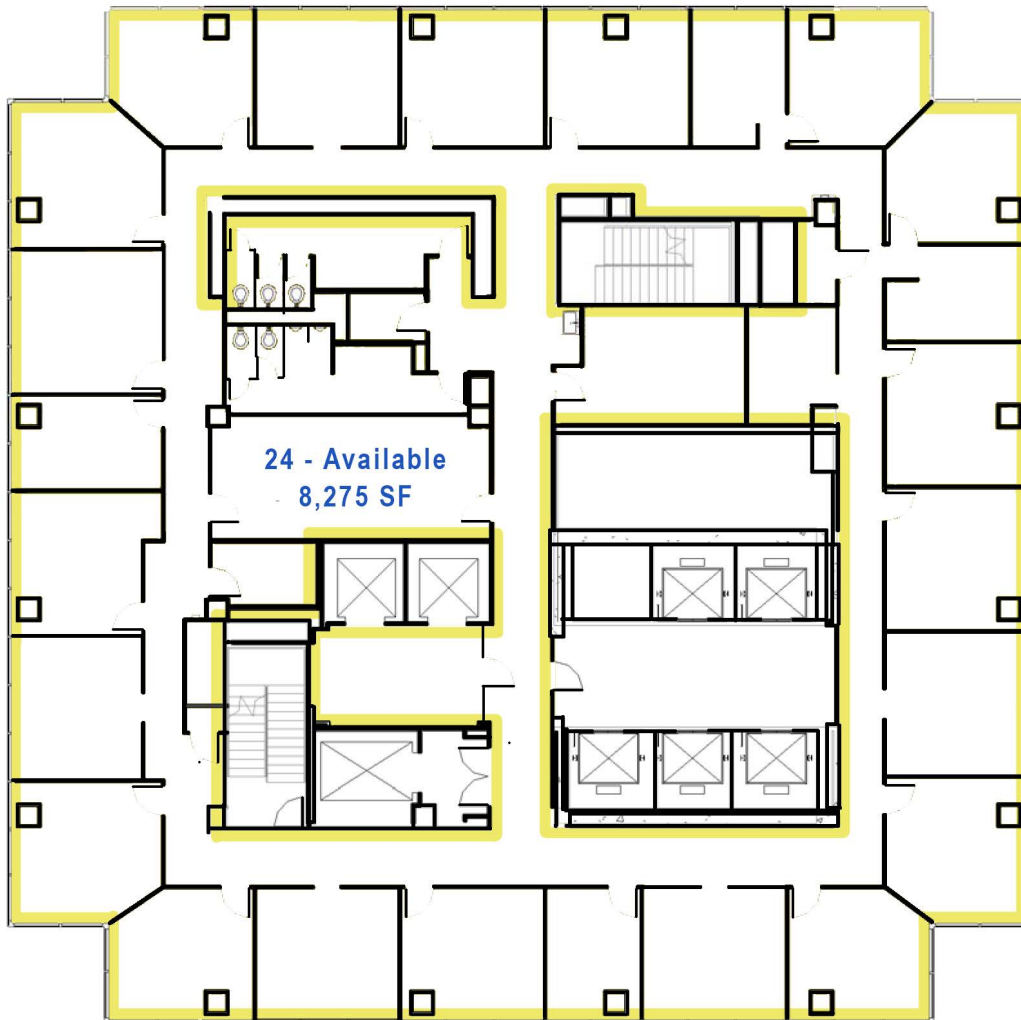
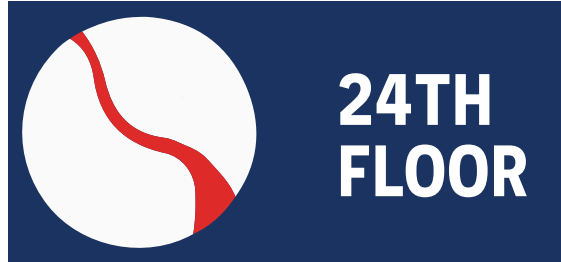
p13

ALL INFORMATION CONTAINED HEREIN IS BELIEVED TO BE ACCURATE, BUT IS NOT WARRANTED AND NO LIABILITY OF ERRORS OR OMISSIONS IS ASSURED BY EITHER THE PROPERTY OWNER OR BETH KING REAL ESTATE, LLC OR ITS AGENTS AND EMPLOYEES. PRICES AS STATED HEREIN AND PRODUCT AVAILABILITY IS SUBJECT TO CHANGE AND/OR SALE OR LEASE WITHOUT PRIOR NOTICE, AND ALL SIZES AND DIMENSIONS ARE SUBJECT TO CORRECTION. 01/2024



Regions Tower

333 TEXAS STREET, SHREVEPORT, LA 71101
OFFICE SPACE FOR LEASE

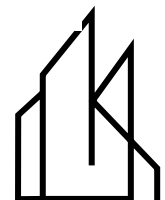


For Additional Information, Contact:

Beth King | 318-453-6066 | beth@bethkingrealestate.com
333 Texas Street, Suite 2280, Shreveport, Louisiana 71101

p14

ALL INFORMATION CONTAINED HEREIN IS BELIEVED TO BE ACCURATE, BUT IS NOT WARRANTED AND NO LIABILITY OF ERRORS OR OMISSIONS IS ASSURED BY EITHER THE PROPERTY OWNER OR BETH KING REAL ESTATE, LLC OR ITS AGENTS AND EMPLOYEES. PRICES AS STATED HEREIN AND PRODUCT AVAILABILITY IS SUBJECT TO CHANGE AND/OR SALE OR LEASE WITHOUT PRIOR NOTICE, AND ALL SIZES AND DIMENSIONS ARE SUBJECT TO CORRECTION. 01/2024



BETHKING
REAL ESTATE, LLC