

DESERT SKY PALMS

7502-7710 W THOMAS ROAD, PHOENIX, ARIZONA



DRIVE-THRU PAD AVAILABLE



MAJOR TENANTS:



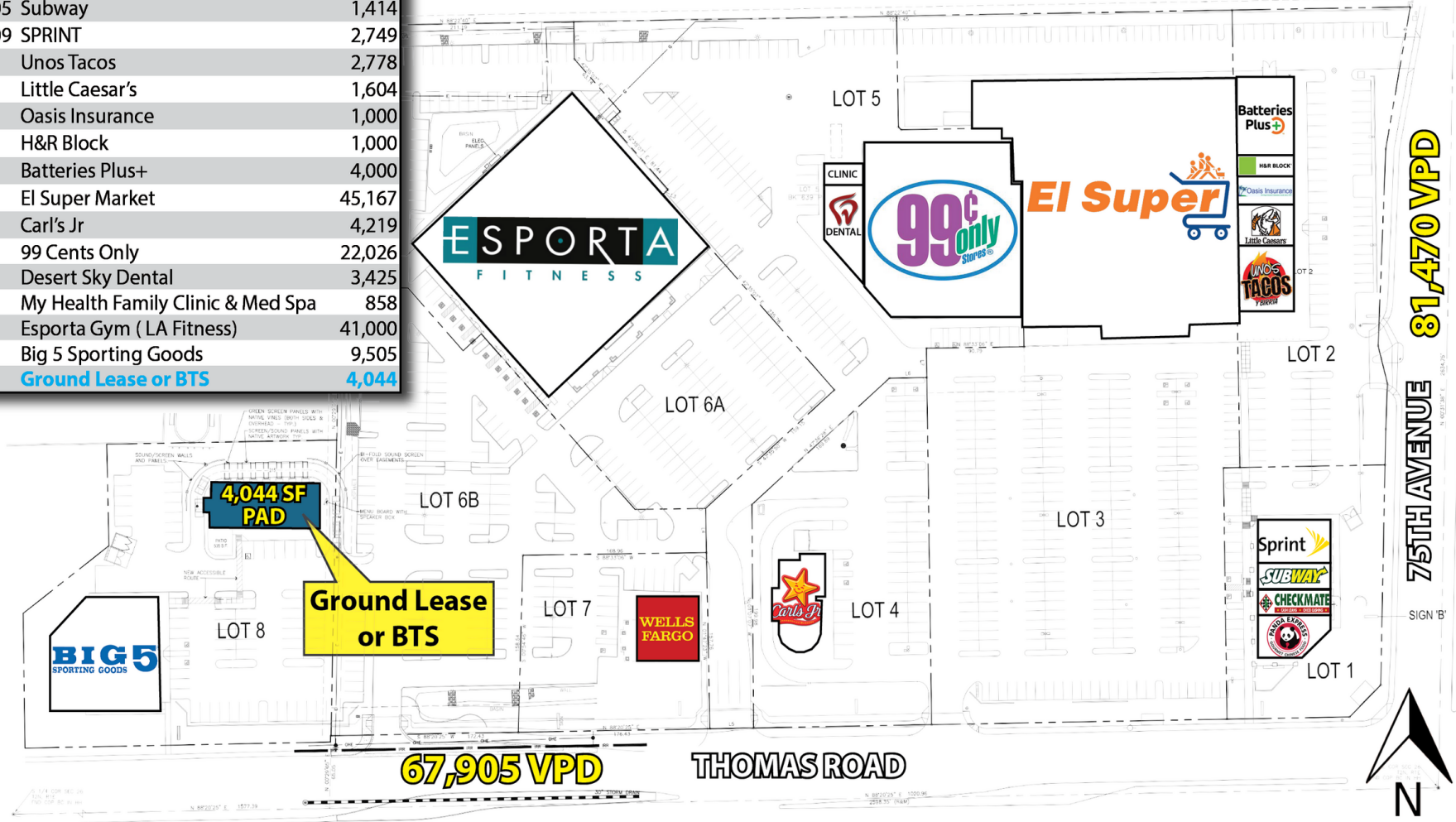
NATALIE JAAFAR
602.386.5710
njaafar@camcre.com

2701 E. CAMELBACK RD., SUITE #170, PHOENIX, AZ 85016 | 602.489.7990 | WWW.CAMCRE.COM



SITE PLAN

Suite	Tenant	SF
1-100/101	Panda Express	2,000
1-102/103	Checkmate	1,415
1-104/105	Subway	1,414
1-106/109	SPRINT	2,749
2-1/2	Unos Tacos	2,778
2-3/4	Little Caesar's	1,604
2-5	Oasis Insurance	1,000
2-6	H&R Block	1,000
2-7/9	Batteries Plus+	4,000
3-10	El Super Market	45,167
4-1	Carl's Jr	4,219
5-1	99 Cents Only	22,026
5-2	Desert Sky Dental	3,425
5-3	My Health Family Clinic & Med Spa	858
6-1	Esporta Gym (LA Fitness)	41,000
8-1	Big 5 Sporting Goods	9,505
PAD	Ground Lease or BTS	4,044



9,000 + HOUSING UNITS PROJECTED WITHIN 5 MILES

#	PROJECT NAME	UNITS
1	ENCLAVE	1,500 Homes
2	Vista Diamante	200 Units
3	Duminion	540 Units
4	Zora	109 Units
5	The Bungalows	267 Units
6	Western Enclave	204 Units
7	William Lyon Homes	2,000 Units for Rent & Sale
8	Fulton Homes	581 Single Family Homes
9	Wood Residential	402 Apartments
10	Greenlight Communities	300 Units

#	PROJECT NAME	UNITS
15	Cabana	286 Apartments
16	Christopher Todd Communities	300+ Units
17	Acero at the Stadium	352 Apartments
18	Acero	458 Units

#	PROJECT NAME	UNITS
11	LENNAR	1,532 for Sale & Rental Homes
12	Liv Communities	333 Units
13	Fig Timber	450 Units
14	Greenlight Communities	500+ Apartments



DEMOGRAPHICS



POPULATION	1 MILE	3 MILES	5 MILES
Total Population	21,477	172,767	356,920
Average Age	25.2	25.5	25.9
Average Age (Male)	22.7	24.5	25.1
Average Age (Female)	28.1	26.1	26.4



AVG. HH INCOME	1 MILE	3 MILES	5 MILES
Average HH Income	\$45,103	\$50,773	\$50,680
Average House Value	\$143,563	\$163,404	\$172,881



HH UNITS	1 MILE	3 MILES	5 MILES
Total Households	5,856	45,969	100,005
# of Persons per HH	3.7	3.8	3.6



DAYTIME POPULATION	1 MILE	3 MILES	5 MILES
Total Daytime Pop	13,691	76,259	200,763
Workers	7,440	29,977	99,213
Residents	41.5	66.2	43.0



HOUSEHOLDS	1 MILE	3 MILES	5 MILES
2023 Households	6,555	51,420	115,783
2028 Households	7,283	58,027	129,835

