

o o o o

# INDUSTRIAL SPACE AVAILABLE

INCLUDES FLEX, OFFICE, & TEMPATURE CONTROLLED

Lease Rate \$5.75 PSF MG



*3601 WETUMPKA HWY  
MONTGOMERY, AL 36110*



VESSEL  
VENTURES

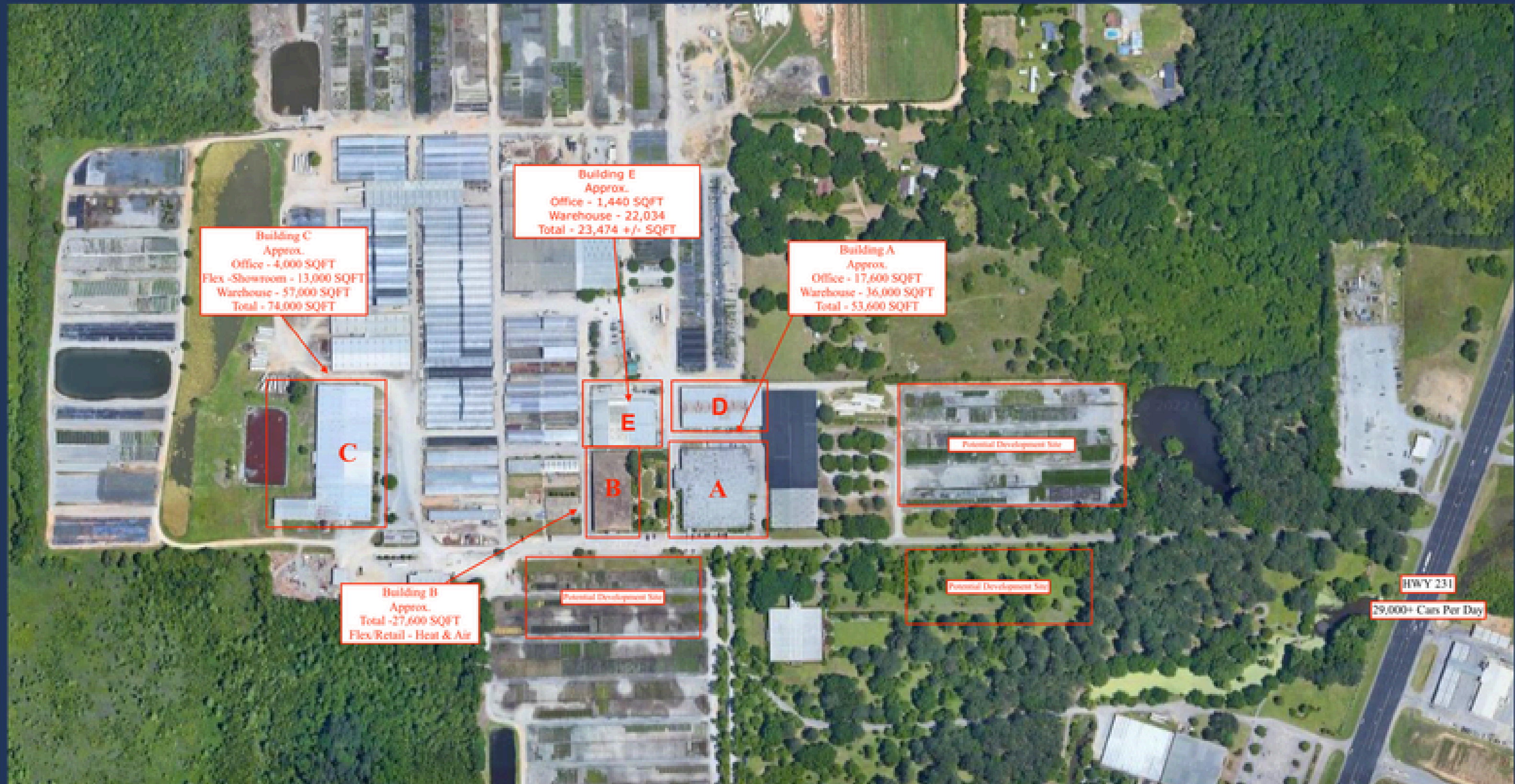
# ***COMPANY PROFILE***

**Vessel Ventures, LLC**



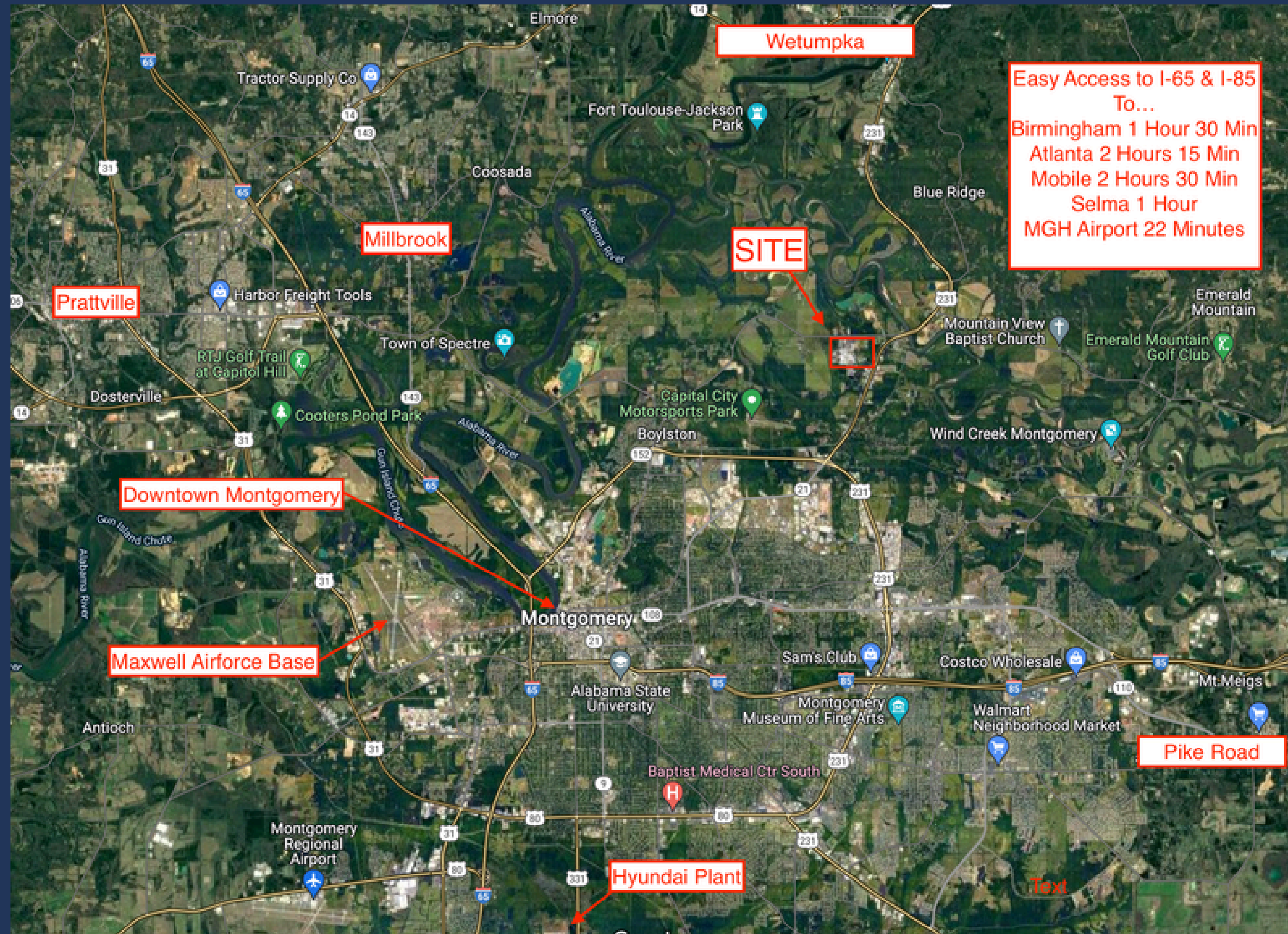
Ethan Tisdale is the founder of Vessel Ventures, LLC. As the managing director Ethan is focused on the day to day operations and services of Vessel Ventures. In addition, Ethan oversees business development utilizing his experience in facilitating real estate transactions, with over \$100M in closed transactions.

# Overview





# High Level Aerial



# Building E



## Building E

22,034 SQFT - Warehouse

1,440 SQFT - Office Space

23,474 +/- SQFT - Total

Lease Rate: \$5.75 PSF MG

-Truck Dock

-2 Drive-in Doors

-Fenced Yard with Awning



# Building E

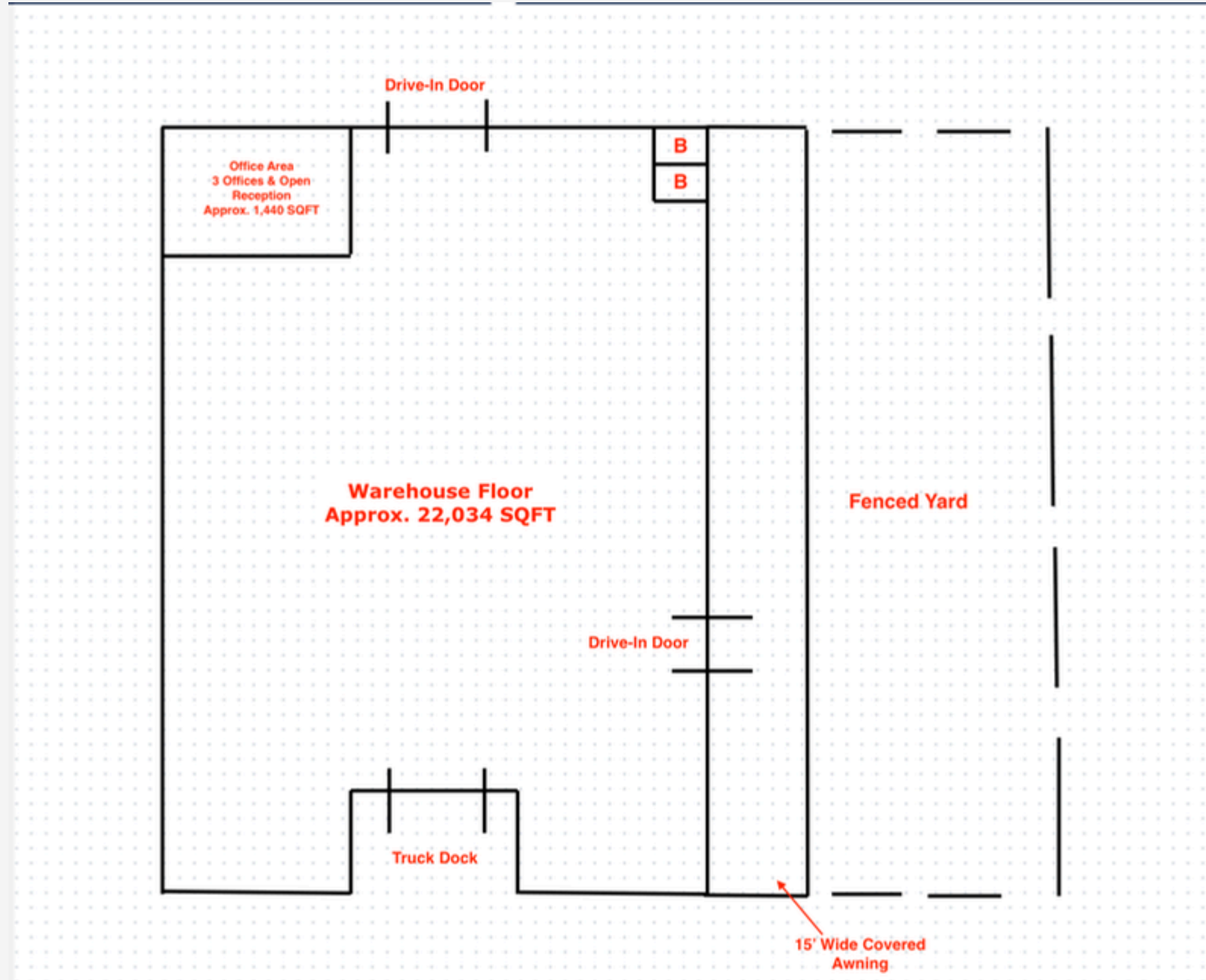




# Building E Aerial



# Building E - Floor Plan







VESSEL VENTURES

## OFFICE



4001 Carmichael Road, STE 250  
Montgomery, AL 36106



479-225-0056



[www.VesselVenturesLLC.com](http://www.VesselVenturesLLC.com)

*We look forward to working with you. Please don't  
hesitate to reach out with additional questions.*

