

2284

KALAKAUA AVE

HONOLULU, HI 96815

Prime Retail Location



CBRE

Property Information

Rare opportunity to sublease a premier retail space on coveted Kalakaua Avenue in the heart of Waikiki, which boasts a daily visitor population of 75,000+ and over 1.5 million square feet of retail and top restaurants. Footlocker is located on the Mauka side of Kalakaua Avenue, across from the Royal Hawaiian Center and Moana Surfrider, and next to the Outrigger Beachcomber Hotel. Luxury and contemporary brands from Fendi to Lululemon surround this prime location.

Highlights



Premier retail location on the world famous Kalakaua Avenue, in the center of Waikiki



Unparalleled access to customers and great visibility on one of Waikiki's most traveled walkways



Prominently positioned across from luxury stores Fendi, Jimmy Choo, Valentino, Hermes, Harry Winston and more



Next to contemporary brands like Lululemon, Ripcurl, H&M, and Sephora and luxury brands Balenciaga, Rolex, and Louis Vuitton



Proximity to the busiest restaurants on the islands, Maui Brewing Company, Duke's Waikiki and Cheesecake Factory

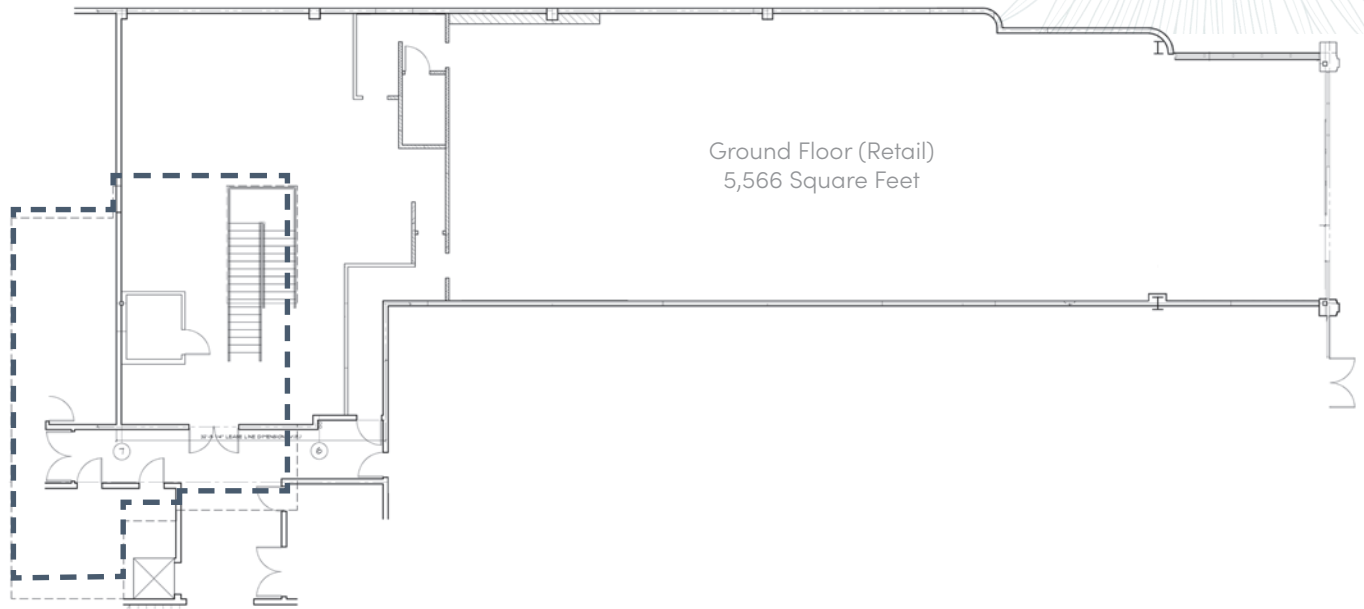
Availability

Location:	2284 Kalakaua Avenue Honolulu, HI 96815
Space Available:	Space C-130
Square Footage:	1st Fl Retail: 5,566 SF 2nd Fl Storage: 1,525 SF
Date Available:	With 3 Months Notice
Current Lease Expiration:	1/31/2027
Base Rent:	Upon Request
CAM:	\$16.78/SF Per Year
RPT:	\$15.49/SF Per Year

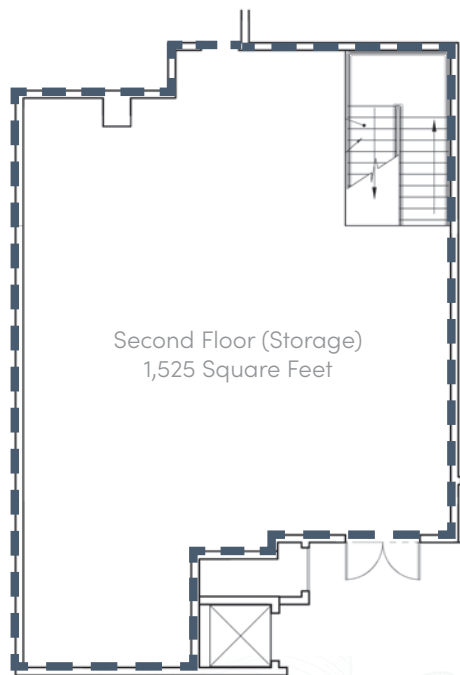


Floor Plan

First Floor



Second Floor



Local Amenities



2284 Kalakaua Ave

KUHIO AVENUE

<p>LAUULA ST</p> <p>VACANT</p> <p>HAWAII BEACHWEAR & FASHION</p> <p>DIESEL</p> <p>NATIVE HANDS</p> <p>88 TREES</p> <p>THESOPH BAR</p> <p>PRADA</p> <p>CHROME HEARTS</p> <p>MaxMara</p>	<p>LEWERS ST</p> <p>LOUIS VUITTON</p> <p>VACANT</p>	<p>ROYAL HAWAIIAN AVE</p> <p>WAIKIKI SHOPPING PLAZA</p> <p>VICTORIA'S SECRET</p> <p>SEPHORA</p> <p><i>Honolulu Cookies</i></p> <p>QUIKSILVER</p>	<p>SEASIDE AVE</p> <p>WAIKIKI BUSINESS PLAZA</p> <p>Foot Locker</p>	<p>DUKE'S LN</p> <p>WAIKIKI BEACH-COMBER</p>	<p>KAIULANI AVE</p> <p>SHERATON PRINCESS KAIULANI</p>	<p>KAIULANI AVE</p> <p>KING'S VILLAGE SHOPPING CENTER</p> <p>UNDER CONSTRUCTION</p>

KALAKAU AVE

<p>BEACHWALK</p> <p>WAIKIKI BEACH WALK</p> <p>4th Floor of Hawaii</p> <p>Omega Design</p> <p>Dior VACANT</p> <p>POKE BAR</p> <p>MA HOKU JEWELERS</p> <p>HELE MAI SALON</p> <p>PARK WEST FINE ART</p> <p>LIKELELE STORE</p> <p>WYLAND</p> <p>KAHALA WAIKIKI</p> <p>SOHA LIVING BEACHWALK</p> <p>VACANT</p> <p>Yard House</p> <p>NUTS CHAIRS STEAK HOUSE</p> <p>ABC</p> <p>Pop</p> <p>BIG WAVE DAVE AT SURF & COFFEE</p>	<p>LEWERS ST</p> <p>TADRINA SICILIAN CUISINE</p> <p>VACANT</p> <p>POPIPS</p> <p>SUNSHINE SWIMWEAR</p> <p>pull-in</p> <p>CAFE GLACE</p> <p>GIOVANNI PASTRAMI NY DELI</p> <p>KOLOHE JEWELRY</p> <p><i>Honolulu Cookies</i></p> <p>VACANT</p> <p>CARLUDOVICA</p>	<p>WAIKIKI BEACH WALK</p> <p>VACANT</p> <p>WINSTON</p> <p>TORY BURCH</p> <p>VACANT</p> <p>VACANT</p> <p>VACANT</p> <p>VACANT</p> <p>VALENTINO</p> <p>RIMOWA</p> <p>VACANT</p> <p>FENDI</p> <p>WITH</p> <p>JIMMY CHOO</p> <p>VACANT</p> <p>The Cheesecake Factory</p>	<p>ROYAL HAWAIIAN CENTER</p> <p>KOHO CHOCOLATES</p> <p>ROXY</p> <p>QUIKSILVER</p> <p>Duke's</p> <p><i>Honolulu Cookies</i></p> <p>NA HOKU</p> <p>RON HERMAN</p>	<p>OUTRIGGER WAIKIKI</p> <p>HONOLULU COFFEE CO</p> <p>ALOHA COLLECTION</p> <p>LAWSON STATION</p> <p>WAIKIKI CHRISTMAS STORE</p> <p>MONI MOANA</p> <p>SAN LORENZO</p>

2284

KALAKAUA AVE

HONOLULU, HI 96815



2284 Kalakaua Ave

MELISA PREUS (B)

Vice President

Lic. RB-17696

+1 808 541 5158

melisa.preus@cbre.com

CBRE, Inc. | RB-20142

CBRE

©2024 CBRE, Inc. All rights reserved. This information has been obtained from sources believed reliable but has not been verified for accuracy or completeness. You should conduct a careful, independent investigation of the property and verify all information. Any reliance on this information is solely at your own risk. CBRE and the CBRE logo are service marks of CBRE, Inc. All other marks displayed on this document are the property of their respective owners, and the use of such logos does not imply any affiliation with or endorsement of CBRE. Photos herein are the property of their respective owners. Use of these images without the express written consent of the owner is prohibited.

MP:RMP_RE58_2284KalakauaAve_04.04.24