



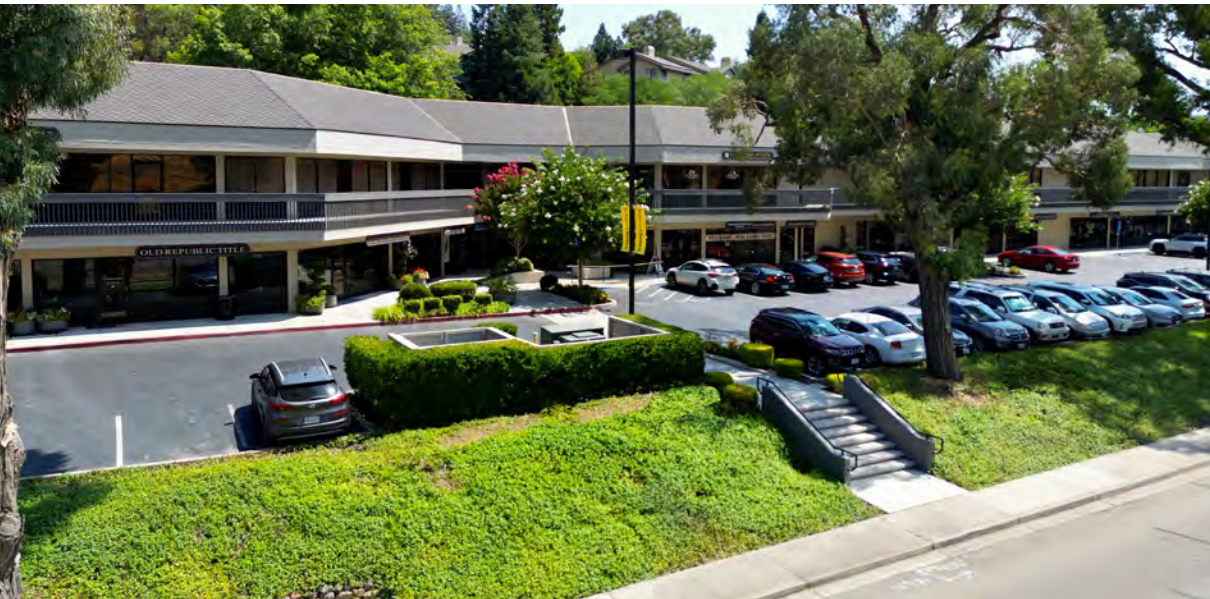
TICE VALLEY PLAZA

*Prime ±1,643 RSF of commercial space available for
lease in Walnut Creek, CA*

1874 TICE VALLEY BLVD, WALNUT CREEK, CA

WILL BALLOWE
925.389.2499 | will.ballowe@kidder.com
LIC N° 02053125

→ VIEW TICE VALLEY PLAZA



*Ground Floor ±1,643 RSF Suite with
Prominent Tice Valley Blvd Exposure
and Direct Parking Access*

Most prominent ground floor suite which includes high quality exterior signage facing Tice Valley Boulevard which has traffic counts over ±25,000 cars per day

Property management and ownership located ±1.0 mile away from the property

Beautifully updated Property with new hardscape directly outside of the Premises

Flexible zoning of PD allows for multiple business uses including, but not limited to office, retail, medical, service etc.

Ideal parking parking ratio featuring 154 stalls (3.93:1,000)

Direct access from parking lot to suite

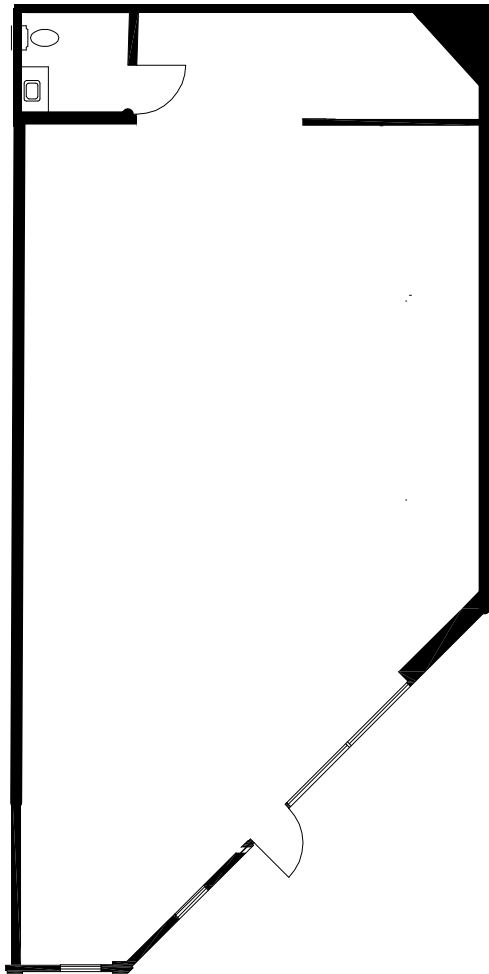
±1,643

RSF AVAILABLE

CALL

AGENT FOR LEASE RATE

FLOOR PLAN



±1,643 RSF

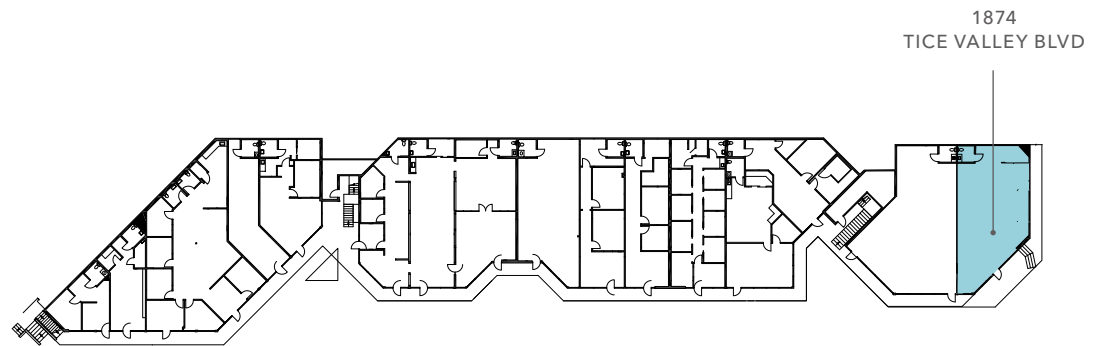
AVAILABLE

CALL

AGENT FOR LEASE RATE

NOW

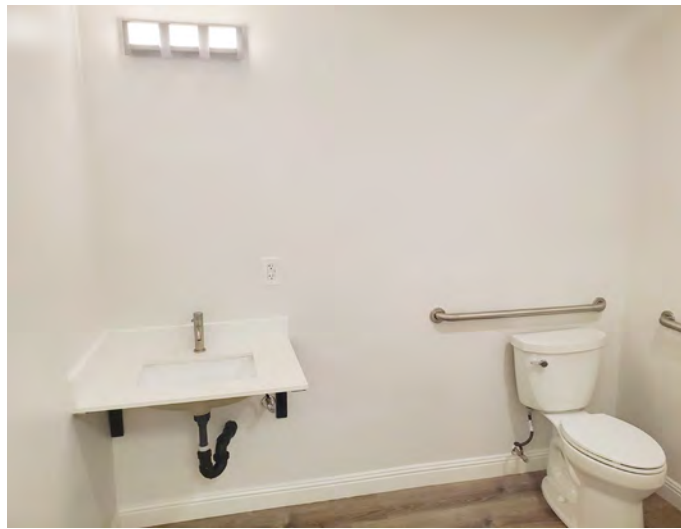
AVAILABLE



1874
TICE VALLEY BLVD

FLOOR PLAN NOT TO SCALE

TICE VALLEY PLAZA





±20,019 VEHICLES
Average Daily Traffic

1874 TICE
VALLEY BLVD

ROSSMOOR SHOPPING CENTER

MAIN STREET PLAZA

LIBERTY BELL PLAZA

BROADWAY PLAZA

WALNUT CREEK

1874 TICE VALLEY BLVD

For more information on this property, please contact

WILL BALLOWE
925.389.2499
will.ballowe@kidders.com
LIC N° 02053125

KIDDER.COM

This information supplied herein is from sources we deem reliable. It is provided without any representation, warranty, or guarantee, expressed or implied as to its accuracy. Prospective Buyer or Tenant should conduct an independent investigation and verification of all matters deemed to be material, including, but not limited to, statements of income and expenses. Consult your attorney, accountant, or other professional advisor. All Kidder Mathews designs are the sole property of Kidder Mathews. Branded materials and layouts are not authorized for use by any other firm or person.

