

# 2074 S. FOSTER AVE.

WHEELING, IL 60090



3,045 SF UNIT // INDUSTRIAL PROPERTY FOR LEASE



## OFFERING SUMMARY

Total Building Size:	8,000 SF
Available Space:	3,045 SF
Ceiling Height:	12' Clear
Drive-In Doors:	1 (10'x10')
Power:	800 Amps
Parking:	4 Spaces
Sprinklers:	Yes
Lease Rate:	\$8.95/SF Modified Gross

## PROPERTY OVERVIEW

Full air conditioned warehouse. Sprinklers. Potential for office build out to a tenant's need.

## LOCATION OVERVIEW

Established industrial park with easy access to major transportation routes. Less than 2 miles to full interchange at I-294 and Palatine Rd.



Map data ©2020 Imagery ©2020, Landsat / Copernicus, Maxar Technologies, U.S. Geological Survey, USDA Farm Service Agency

For More Information:

### PAT CROWLEY

847.758.9200 x310  
pcrowley@browncommercialgroup.com

### TRINITY SCURTO

847.758.9200 x304  
tscurto@browncommercialgroup.com

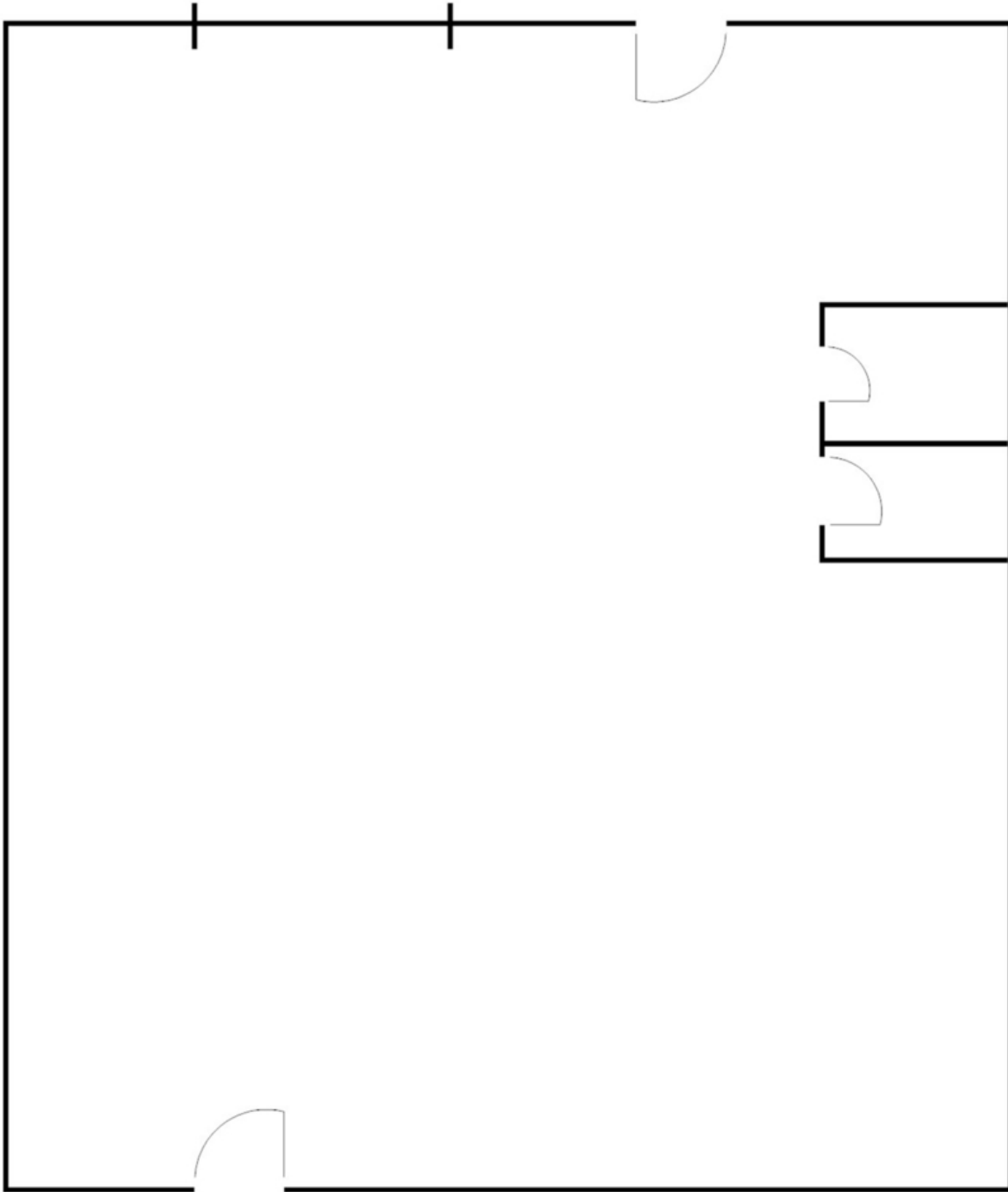


2074 S. FOSTER AVE.

WHEELING, IL 60090



3,045 SF UNIT // INDUSTRIAL PROPERTY FOR LEASE



For More Information:

**PAT CROWLEY**

847.758.9200 x310

pcrowley@browncommercialgroup.com

**TRINITY SCURTO**

847.758.9200 x304

tscurto@browncommercialgroup.com

