



For Lease

5809 Johnson Drive

Mission, Kansas

Property Features

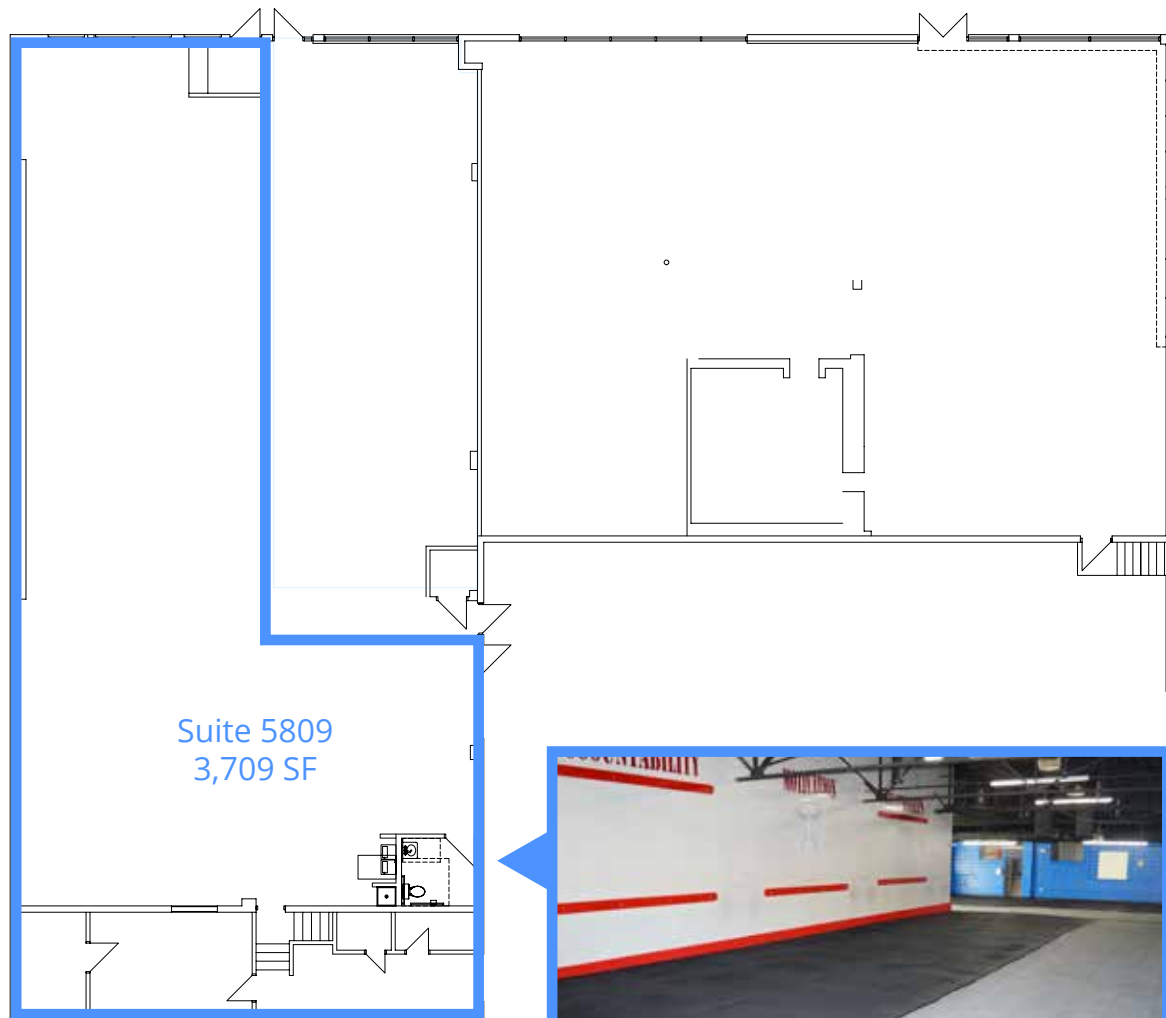
- Suite 5809: 3,709 SF (former fitness tenant)
- Excellent visibility & signage to 13,030 cars per day on Johnson Drive
- Plenty of drive-up parking in addition to city parking behind building
- Building remodeled in 2015
- Ideal for retail, medical, fitness, or restaurant
- Lease rate: \$16.50/SF



Pat Coppinger
Senior Vice President
+1 816 556 1110
pat.coppinger@colliers.com



Floor Plan



STE 5809 - Former fitness space

Demographics



Total Population

1-mile	11,369
3-mile	89,590
5-mile	266,987



Projected Population (2029)

1-mile	11,711
3-mile	91,293
5-mile	271,558



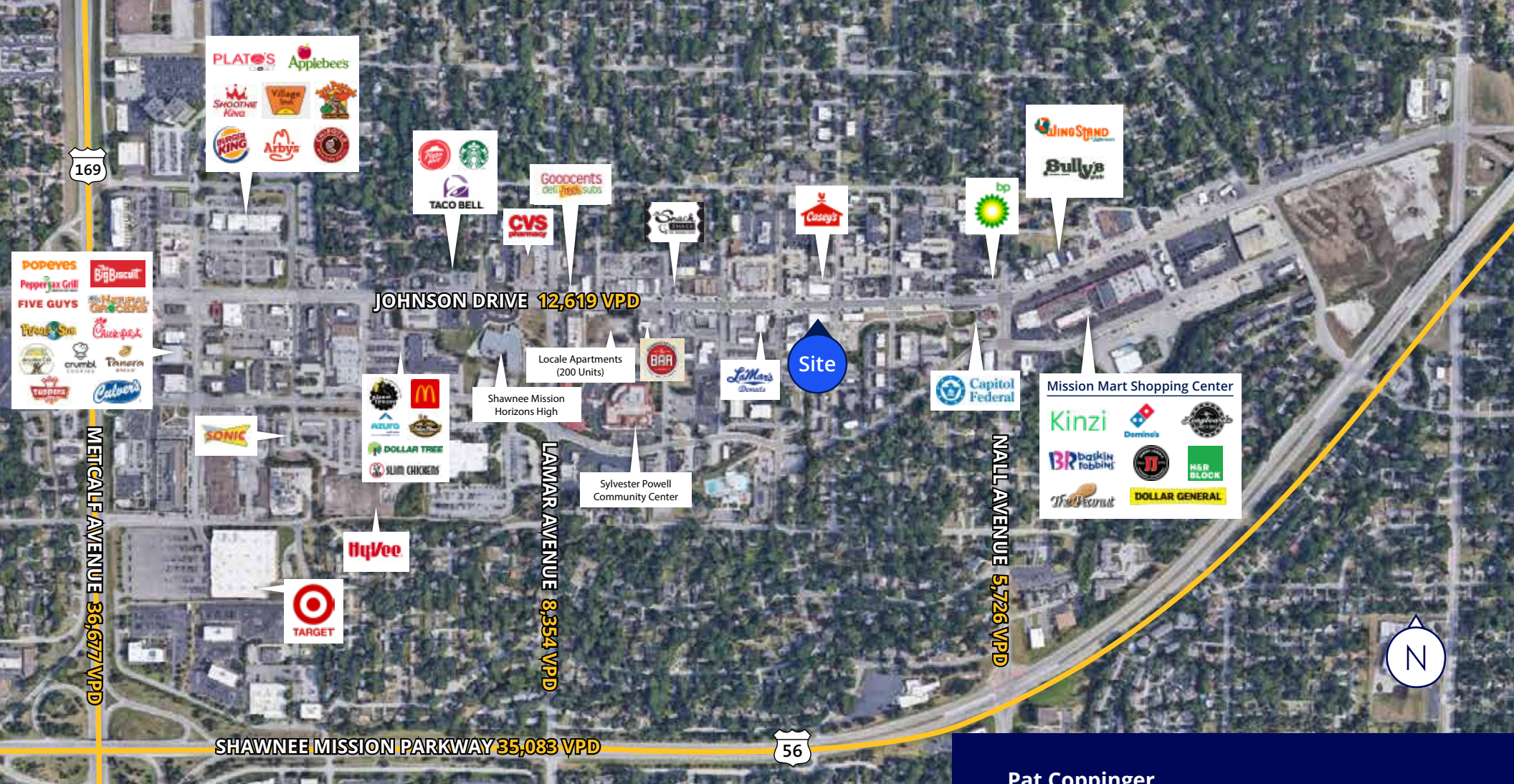
Average Household Income

1-mile	\$111,942
3-mile	\$121,484
5-mile	\$113,868



Median Household Income

1-mile	\$85,496
3-mile	\$83,585
5-mile	\$78,059



5809 Johnson Drive

Mission, Kansas

Pat Coppinger
Senior Vice President
+1 816 556 1110
pat.coppinger@colliers.com

This document has been prepared by Colliers for advertising and general information only. Colliers makes no guarantees, representations or warranties of any kind, expressed or implied, regarding the information including, but not limited to, warranties of content, accuracy and reliability. Any interested party should undertake their own inquiries as to the accuracy of the information. Colliers excludes unequivocally all inferred or implied terms, conditions and warranties arising out of this document and excludes all liability for loss and damages arising there from. This publication is the copyrighted property of Colliers and/or its licensor(s). ©2025. All rights reserved. This communication is not intended to cause or induce breach of an existing listing agreement.



Colliers Kansas City
4900 Main Street, Suite 400
Kansas City, MO 64112
+1 816 531 5303
colliers.com/kansascity