

Office / Space For Lease

# Chase Park Office Center

4323 NW 63rd, Oklahoma City, OK 73116

**WIGGIN**  
PROPERTIES, LLC  
41 YEARS STRONG



## Office for Lease

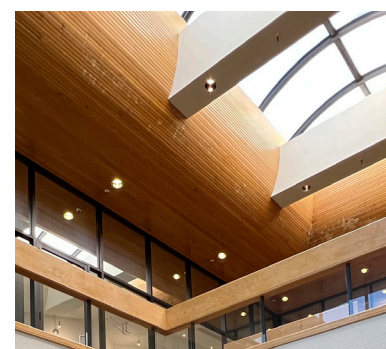
Chase Park Office Center

Type: Office/Space for Lease

Rate: \$15.75/SF Full Service

### Highlights:

- Great rent rate, convenient location with easy access to entire metro area.
- Two-story, glass lit atrium provides an abundance of natural light.
- The building reflects an attention to detail and pride of ownership.
- Abundant parking always available for staff and clients.
- Less than 1/2 mile from Northwest Expressway and 1 mile from Hefner Parkway.



Call Matt Ralls at **405.842.0100**

[mralls@wigginprop.com](mailto:mralls@wigginprop.com) | [wigginprop.com](http://wigginprop.com)

This material is provided for information purposes only. It is from sources believed to be reliable. However, Wiggin Properties makes no warranties or representations, expressed or implied, as to the accuracy or sufficiency of the information. It is presented subject to errors, omissions, changes or withdrawal without notice. Square footage is provided by the local County Assessor or the Owner. Photos and graphics with copyrights by Costar, Google, Wiggin Properties and independent contractors are used with permission.

Office / Space For Lease

# Chase Park Office Center

4323 NW 63rd, Oklahoma City, OK 73116

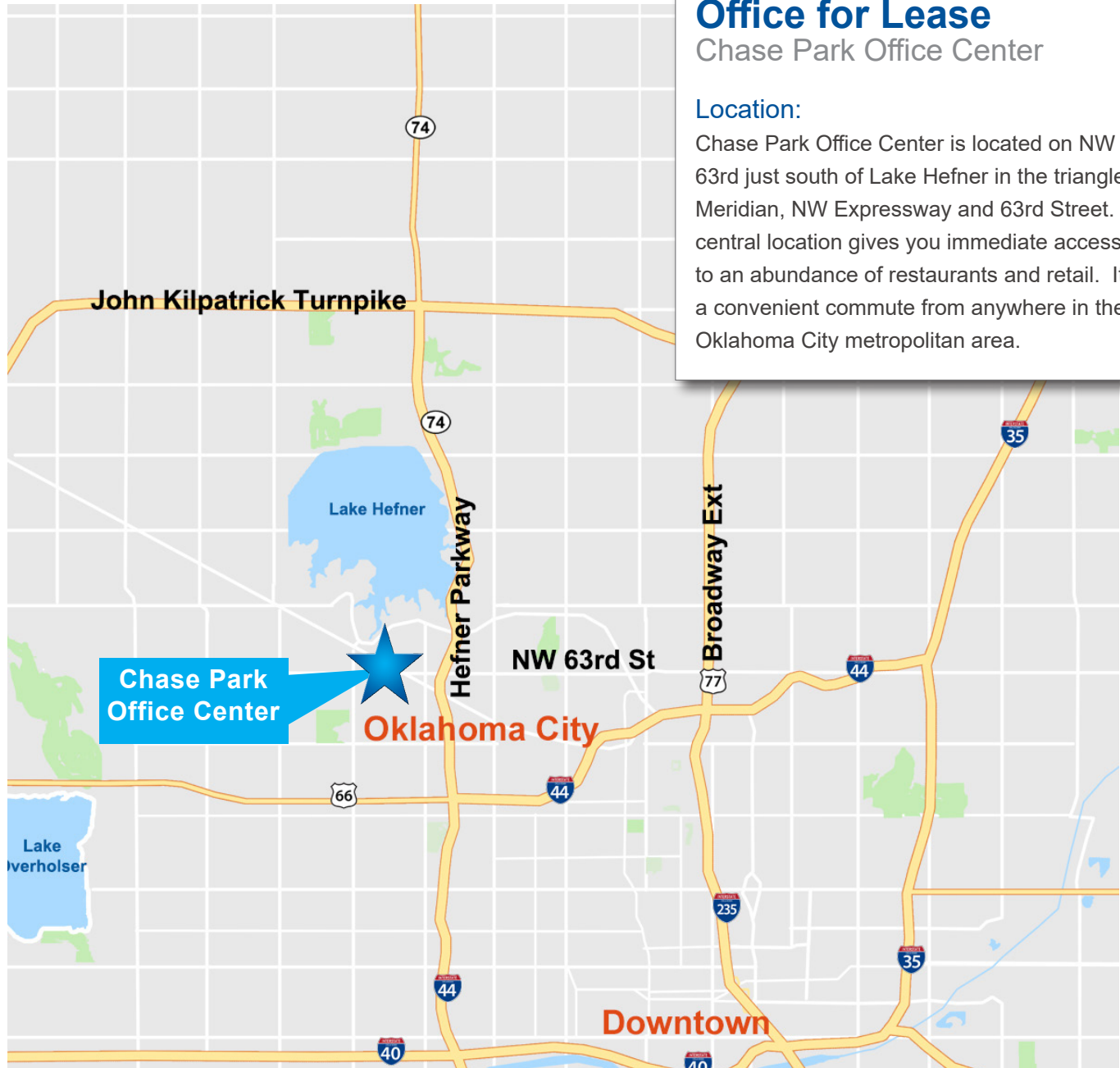
**WIGGIN**  
PROPERTIES, LLC  
41 YEARS STRONG

## Office for Lease

Chase Park Office Center

### Location:

Chase Park Office Center is located on NW 63rd just south of Lake Hefner in the triangle of Meridian, NW Expressway and 63rd Street. This central location gives you immediate access to an abundance of restaurants and retail. It's a convenient commute from anywhere in the Oklahoma City metropolitan area.



Call Matt Ralls at **405.842.0100**

[mralls@wigginprop.com](mailto:mralls@wigginprop.com) | [wigginprop.com](http://wigginprop.com)

This material is provided for information purposes only. It is from sources believed to be reliable. However, Wiggin Properties makes no warranties or representations, expressed or implied, as to the accuracy or sufficiency of the information. It is presented subject to errors, omissions, changes or withdrawal without notice. Square footage is provided by the local County Assessor or the Owner. Photos and graphics with copyrights by Costar, Google, Wiggin Properties and independent contractors are used with permission.

Office / Space For Lease

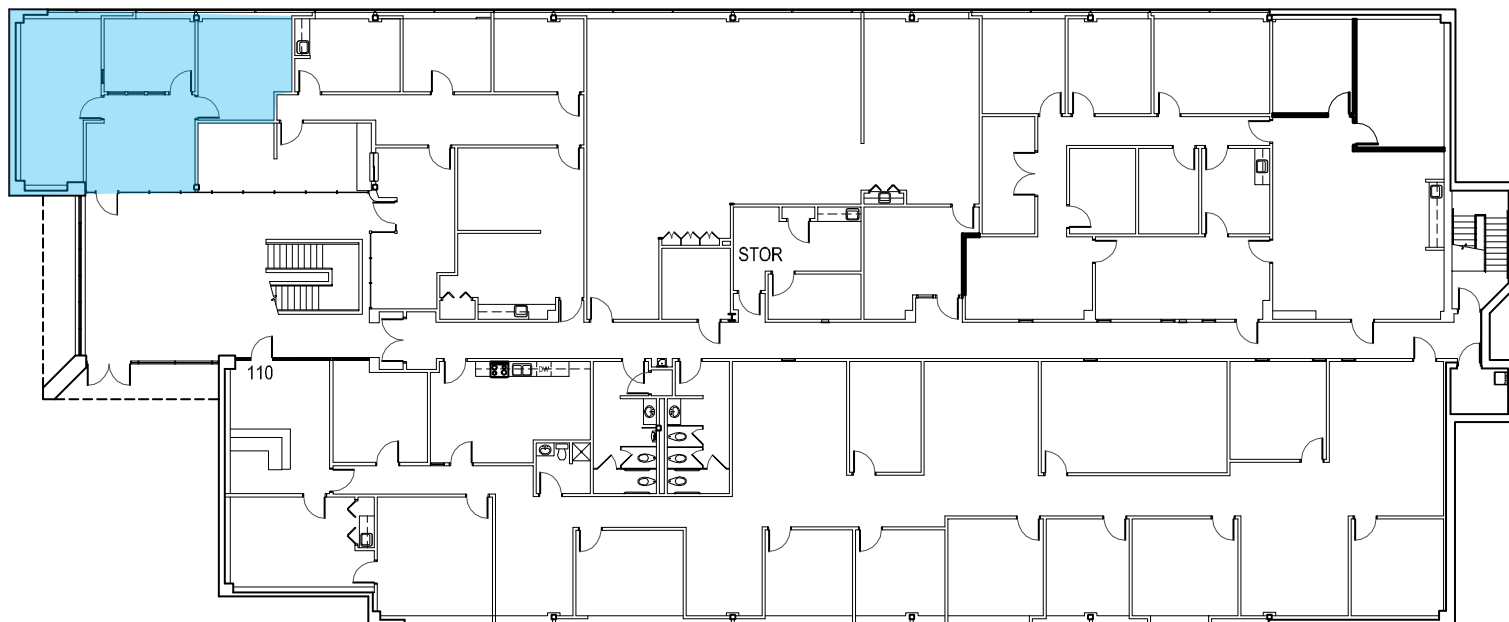
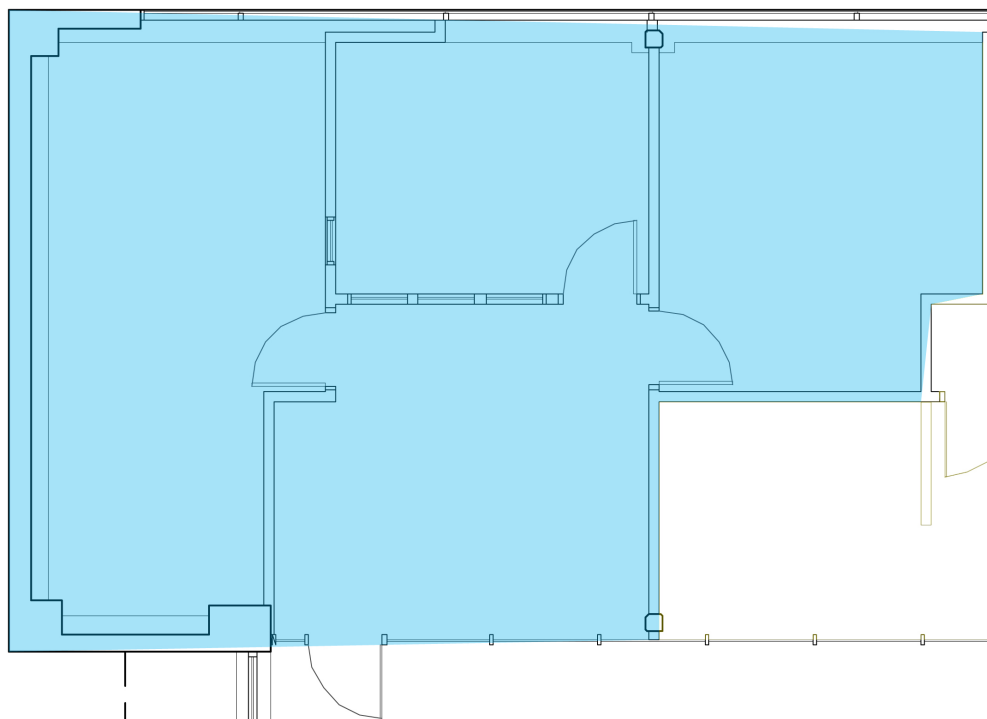
# Chase Park Office Center

4323 NW 63rd, Oklahoma City, OK 73116

**WIGGIN**  
PROPERTIES, LLC  
41 YEARS STRONG

## Suite 100

978 RSF



Call Matt Ralls at **405.842.0100**

[mralls@wigginprop.com](mailto:mralls@wigginprop.com) | [wigginprop.com](http://wigginprop.com)

This material is provided for information purposes only. It is from sources believed to be reliable. However, Wiggin Properties makes no warranties or representations, expressed or implied, as to the accuracy or sufficiency of the information. It is presented subject to errors, omissions, changes or withdrawal without notice. Square footage is provided by the local County Assessor or the Owner. Photos and graphics with copyrights by Costar, Google, Wiggin Properties and independent contractors are used with permission.