



FOR LEASE



## 2ND-GEN RESTAURANT AT THE STREETS

**2nd-Generation Restaurant Space with Outdoor Seating**

± 6,989 SF | Call for Details

**2295 NE Allie Ave, Hillsboro, OR 97124**

- The Streets is a premier open air center providing an essential shopping experience to Hillsboro and the surrounding communities
- Anchored by REI, the center boasts national and local retailers, outstanding food operators, and everyday services.
- 867 Space Parking Structure—free patron parking and grade level parking.
- Planned Development: **Broadstone Tanasbourne** — A New Mixed-Use Housing Development with 308 Apartments and ±5,000 SF of Ground-Floor Retail
- FE&E Negotiable

**MICHELLE D. ROZAKIS**

**Principal Broker** | Licensed in OR

**503-222-1195** | [mrozakis@capacitycommercial.com](mailto:mrozakis@capacitycommercial.com)

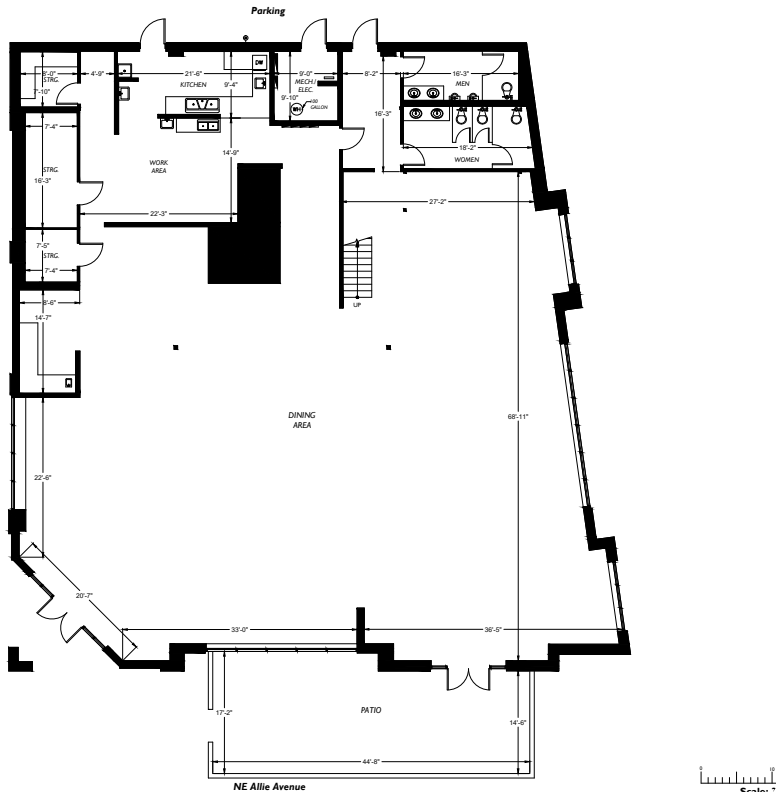
**NICHOLAS G. DIAMOND**

**Principal Broker** | Licensed in OR & WA

**503-222-2655** | [ndiamond@capacitycommercial.com](mailto:ndiamond@capacitycommercial.com)



# PROPERTY SUMMARY



## PROPERTY DETAILS

Address	2295 NE Allie Ave, Hillsboro, OR 97124
Available Space	6,989 SF
Lease Rate	Call for Details
Use Type	Restaurant
Availability	Now

## Location Features

- In the heart of a vibrant community centrally located between a strong office/tech community and an ever-growing residential community, this center offers a high level of visibility and foot traffic, with a diverse mix of service and retail tenants to draw in a broad range of shoppers.
- Patio space for outdoor seating
- Stand alone building with great visibility from NE Stucki Ave - ±7,360 ADTV\*

\*Average Daily Traffic Volume | Traffic Counts are Provided by REGIS Online at SitesUSA.com ©2024

## Current Tenants

- REI
- Gap
- H&M
- American Eagle
- Banana Republic
- Bath & Body Works
- Buffalo Wild Wings
- Color Me Mine
- Killer Burger
- Legends Barbershop
- P.F Changs
- Sephora
- Victoria's Secret
- Corner Bakery
- Yummy Time
- The Lash Lounge
- lululemon

## Neighborhood Scores

82

Walk Score®  
"Very Walkable"

87

Bike Score®  
"Very Bikeable"

40

Transit Score®  
"Some Transit"

Ratings provided by <https://www.walkscore.com>





# SITE AERIAL MAP

