

Worlds Fair Corporate Center

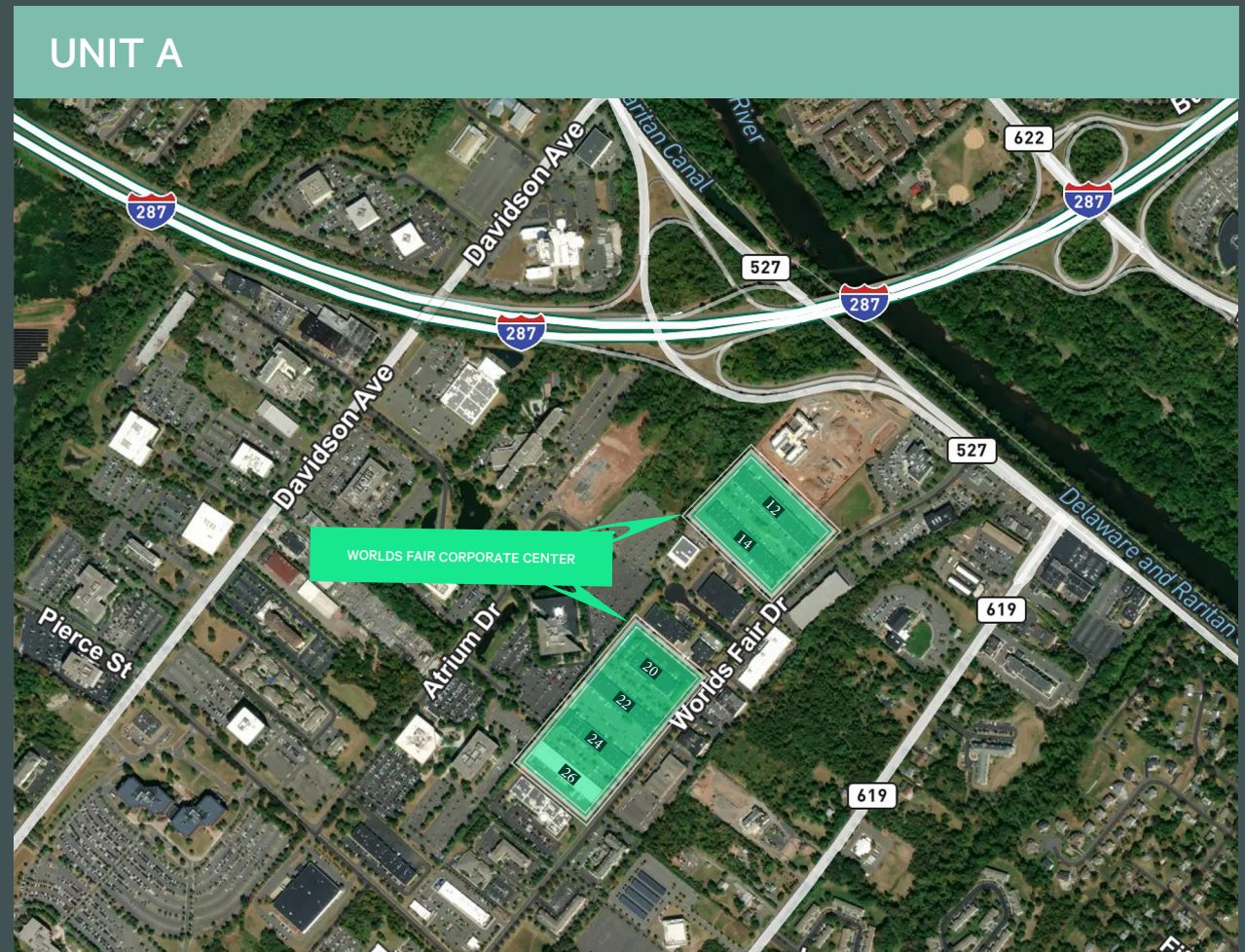
24 Worlds Fair Drive
Somerset, NJ 08873

Specifications

Total SF Available:	+3,500 sq. ft.
Office SF:	+2,390 sq. ft.
Warehouse SF:	±1,110 sq. ft.
Year Built:	1984
Ceiling Height:	18'
Loading:	1 tailboard door
Power:	200 amps
Sprinkler:	Wet system
Occupancy:	April 2026

Contact Us

Robert Pine
Senior Vice President
+1 732 509 2830
robert.pine@cbre.com



Floor Plan

- + Unit A: ±3,500 sq. ft. available
- + Office: ±2,390 sq. ft.
- + Warehouse: ±1,110 sq. ft.

Comments

- + 1 per 1,000 car parking
- + Occupancy: Immediate
- + Access to:
 - I-287
 - Route 27
 - New Jersey Turnpike
 - Garden State Parkway

