

# PINNACLE PARK II - 3801 PINNACLE POINT DRIVE

3801 Pinnacle Point Drive  
Dallas, TX 75211

## Industrial For Lease

157,467 SF



Leasing Information:  
214.740.3300

**Gil Stroube**  
214.740.3427  
gstroube@lpc.com

**Michael Peinado**  
214.740.3356  
mpeinado@lpc.com

**Tom Kuhlmann**  
214.740.3363  
tkuhlmann@lpc.com

**Doak Dozier**  
214.740.3574  
ddozier@lpc.com

# Lincoln

Lincoln Property Company  
8111 Douglas Avenue  
Dallas, TX 75225

[www.lpc.com](http://www.lpc.com)

# PINNACLE PARK II - 3801 PINNACLE POINT DRIVE

Industrial For Lease

3801 Pinnacle Point Drive | Dallas, TX 75211



## Property Highlights

- 30' Clear Height
- ESFR Sprinkler System
- Front Load Configuration
- Fully fenced 138' truck court
- 55' Speed Bays
- Standing seam roof system with R-10 insulation
- Immediate Access to I-30

## Availabilities

3801 Pinnacle Point Drive

## SF

157,467 SF

## Lease Rate

Negotiable

## Date Available

Immediately

**Gil Stroube**

214.740.3427  
gstroube@lpc.com

**Michael Peinado**

214.740.3356  
mpeinado@lpc.com

**Tom Kuhlmann**

214.740.3363  
tkuhlmann@lpc.com

**Doak Dozier**

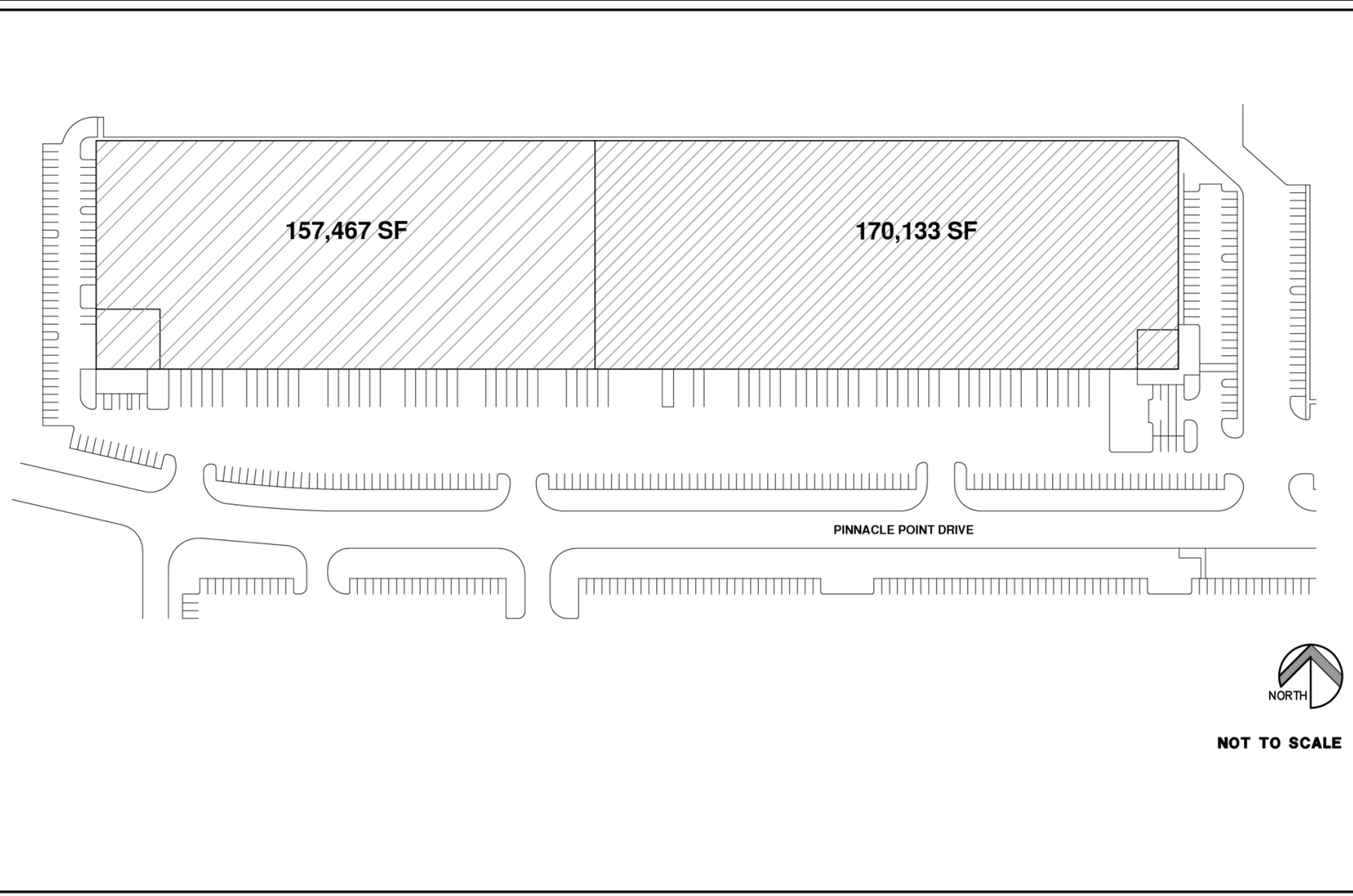
214.740.3574  
ddozier@lpc.com

**Lincoln**

# PINNACLE PARK II - 3801 PINNACLE POINT DRIVE

Site Plan

3801 Pinnacle Point Drive | Dallas, TX 75211



Suite	Size	Lease Rate	Description
3801 Pinnacle Point Drive	157,467 SF	Negotiable	-2,500 SF Office -34 Dock Doors (16 with levelers and lights) -Grade Level accessibility with one (1) oversized door -102 Car Parks

**Gil Stroube**

214.740.3427  
gstroube@lpc.com

**Michael Peinado**

214.740.3356  
mpeinado@lpc.com

**Tom Kuhlmann**

214.740.3363  
tkuhlmann@lpc.com

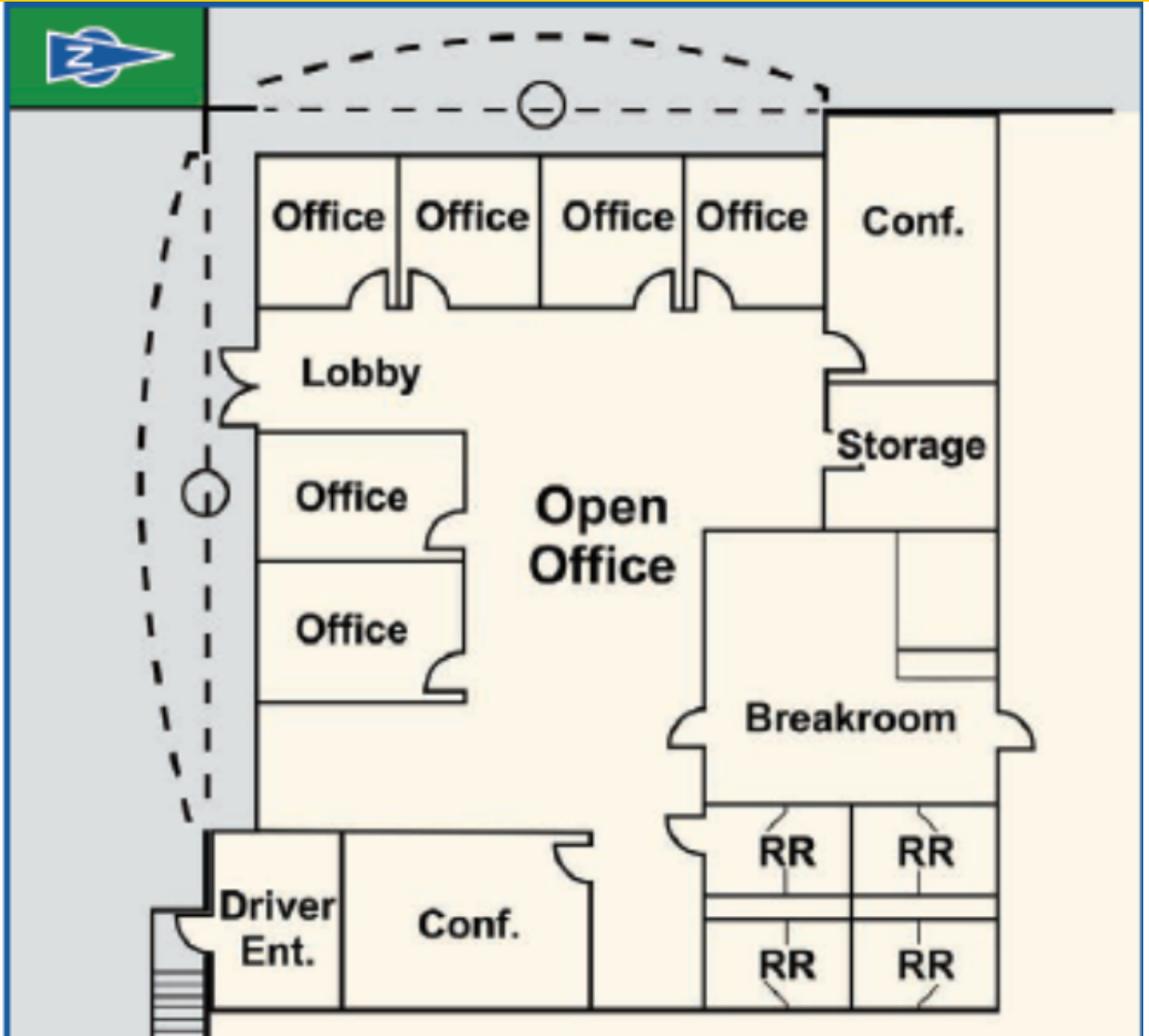
**Doak Dozier**

214.740.3574  
ddozier@lpc.com

**Lincoln**

# PINNACLE PARK II - 3801 PINNACLE POINT DRIVE 2,500 SF Office Plan

3801 Pinnacle Point Drive | Dallas, TX 75211



**Gil Stroube**

214.740.3427  
gstroube@lpc.com

**Michael Peinado**

214.740.3356  
mpeinado@lpc.com

**Tom Kuhlmann**

214.740.3363  
tkuhlmann@lpc.com

**Doak Dozier**

214.740.3574  
ddozier@lpc.com

**Lincoln**

# PINNACLE PARK II - 3801 PINNACLE POINT DRIVE

Site Plan

3801 Pinnacle Point Drive | Dallas, TX 75211



**Gil Stroube**

214.740.3427  
gstroube@lpc.com

**Michael Peinado**

214.740.3356  
mpeinado@lpc.com

**Tom Kuhlmann**

214.740.3363  
tkuhlmann@lpc.com

**Doak Dozier**

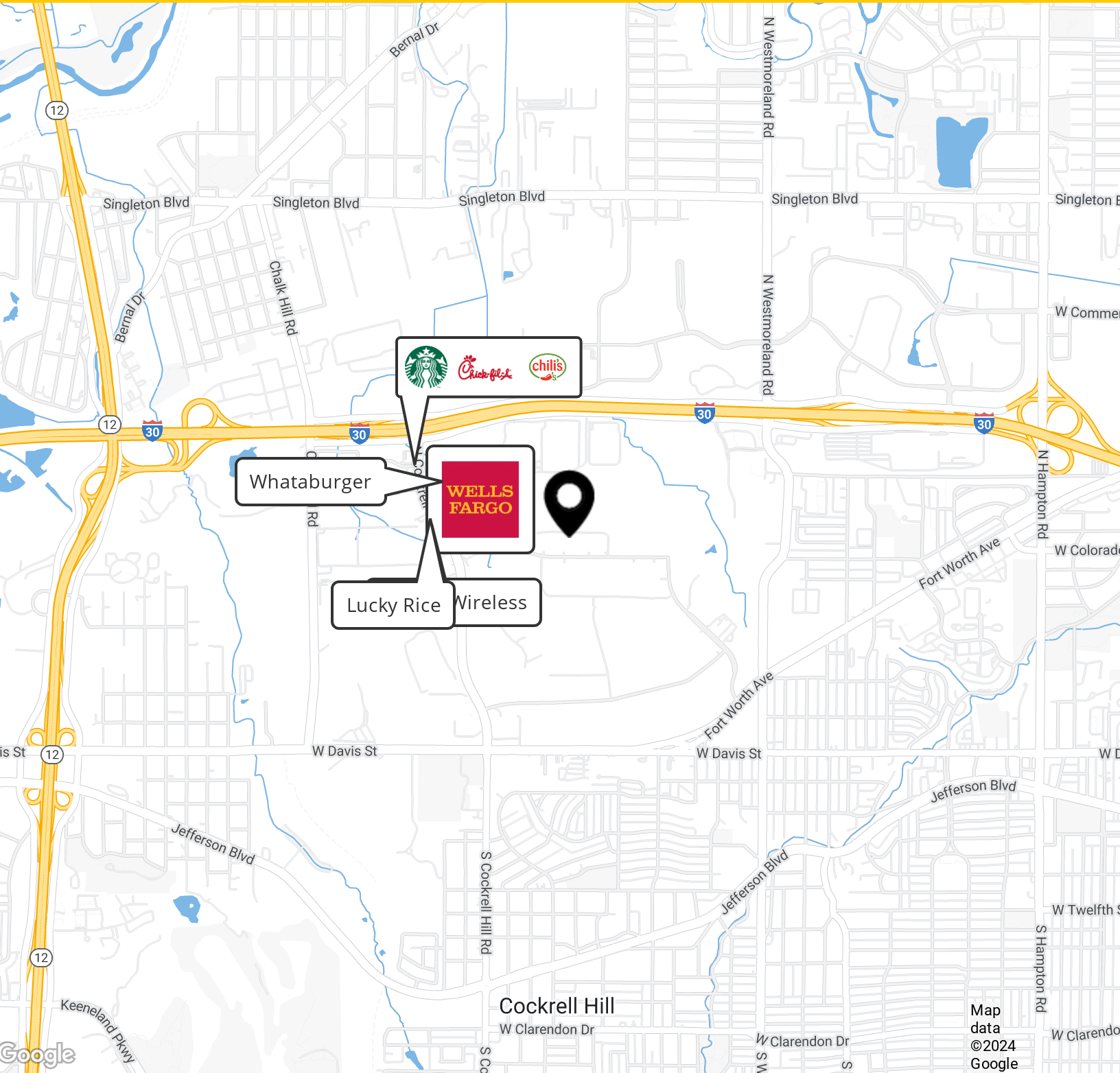
214.740.3574  
ddozier@lpc.com

**Lincoln**

# PINNACLE PARK II - 3801 PINNACLE POINT DRIVE

## Location Map

3801 Pinnacle Point Drive | Dallas, TX 75211



**Gil Stroube**

214.740.3427  
gstroube@lpc.com

**Michael Peinado**

214.740.3356  
mpeinado@lpc.com

**Tom Kuhlmann**

214.740.3363  
tkuhlmann@lpc.com

**Doak Dozier**

214.740.3574  
ddozier@lpc.com

# Lincoln



# PINNACLE PARK II - 3801 PINNACLE POINT DRIVE

3801 Pinnacle Point Drive  
Dallas, TX 75211

Leasing Information:  
214.740.3300

**Gil Stroube**  
214.740.3427  
gstroube@lpc.com

**Michael Peinado**  
214.740.3356  
mpeinado@lpc.com

**Tom Kuhlmann**  
214.740.3363  
tkuhlmann@lpc.com

**Doak Dozier**  
214.740.3574  
ddozier@lpc.com

## Lincoln

Lincoln Property Company  
8111 Douglas Avenue  
Dallas, TX 75225

[www.lpc.com](http://www.lpc.com)