



IN-LINE RETAIL SPACE FOR LEASE

19,900 +/- SF RETAIL BUILDING

DEMOGRAPHICS

Radius Ring	1 mile	3 miles	5 miles
Estimated Population	7,424	52,759	90,476
Avg. Household Income	\$74,228	\$96,163	\$93,912

DEMOGRAPHICS

Drive Time	5 minute	10 minute	15 minute
Estimated Population	22,221	74,221	170,888
Avg. Household Income	\$93,466	\$90,853	\$85,815

- 1,900 SF In-Line Retail Space
- 19,900 SF +/- Retail strip center in Shops of Liberty Commons - tenants include: uBreakiFix, Claire's, QZ Poke Ramen, Sleek Nails & Spa, Orange Theory Fitness, and McAlister's Deli
- Shops at Liberty Commons is anchored by Home Goods and Hobby Lobby
- Located in one of the fastest growing areas in greater Kansas City with over one million square feet of traffic generators at this intersection including JC Penney, Kohl's, Home Depot, Walmart Supercenter, Super Target, Bed Bath & Beyond, Best Buy, Sprouts, and many others

[CLICK HERE TO VIEW MORE LISTING INFORMATION](#)

For More Information Contact:

DAKOTA GRIZZLE | 816.412.7395 | dgrizzle@blockandco.com

ALEX BLOCK | 816.412.7373 | ablock@blockandco.com

DAVID BLOCK | 816.412.7400 | dblock@blockandco.com

1,900 SF RETAIL SPACE PHOTOS



PROPERTY PHOTOS





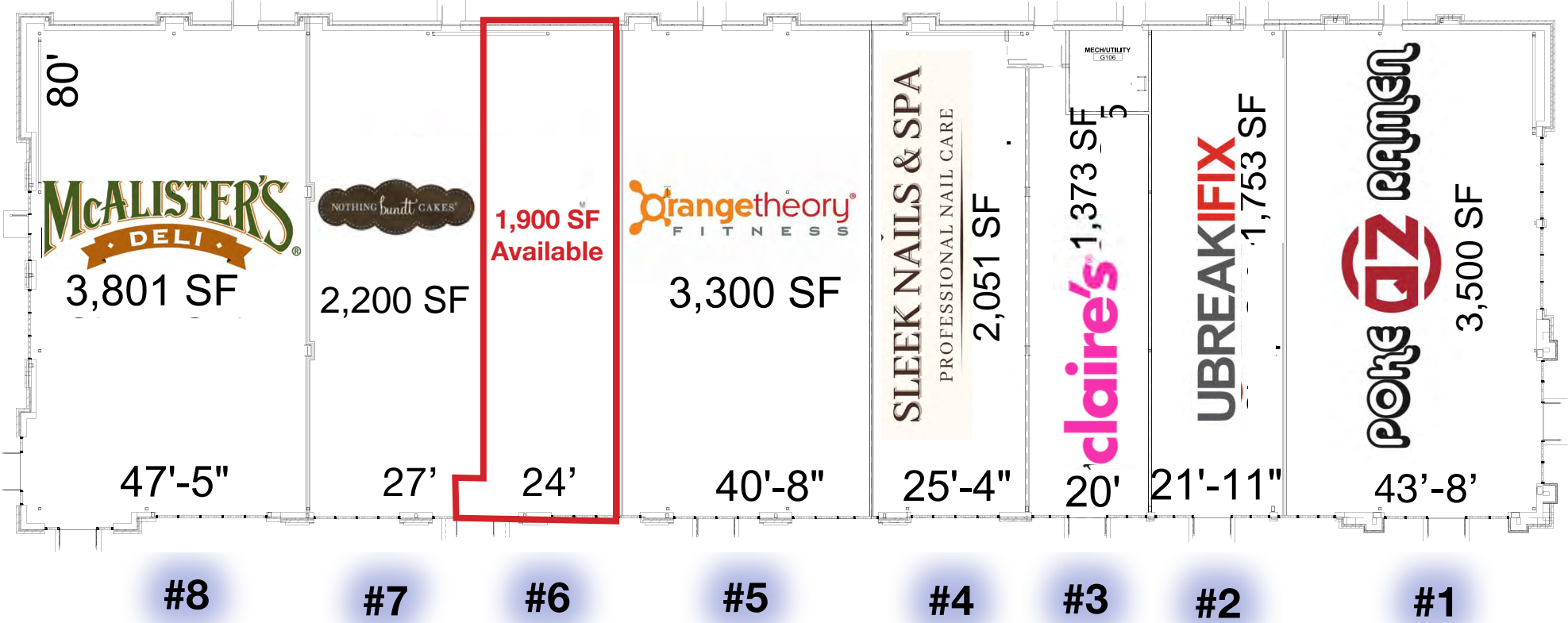
SHOPS AT LIBERTY COMMONS

I-35 & 152 Highway (SEQ), Liberty, Missouri

SITE PLAN



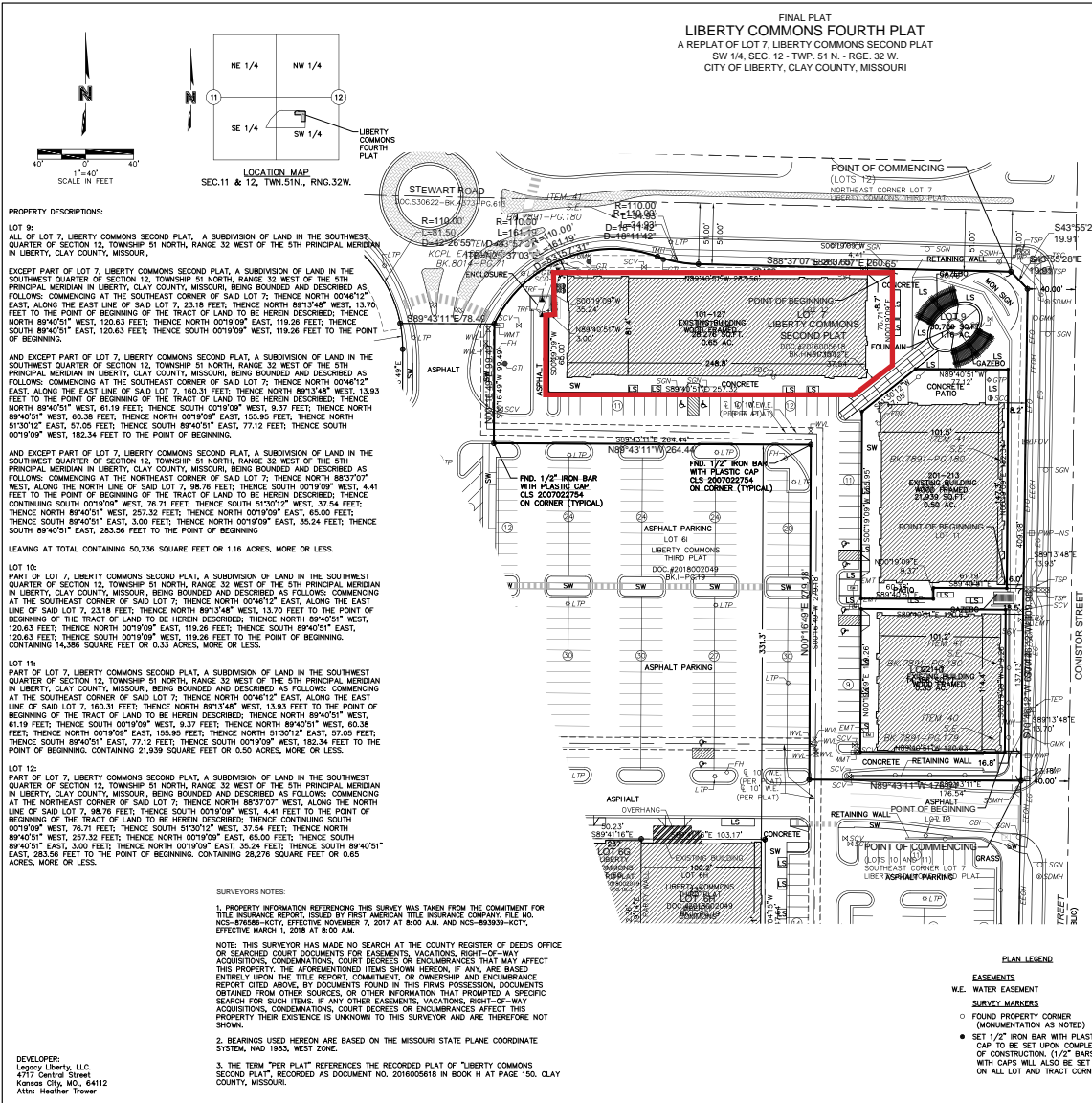
#	Name	SF	Address
1	QZ Poke Ramen	3,500 SF	103 S. Stewart Road
2	uBreakiFix	1,753 SF	107 S. Stewart Road
3	Claire's	1,373 SF	109 S. Stewart Road
4	Sleek Nails & Spa	2,051 SF	113 S. Stewart Road
5	Orange Theory Fitness	3,300 SF	117 S. Stewart Road
6	AVAILABLE	1,900 SF	121a S. Stewart Road
7	Nothing Bundt Cakes	2,200	121b S. Stewart Road
8	McAlister's Deli	3,801 SF	127 S. Stewart Road



SHOPS AT LIBERTY COMMONS

I-35 & 152 Highway (SEQ), Liberty, Missouri

SURVEY



CITY PLAN COMMISSION AND ZONING COMMISSION:
 Approved by the Planning and Zoning Commission of the City of Liberty, Missouri, this _____ day of _____, 2018.

Dee Rosekrans
 City Planning and Zoning Commission Chairman

CITY COUNCIL:
 Approved by the City Council of the City of Liberty, Missouri, this _____ day of _____, 2018.

Lyndell Brenton
 Mayor

Joel Pittman
 Deputy City Clerk

Andy Noll, P.E.
 Public Works Director

IN WITNESS WHEREOF:
 Dan Lowe, President of LEGACY LIBERTY COMMONS, INC., a Kansas corporation on behalf of LEGACY LIBERTY LLC, a Delaware limited liability company has caused these presents to be executed this _____ day of _____, 2018.

LEGACY LIBERTY, LLC,
 a Delaware limited liability company
 By: LEGACY LIBERTY COMMONS INC.,
 a Kansas corporation

Dan Lowe, President

STATE OF _____ SS
 COUNTY OF _____

Be it remembered that on this _____ day of _____, 2018, before me, the undersigned, a Notary Public in and for the County and State aforesaid, came Dan Lowe to me personally, who being by me duly sworn, did say that he is President of LEGACY LIBERTY COMMONS INC., a Kansas corporation on behalf of LEGACY LIBERTY, LLC, a Delaware limited liability company and that said instrument to be the free act and deed of said corporation and limited liability company.

IN WITNESS WHEREOF:
 I have hereunto set my hand and affixed my Notarial Seal in the date herein last above written.

My Commission Expires: _____

Notary Public

DATE OF SURVEY	
05-08-2018	16:05:02 07-10-2018
drawn by	_____
checked by	_____
approved by	_____
print scale	1/8"=1'-0"

THIS PLAT AND SURVEY OF LIBERTY COMMONS FOURTH PLAT WERE EXECUTED BY OLSSON ASSOCIATES, INC., 1301 BURLINGTON STREET #100, NORTH KANSAS CITY, MISSOURI 64116.

I HEREBY CERTIFY THAT THE PLAT OF LIBERTY COMMONS FOURTH PLAT SUBDIVISION IS BASED ON AN ACTUAL SURVEY MADE BY ME OR UNDER MY DIRECT SUPERVISION AND THAT SAID SURVEY MEETS OR EXCEEDS THE CURRENT MISSOURI MINIMUM STANDARDS FOR PROPERTY BOUNDARY SURVEYS AS ESTABLISHED BY THE MISSOURI BOARD FOR ARCHITECTS, PROFESSIONAL ENGINEERS, PROFESSIONAL SURVEYORS AND LANDSCAPE ARCHITECTS AND THE MISSOURI DEPARTMENT OF AGRICULTURE. I FURTHER CERTIFY THAT I HAVE COMPLIED WITH ALL STATUTES, ORDINANCES, AND REGULATIONS GOVERNING THE PRACTICE OF SURVEYING AND PLATING OF SUBDIVISIONS TO THE BEST OF MY PROFESSIONAL KNOWLEDGE AND BELIEF.



OLSSON ASSOCIATES, INC., NO. 015 366
 JASON S. ROEBERSON, INC. PLS. 20020014092
 JULY 10, 2018
 JROED@OLSSONASSOCIATES.COM

OLSSON ASSOCIATES

SHEET 1 of 1





SHOPS AT LIBERTY COMMONS

I-35 & 152 Highway (SEQ), Liberty, Missouri

AERIAL DRONE PHOTO





SHOPS AT LIBERTY COMMONS

I-35 & 152 Highway (SEQ), Liberty, Missouri

AERIAL DRONE PHOTO





SHOPS AT LIBERTY COMMONS

I-35 & 152 Highway (SEQ), Liberty, Missouri

AERIAL DRONE PHOTO



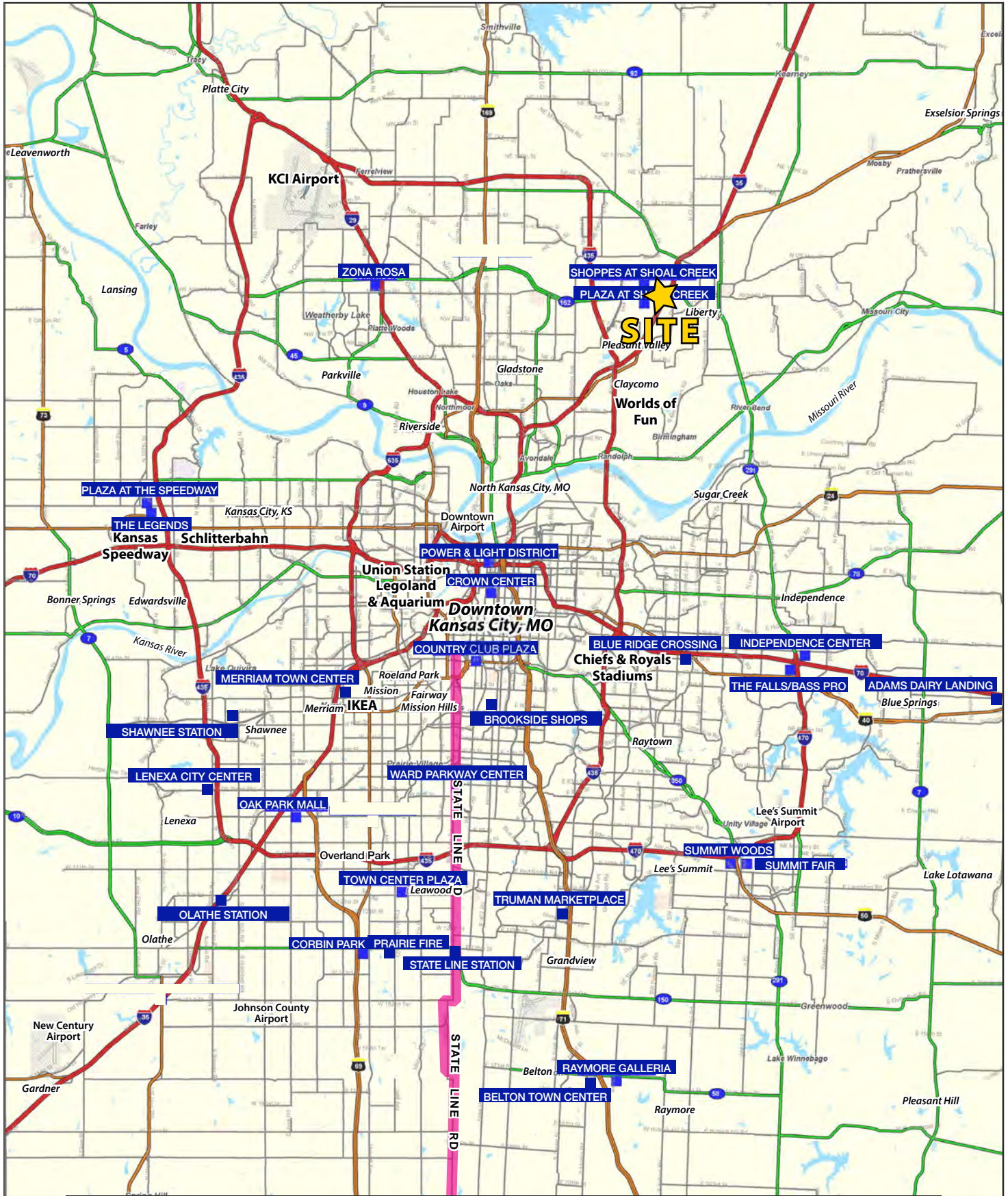
AERIAL





SHOPS AT LIBERTY COMMONS

I-35 & 152 Highway (SEQ), Liberty, Missouri

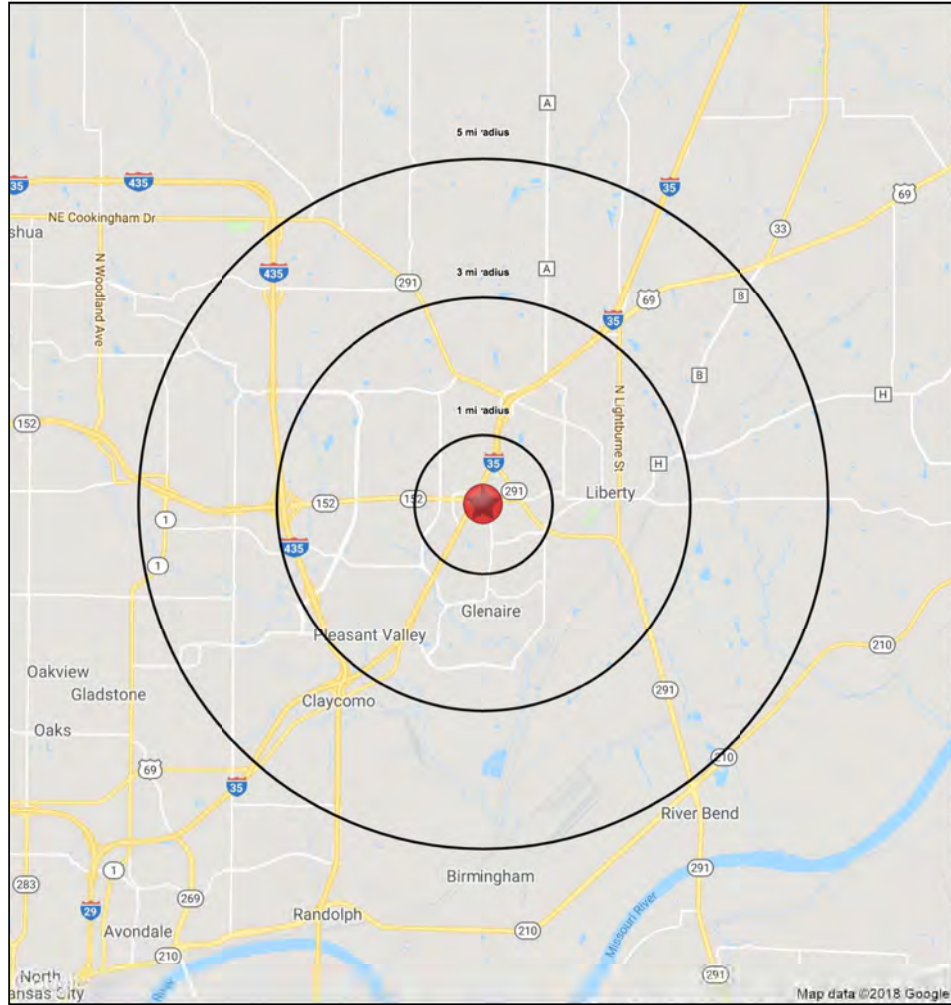




SHOPS AT LIBERTY COMMONS

I-35 & 152 Highway (SEQ), Liberty, Missouri

1-3-5 MILE RADIUS RING MAP & DEMOS



103 S Stewart Rd Liberty, MO 64068	1 mi radius	3 mi radius	5 mi radius
Population			
2022 Estimated Population	7,424	52,759	90,476
2027 Projected Population	7,603	54,538	94,846
2020 Census Population	7,300	52,127	89,211
2010 Census Population	5,753	45,028	75,140
Projected Annual Growth 2022 to 2027	0.5%	0.7%	1.0%
Historical Annual Growth 2010 to 2022	2.4%	1.4%	1.7%
2022 Median Age	41.0	36.3	35.8
Households			
2022 Estimated Households	3,152	19,569	33,768
2027 Projected Households	3,293	20,613	36,022
2020 Census Households	3,076	19,197	33,061
2010 Census Households	2,366	16,330	27,556
Projected Annual Growth 2022 to 2027	0.9%	1.1%	1.3%
Historical Annual Growth 2010 to 2022	2.8%	1.7%	1.9%
Race and Ethnicity			
2022 Estimated White	83.9%	83.1%	82.1%
2022 Estimated Black or African American	7.0%	6.1%	6.7%
2022 Estimated Asian or Pacific Islander	1.8%	3.6%	3.4%
2022 Estimated American Indian or Native Alaskan	0.3%	0.3%	0.3%
2022 Estimated Other Races	7.1%	6.9%	7.5%
2022 Estimated Hispanic	6.4%	6.2%	7.0%
Income			
2022 Estimated Average Household Income	\$74,228	\$96,163	\$93,912
2022 Estimated Median Household Income	\$65,885	\$91,253	\$91,132
2022 Estimated Per Capita Income	\$31,590	\$35,859	\$35,172
Education (Age 25+)			
2022 Estimated Elementary (Grade Level 0 to 8)	1.1%	2.4%	2.0%
2022 Estimated Some High School (Grade Level 9 to 11)	1.4%	2.5%	3.1%
2022 Estimated High School Graduate	25.7%	24.6%	25.7%
2022 Estimated Some College	23.0%	20.2%	21.0%
2022 Estimated Associates Degree Only	10.0%	8.7%	8.7%
2022 Estimated Bachelors Degree Only	25.4%	27.5%	25.4%
2022 Estimated Graduate Degree	13.4%	14.1%	14.2%
Business			
2022 Estimated Total Businesses	648	1,582	2,092
2022 Estimated Total Employees	7,596	18,134	23,273
2022 Estimated Employee Population per Business	11.7	11.5	11.1
2022 Estimated Residential Population per Business	11.5	33.4	43.3

©2023, Sites USA, Chandler, Arizona, 480-491-1112 Demographic Source: Applied Geographic Solutions 11/2022, TIGER Geography - RS1

This report was produced using data from private and government sources deemed to be reliable. The information herein is provided without representation or warranty.

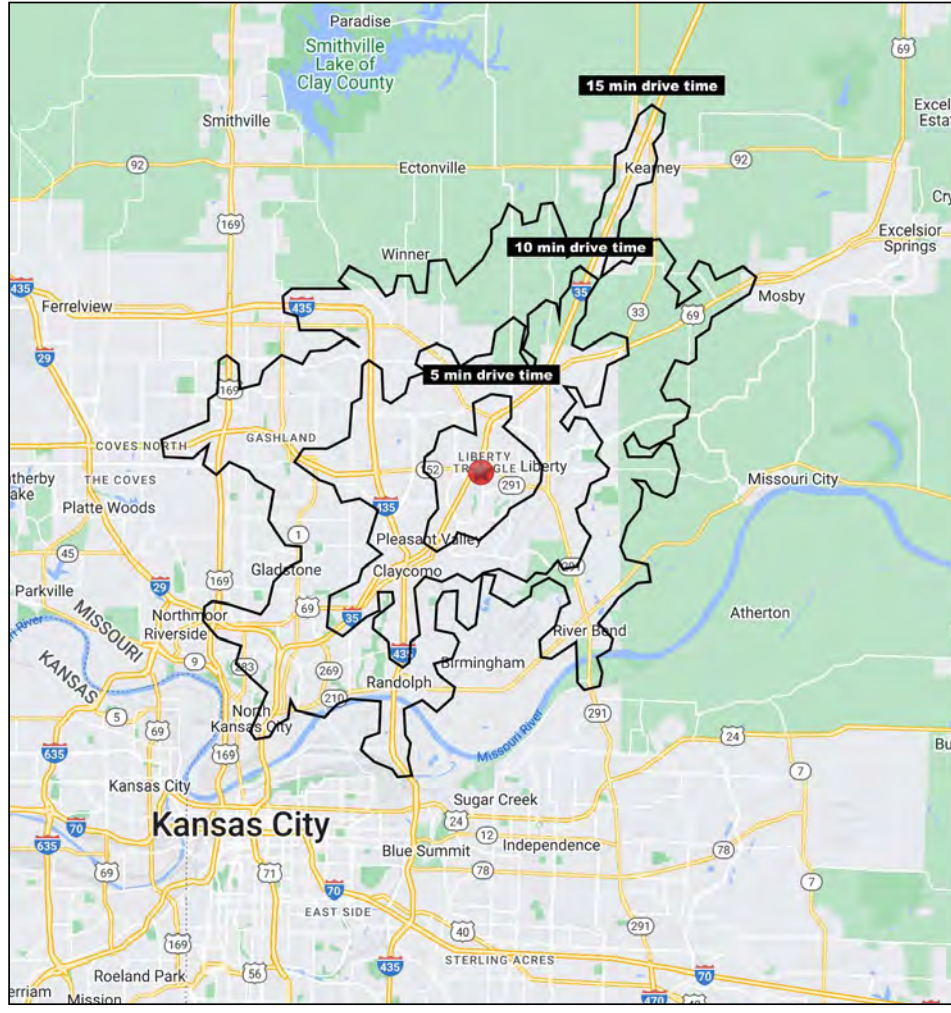




SHOPS AT LIBERTY COMMONS

I-35 & 152 Highway (SEQ), Liberty, Missouri

5-10-15 MINUTE DRIVE TIME MAP & DEMOS



103 S Stewart Rd Liberty, MO 64068	5 min drive time	10 min drive time	15 min drive time
Population			
2022 Estimated Population	22,221	74,221	170,888
2027 Projected Population	22,858	77,066	180,911
2020 Census Population	21,595	73,326	167,931
2010 Census Population	18,326	62,367	145,094
Projected Annual Growth 2022 to 2027	0.6%	0.8%	1.2%
Historical Annual Growth 2010 to 2022	1.8%	1.6%	1.5%
2022 Median Age	38.5	35.9	37.1
Households			
2022 Estimated Households	8,820	28,009	67,498
2027 Projected Households	9,243	29,614	72,804
2020 Census Households	8,526	27,462	65,808
2010 Census Households	7,085	22,975	56,781
Projected Annual Growth 2022 to 2027	1.0%	1.1%	1.6%
Historical Annual Growth 2010 to 2022	2.0%	1.8%	1.6%
Race and Ethnicity			
2022 Estimated White	84.0%	82.1%	79.1%
2022 Estimated Black or African American	6.3%	6.8%	8.8%
2022 Estimated Asian or Pacific Islander	2.6%	3.3%	3.6%
2022 Estimated American Indian or Native Alaskan	0.3%	0.3%	0.4%
2022 Estimated Other Races	6.8%	7.5%	8.2%
2022 Estimated Hispanic	6.1%	6.9%	7.8%
Income			
2022 Estimated Average Household Income	\$93,466	\$90,853	\$85,815
2022 Estimated Median Household Income	\$79,978	\$87,989	\$81,098
2022 Estimated Per Capita Income	\$37,210	\$34,429	\$33,977
Education (Age 25+)			
2022 Estimated Elementary (Grade Level 0 to 8)	2.1%	2.3%	2.1%
2022 Estimated Some High School (Grade Level 9 to 11)	1.8%	3.1%	4.3%
2022 Estimated High School Graduate	25.9%	26.0%	26.7%
2022 Estimated Some College	21.2%	21.4%	21.9%
2022 Estimated Associates Degree Only	8.4%	8.6%	8.6%
2022 Estimated Bachelors Degree Only	27.1%	25.3%	23.7%
2022 Estimated Graduate Degree	13.6%	13.2%	12.7%
Business			
2022 Estimated Total Businesses	1,117	1,934	4,332
2022 Estimated Total Employees	12,402	22,785	51,501
2022 Estimated Employee Population per Business	11.1	11.8	11.9
2022 Estimated Residential Population per Business	19.9	38.4	39.5

©2023, Sites USA, Chandler, Arizona, 480-491-1112 Demographic Source: Applied Geographic Solutions 11/2022, TIGER Geography - RS1

