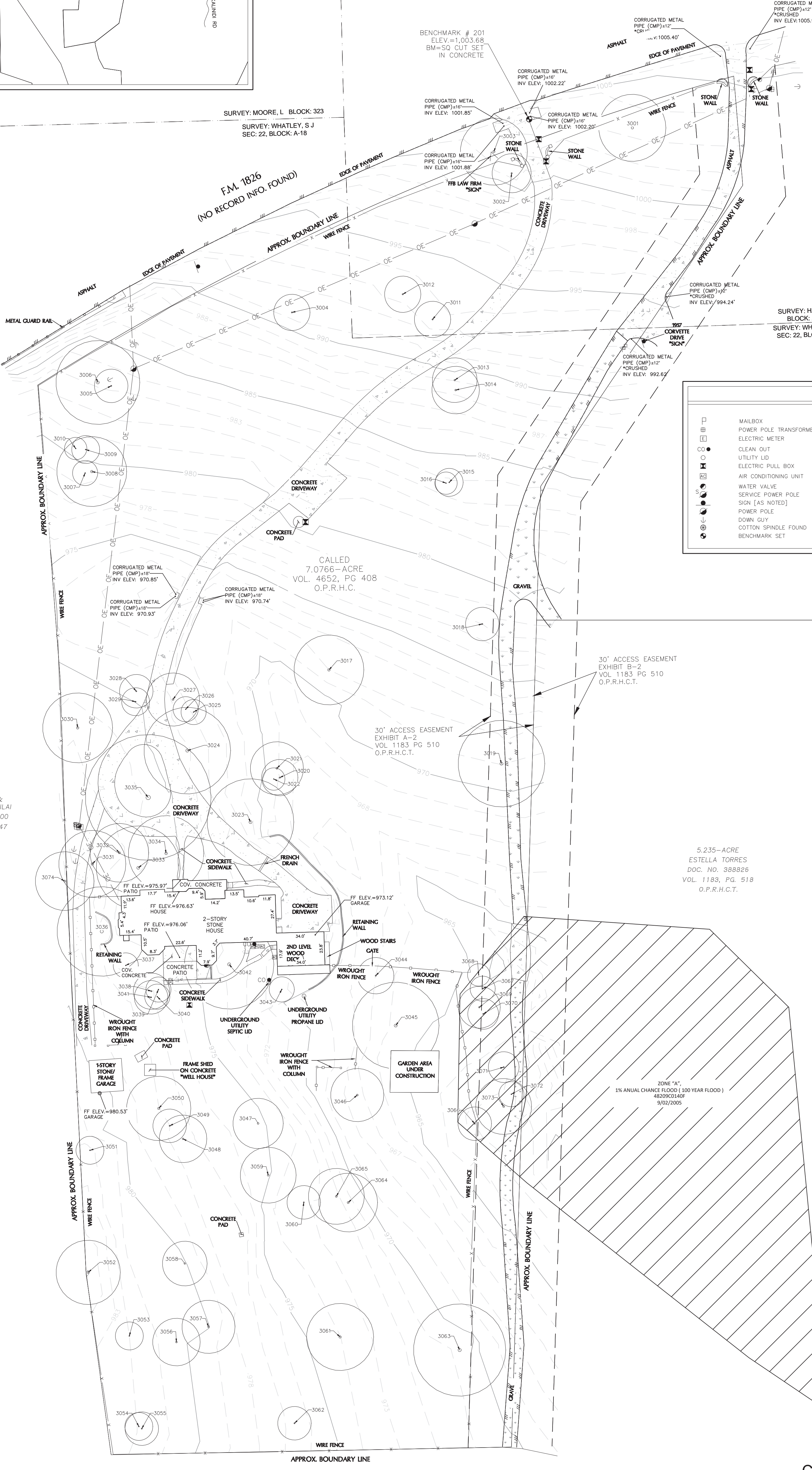


CONTROL NOTES:

HORIZONTAL COORDINATES ARE BASED ON THE TEXAS COORDINATE SYSTEM, SOUTH CENTRAL ZONE (4204), NORTH AMERICAN DATUM OF 1983, OBSERVED USING THE LEICA SMARTNET NETWORK. ALL COORDINATES AND DISTANCES ARE GRID VALUES AND MAY BE CONVERTED TO SURFACE BY DIVIDING BY THE SURFACE ADJUSTMENT FACTOR OF 1.00008. UNITS: U.S. SURVEY FEET.

ELEVATIONS ARE BASED ON THE NORTH AMERICAN VERTICAL DATUM OF 1988, USING GEOID 12B, OBSERVED USING THE LEICA SMARTNET NETWORK.

BM 201: ELEVATION = 1,003.68, SQUARE CUT SET ON THE RIGHT SIDE OF A CULVERT, APPROXIMATELY 12.40 FEET SOUTH PAVEMENT OF FM 1826 AND 15.88 FEET FROM A ELECTRIC PULL BOX ON THE ENTRANCE OF A CONCRETE DRIVEWAY.



LEGEND

□	MAILBOX	DOC. NO.	DOCUMENT NUMBER
⊕	POWER POLE TRANSFORMER	VOL.	VOLUME
⊖	ELECTRIC METER	PG.	PAGE
○	CLEAN-OUT	O.P.R.H.C.T.	OFFICIAL PUBLIC RECORDS, HAYS COUNTY, TEXAS
○	UTILITY LID		
⊗	ELECTRIC PULL BOX		
⊕	AIR CONDITIONING UNIT	---	EXISTING WIRE FENCE
⊖	WATER VALVE	---	GUARD POST FENCE
⊕	SERVICE POWER POLE	---	EXISTING PROPERTY LINE
⊖	DOWN GUY	---	EXISTING EASEMENT
⊗	COTTON SPINDLE FOUND	---	OE OVERHEAD ELECTRIC
⊕	BENCHMARK SET	---	EXISTING WIRE FENCE
		---	EDGE OF PAVEMENT
		---	APPROXIMATE SURVEY LINE

TREE TABLE

NUMBER	TRUNK(IN)	SPECIES	CANOPY(FT)	MULTI-TRUNK(IN)
3001	24	LIVE OAK	48	13, 12 & 10
3002	14	LIVE OAK	28	---
3003	24	LIVE OAK	48	17 & 14
3004	13	LIVE OAK	26	10 & 6
3005	12	LIVE OAK	24	8 & 8
3006	30	LIVE OAK	60	22 & 19
3007	9	LIVE OAK	18	---
3008	25	LIVE OAK	50	11, 9, 9 & 8
3009	10	LIVE OAK	20	---
3010	8	LIVE OAK	16	---
3011	13	RED OAK	26	10 & 7
3012	13	RED OAK	26	9 & 8
3013	16	LIVE OAK	32	---
3014	17	LIVE OAK	34	---
3015	10	LIVE OAK	20	8 & 4
3016	8	LIVE OAK	16	---
3017	25	LIVE OAK	50	14, 13 & 9
3018	12	LIVE OAK	24	8 & 7
3019	31	LIVE OAK	62	---
3020	13	LIVE OAK	26	---
3021	19	LIVE OAK	38	---
3022	8	LIVE OAK	16	---
3023	31	LIVE OAK	62	62, 24 & 15
3024	31	LIVE OAK	62	62, 24 & 16
3025	9	LIVE OAK	18	---
3026	9	LIVE OAK	18	---
3027	19	LIVE OAK	38	---
3028	12	LIVE OAK	24	9 & 6
3029	10	LIVE OAK	20	---
3030	25	LIVE OAK	50	---
3031	24	LIVE OAK	48	---
3032	21	LIVE OAK	42	---
3033	30	LIVE OAK	60	---
3034	27	LIVE OAK	54	---
3035	45	LIVE OAK	90	---
3036	32	LIVE OAK	64	---
3037	9	LACEBARK ELM	18	---
3038	13	LIVE OAK	26	9 & 8
3039	9	LIVE OAK	18	---
3040	9	LIVE OAK	18	---
3041	12	LIVE OAK	24	8 & 7
3042	32	LIVE OAK	64	25 & 17
3043	9	LIVE OAK	18	---
3044	13	LIVE OAK	26	---
3045	31	LIVE OAK	62	19, 14 & 10
3046	19	LIVE OAK	38	12, 8 & 7
3047	18	LIVE OAK	36	---
3048	17	LIVE OAK	34	---
3049	12	LIVE OAK	24	---
3050	23	LIVE OAK	46	16 & 14
3051	10	LIVE OAK	20	---
3052	23	LIVE OAK	46	---
3053	10	LIVE OAK	20	---
3054	10	LIVE OAK	20	---
3055	12	LIVE OAK	24	---
3056	17	LIVE OAK	34	14 & 5
3057	19	LIVE OAK	38	16 & 5
3058	16	LIVE OAK	32	---
3059	20	LIVE OAK	40	---
3060	12	LIVE OAK	24	---
3061	24	LIVE OAK	48	---
3062	12	LIVE OAK	24	9 & 6
3063	32	LIVE OAK	64	20, 14 & 7.7
3064	21	LIVE OAK	42	---
3065	20	LIVE OAK	40	---
3066	12	LIVE OAK	24	---
3067	9	LIVE OAK	18	---
3068	8	CEDAR ELM	16	---
3069	15	LIVE OAK	30	---
3070	11	LIVE OAK	22	---
3071	11	LIVE OAK	22	---
3072	9	LIVE OAK	18	---
3073	20	LIVE OAK	40	10, 10 & 9
3074	21	LIVE OAK	42	---

SURVEY NOTES:
 ONLY ABOVE GROUND VISIBLE UTILITIES WERE LOCATED FOR THIS SURVEY. TEXAS 811/ONE CALL TICKET WAS SUBMITTED, NO MARKINGS WERE OBSERVED.
 THIS SURVEY WAS PERFORMED WITHOUT THE BENEFIT OF A TITLE COMMITMENT, EASEMENTS OR OTHER MATTERS OF RECORD MY EXIST WHERE NONE ARE SHOWN.

TREE SURVEY NOTES:
 THE CANOPY/ROOT ZONE (RZ) SHOWN HEREON WERE DETERMINED BY USING THE FORMULA OF TREE DIAMETER (IN INCHES) X 2 = CANOPY/ROOT ZONE (IN FEET). MULTI-TRUNK TREE DIAMETER WAS DETERMINED BY THE SUM OF THE PRIMARY TRUNK DIAMETER (IN INCHES) PLUS HALF THE DIAMETER (IN INCHES) OF EACH ADDITIONAL TRUNK.
FLOODPLAIN NOTE:
 A PORTION OF THIS PROPERTY (AS SHOWN HEREON) IS LOCATED WITHIN ZONE "A", AS SHOWN ON F.I.R.M. PANEL NO. N048209C0140F COUNTY, TEXAS DATED SEPTEMBER 02, 2005.
 ZONE "A" IS AN AREA INUNDATED BY 1% ANNUAL CHANCE FLOODING, FOR WHICH NO BASE FLOOD ELEVATION HAVE BEEN DETERMINED.

GARRETT CAVAIUOLO, DATE 04/22/2020
 REGISTERED PROFESSIONAL LAND SURVEYOR
 TEXAS REGISTRATION NO. 6714
 DOUCET & ASSOCIATES
 GCVAIUOLO@DOUCETENGINEERS.COM



CATEGORY 6, CONDITION II TOPOGRAPHIC SURVEY

CITY OF KYLE, HAYS COUNTY, TEXAS

DA DOUCET & ASSOCIATES
 Civil Engineering - Planning - Geospatial
 7401 B. Highway 71 W, Suite 160
 Austin, Texas 78735, Phone: (512)-583-2600
 www.doucetengineers.com
 TBPE Firm No.: 10105800

Date:	04/22/2020
Scale:	1" = 40'
Drawn by:	JRT
Reviewed by:	GC
Project:	2077-001
Sheet:	1 OF 1
Field Book:	527
Party Chief:	ADM/BSS/PAC
Survey Date:	03/31/2020