



— DOWNTOWN DENVER — CLASS B OFFICE — 17 STORIES

Trinity Place

1801 BROADWAY · DENVER, COLORADO 80202

17
STORIES

28
SUITES AVAILABLE

1,061–12,174
SF PER SUITE

From \$8
PER SF / YEAR

Move-In
READY · FULL BUILD-OUTS

• ABOUT THE BUILDING

Denver's Premier Downtown Address

Trinity Place at 1801 Broadway sits at the heart of Denver's Central Business District, offering 28 fully built-out office suites across floors 2 through 17. Flexible configurations range from intimate executive suites to full-floor opportunities of 11,000+ SF, delivering immediate occupancy, refined finishes, and unobstructed mountain and city views.

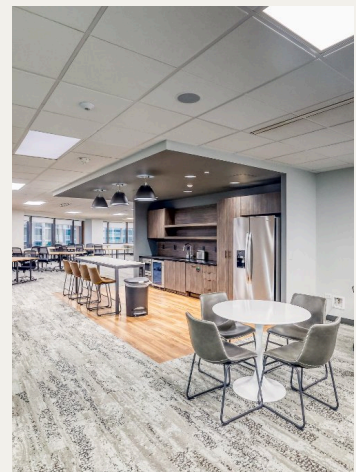
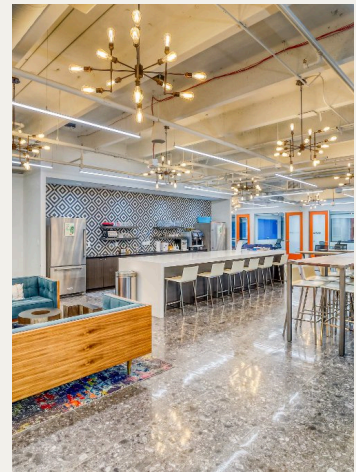
• FLOORS 4 & 5 • CO-WORKING INSIDE TRINITY PLACE

GROW HOUSE

Two full floors of co-working space in the heart of Denver's Central Business District, built for builders, startups, and growing teams.

\$140 /mo · Hot Desks | \$500 /mo · Private Offices

- Full build-outs, move-in ready
- Mountain & city views
- Shared conference rooms
- Steps from 16th Street Mall
- 24/7 building access & security
- Kitchenettes in most suites
- Underground parking available
- On-site restaurant & dining
- High-speed fiber connectivity
- RTD Light Rail access nearby
- Suites from 1,061 to 12,174 SF
- Flexible lease terms available



• CURRENT AVAILABILITY

Available Spaces

28 suites · Floors 2–17 · Full & partial build-outs · Immediate occupancy

FL	SUITE	SQ FT	\$/SF/YR	KEY FEATURES
2	200A	2,532	\$25 FSG	6–8 pvt offices · open floor plan · full build-out
6	600A	2,673	\$25	2 pvt offices · conf. room · kitchenette · ~11 workstations
6	600B	3,346	\$25	6 pvt offices · conf. room · kitchenette · ~13 workstations
7	700	6,401	\$25	10 pvt offices · 2 conf. rooms · reception · kitchenette · server closet
7	720	5,782	\$25	9 pvt offices · 2 conf. rooms · 2 kitchenettes · ~19 workstations
8	800	12,174	\$25	FULL FLOOR 24 pvt offices · 2 conf. rooms · reception · kitchenette
9	900	4,135	\$20	7 pvt offices · conf. room · reception · kitchenette
9	900A	3,311	\$25	6 pvt offices · conf. room · kitchenette · ~8–9 workstations
9	920	2,892	\$25	5 pvt offices · professional build-out
10	1000A	1,819	\$25	3 pvt offices · conf. room · kitchenette · ~6–7 workstations
10	1000C	1,978	\$25	3 pvt offices · conf. room · kitchenette · ~6–7 workstations
10	1000D	1,978	\$25	4 pvt offices · conf. room · kitchenette · ~6 workstations
10	1050	1,962	\$25	4–5 offices · conf. room · kitchenette · open work area
11	1100	3,155	\$25	6 pvt offices · conf. room · kitchenette · server room
11	1125	1,848	\$15 FSG	2–3 pvt offices · efficient small-format suite
11	1175	2,686	\$15	8 pvt offices · kitchenette · storage room · built-in cabinets
12	1200A	4,425	\$25	7 pvt offices · conf. room · kitchenette · ~10 open desks
12	1200B	3,814	\$25	6 pvt offices · conf. room · kitchenette · ~10–12 workstations
13	1300	11,787	\$20	FULL FLOOR 3 conf. rooms · 9 suites · 9 phone rooms · 2 kitchenettes · ~30 workstations
14	1400	4,845	\$15	8 pvt offices · 2 conf. rooms · break room · server room
14	1410	1,061	\$15	2 pvt offices · entry room
14	1440	6,251	\$15	8 pvt offices · 2 conf. rooms · 2 kitchenettes · 2 storage rooms
15	1500C	1,516	\$20	2 pvt offices · conf. room · kitchenette · ~7 workstations
15	1500E	1,579	\$24	3 pvt offices · conf. room · kitchenette · ~8 workstations
16	1600	4,126	\$8	Ready for Build Out
16	1620	7,612	\$20	12 pvt offices · conf. room · reception · kitchenette/break room
17	1700A	5,728	\$29	TOP FLOOR 5 pvt offices · conf. room · kitchenette · ~24 workstations
17	1700B	4,234	\$29	TOP FLOOR 3 pvt offices · conf. room · kitchenette · ~15 workstations



UNDERGROUND
PARKING



ON-SITE
RESTAURANT



MOUNTAIN
& CITY VIEWS



SHARED CONF.
ROOMS



RTD LIGHT
RAIL ACCESS



24/7 ACCESS
& SECURITY



HIGH-SPEED
FIBER



GROW HOUSE
CO-WORKING

• LEASING INQUIRIES

Schedule a Tour

All 28 suites are immediately available and move-in ready with full build-outs in place. Contact Roberto directly to schedule a private showing or discuss your space requirements.

Roberto Seidita
LEASING AGENT · HOMELAND

(720) 422-0225

Roberto@homeland.com