

THE PRESS BUILDING

444 Clinchfield Street
Kingsport, TN 37660

Location

At the intersection of Clinchfield Street and W Sullivan Street in Downtown Kingsport

Available for Lease

Suite 202: 4,820 RSF medical office
\$17.32/SF/year NNN

Suite 203: 5,012 RSF former breast center
\$17.32/SF/year NNN

Highlights

All furniture and equipment available

Direct access from 2nd level parking lot

Proximal to Holston Valley Medical Center, Eastman & Meadowview Convention Center

Suite 202

- Large waiting/reception area, 5 offices, 4 exam rooms w/sinks & cabinets, lab, nurse's station, 3 restrooms, server room and closets

Suite 203

- Large waiting room w/coffee bar, 4 reception windows, 3 offices, break room, conference room, 5 restrooms, closets, sub-waiting area w/ changing rooms and lockers

- DEXA room w/scanner, mammography room w/x-ray, ultrasound room w/ultrasound

Demographics

(2024 Est.)	3 mile	5 mile	10 mile
Population	35,511	64,652	123,738
Median HH Income	\$43,319	\$48,571	\$56,720
Median Age	43.9	44.8	45.9

Contact

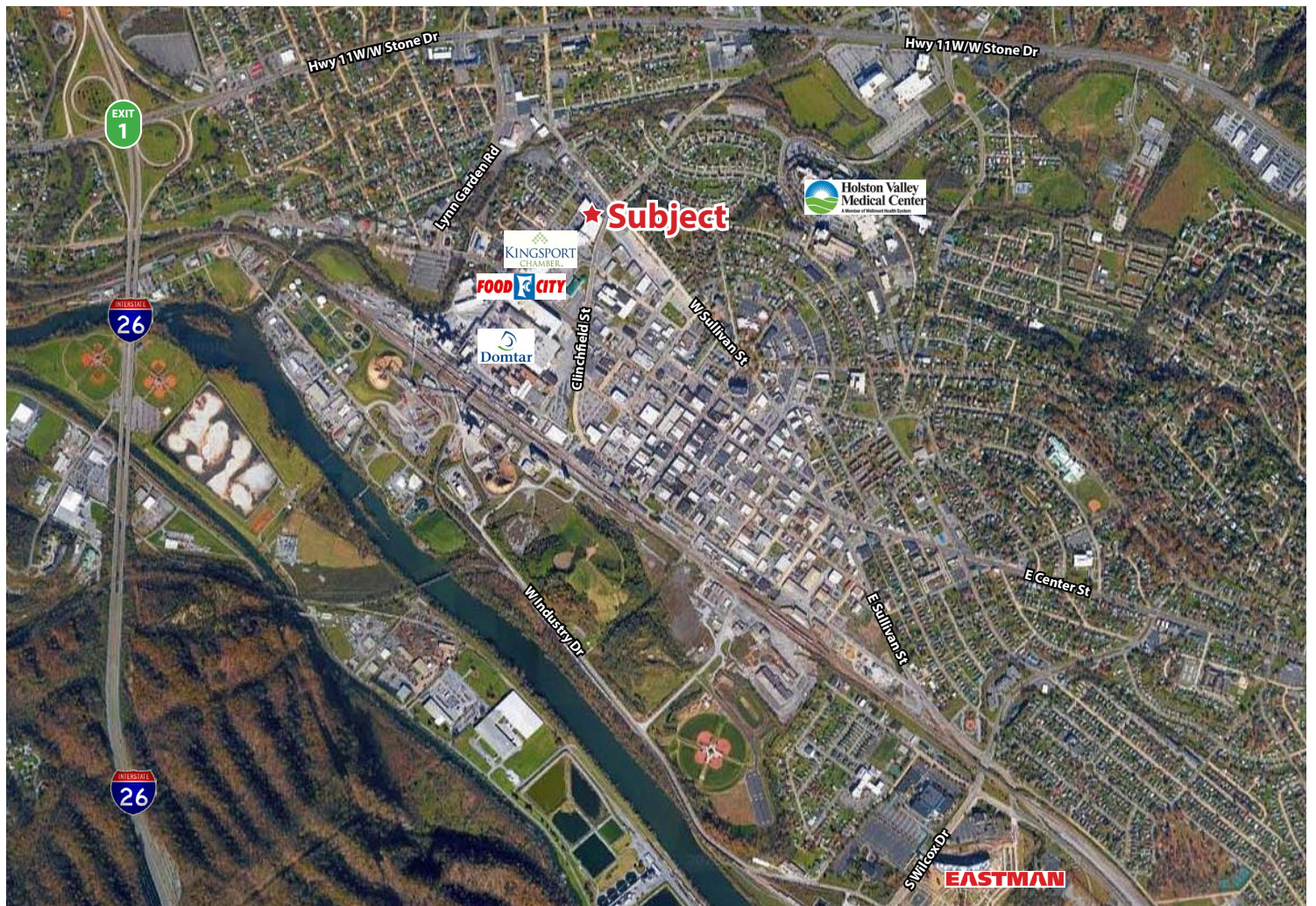
John Speropulos, CCIM, SIOR
john@mitchcox.com

Marc Murphy, CCIM
mmurphy@mitchcox.com

📞 423-282-6582 | 📠 423-282-5903
www.mitchcox.com

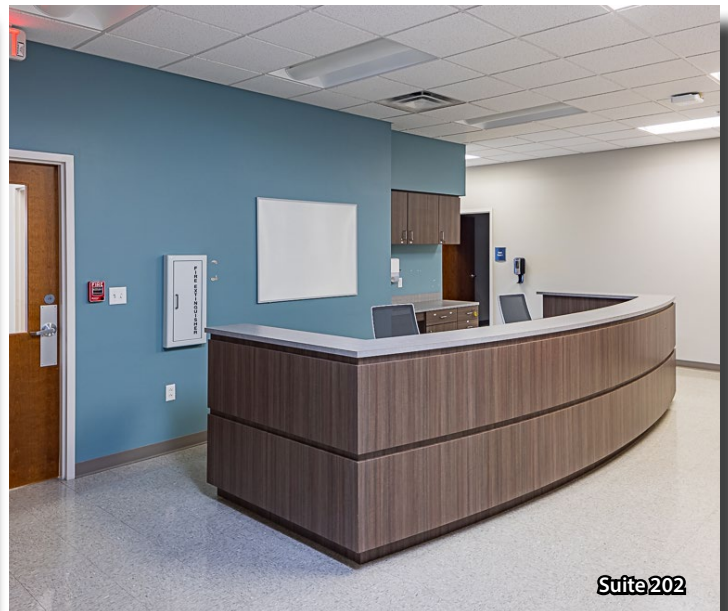


MITCH COX
REALTOR, INC.





Suite 202



Suite 202



Suite 202



Suite 202



Suite 202



Suite 202



Suite 203



Suite 203



Suite 203



Suite 203



Suite 203



Suite 203



MITCH COX
REALTOR, INC.

2304 Silverdale Drive, Suite 200, Johnson City, TN 37601
423-282-6582 (o) 423-282-5903 (f) www.mitchcox.com