

LAND FOR SALE 0.5+ ACRE

- **LOCATION**

Spring Cypress Road, just west of Interstate 45 and south of N. Grand Parkway W

- **SIZE**

±0.5 Acres

- **ACCESSIBILITY**

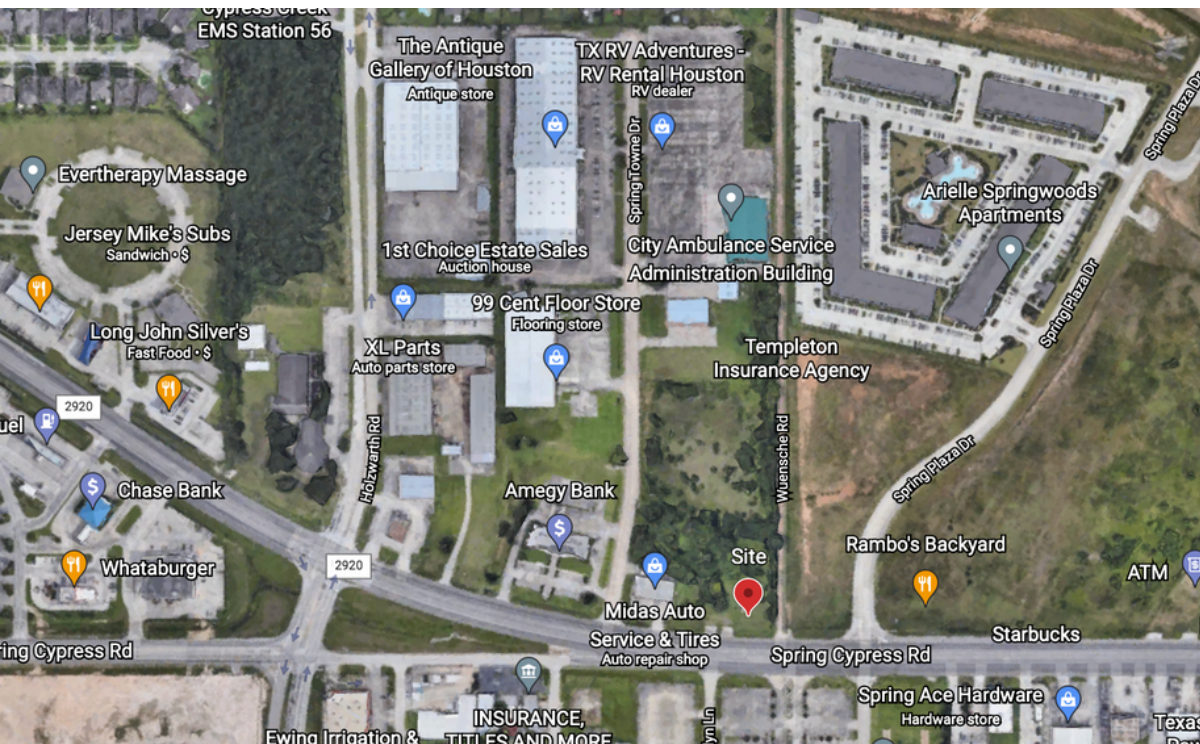
Quick access to I-45 and SH 99

"*ALL RENDERINGS/PICTURES SHOWN ARE FOR ILLUSTRATION PURPOSE ONLY.



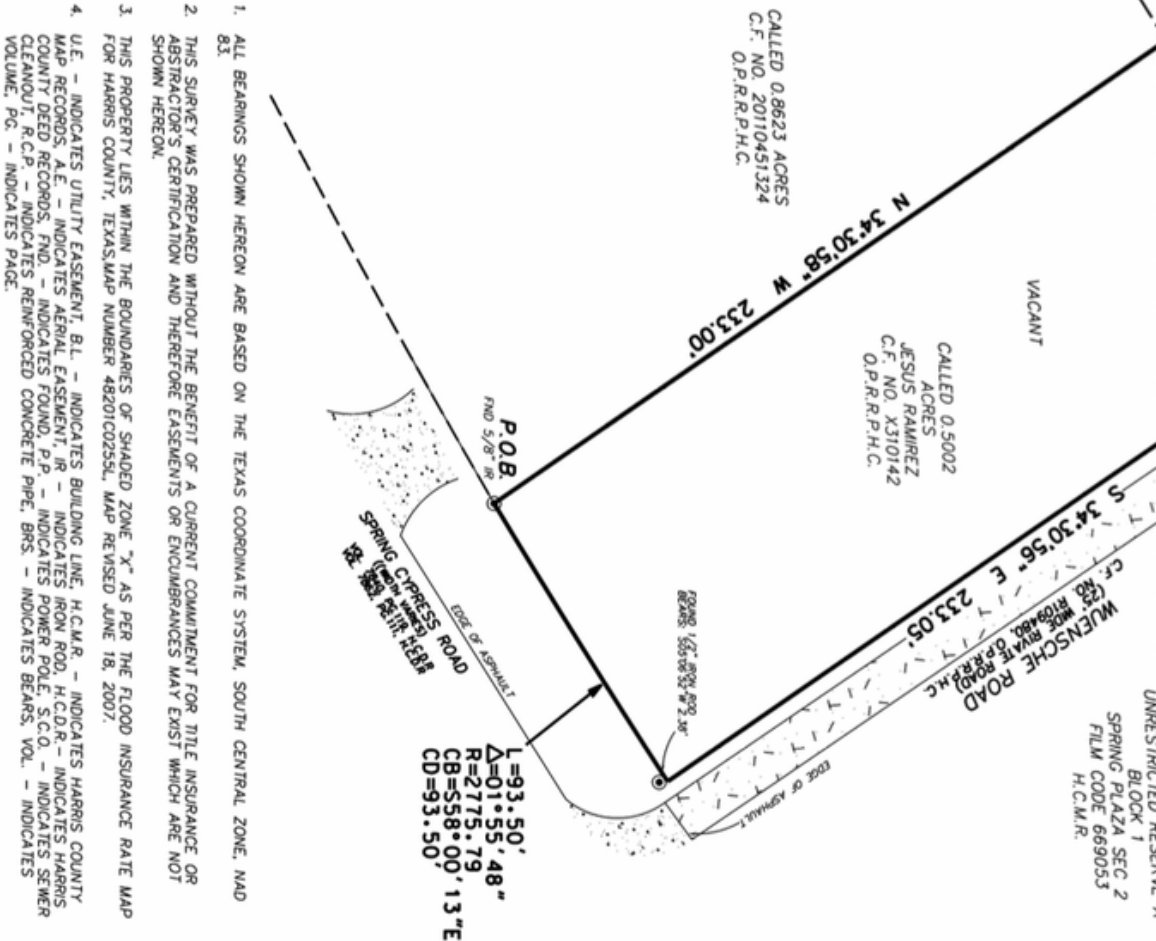
CALLED 4.686 ACRES
C.F. NO. 20120450144
O.P.R.R.P.H.C.

CALLED 0.8623 ACRES
C.F. NO. 20110451324
O.P.R.R.P.H.C.



	1-mile	3-miles	5-miles
Estimated Population	6,182	73,831	252,388
Household Income	\$115,887	\$106,520	\$99,787
Number of Households	2,147	25,391	87,984
Median Age	34.7	36.1	34.3

Property Survey





SURGE
REALTY



"*ALL RENDERINGS/PICTURES SHOWN ARE FOR ILLUSTRATION PURPOSE ONLY.



SURGE
REALTY

marielrodram@gmail.
com



"*ALL RENDERINGS/PICTURES SHOWN ARE FOR ILLUSTRATION PURPOSE ONLY.



SURGE
REALTY



"*ALL RENDERINGS/PICTURES SHOWN ARE FOR ILLUSTRATION PURPOSE ONLY.