



**FOR SALE | FOR LEASE**

**Broadway Business Park | Aledo, TX**

SOURCE: CO

*INGRESS & EGRESS FROM I-20E AND E BANKHEAD HWY  
No Restrictions. 2 Acre Lots. City of Willow Park Water & Sewer*

# SITE LOCATION & TRAFFIC



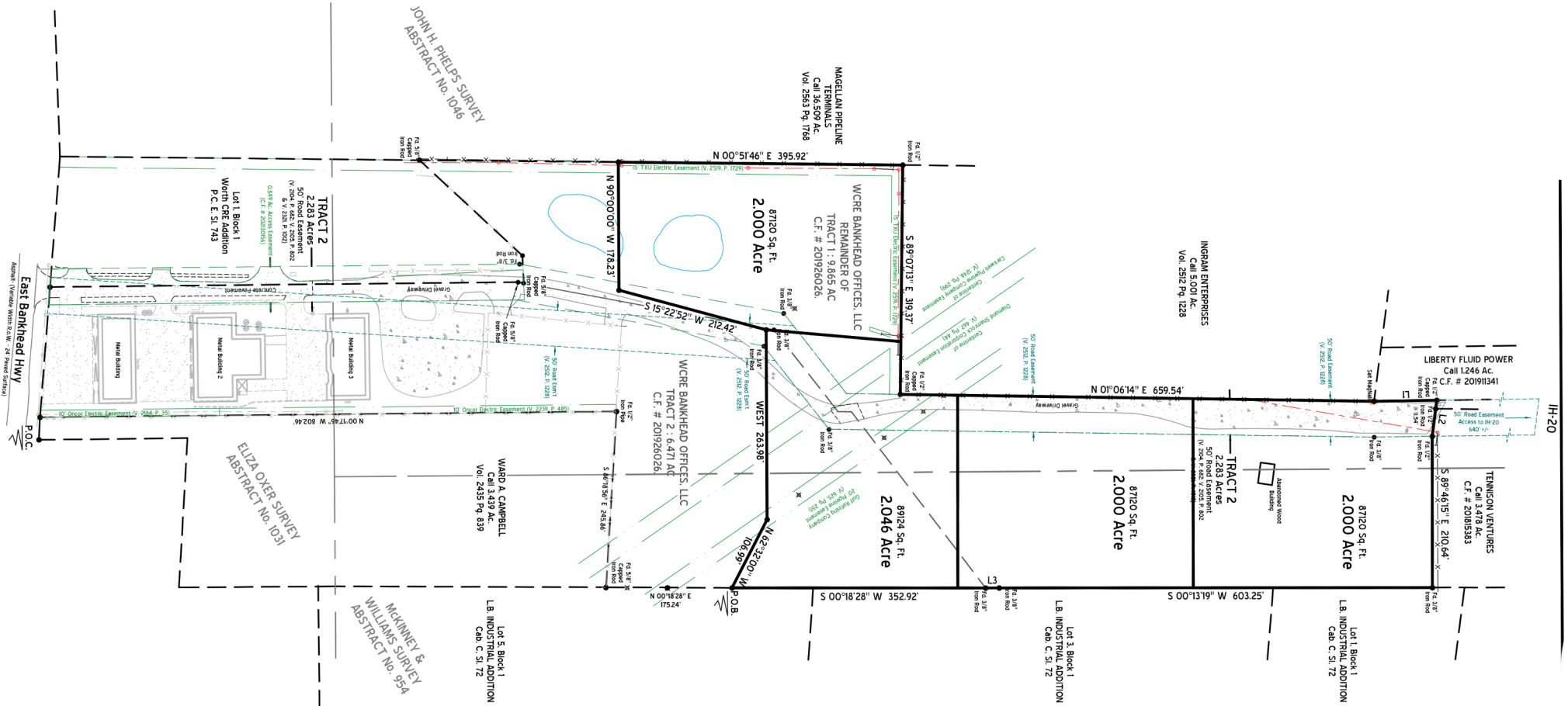
**BUILD TO SUIT**  
**4,000-25,000 SF FOR LEASE**

**BUILD TO SUIT**  
**4,000-25,000 SF FOR SALE**

Stacy Lynch  
stacy@lynchlegacyexp.com | 817.908.9567

Dani Doak  
dani@lynchlegacyexp.com | 817.734.4841

# SITE PLAN



Stacy Lynch  
[stacy@lynchlegacyexp.com](mailto:stacy@lynchlegacyexp.com) | 817.908.9567

Dani Doak  
[dani@lynchlegacyexp.com](mailto:dani@lynchlegacyexp.com) | 817.734.4841

# THE LEGACY COMMERCIAL TEAM

PROUDLY SERVING PARKER COUNTY FOR 50 YEARS

*Stacy Lynch*

**Stacy Lynch | Broker Associate  
Lynch Legacy Realty Group**

Stacy is a professional broker with 39 years of experience leading our team. A resident of Parker County for 50+ years and proud Aledo High School graduate, she has a true passion for this area. Stacy is rooted in relationships, both professional and personal. Her knowledge of Parker County and the school districts in the area stems from her history with her family's 50+ year old Parker County Real Estate company. Stacy's parents, Roy and Jan Lynch, started the company in 1972.

Stacy proudly serves as the Chairman of Board on the East Parker County Economic Development Committee and also the Branch to Hope Community Center.



*Dani Doak*

**Dani Doak | Broker Associate  
Lynch Legacy Realty Group**

Third generation of the Lynch family to be represented within our company. Dani is a leader for our team and her experience and passion allow her to keep us all moving in the right direction. She strives to keep the community as a focus and loves that "Home Town Texas" feeling that Parker County provides.

Dani obtained her Brokerage license in 2022 and serves as a mentor for eXp Realty. She is also active in the East Parker County Leadership Group.

EXPERTISE IN EVERY BRANCH

*We Live Here. Work Here. Play Here.*

Stacy Lynch

[stacy@lynchlegacyexp.com](mailto:stacy@lynchlegacyexp.com) | 817.908.9567

Dani Doak

[dani@lynchlegacyexp.com](mailto:dani@lynchlegacyexp.com) | 817.734.4841

