



265.4± ACRES, AVAILABLE FOR SALE

Ranch and Agricultural Land with Opportunities

6860 Los Osos Valley Road, San Luis Obispo, CA

Richardson | **Sotheby's**
INTERNATIONAL REALTY



Embrace the potential of this expansive 265-acre ranch, ideally located between San Luis Obispo and Los Osos, CA. With two parcels at your disposal, you can explore a variety of ventures, whether it's farming, establishing equestrian facilities, or creating your own private estate in one of the region's most sought-after areas. Experience the beauty of the Central Coast's Mediterranean climate, where you can enjoy the serenity of rural living without sacrificing proximity to shopping, beaches, and city amenities. The Los Osos Valley Road corridor is known for its soil quality and mild climate for year-round farming. The sloping northern section of the land provides a serene backdrop, and is currently utilized for cattle grazing. Rock outcrops, a seasonal creek, and views of nearby ranches and farms add natural beauty. With two parcels to work with, the possibilities are endless—create multiple homesites or expand agricultural facilities to suit your vision.

Property includes the following features:

- Functional manufactured home with room for homesteading expansion
- Multiple wells providing water supply for residential and agricultural use
- 7 Hoop houses on level ground (20' x 150')
- Series of hoop houses on the hill (20'x150')
- 4 metal outbuildings
- Large shop building (60'x40' - 2,400 SF) with two large roll-up doors and high ceilings
- 2 smaller shop buildings
- An office
- Large growing facility- 50,000 square feet equipped with power, fan connections, and irrigation lines
- Additional 20,000 SF growing structure

Don't miss your chance to own this versatile property in a stunning location. Contact today for a private tour. *Residents onsite, do not access without permission*



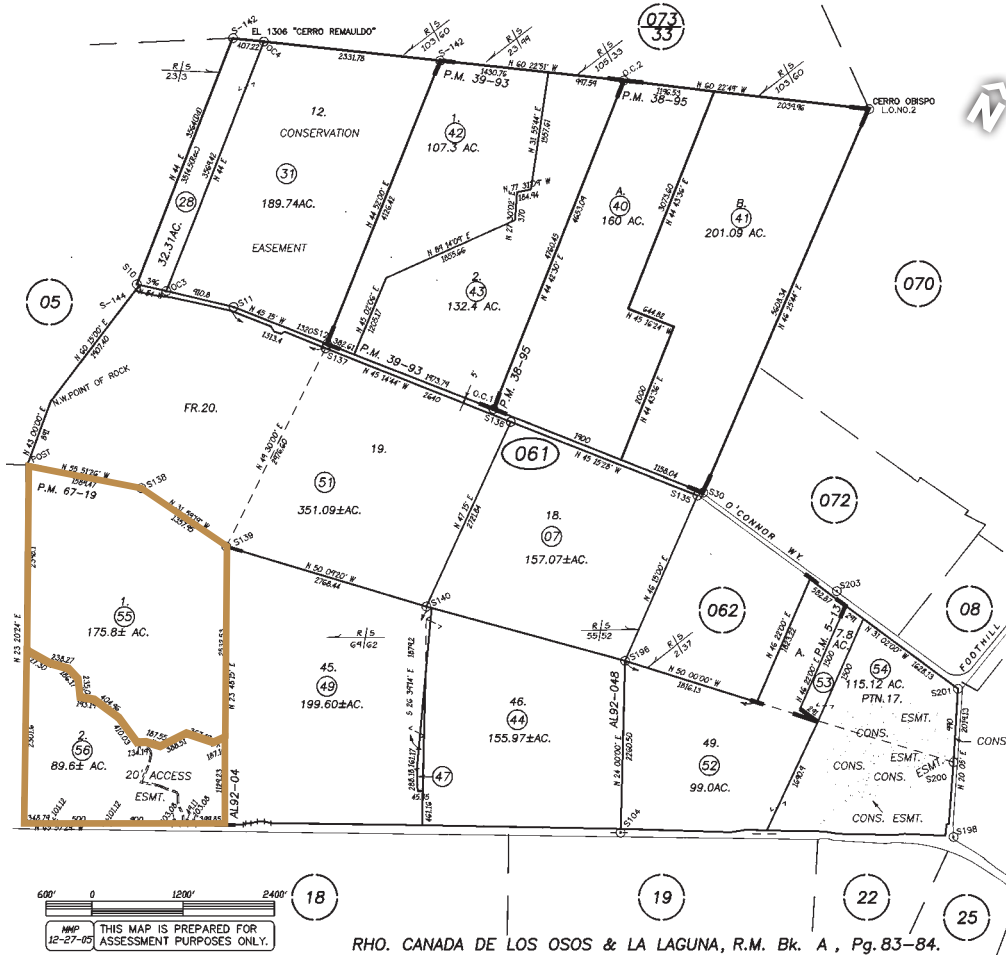
Ranch and Agricultural Land with Opportunities

6860 LOS OSOS VALLEY ROAD, SAN LUIS OBISPO, CA

Total Lot Size: 265.4± Acres

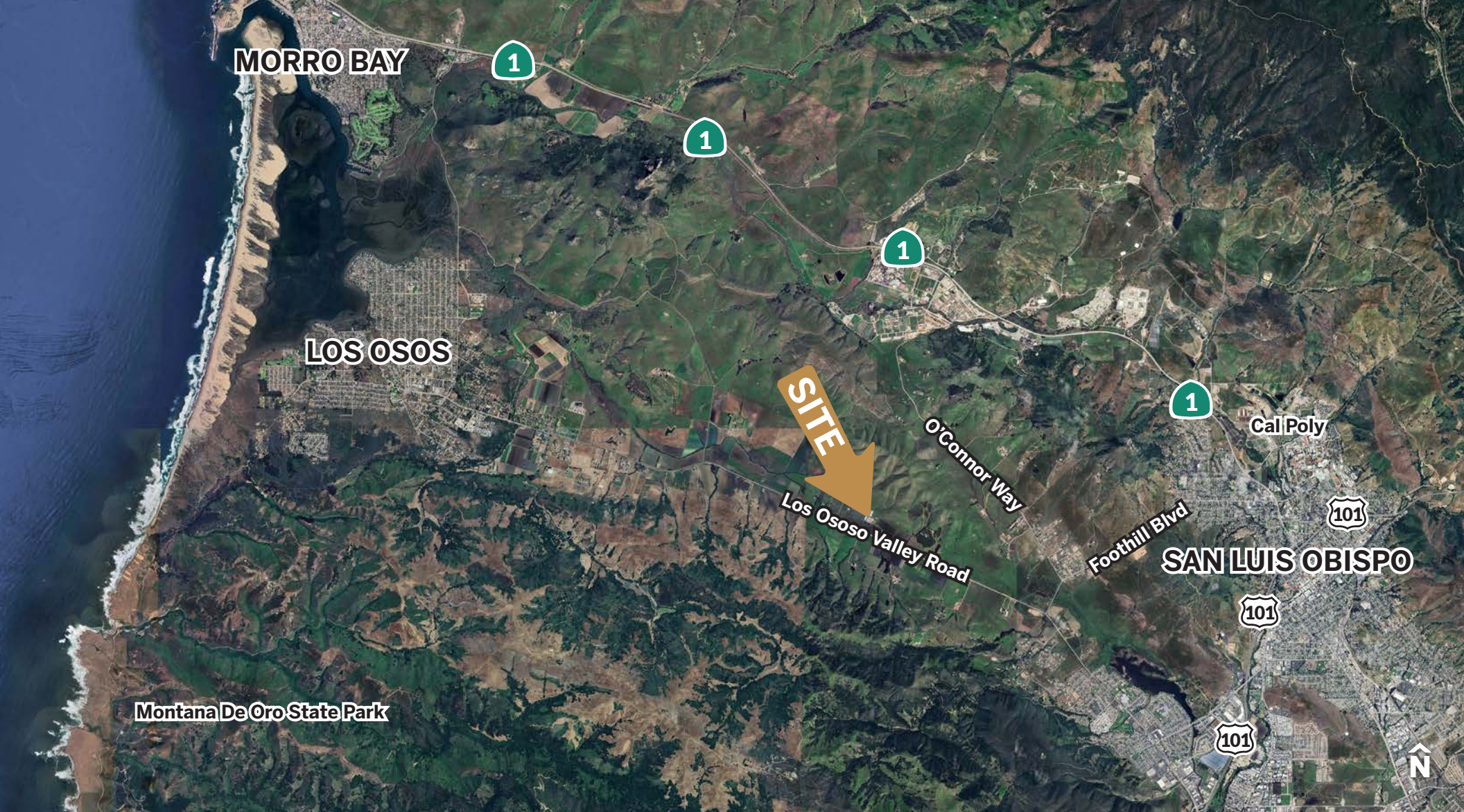
San Luis Obispo County APN's: 067-061-055 (175.8± Acs.) & 067-061-056 (89.6± Acs.)

Offered At: \$2,900,000



This parcel boundary graphic is a visual representation only and does not represent a legal document.

© 2024 Richardson Sotheby's International Realty. All rights reserved. Sotheby's International Realty® and the Sotheby's International Realty Logo are service marks licensed to Sotheby's International Realty Affiliates LLC and used with permission. Richardson Sotheby's International Realty fully supports the principles of the Fair Housing Act and the Equal Opportunity Act. Each office is independently owned and operated. Any services or products provided by independently owned and operated franchisees are not provided by, affiliated with or related to Sotheby's International Realty Affiliates LLC nor any of its affiliated companies. If your property is listed with a real estate broker, please disregard. It is not our intention to solicit the offerings of other real estate brokers. All data, including all measurements and calculations are obtained from various sources and has not and will not be verified by Broker. All information shall be independently reviewed and verified for accuracy.



Erik Berg-Johansen
 Realtor® | Lic # 02061242
 805.538.1828
 erik.bergjohansen@sothebysrealty.com



Paul Alandt
 Realtor® | License #02165650
 562.537.3108
 paul.alandt@sothebysrealty.com

Richardson Sotheby's International Realty
 711 Tank Farm Road # 100
 San Luis Obispo, California 93401
 richardsonsothebysrealty.com