

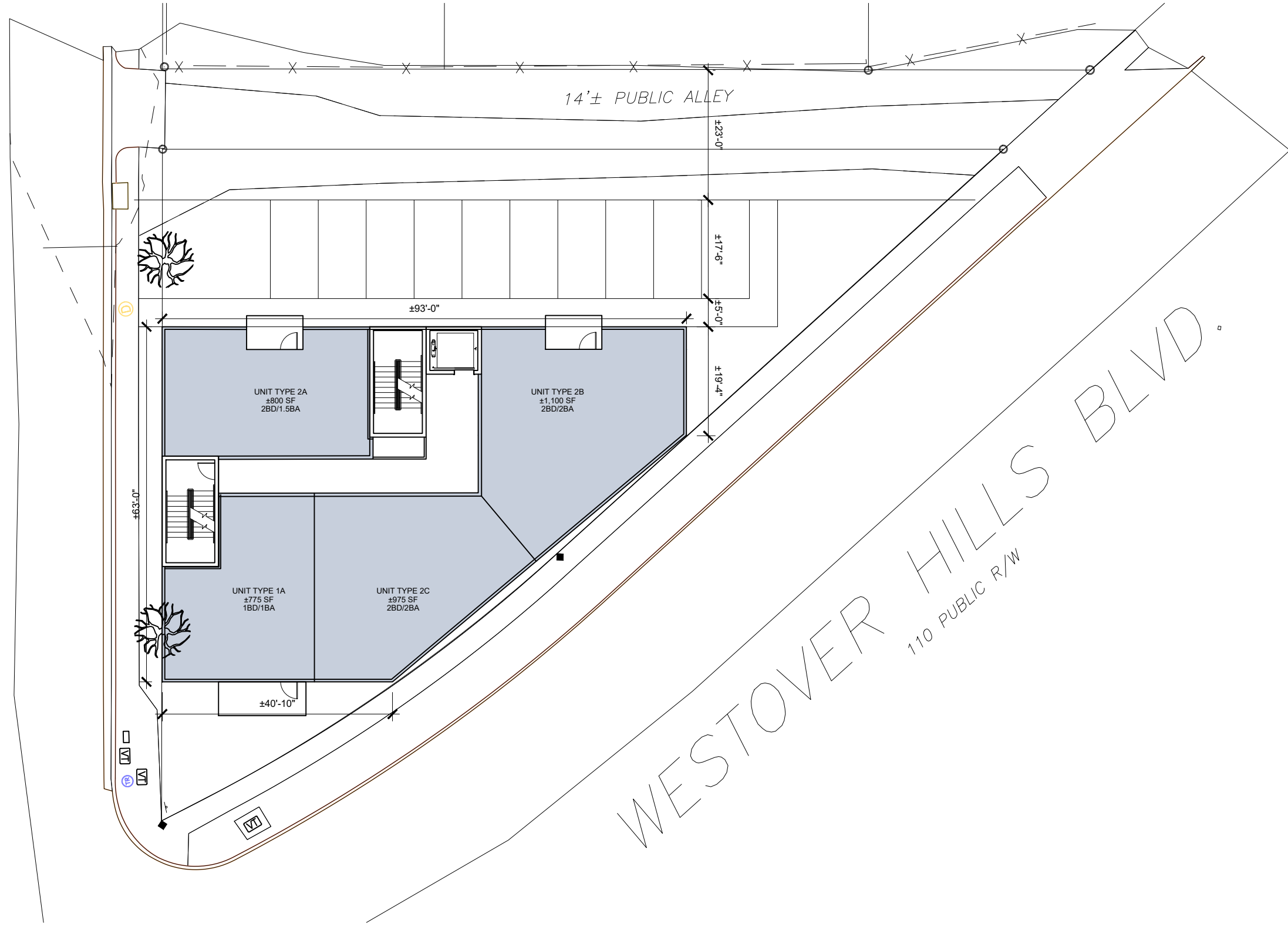
1ST FLOOR - LOBBY OPTION B

1" = 20'-0"

05.18.2023

1005 WESTOVER HILLS BLVD | MIXED USE BUILDING





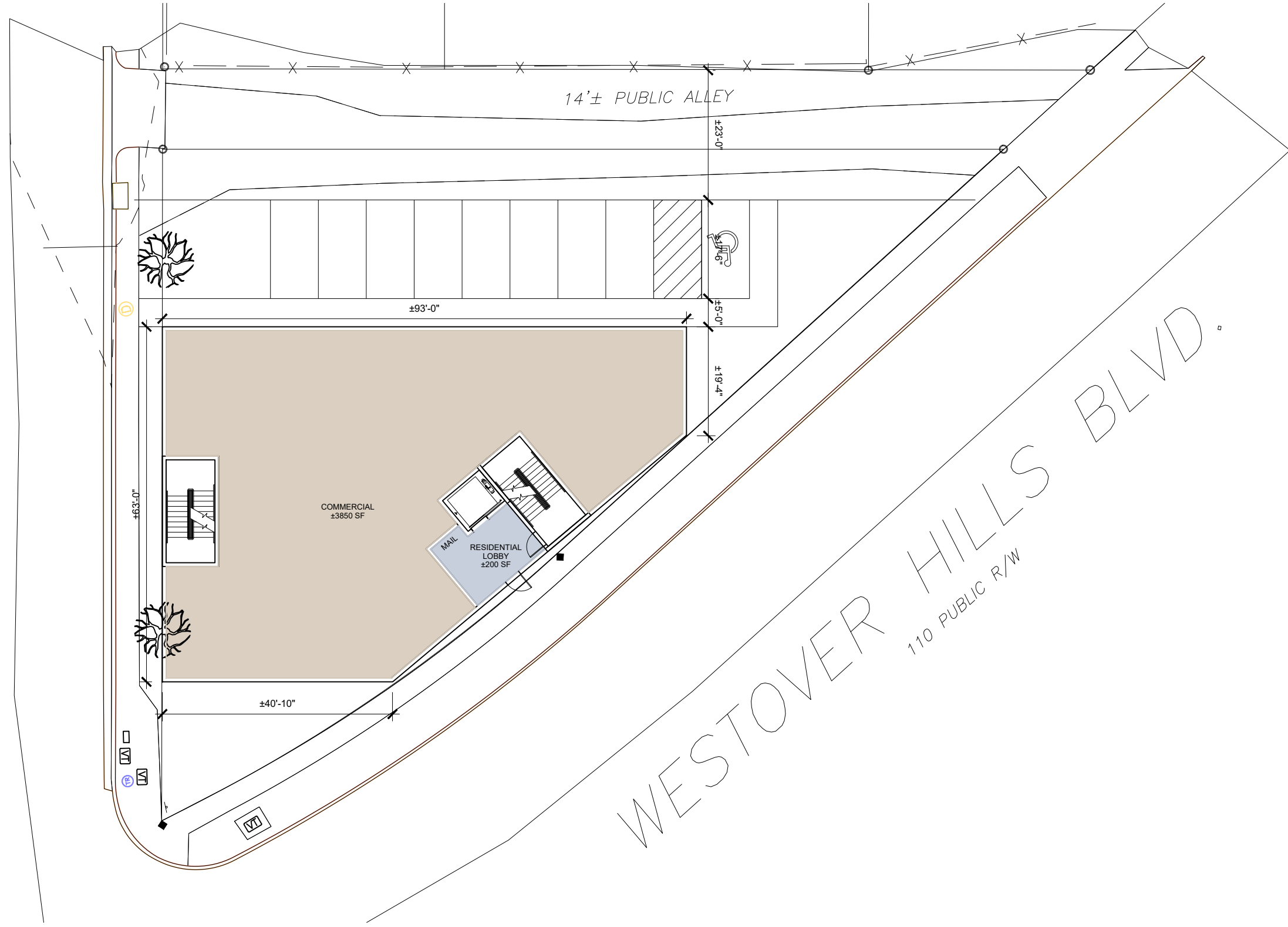
2ND FLOOR - LOBBY OPTION A

1" = 20'-0"

05.18.2023

1005 WESTOVER HILLS BLVD | MIXED USE BUILDING





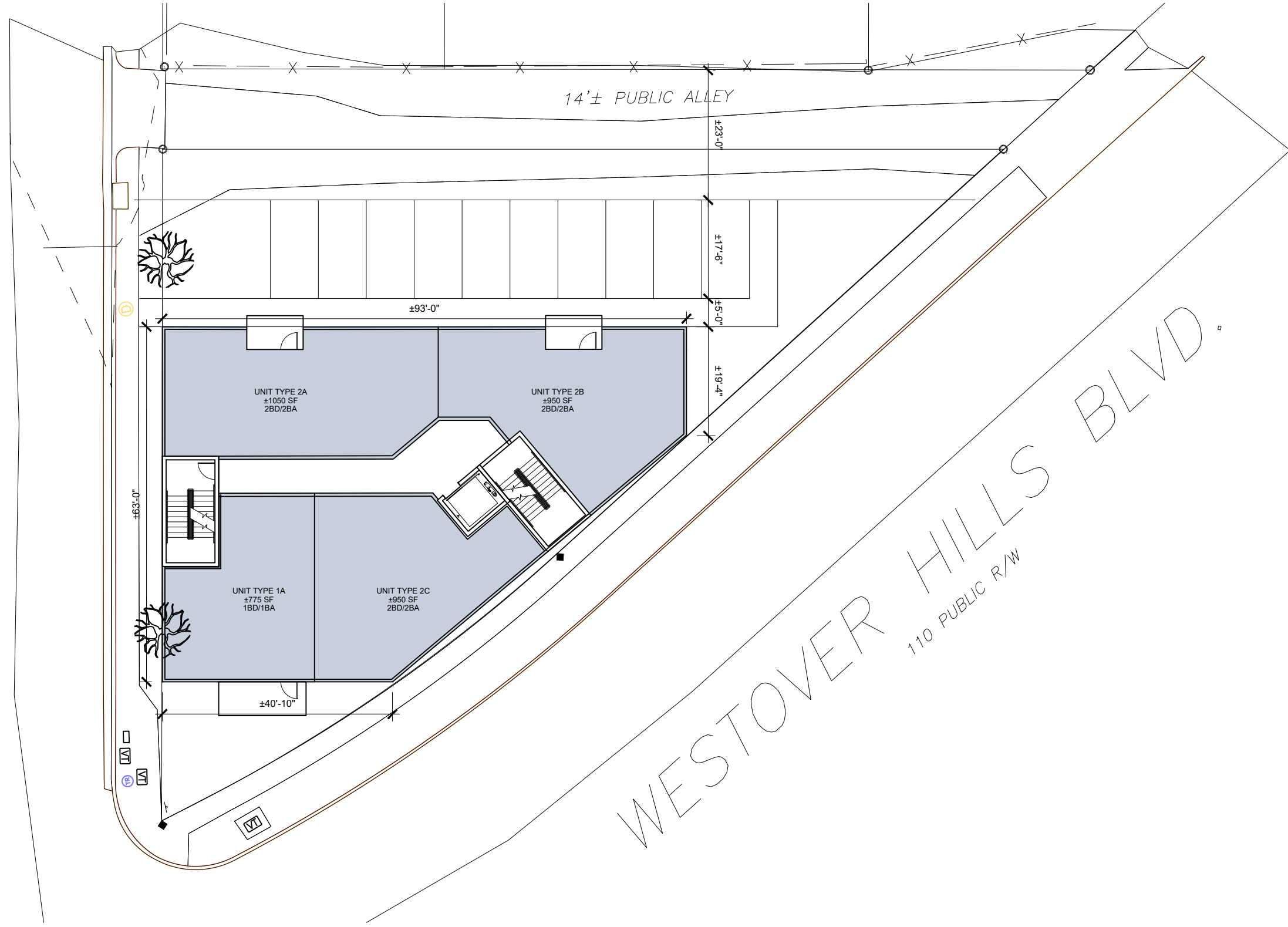
1ST FLOOR - LOBBY OPTION B

1" = 20'-0"

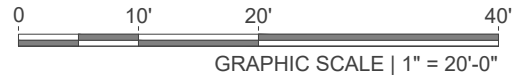
05.18.2023

1005 WESTOVER HILLS BLVD | MIXED USE BUILDING





WESTOVER HILLS BLVD  
110' PUBLIC R/W



2ND FLOOR - LOBBY OPTION B

1" = 20'-0"

05.18.2023

1005 WESTOVER HILLS BLVD | MIXED USE BUILDING

