

FOR LEASE OFFICE SPACE

\$26-28 sq ft
LEED Certified



3934 NE MLK BLVD
PORTLAND, OR 97212

THE HERITAGE BUILDING

Property Highlights

- LEED Gold sustainable bldg with geo-thermal heating & cooling
- Multi-step air filtration & heat recovery
- Harvested rainwater & all stormwater managed on-site



Property Amenities

- Bldg is elevator-served and ADA compliant
 - Covered bike parking
 - 18-space parking lot
- Shower/changing rooms



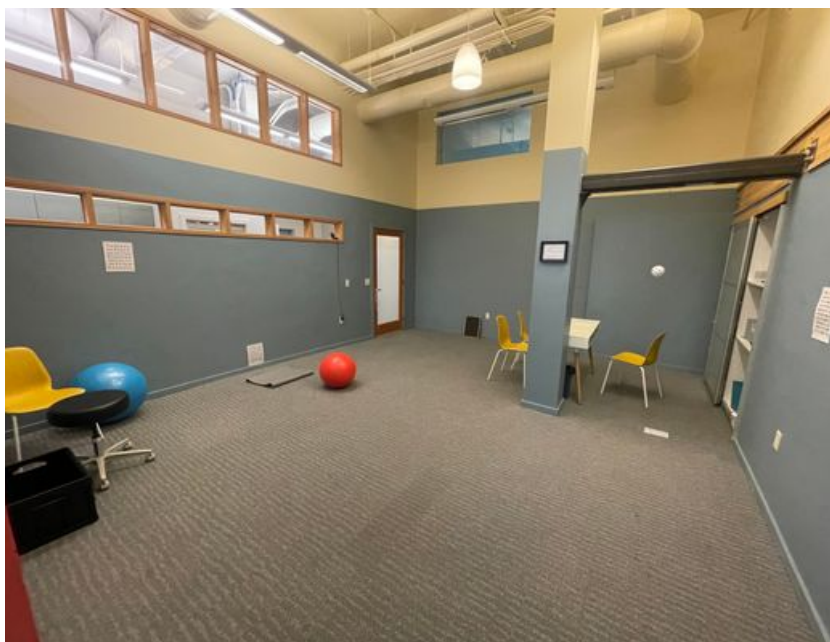
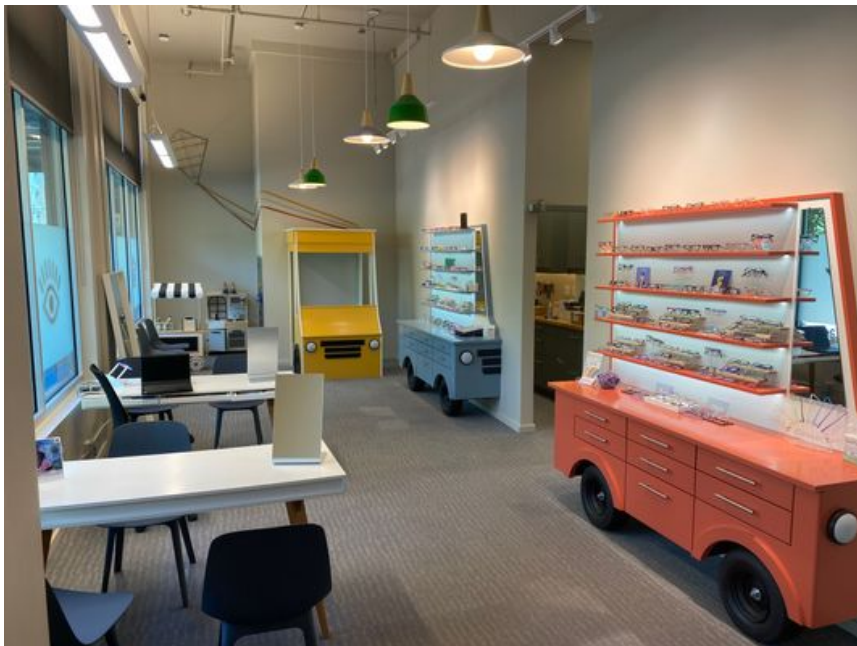
503.515.7746
vinny@vcscommercialrealty.com


COMMERCIAL REALTY

SUITE 180

Suite Highlights

- Retail space, currently set up with 4 exam rooms, 3 offices, a therapy room and a kitchen
- Spacious reception storefront with large windows overlooking MLK Blvd
- 2,453 sq feet



SUITE 202

Suite Highlights

- Second-floor suite
- 1,900 square ft.
- Tall ceilings
- Build out allowance available



SUITE 204



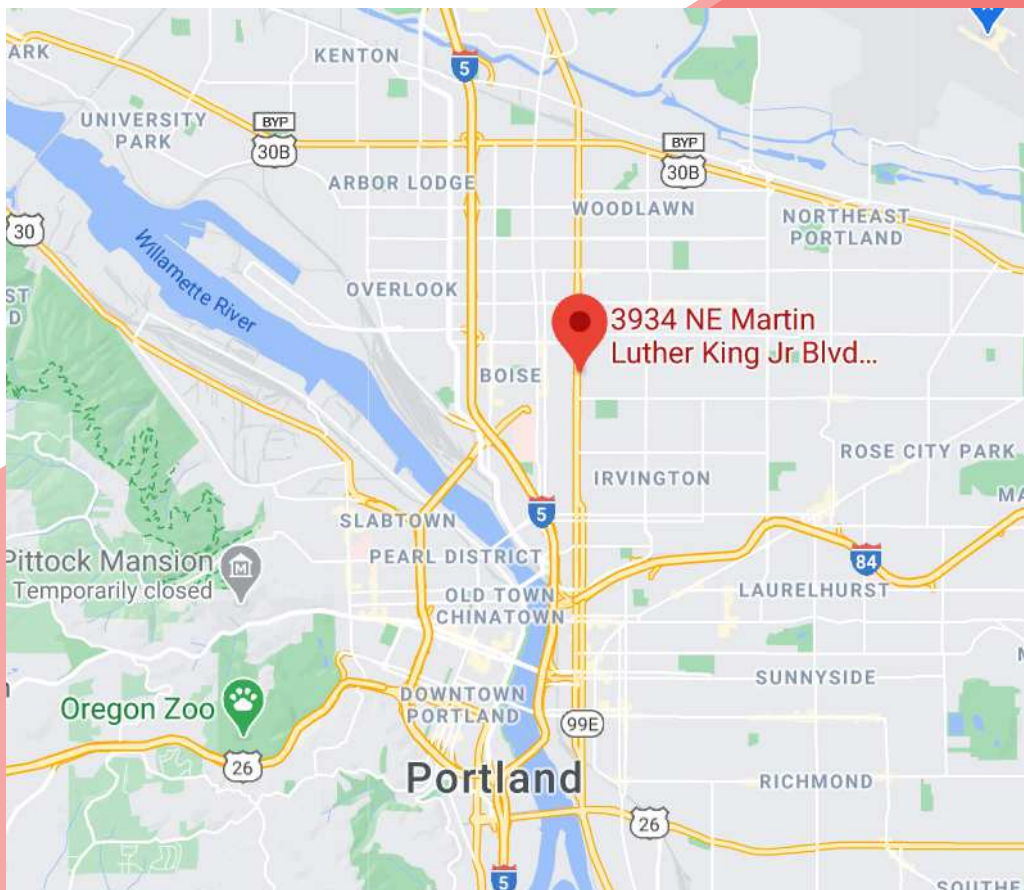
Suite Amenities

- 2,324 sq ft
- Conference room
- Kitchenette
- 2 private offices
- Open bullpen

503.515.7746

vinny@vcscommercialrealty.com

VS
COMMERCIAL REALTY



ABOUT MLK NEIGHBORHOOD

MLK is well re-known for its tribute to multi-cultural communities, progress, and inclusive nature. This building sees high traffic count due to the proximity of the Moda Center, Nike Outlet, and many popular urban restaurants. With easy freeway access and public transit, it's perfect for both commuters and downtown dwellers.
