
165 East 52nd Street AKA 866 Third Avenue

MIDTOWN
NEW YORK, NY



Property Details

Location

North block between Third and Lexington Avenues

Approximate Size

Ground Floor 1,200 SF

Lower Level 400 SF

Frontage

20 FT on East 52nd Street

Term

Long term

Possession

Immediate

Site Status

Formerly Chop't

Neighbors

Sweetgreen, Chipotle Mexican Grill, Starbucks, Ground Central Coffee Company, Hillstone and Wolfgang's Steakhouse

Comments

At the base of a 307-room Marriott Courtyard Hotel and 9-floor Memorial Sloan-Kettering Cancer Center outpatient Clinic

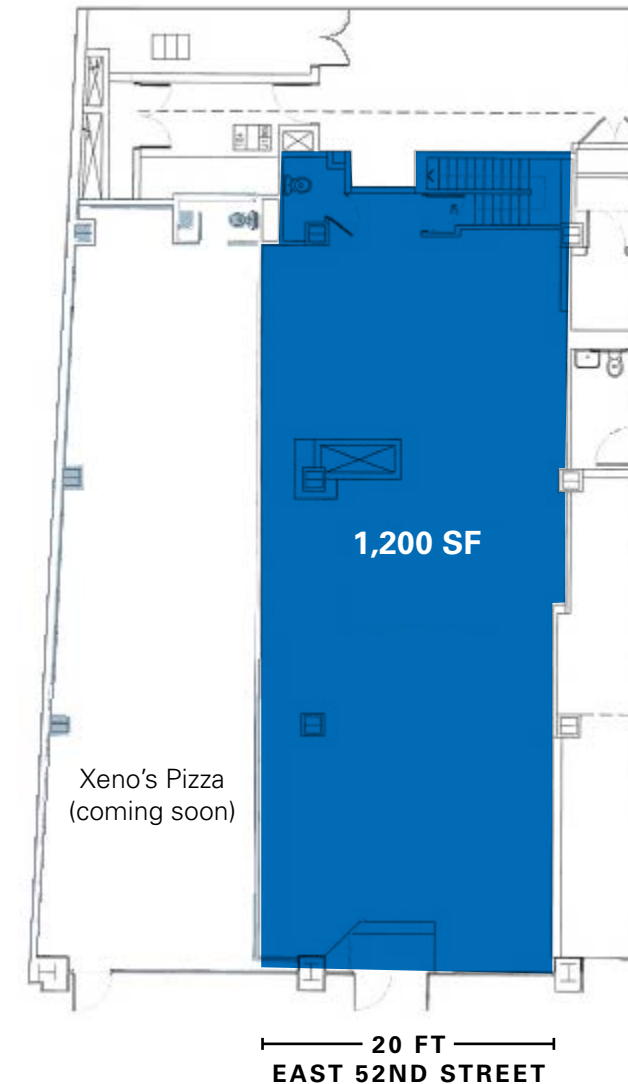
All uses considered

One of Manhattan's best side streets for fast-casual restaurant

Steps away from the **6** **E** **F** subway lines

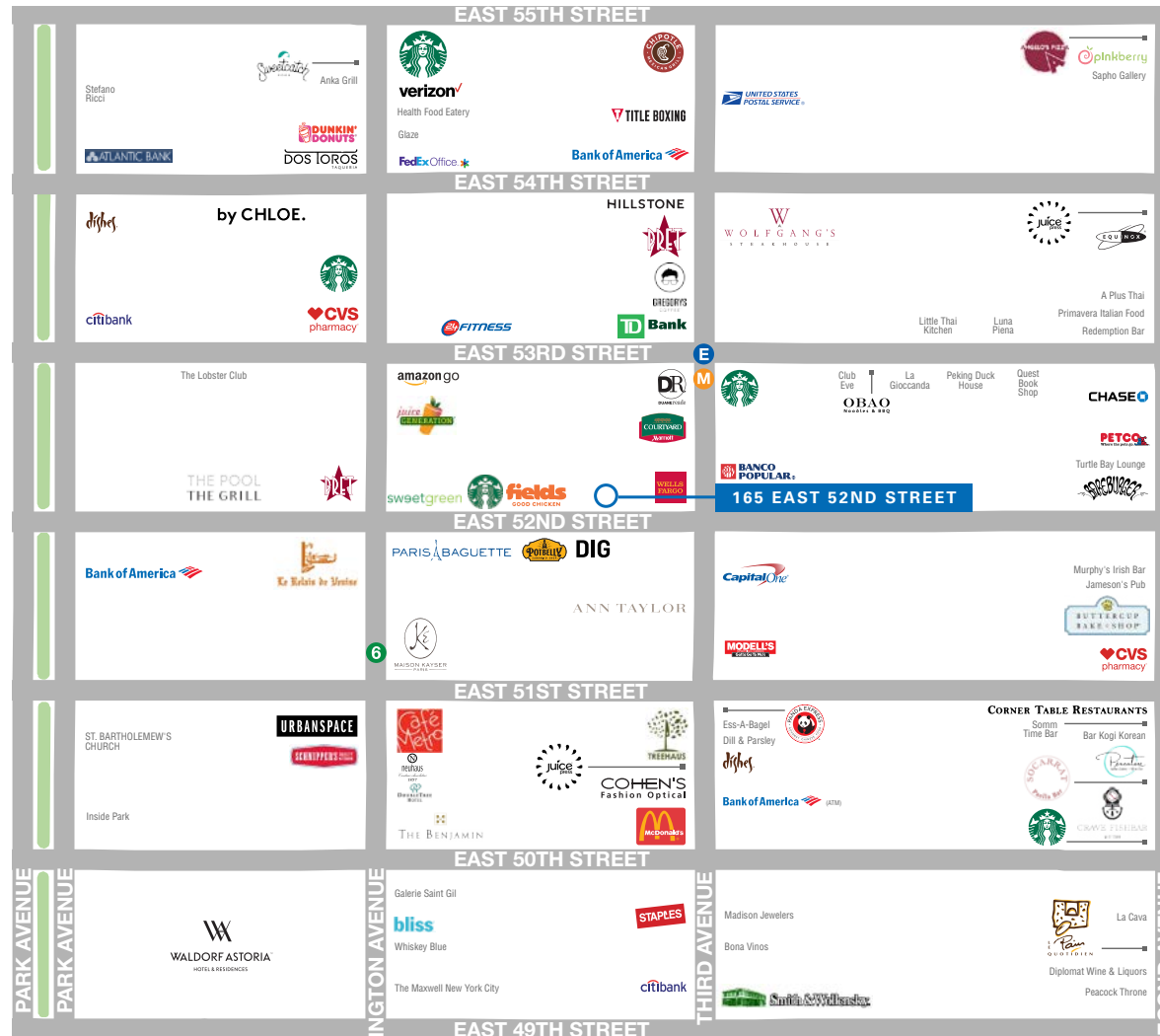
Black iron venting and gas possible

Ground Floor



165 EAST 52ND STREET | AKA 866 THIRD AVENUE

Area Retail



CONTACT

Michael Paster

t 212-351-9345

michael.paster@nmrk.com

Logan Ryan

t 212-916-2936

logan.ryan@nmrk.com

nmrk.com