

1515 BURNT MILL ROAD

Cherry Hill, NJ 08003



FOR SUBLEASE



OFFICE



11,746 SF (DIVISIBLE)



PROPERTY DESCRIPTION

11,746+/- SF available for sublease, divisible

Common elevator, restrooms, and entrance

Executive suites along window lines

Cubicle furniture available

Ample parking

Excellent proximity to Woodcrest Patco High Speed Line Woodcrest Station and to I-295 Exits 32 & 31

Suite 1 – 5,432 SF
8 private offices including 2 executive suites with private restroom

1 conference room

Wet break area

Suite 2 – 6,314 SF

12 private offices

Wet break area

LEASE RATE:

\$16.50 SF/YR (PLUS ELEC. & JANITORIAL)



FOR MORE INFORMATION

Rebecca Ting, SIOR

856.234.9600 x206

rebecca.ting@naimertz.com

Julie Kronfeld, SIOR

856.802.6516

julie.kronfeld@naimertz.com

NAI MERTZ DISCLAIMER: NO WARRANTY OR REPRESENTATION, EXPRESS OR IMPLIED, IS MADE AS TO THE ACCURACY OF THE INFORMATION CONTAINED HEREIN, AND THE SAME IS SUBMITTED SUBJECT TO ERRORS, OMISSIONS, CHANGE OF PRICE, RENTAL OR OTHER CONDITIONS, PRIOR SALE, LEASE OR FINANCING, OR WITHDRAWAL WITHOUT NOTICE, AND OF ANY SPECIAL LISTING CONDITIONS IMPOSED BY OUR PRINCIPALS NO WARRANTIES OR REPRESENTATIONS ARE MADE AS TO THE CONDITION OF THE PROPERTY OR ANY HAZARDS CONTAINED THEREIN ARE ANY TO BE IMPLIED. OUTLINES ARE APPROXIMATE AND SHOWN ONLY TO IDENTIFY THE PARCEL IN CONSIDERATION.

NAIMertz



NAI Mertz | 21 Roland Avenue
Mount Laurel, NJ 08054

856.234.9600 | naimertz.com



1515 BURNT MILL ROAD

Cherry Hill, NJ 08003



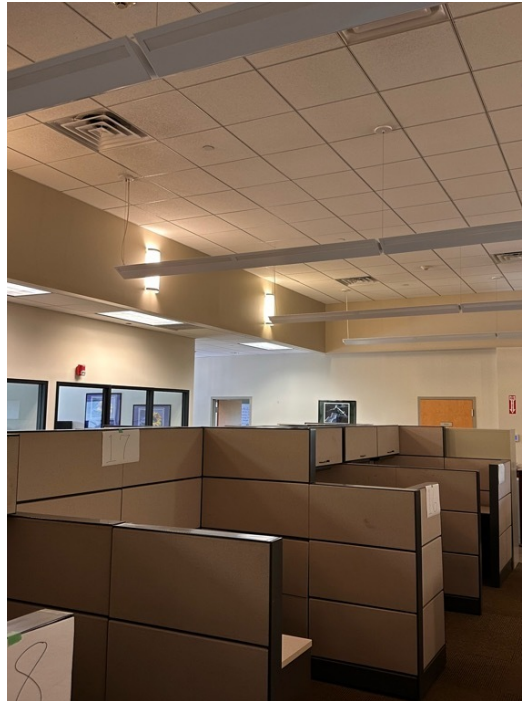
FOR SUBLEASE



OFFICE



11,746 SF (DIVISIBLE)



FOR MORE INFORMATION

Rebecca Ting, SIOR

☎ 856.234.9600 x206

✉ rebecca.ting@naimertz.com

Julie Kronfeld, SIOR

☎ 856.802.6516

✉ julie.kronfeld@naimertz.com

NAI MERTZ DISCLAIMER: NO WARRANTY OR REPRESENTATION, EXPRESS OR IMPLIED, IS MADE AS TO THE ACCURACY OF THE INFORMATION CONTAINED HEREIN, AND THE SAME IS SUBMITTED SUBJECT TO ERRORS, OMISSIONS, CHANGE OF PRICE, RENTAL OR OTHER CONDITIONS, PRIOR SALE, LEASE OR FINANCING, OR WITHDRAWAL WITHOUT NOTICE, AND OF ANY SPECIAL LISTING CONDITIONS IMPOSED BY OUR PRINCIPALS NO WARRANTIES OR REPRESENTATIONS ARE MADE AS TO THE CONDITION OF THE PROPERTY OR ANY HAZARDS CONTAINED THEREIN ARE ANY TO BE IMPLIED. OUTLINES ARE APPROXIMATE AND SHOWN ONLY TO IDENTIFY THE PARCEL IN CONSIDERATION.

NAIMertz



NAI Mertz | 21 Roland Avenue
Mount Laurel, NJ 08054

856.234.9600 | naimertz.com



1515 BURNT MILL ROAD

Cherry Hill, NJ 08003



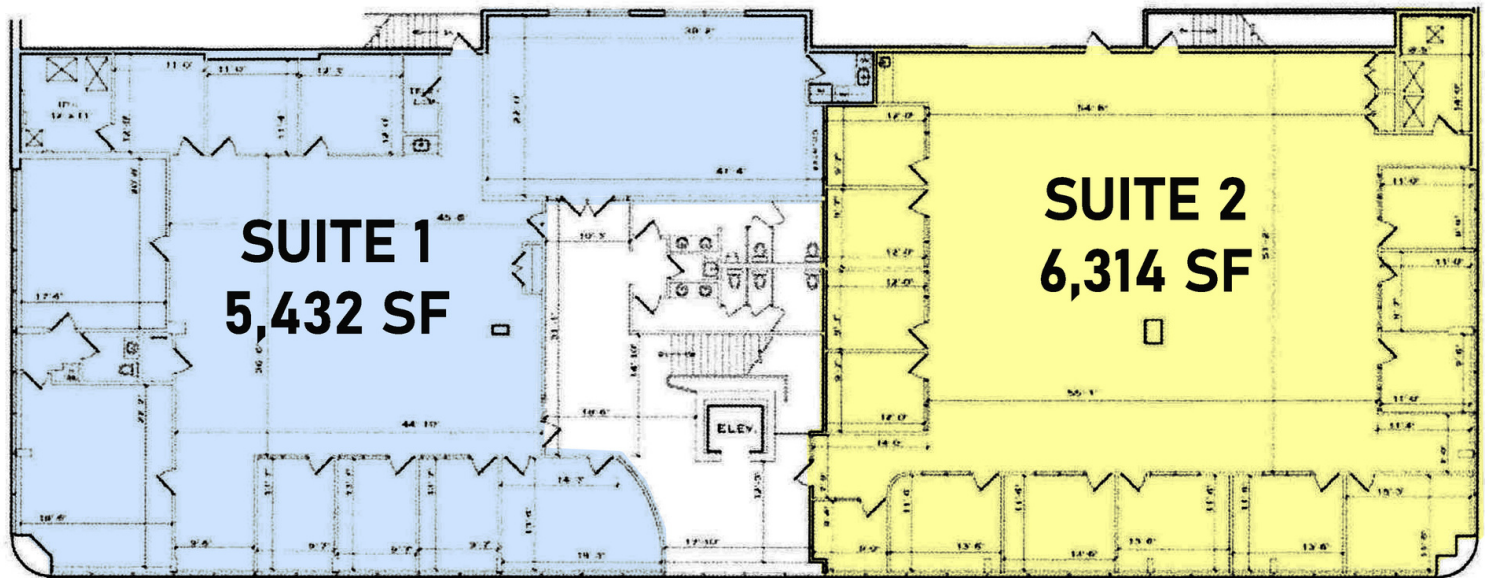
FOR SUBLEASE



OFFICE



11,746 SF (DIVISIBLE)



LEASE INFORMATION

Lease Type:	Plus Elec. & Janitorial	Lease Term:	Negotiable
Total Space:	5,432 - 11,746 SF	Lease Rate:	\$16.50 SF/yr

AVAILABLE SPACES

SUITE	TENANT	SIZE (SF)	LEASE TYPE	LEASE RATE	DESCRIPTION
Sublease	Available	4,032 - 11,746 SF	Plus Elec. & Janitorial	\$16.50 SF/yr	Suite 1 - 5,432 SF comprises 8 private offices including 2 executive suites with private restroom, 1 conference room, wet break area. Suite 2 - 6,314 SF comprises 12 private offices and wet break area

FOR MORE INFORMATION

Rebecca Ting, SIOR

856.234.9600 x206

rebecca.ting@naimertz.com

Julie Kronfeld, SIOR

856.802.6516

julie.kronfeld@naimertz.com

NAIMertz



NAI Mertz | 21 Roland Avenue
Mount Laurel, NJ 08054

856.234.9600 | naimertz.com

NAI MERTZ DISCLAIMER: NO WARRANTY OR REPRESENTATION, EXPRESS OR IMPLIED, IS MADE AS TO THE ACCURACY OF THE INFORMATION CONTAINED HEREIN, AND THE SAME IS SUBMITTED SUBJECT TO ERRORS, OMISSIONS, CHANGE OF PRICE, RENTAL OR OTHER CONDITIONS, PRIOR SALE, LEASE OR FINANCING, OR WITHDRAWAL WITHOUT NOTICE, AND OF ANY SPECIAL LISTING CONDITIONS IMPOSED BY OUR PRINCIPALS NO WARRANTIES OR REPRESENTATIONS ARE MADE AS TO THE CONDITION OF THE PROPERTY OR ANY HAZARDS CONTAINED THEREIN ARE ANY TO BE IMPLIED. OUTLINES ARE APPROXIMATE AND SHOWN ONLY TO IDENTIFY THE PARCEL IN CONSIDERATION.



1515 BURNT MILL ROAD

Cherry Hill, NJ 08003



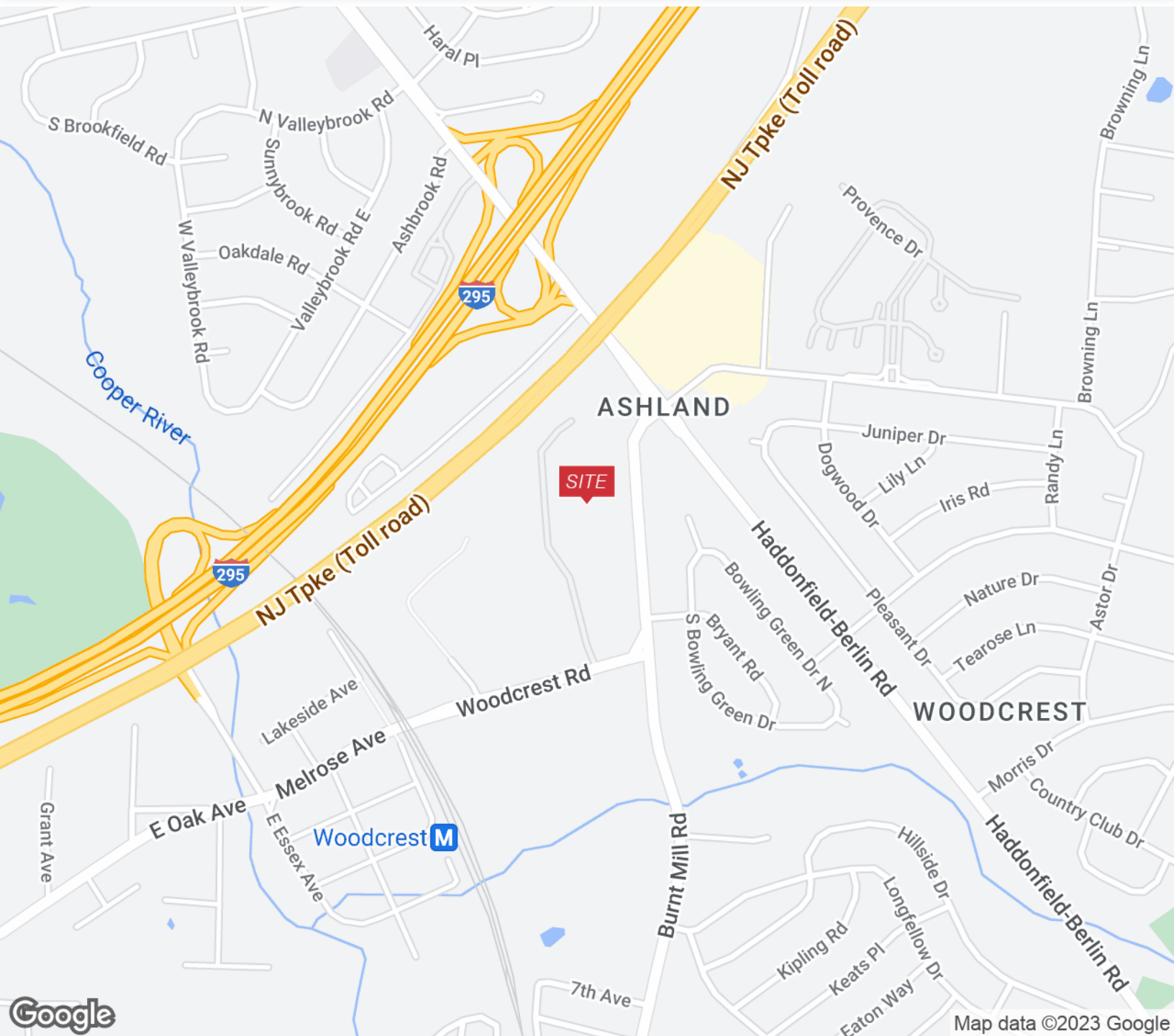
FOR SUBLEASE



OFFICE



11,746 SF (DIVISIBLE)



FOR MORE INFORMATION

Rebecca Ting, SIOR

856.234.9600 x206

rebecca.ting@naimertz.com

Julie Kronfeld, SIOR

856.802.6516

julie.kronfeld@naimertz.com

NAI MERTZ DISCLAIMER: NO WARRANTY OR REPRESENTATION, EXPRESS OR IMPLIED, IS MADE AS TO THE ACCURACY OF THE INFORMATION CONTAINED HEREIN, AND THE SAME IS SUBMITTED SUBJECT TO ERRORS, OMISSIONS, CHANGE OF PRICE, RENTAL OR OTHER CONDITIONS, PRIOR SALE, LEASE OR FINANCING, OR WITHDRAWAL WITHOUT NOTICE, AND OF ANY SPECIAL LISTING CONDITIONS IMPOSED BY OUR PRINCIPALS NO WARRANTIES OR REPRESENTATIONS ARE MADE AS TO THE CONDITION OF THE PROPERTY OR ANY HAZARDS CONTAINED THEREIN ARE ANY TO BE IMPLIED. OUTLINES ARE APPROXIMATE AND SHOWN ONLY TO IDENTIFY THE PARCEL IN CONSIDERATION.

NAIMertz



NAI Mertz | 21 Roland Avenue

Mount Laurel, NJ 08054

856.234.9600 | naimertz.com



1515 BURNT MILL ROAD

Cherry Hill, NJ 08003



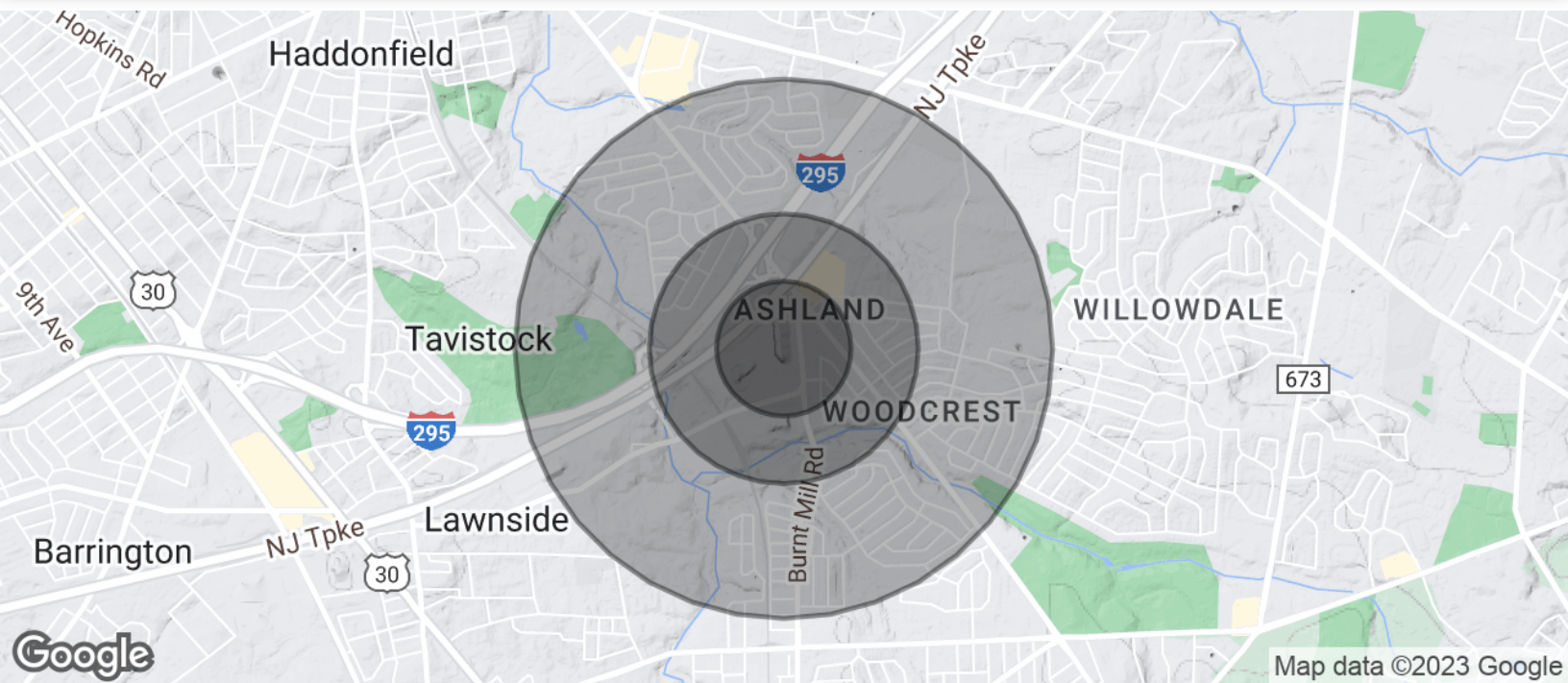
FOR SUBLEASE



OFFICE



11,746 SF (DIVISIBLE)



POPULATION

	0.25 MILES	0.5 MILES	1 MILE
Total Population	581	2,387	8,311
Average Age	46.8	46.9	46.5
Average Age (Male)	44.3	44.0	44.6
Average Age (Female)	49.5	49.4	48.7

HOUSEHOLDS & INCOME

	0.25 MILES	0.5 MILES	1 MILE
Total Households	231	949	3,169
# of Persons per HH	2.5	2.5	2.6
Average HH Income	\$109,592	\$114,565	\$125,346
Average House Value	\$242,186	\$249,240	\$275,029

* Demographic data derived from 2020 ACS - US Census

FOR MORE INFORMATION

Rebecca Ting, SIOR



856.234.9600 x206



rebecca.ting@naimertz.com

Julie Kronfeld, SIOR



856.802.6516



julie.kronfeld@naimertz.com

NAIMertz



NAI Mertz | 21 Roland Avenue
Mount Laurel, NJ 08054

856.234.9600 | naimertz.com

NAI MERTZ DISCLAIMER: NO WARRANTY OR REPRESENTATION, EXPRESS OR IMPLIED, IS MADE AS TO THE ACCURACY OF THE INFORMATION CONTAINED HEREIN, AND THE SAME IS SUBMITTED SUBJECT TO ERRORS, OMISSIONS, CHANGE OF PRICE, RENTAL OR OTHER CONDITIONS, PRIOR SALE, LEASE OR FINANCING, OR WITHDRAWAL WITHOUT NOTICE, AND OF ANY SPECIAL LISTING CONDITIONS IMPOSED BY OUR PRINCIPALS NO WARRANTIES OR REPRESENTATIONS ARE MADE AS TO THE CONDITION OF THE PROPERTY OR ANY HAZARDS CONTAINED THEREIN ARE ANY TO BE IMPLIED. OUTLINES ARE APPROXIMATE AND SHOWN ONLY TO IDENTIFY THE PARCEL IN CONSIDERATION.

