

NORTH SHATTUCK OFFICE SPACE FOR LEASE

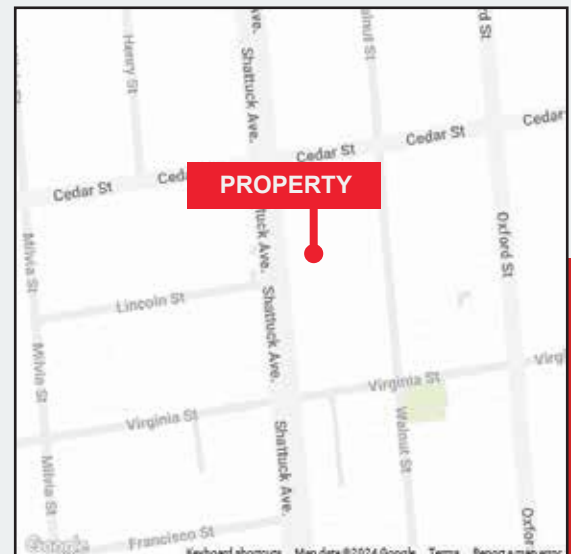
1625 Shattuck Avenue, Suite 270, Berkeley, CA 94709

eLLWOOD
COMMERCIAL REAL ESTATE



PROPERTY HIGHLIGHTS

- Gourmet Ghetto Professional Office Space
- Approximately 2,667 square feet
- Five Private Offices, Conference Room and Kitchen
- Large Operable Windows & HVAC
- Secure Building and Parking
- Excellent Restaurants - Farmers Market nearby
- Walk to BART and UC Berkeley
- Rent is negotiable



ellwoodcommercial.com

Barbara Kami

O 510 238 9111 x12
M 510 541 1016
Lic. #01169157
barbara@ellwoodcommercial.com

Matt Nebel

Kidder Mathews
M 510-914-9675
Lic. 01881807
Matt.nebel@kidder.com

Joe McGlynn

Lee & Associates
M 510-903-7612
Lic. 01911689
jmcglynn@lee-associates.com

eLLWOOD
COMMERCIAL REAL ESTATE
PO BOX 2000, Orinda, CA 94563

NORTH SHATTUCK OFFICE SPACE FOR LEASE
1625 Shattuck Avenue, Suite 270, Berkeley, CA 94709

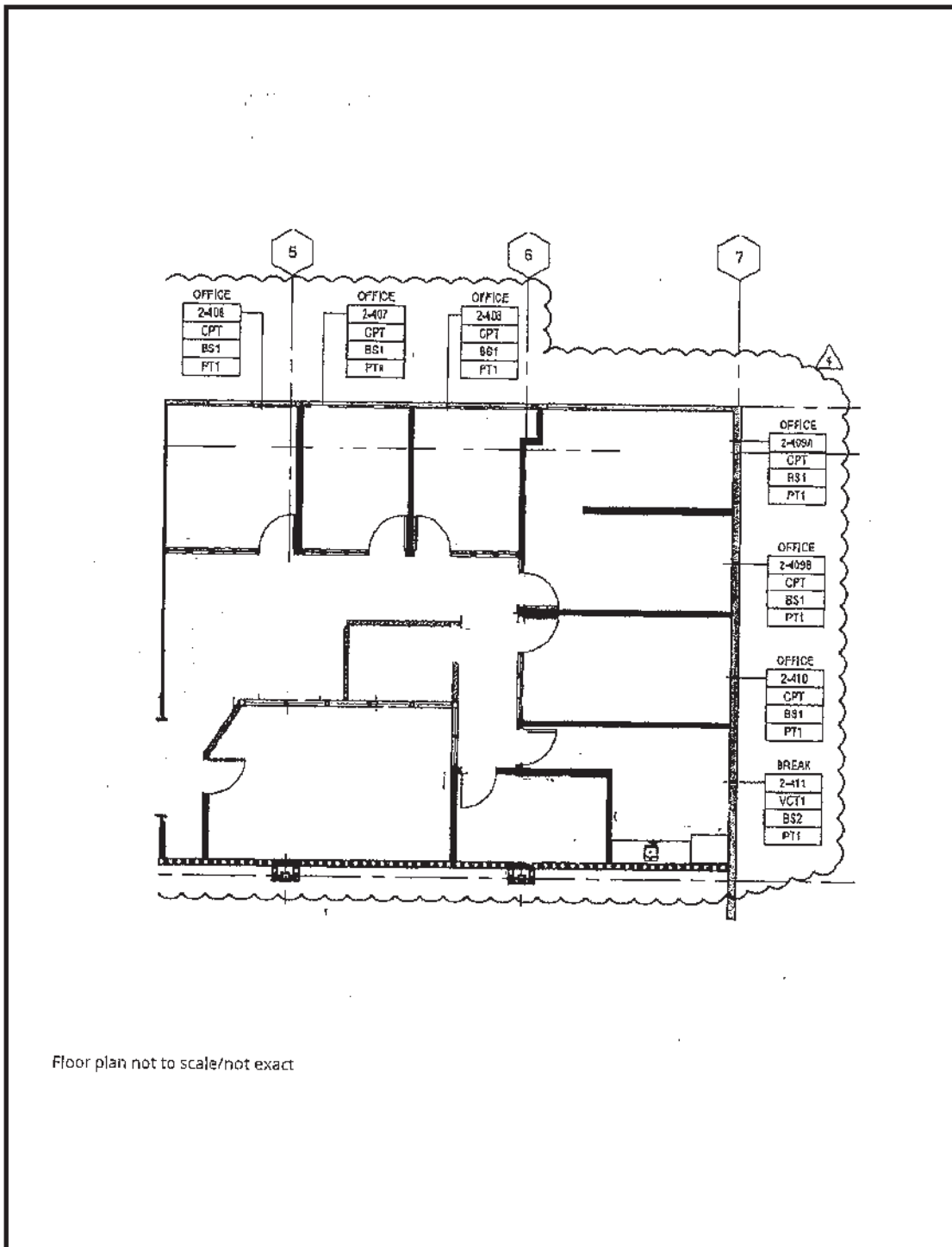


ellwoodcommercial.com

The information contained herein has been obtained from sources deemed reliable but has not been verified and no guarantee, warranty, or representation, either expressed or implied, is made with respect to such information. Terms of sale or lease and availability are subject to change or withdrawal without notice.

NORTH SHATTUCK OFFICE SPACE FOR LEASE

1625 Shattuck Avenue, Suite 270, Berkeley, CA 94709



ellwoodcommercial.com

Barbara Kami

O 510 238 9111 x12
M 510 541 1016
Lic. #01169157
barbara@ellwoodcommercial.com

Matt Nebel

Kidder Mathews
M 510-914-9675
Lic. 01881807
Matt.nebel@kidder.com

Joe McGlynn

Lee & Associates
M 510-903-7612
Lic. 01911689
jmcglynn@lee-associates.com

ELLWOOD
COMMERCIAL REAL ESTATE
PO BOX 2000, Orinda, CA 94563