



154 Cornerstone Ln

154 Cornerstone Ln, Hot Springs, AR 71913



Deborah Libby

Lake Hamilton Realty, Inc
4425 Central Ave, Suite C, Hot Springs, AR 71913
debteetime@yahoo.com
(501) 538-2369

154 Cornerstone Ln

\$2,200,000

154 CORNERSTONE HOT SPRINGS AR DOUBLE NN LEASE - TENANT HOPE BRIDGE AUTISM THERAPY CENTERS

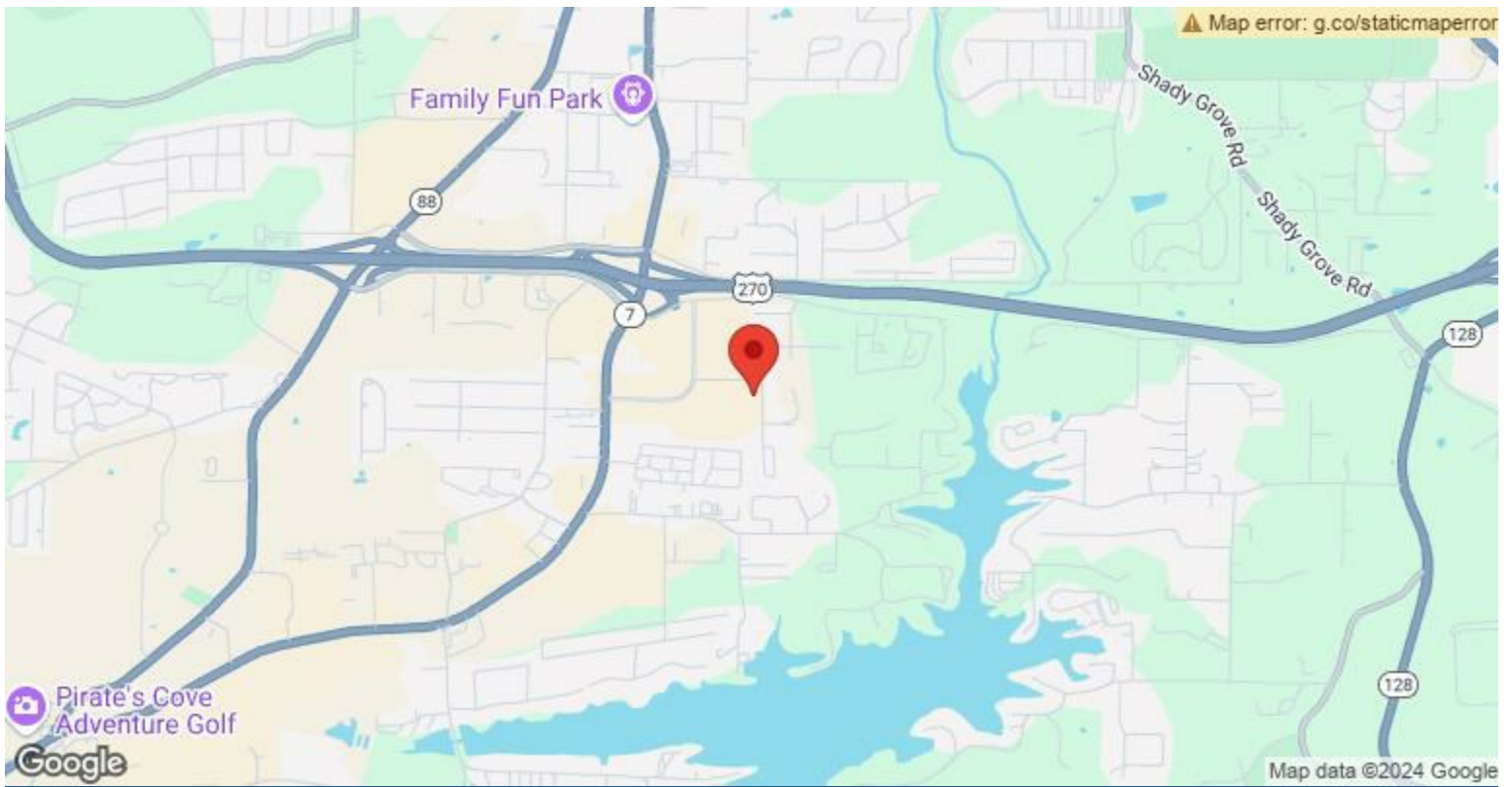
Excellent Medical Tenant Commercial NN Lease. Located within the CORNERSTONE MARKET PLACE, hosting Anchor Tenants Lowes and Office Depot, TJ Maxx, Belks- Center is 335,000 SF. Prime Positioning at Central Avenue (US Hwy & Martin Luther King, Jr Expressway).

Built 2012. 7,038 SF. 1.57 Acre. 63 Parking Spaces. \$12,444 Month Rent Amount. Excellent Investment. Fully-occupied property for sale....

- 100% occupied.



Price:	\$2,200,000
Property Type:	Office
Property Subtype:	Medical
Building Class:	A
Sale Type:	Investment
Cap Rate:	6.00%
Lot Size:	1.57 AC
Rentable Building Area:	7,038 SF
Rentable Building Area:	7,038 SF
No. Stories:	1
Year Built:	2012
Tenancy:	Single
Parking Ratio:	8.95/1,000 SF
Zoning Description:	Commercial
APN / Parcel ID:	400-12410-001-000

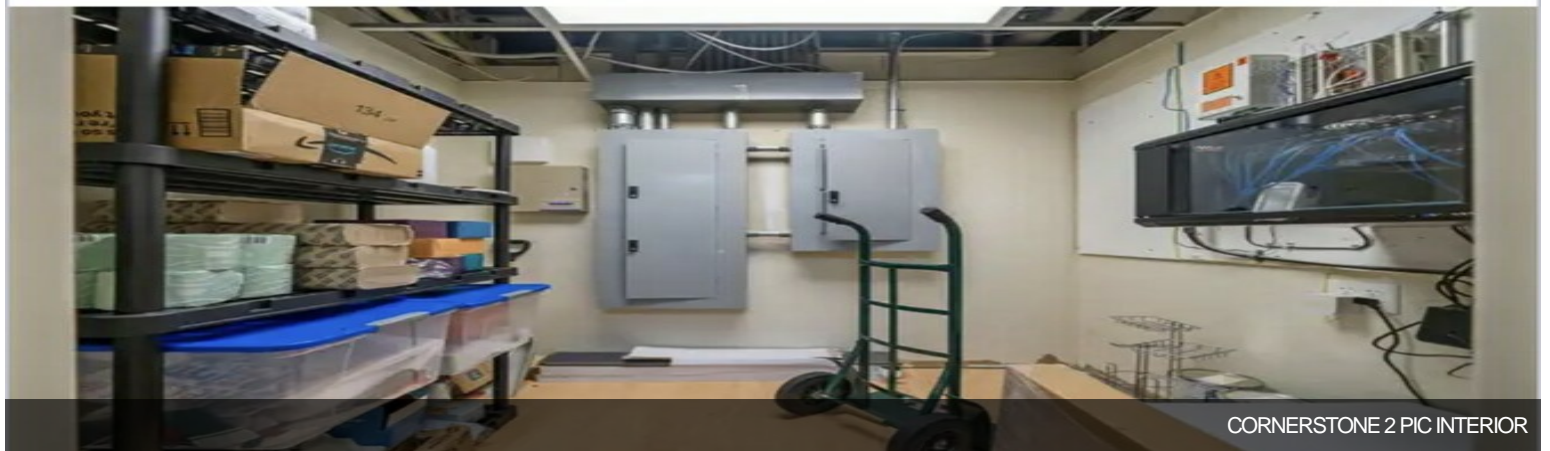


154 Cornerstone Ln, Hot Springs, AR 71913

Property Photos



Building Photo



CORNERSTONE 2 PIC INTERIOR

Property Photos

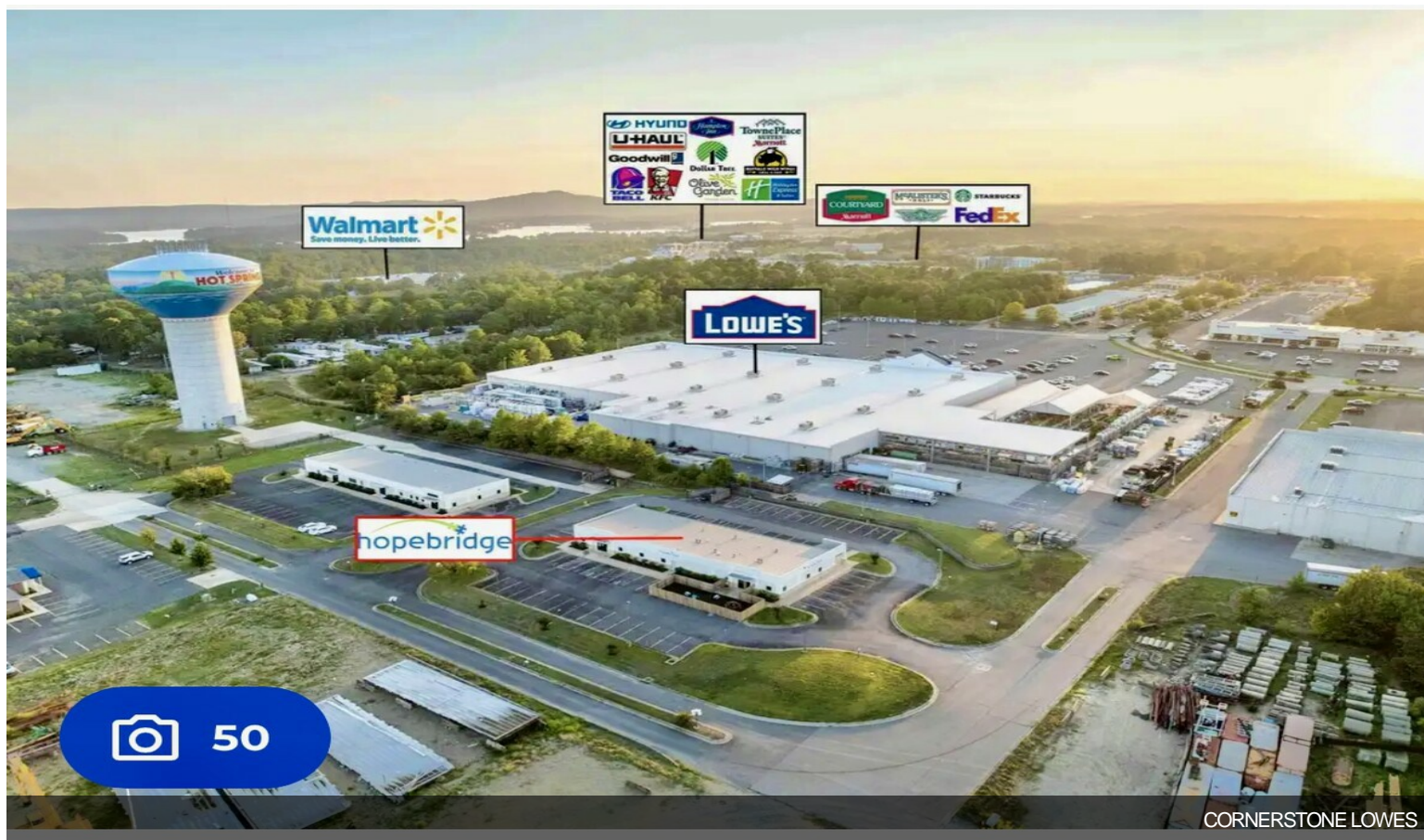


CORNERSTONE INTERIOR PIC 2



CORNERSTONE WHITE FRONT

Property Photos



Property Photos

The image shows a map interface with a white pop-up window. The pop-up window contains the following text: ONOMATOPOEIA LLC, 154 CORNERSTONE LN, HOT SPRINGS NATIONAL PARK, AR 71913-6560, APN : 400-12410-001-000, and 7,089 SQ FT BED 0/0 BATH. Below the text is a blue button labeled 'VIEW PROPERTY'. A blue pin with the letter 'S' is placed on the map, pointing to a specific parcel. The parcel is labeled with the number '300-08204-001'. To the right of the map, the number '300-082' is visible. The map shows a street labeled 'Cornerstone Ln' and another street labeled 'Com'. The bottom left corner of the map has a red 'Minute Key' icon, and the bottom right corner has the text 'Plat Map'.

ONOMATOPOEIA LLC
154 CORNERSTONE LN
HOT SPRINGS NATIONAL PARK,
AR 71913-6560
APN : 400-12410-001-000
7,089 SQ FT BED 0/0 BATH

[VIEW PROPERTY](#)

300-082

300-08204-001

Cornerstone Ln

Com

Minute Key

Plat Map