

LEASE



RETAIL

SOUTH VILLAGE OF ZIONSVILLE



PROPERTY OVERVIEW

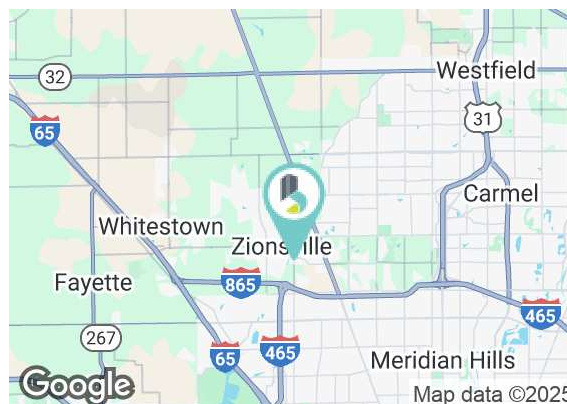
Join Biggby Coffee in a new building to be constructed on Main Street in South Village of Zionsville with up to 3,200 SF available. Or, join Central Indiana Orthopedics in the East Building with 11,166 SF of beautiful office space available. Located at the northeast corner of 106th and Main, this is a thriving retail shopping center just south of Zionsville's historic downtown village.

PROPERTY HIGHLIGHTS

- 3,200 SF divisible space for lease
- 11,166 SF space for lease in neighboring building
- Main Street frontage
- On-site parking
- Great retail intersection at 106th & Main Street
- Close proximity to Creekside Business Park, FedEx, Rahal Letterman, etc.

FOR LEASE 3,200 SF (DIVISIBLE)
BIGGBY BUILDING

FOR LEASE 11,166 SF
EAST BUILDING



BRADLEY COMPANY

310 E. 96th St., Suite 100
Indianapolis, IN 46240
317.663.6000

BETH PATTERSON, CCIM

Senior Vice President | Principal
317.663.6558
bpatterson@bradleyco.com



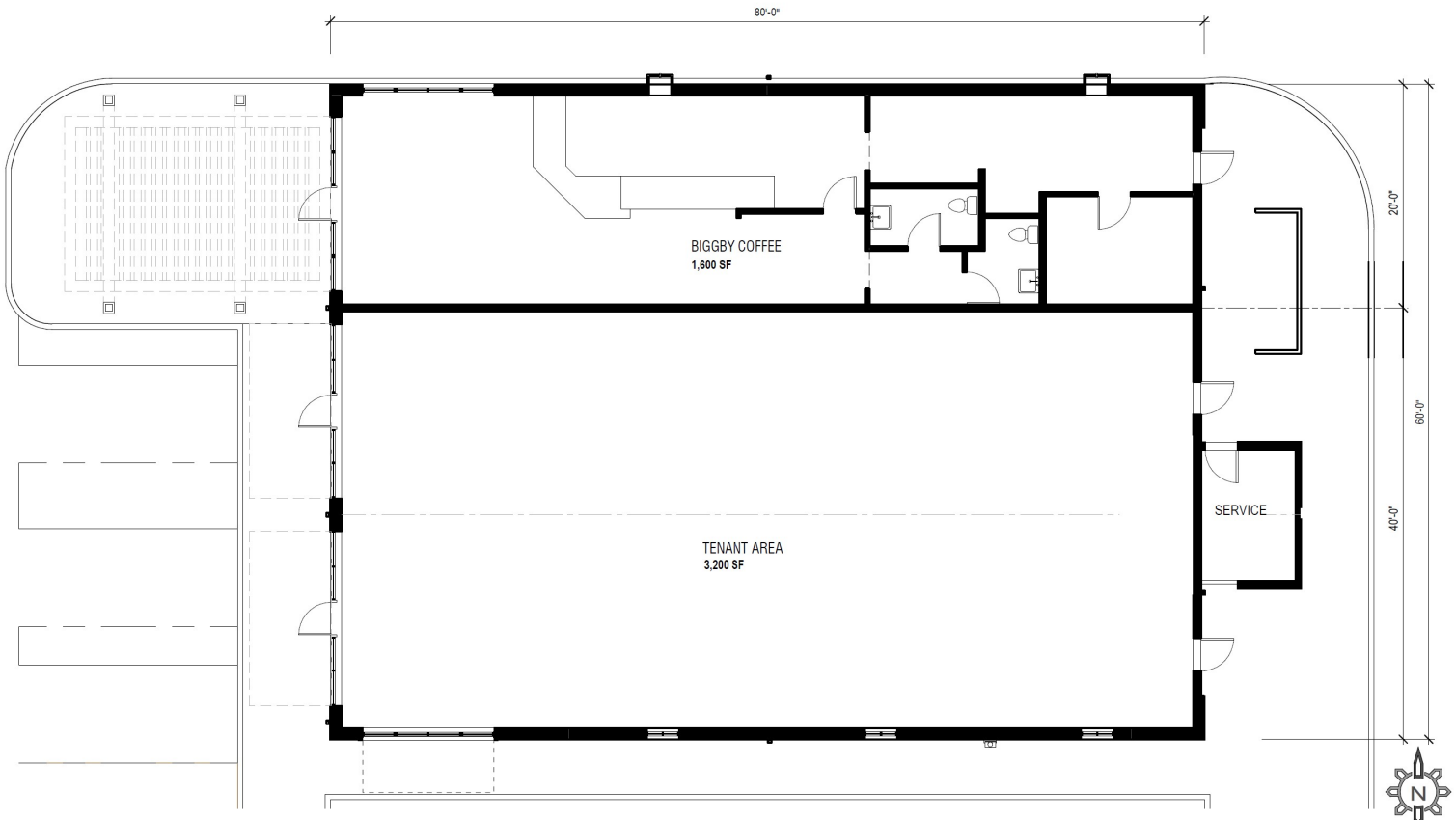
BRADLEYCO.COM



SOUTH VILLAGE OF ZIONSVILLE

LEASE

RETAIL



BETH PATTERSON, CCIM
Senior Vice President | Principal
317.663.6558
bpatterson@bradleyco.com



LEASE

RETAIL





SOUTH VILLAGE OF ZIONSVILLE

LEASE

RETAIL



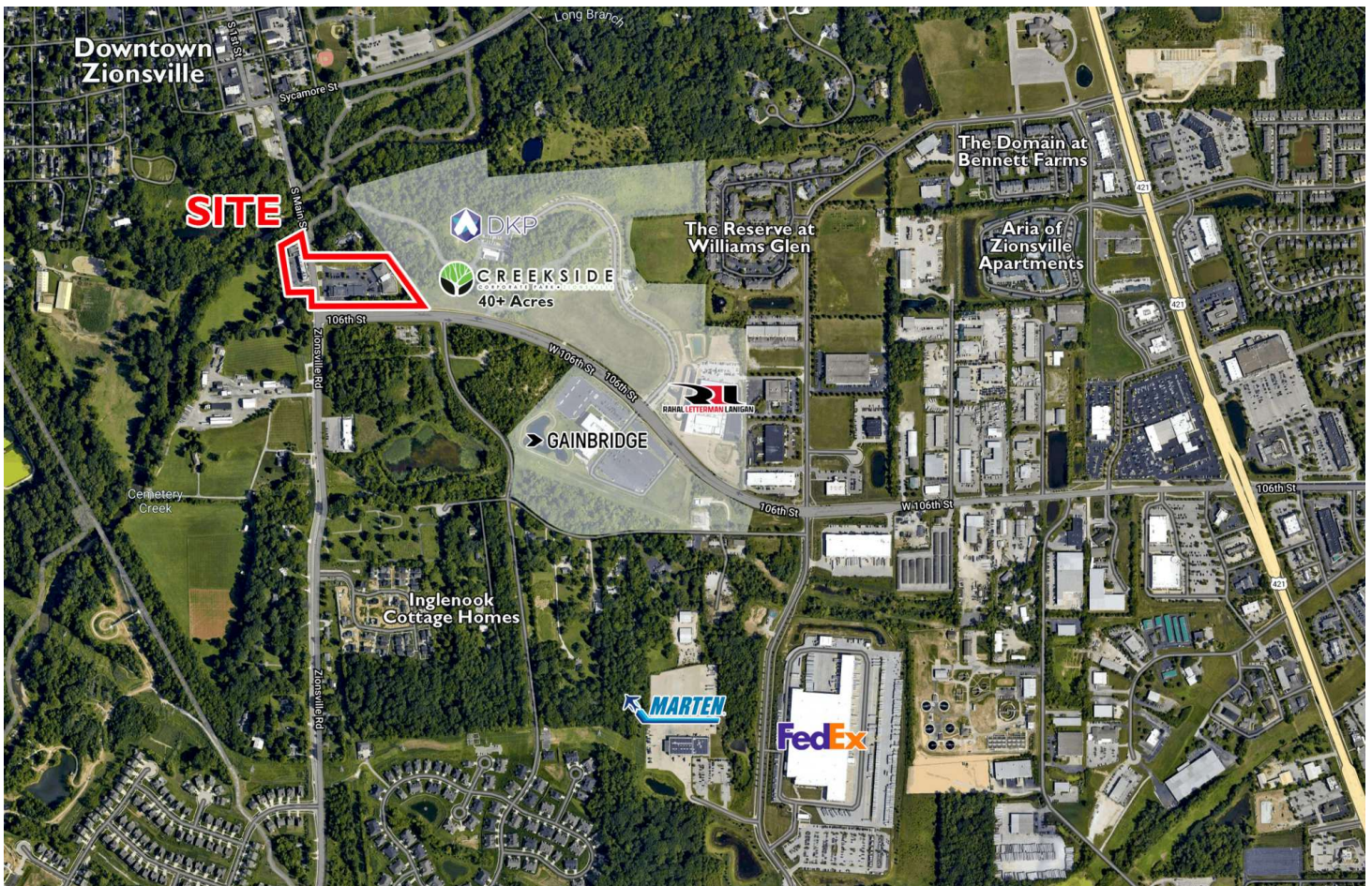
BETH PATTERSON, CCIM
Senior Vice President | Principal
317.663.6558
bpatterson@bradleyco.com



SOUTH VILLAGE OF ZIONSVILLE

LEASE

RETAIL

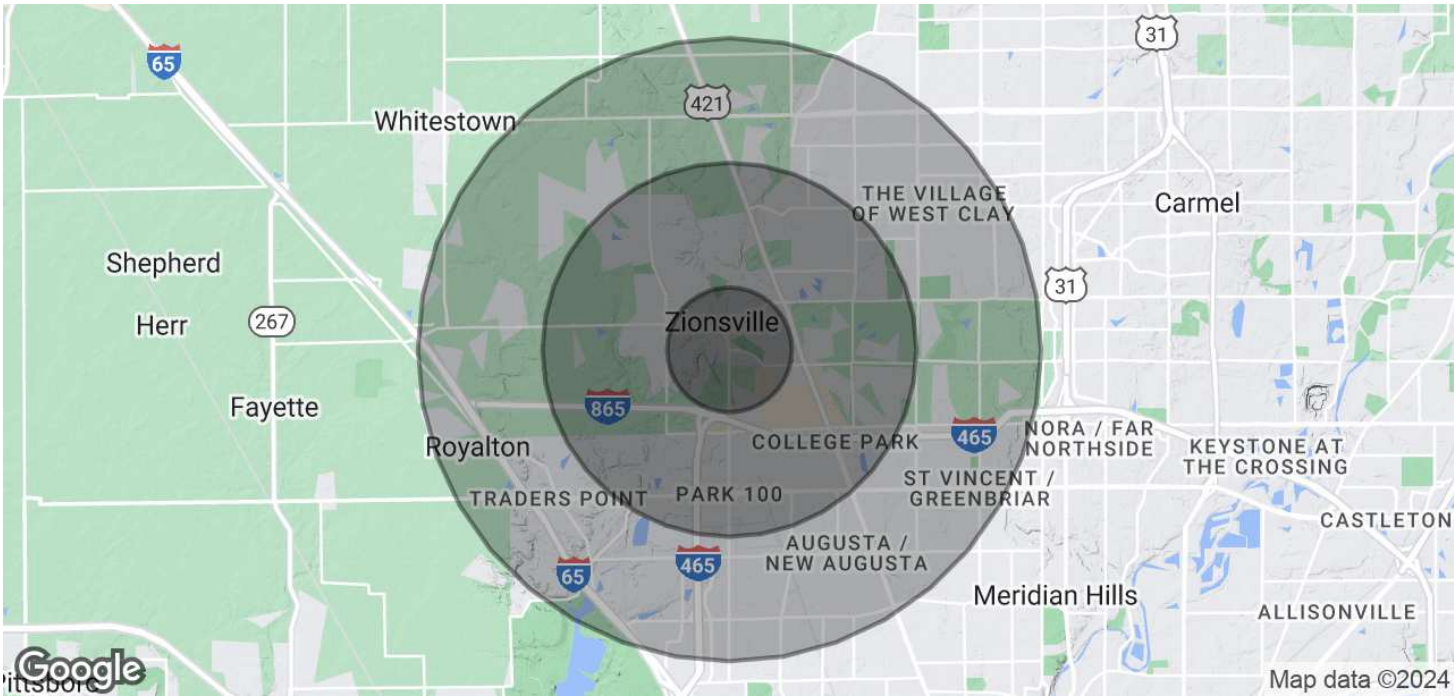


BETH PATTERSON, CCIM
Senior Vice President | Principal
317.663.6558
bpatterson@bradleyco.com



SOUTH VILLAGE OF ZIONSVILLE

LEASERETAIL



DEMOGRAPHICS	1 MILE	3 MILES	5 MILES
Total Population	4,316	30,465	107,028
Total Households	1,951	11,418	41,452
Average HH Income	\$170,880	\$205,429	\$172,521
Average House Value	\$385,544	\$441,520	\$398,053

BETH PATTERSON, CCIM
Senior Vice President | Principal
317.663.6558
bpatterson@bradleyco.com