



OFFICE SPACE FOR LEASE

Historic Bluff Park Neighborhood
606F suite for \$725/mo

HIGHLIGHTS

- Located off Shades Crest/Oxmoor Road
- Convenient access to I-65 and Highway 31
- Two-story, colonial-style building with brick exterior
- Abundant parking
- Near Shades Mountain Plaza Shopping Center and restaurants
- Includes all operating expenses except phone and internet

2170 Clearbrook Road Suite 210 Hoover, AL 35226

Year Built	1986
Building Size	10,000 SF
Unit Size	606 SF
Rent	\$725/mo
Ceiling Height	9'
Lease Type	Full-Service
Lease Term	1 year
Zoning	C2



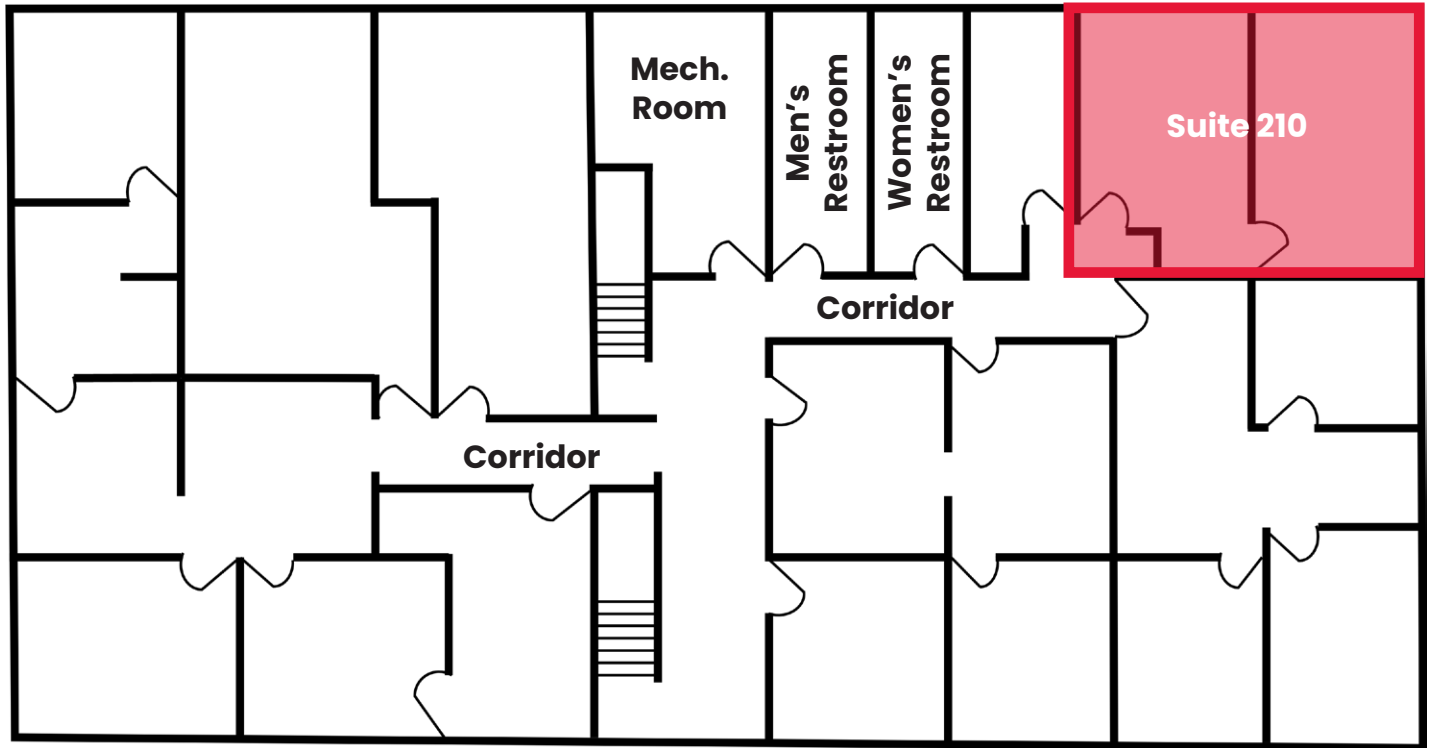
Marc Perlman

Leitman Perlman
205.803.3000
marc@leitmanperlman.com

2421 2nd Ave N, Ste 1
Birmingham, AL 35203
leitmanperlman.com



Rear Parking Lot



Shades Mountain Plaza Shopping Center

Clearbrook Road