



AUCTION DECEMBER 5TH



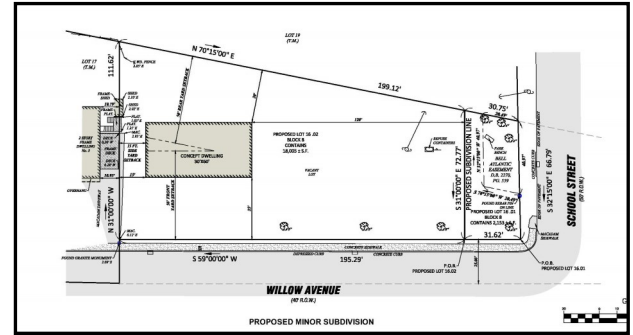
By Order of the Borough of Peapack & Gladstone, Somerset County, NJ
Buildable Residential Lot "In-Town" - Close to the Train Station



Close to Shops & Restaurants

Ready to Go Residential Building Lot in the Somerset Hills

- Peapack-Gladstone is a charming town and one of the top places to live in NJ. Village life is close by, with excellent schools and other amenities.
- Community Amenities: Residents of Peapack-Gladstone benefit from a strong sense of community, with local events, farmer's markets, and recreational facilities that foster a vibrant and welcoming atmosphere.



Conceptual Dwelling Footprint 30'x60'
0.41 +/- Acre Residential Lot

**Broker Participation
Invited**

For a Broker participation form
email: auctions@maxspann.com
or call 888-299-1438

Online bidding concludes Thursday, December 5, 2024 at 11:00 am

Property Address: 5 Willow Ave, Peapack, Somerset County, NJ 07977

Take the next step!

Download the property information package at maxspann.com, then drive-by to preview the property



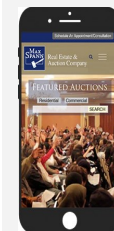
MAX SPANN REAL ESTATE & AUCTION CO

PO BOX 4992, CLINTON NJ 08809
A licensed NJ Real Estate Broker

"50 Years Serving the Nation"
Office Locations:

New York, NY | Clinton, NJ | Naples, FL

888-299-1438 | auctions@maxspann.com | maxspann.com



Bid Online with
the Max Spann
App
Get it Now!

