



±0.97 Acres

**421 West Mesquite Boulevard
Mesquite, NV 89027**

DAVE WRZESINSKI, Vice President, Capital Markets

o: 702 637 7721 c: 702 283 2961

dave.wrzesinski@avisonyoung.com

NV #S.0178303



**AVISON
YOUNG**

±0.97 Acres for Sale

421 West Mesquite Blvd.
Mesquite, NV 89027

Property Details

SALE PRICE

\$210,000

\$216,495 per acre / \$4.97 psf

APNs

001-17-603-037

ZONING

CR-2 Commercial-General

PLANNED LAND USE

Incorporated Clark County (CITY) -
Density

PROPERTY TAX

2025 Property Taxes \$3,824.42

FLOOD ZONE

This property is not in a 100-year flood
zone (FIRM Panel 0387)



The Property

Positioned along bustling Mesquite Blvd, the property offers exceptional visibility and access in one of Mesquite's most active commercial corridors. Surrounded by established businesses and steady traffic from both locals and visitors, this property is perfectly suited for retailers, service providers, or professional offices seeking strong exposure and convenient accessibility.

With Mesquite's continued growth and its reputation as a vibrant, business-friendly community, this location presents a prime opportunity for operators looking to expand or establish their presence in a thriving market.



±0.97 Acres for Sale

Parcel Map

This map is for assessment use only and does NOT represent a survey.
No liability is assumed for the accuracy of the data delineated herein. Information on roads and other non-assessed parcels may be obtained from the Road Document Listing in the Assessor's Office.
This map is compiled from official records, including surveys and deeds, but only contains the information required for assessment. See the recorded documents for more detailed legal information.

USE THIS SCALE (FEET) WHEN MAP REDUCED FROM 11X17 ORIGINAL

MAP LEGEND

ASSESSOR'S PARCELS - CLARK CO., NV.
Briana Johnson - Assessor

BOOK T13S R71E
3002 001
4035 036

SEC. 17

MAP S 2 NE 4

001-17-6

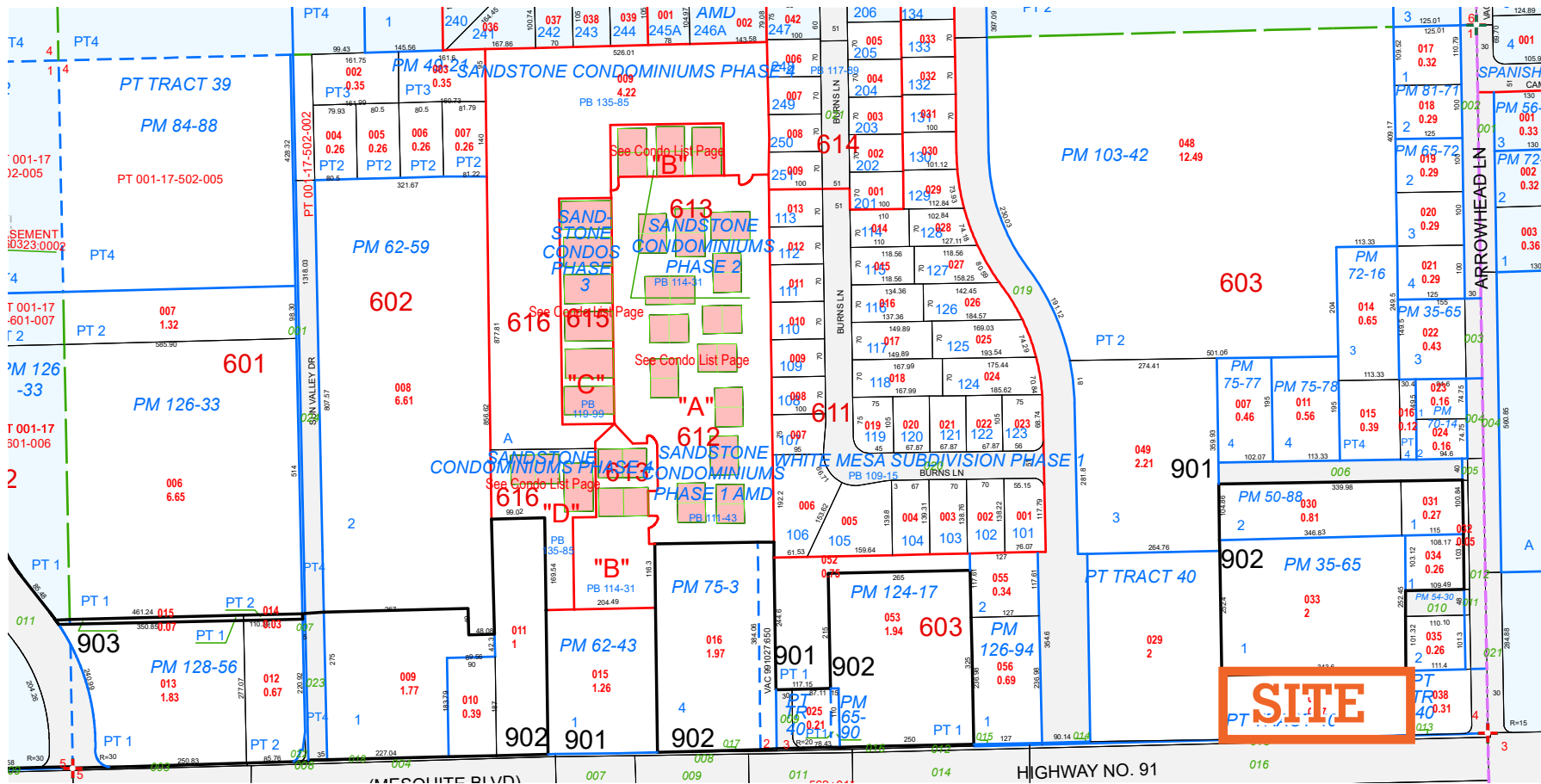
CLARK COUNTY NEVADA

Scale: 1" = 200' Rev: 8/29/2022

PARCEL BOUNDARY
SUB BOUNDARY
PM/LD BOUNDARY
ROAD EASEMENT
MATCH / LEADER LINE
HISTORIC LOT LINE
HISTORIC SUB BOUNDARY
HISTORIC PM/LD BOUNDARY
SECTION LINE

CONDOMINIUM UNIT
AIR SPACE PCL
RIGHT OF WAY PCL
SUB-SURFACE PCL

001 ROAD PARCEL NUMBER
001 PARCEL NUMBER
1.00 ACREAGE
202 PARCEL SUB/SEQ NUMBER
PB 24-45 PLAT RECORDING NUMBER
5 BLOCK NUMBER
5 LOT NUMBER
GL5 GOV. LOT NUMBER



About Mesquite, Nevada

Since incorporation Mesquite has experienced rapid growth, at one time being named “The fastest growing city in America” for it’s size. The population stands at over 29,933 residents. With this growth has come an increase of businesses and services never before enjoyed by residents of the area. A new hospital, medical and dental clinics brought care that had only been possible by traveling outside the valley. Stores, restaurants, movie theatres, art galleries, golf courses, hotels and casinos are providing employment and services for the life style that has become a trademark of Mesquite.

Housing developments are creating beautiful neighborhoods for residents of all ages. Access to newly opened land west of Mesquite has been made possible by the addition of the I-15 interchange encouraging the construction of new light industry. Mesquite has long been a stop on a busy western highway but now it is a destination!



Click Here for
Mesquite Video

THE VALUE-ADDED LIFESTYLE

*The Virgin Valley offers a lifestyle beyond compare.
Plain and simple, people want to live and work here.*

When asked, local employees often remark about the benefits of living and working so close to the recreation of choice and on the flip side, employers often comment that the productivity and work ethic of the workforce is a true asset to businesses in the area. It is just fact that in the Virgin Valley, the quality lifestyle and the business climate are a true asset to our ever-growing workforce.

SOURCE: CHOOSEMESQUITE.COM



29,933
POPULATION
2025



\$75,679
MEDIAN HH
INCOME



13,893
TOTAL NUMBER
OF HOUSEHOLDS

Mesquite, Nevada

About Mesquite, Nevada

7,373

NUMBER OF EMPLOYEES

1,627

NUMBER OF BUSINESSES

NEVADA EXCELLENT TAX ADVANTAGES

No personal income tax

No corporate income tax

No unitary tax

No franchise tax



ATTRACTIVE BUSINESS INCENTIVES

Tax abatements for job creation

Tax abatements for capital investment

Tax investments for intellectual property development

SOURCE: CHAMBEROFCOMMERCE

1 mile 3 mile 5 mile

POPULATION

| | | | |
|---------------------------|-------|--------|--------|
| 2025 Estimated Population | 6,769 | 22,710 | 27,659 |
| 2030 Projected Population | 7,046 | 24,467 | 30,120 |

RACE & ETHNICITY

| | | | |
|----------------------|-------|-------|-------|
| 2025 Estimated White | 64.9% | 71.2% | 72.7% |
| 2025 All Other | 35.1% | 28.8% | 27.3% |

HOUSEHOLD

| | | | |
|---------------------------|-------|--------|--------|
| 2025 Estimated Households | 2,762 | 10,518 | 12,836 |
|---------------------------|-------|--------|--------|

HOUSEHOLD INCOME

| | | | |
|-----------------------------|-----------|----------|-----------|
| 2025 Est. Average Household | \$103,222 | \$98,231 | \$100,017 |
| 2025 Est. Median Household | \$74,047 | \$76,442 | \$77,860 |
| 2025 Est. Per Capita Income | \$42,137 | \$45,540 | \$46,457 |

EDUCATION

| | | | |
|--------------------------|----------------------|----------------------------|----------|
| 2 | 1 | 1 | 1 |
| ELEMENTARY GRADES K-5 | MIDDLE GRADES 6-8 | HIGH SCHOOL GRADES 9-12 | COLLEGE |

MEDICAL

| | | | |
|----------|-------------------------|-----------|----------------------------------|
| 3 | ASSISTED LIVING CARE | 10 | HOSPITAL & MEDICAL FACILITIES |
|----------|-------------------------|-----------|----------------------------------|

SOURCE: SITESUSA

Get in touch

If you would like more information on this offering, please get in touch.

DAVE WRZESINSKI

Vice President, Capital Markets

o: 702 637 7721 c: 702 283 2961

dave.wrzesinski@avisonyoung.com

NV #S.0178303



Visit us online
avisonyoung.com

© 2026 Avison Young - Nevada, LLC. All rights reserved.

E. & O.E.: The information contained herein was obtained from sources which we deem reliable and, while thought to be correct, is not guaranteed by Avison Young.

AVISON
YOUNG