

Westhills Commerce Center

24615-24669 Halsted Road

Farmington Hills, MI

1,700 - 2,860 SF Total Available



Contact Us

Philip Sprague

Vice President

+1 248 351 2032

philip.sprague@cbre.com

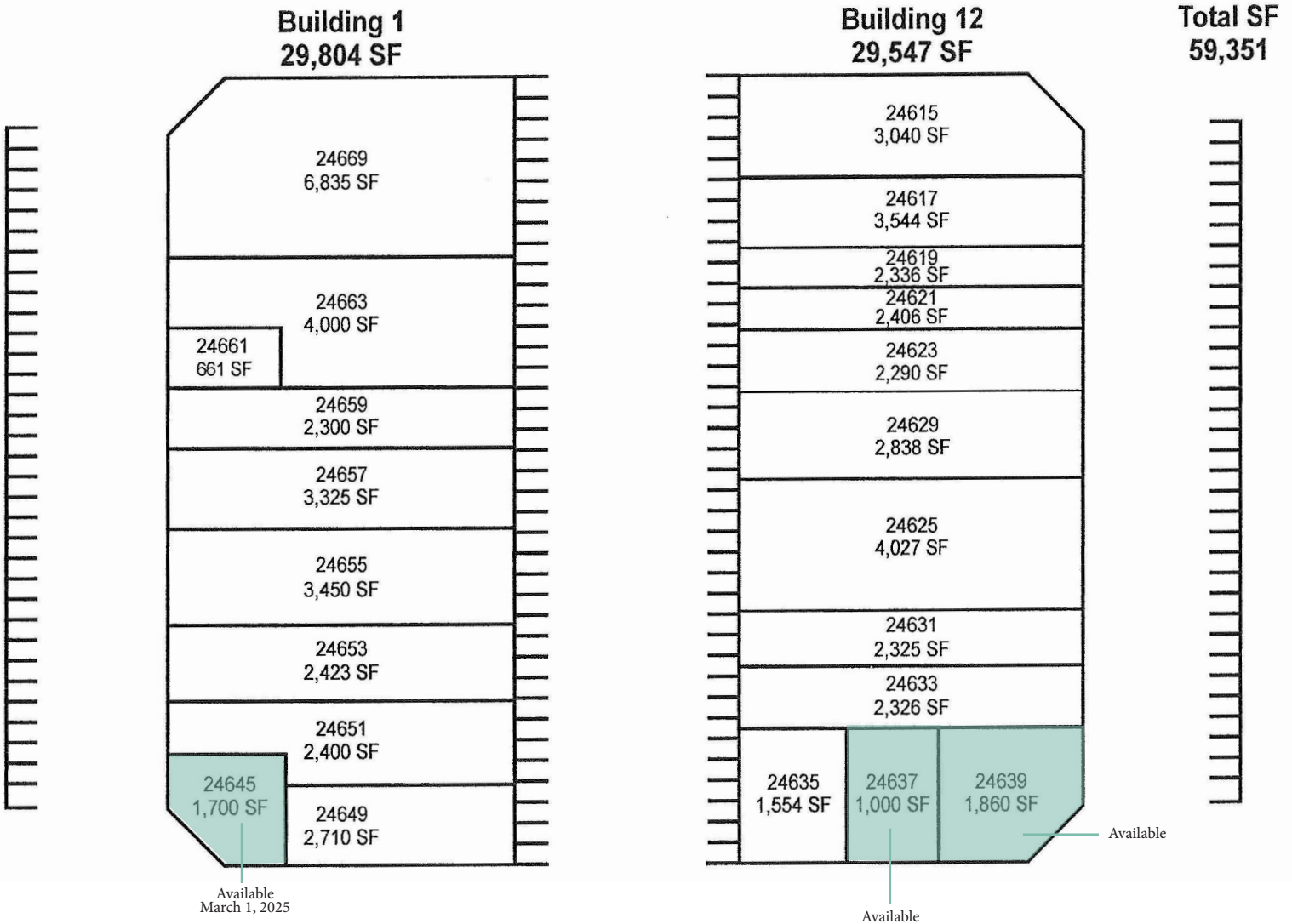
1,700 - 2,860 SF Available

24615-24669 Halsted Road, Farmington Hills, MI

For Lease

Site Plan

Halsted Road



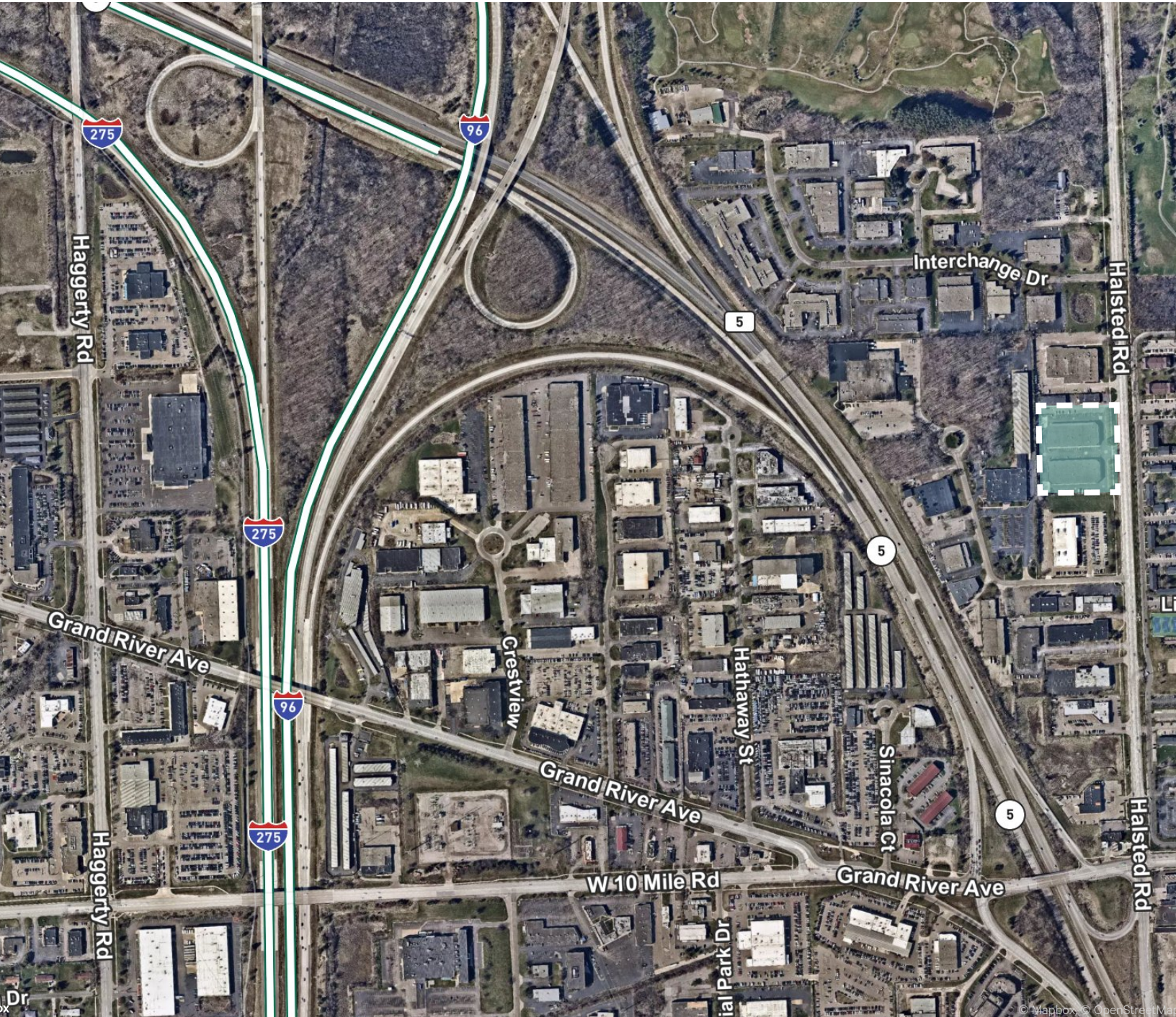
Property Features

- + 1,700 - 2,860 SF Available
- + 16' Ceiling Clear Height in Shop Area
- + Flexible Layouts and Rates
- + Main Road Frontage/Signage
- + Easy Access to I-275, I-96, I-696 and M-5
- + Professionally Maintained
- + Op/Ex Estimates: \$2.58 PSF

1,700 - 2,860 SF Available
24615-24669 Halsted Road, Farmington Hills, MI

For Lease

Property Aerial



1,700 - 2,860 SF Available

24615-24669 Halsted Road, Farmington Hills, MI

For Lease

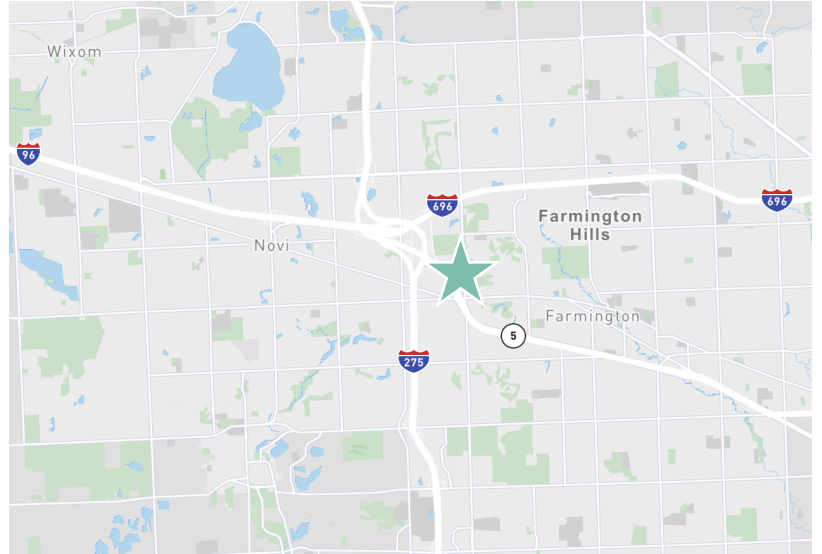
Property Overview

Oakland

County

1,700-2,860

Available Square Footage



LI-Light Industrial

Zoning

Year Built:	1983	Parking Ratio:	2.5/1,000
Total Building Size	59,351 SF (2 Buildings)	HVAC:	Gas forced air
Total Available:	2,860 SF	Power:	Ample
Available Office:	To-Suit	Taxes:	\$1.61 PSF (2022)
Available Shop:	To-Suit	Lighting:	Recessed
Acreage:	3.42	Restrooms:	M/W
Construction:	Masonry	Grade Level Doors:	One (1) per unit
Roof:	Rubber Membrane	Rail:	No
Floors:	6" concrete	Sprinklers:	No
Ceiling Height:	16'	Lease Rate:	\$7.75 NNN

Contact Us

Philip Sprague

Vice President

+1 248 351 2032

philip.sprague@cbre.com

© 2024 CBRE, Inc. All rights reserved. This information has been obtained from sources believed reliable, but has not been verified for accuracy or completeness. You should conduct a careful, independent investigation of the property and verify all information. Any reliance on this information is solely at your own risk. CBRE and the CBRE logo are service marks of CBRE, Inc. All other marks displayed on this document are the property of their respective owners, and the use of such logos does not imply any affiliation with or endorsement of CBRE. Photos herein are the property of their respective owners. Use of these images without the express written consent of the owner is prohibited.