



STORE PLANNING
DEPARTMENT
P.O. BOX 3165
HARRISBURG, PA 17105
(717) 761-2633

STORE #
7836 NEW

RITE AID PHARMACY
1401 W TILGMAN STREET
ALLENTOWN, PA

DRAWING STATUS

DESIGN PHASE CONSTRUCTION PHASE
FIELD VERIFIED REVISION

PROJECT TYPE

FREE STANDING DOWNTOWN
SHOPPING CENTER MALL

NEW STORE GENERAL RESET
EXPANSION MINOR REMODEL
REMODEL SPEC. PROJECT
RELOCATION Rm. REMODEL

PROJECT ATTRIBUTES

1-HOUR PHOTO LIQUOR
HAND DIP G.N.C.
DRIVE-THRU

SECURITY LEVEL

HIGH MEDIUM LOW

"HIGH" SECURITY DESIGNATION BUILDING WILL REQUIRE SECURITY SHUTTERS @ FRONT WINDOWS

BUILDING AREA (SQ. FT.)

EXISTING NEW

SALES FLOOR:	11788
PHARMACY:	867
WAITING AREA:	141
RECEIVING/STORAGE:	846
LOUNGE:	151
CONSULTATION RM.:	96
SPECIAL:	-0-
MEZZANINE:	661
RESTROOMS:	185
SUB TENANT:	-0-
RITE AID TOTAL:	14074
OVERALL TOTAL:	14564

FIXTURES (LINEAL FEET)

SALES SHELVING	1573
FLOOR LININEB	-0-
TOTAL	1573

MERCHANDISING (LINEAL FT.)

QUADRANT 1:	-0-
QUADRANT 2:	-0-
QUADRANT 3:	-0-
TOTAL:	-0-

DIRECTOR OF CONSTRUCTION

RAY GARGANIO

REG. CONSTRUCTION MANAGER

MIKE GRAGILLA

DRAWN BY: IS DATE: 11/14/05

CHECKED BY: HY SCALE: AS NOTED

STORE #

7836 NEW

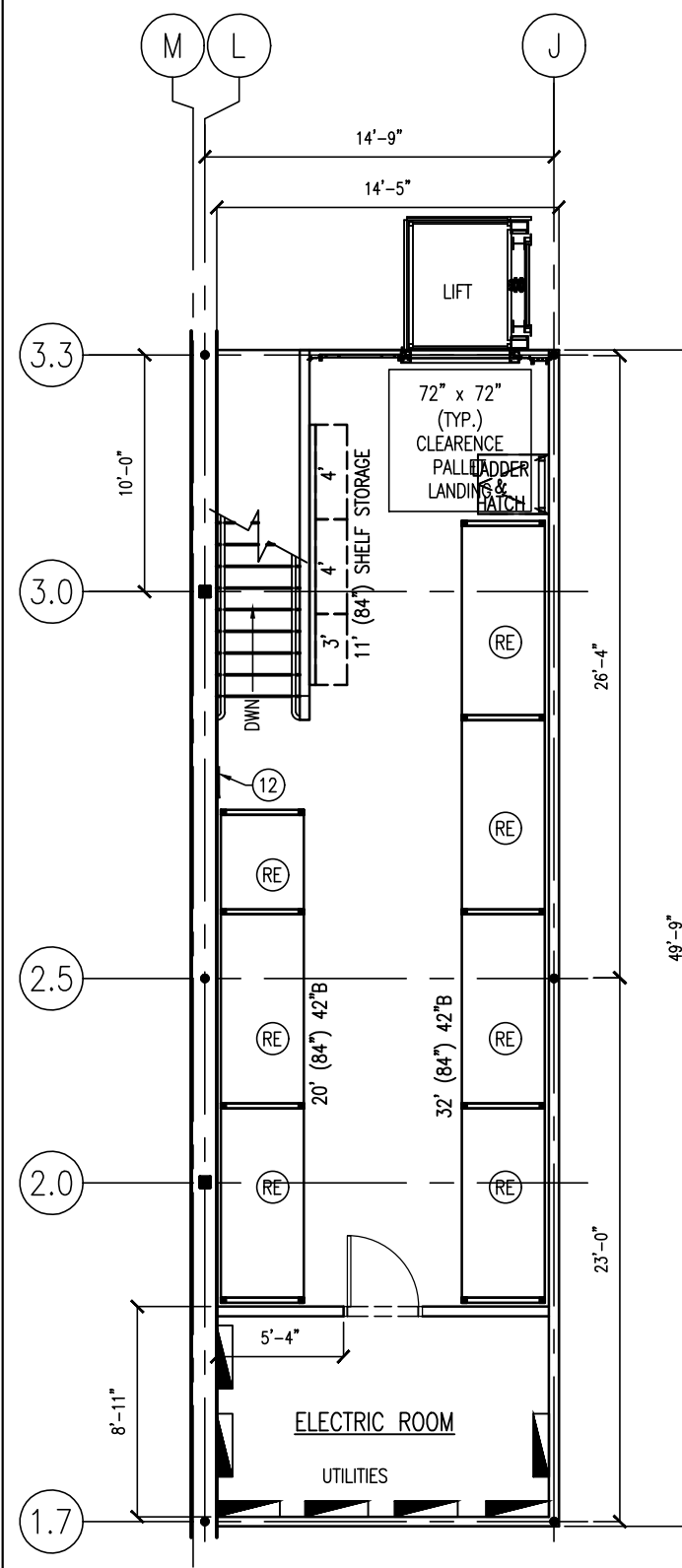
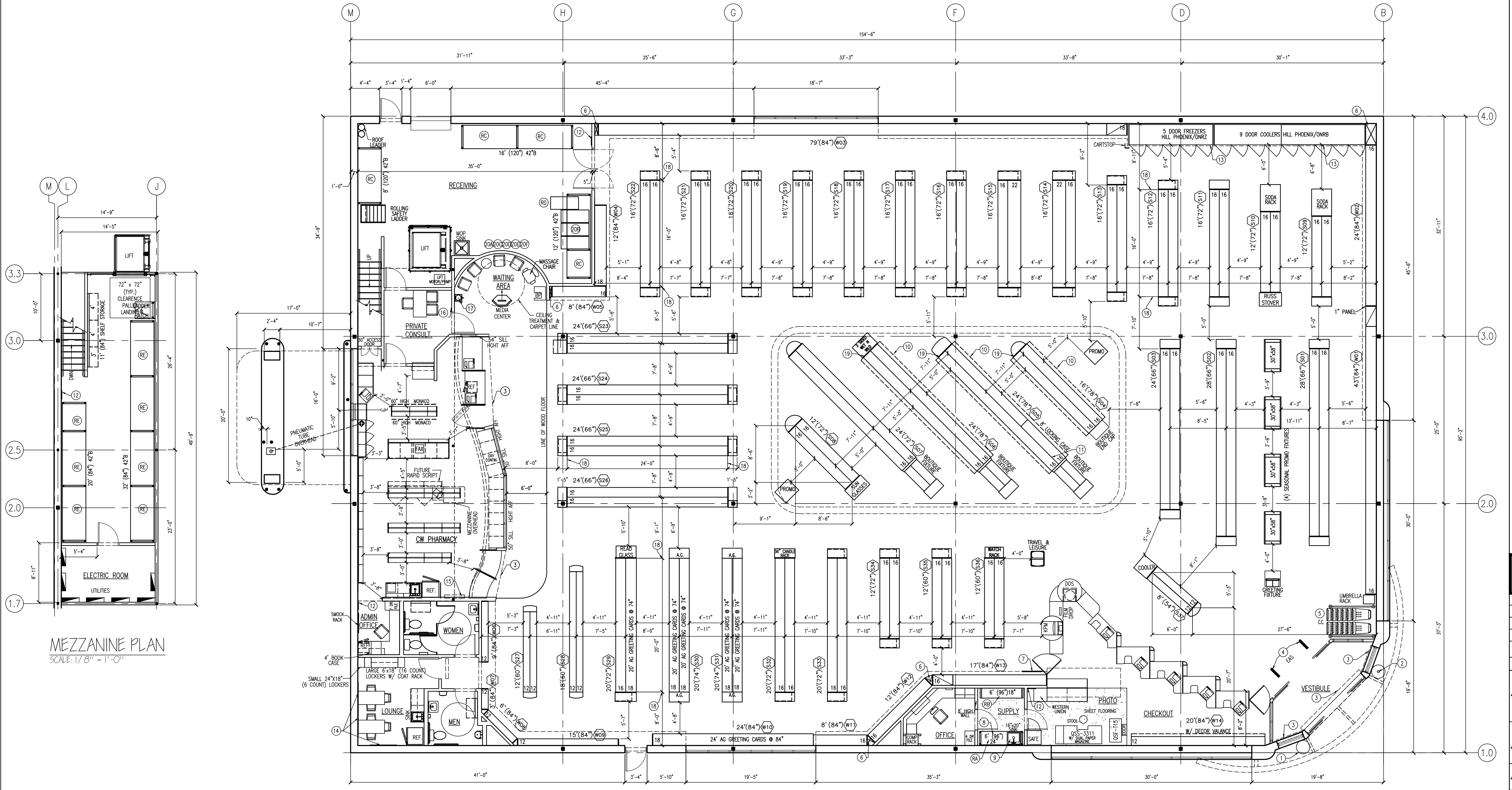
CONSTRUCTION NOTES

- TRASH CAN @ ENTRANCE
- SMOKERS STATION @ ENTRANCE
- ALL SECURITY GATES SUPPLIED AND INSTALLED BY GATE COMPANY
- EAS SECURITY PEDESTALS
- CART CORRAL - 2" CHROME RAILING ON TWO SIDES - 2" RASPBERRY McCUE BUMPER ON WALL RAILS & BUMPER SUPPLIED BY RITE AID & INSTALLED BY G.C.
- BOX CORNER - BUILT BY G.C. W/ MATERIAL PROVIDED BY RITE AID
- PASSPORT PHOTO SCREEN SUPPLIED BY RITE AID & INSTALLED BY G.C. @ BOTTOM OF SOFFIT
- 24" COUNTERTOP IN PHOTO TO BE @ 34" A.F.F. SUPPLIED BY RITE AID INSTALLED BY G.C.
- PHOTO SINK - PLUMBING CONNECTIONS PER CRITERIA DRAWINGS. DRAIN TAIL PIPE TO BE NO MORE THAN 16" A.F.F. FINAL CONNECTIONS TO WATER SUPPLY & SINK DRAIN BY G.C. FINAL CONNECTIONS TO PHOTO EQUIPMENT BY RITE AID
- GONDOLA MTD. LIGHTING SUPPLIED & INSTALLED BY G.C.
- MIRRORED GLASS (2) 4' SECTIONS SUPPLIED & INSTALLED BY G.C.
- EVAE MAP & PLEXI COVER PROVIDED BY RITE AID & INSTALLED BY G.C.
- STAINLESS STEEL CLOSURE PIECE MOUNTED TO TOP OF COOLERS/ FREEZERS TO CLOSE GAP BETWEEN TOP OF COOLERS/ FREEZERS & BOTTOM OF SOFFIT. PROVIDED & INSTALLED BY G.C.
- (3) 4"x4" BULLETIN BOARDS WALL MOUNTED IN LOUNGE
- (3) PHARMACIST LICENSE SHELVES MTD @ 42" 57" & 72" A.F.F. SUPPLIED AND INSTALLED BY DECOR COMPANY
- PHARMACY SECURITY KEY PAD
- WATER COOLER SUPPLIED & INSTALLED BY RITE AID
- DIMENSION LOCATES CENTER LINE OF GONDOLA UPRIGHT. ACTUAL LENGTH OF GONDOLA EQUALS NOMINAL LENGTH PLUS 2"
- CUSTOM EMP. MOUNTING BRACKET SUPPLIED BY SHELVING MANUFACTURE (NOT ALL ITEMS SHOWN)
- RECEIVING FIXTURES (NOT ALL ITEMS SHOWN)
 - 2 STACKS OF PLASTIC PALLETS
 - 20"W. x 40"L. x 15"H.
 - 4 BACKSTOCK CARTS
 - 24"W. x 52"L. x 66"H.
 - 2 MINI PALLET JACKS
 - 2 STOCK CARTS
 - 22"W. x 40"L. x 36.5"H.
 - REGULAR PALLET JACK
 - ONE 2 WHEEL "DOLLY"

KEY#	LNTH	HGHT	BASEDECK	FRONT-BASE	FRONT-ENDPANEL	BACK-BASE	BACK-ENDPANEL	COLOR	COMMENTS
S01	28"	66"	16/16	35x16	36x66	35x16	36x66	GREY	TELESCOPING UPRIGHTS 4' OC
S02	28"	66"	16/16	35x16	36x66	35x16	36x66	GREY	TELESCOPING UPRIGHTS 4' OC
S03	24"	66"	16/16	35x16	36x66	35x16	36x66	GREY	TELESCOPING UPRIGHTS 4' OC
S04	16"	78"	16/16	80" BOUT ENDCAP W/ 20"x30" FRAME	80" BOUT ENDCAP W/ 20"x30" FRAME	RA 30" ROUND	30"x84" W/ 20"x30" FRAME	BR WHITE	W/ GONDOLA MTD LIGHTING BY G.C.
S05	24"	78"	16/16	4" BOUT DISPLAY W/ 60" BOUT ENDCAP	80" ENDPANEL W/ 20"x30" FRAME	VENDOR SUPPLIED	30"x84" W/ 20"x30" FRAME	BR WHITE	W/ GONDOLA MTD LIGHTING BY G.C. & 8" LOCKING CASE
S06	24"	78"	16/16	4" BOUT DISPLAY W/ 60" BOUT ENDCAP	80" ENDPANEL W/ 20"x30" FRAME	VENDOR SUPPLIED	30"x84" W/ 20"x30" FRAME	BR WHITE	W/ GONDOLA MTD LIGHTING BY G.C.
S07	24"	72"	16/16	4" BOUT DISPLAY W/ 60" BOUT ENDCAP	80" ENDPANEL W/ 20"x30" FRAME	RA 30" ROUND	30"x78" W/ 20"x30" FRAME	BR WHITE	(1) 78" UPRIGHT @ REAR GONDOLA
S08	12"	72"	16/16	SUN GLASSES	36x72	VENDOR SUPPLIED	30"x78" W/ 20"x30" FRAME	BR WHITE	(1) 78" UPRIGHT @ REAR GONDOLA
S09	12"	72"	16/16	35x16	36x72	SODA RACK	36x72	GREY	
S10	12"	72"	16/16	RUSSELL STOVER	36x72	SODA RACK	36x72	GREY	
S11	16"	72"	16/16	35x16	36x72	35x16	36x72	GREY	
S12	16"	72"	16/16	35x16	36x72	35x16	36x72	GREY	
S13	16"	72"	16/16	35x16	36x72	35x16	36x72	GREY	
S14	16"	72"	16/22	41x16	36x72	41x16	36x72	GREY	
S15	16"	72"	22/16	41x16	36x72	41x16	36x72	GREY	
S16	16"	72"	16/16	35x16	36x72	35x16	36x72	GREY	
S17	16"	72"	16/16	35x16	36x72	35x16	36x72	GREY	
S18	16"	72"	16/16	35x16	36x72	35x16	36x72	GREY	
S19	16"	72"	16/16	35x16	36x72	35x16	36x72	GREY	
S20	16"	72"	16/16	35x16	36x72	35x16	36x72	GREY	
S21	16"	72"	16/16	35x16	36x72	35x16	36x72	GREY	
S22	16"	72"	16/16	35x16	36x72	35x16	36x72	GREY	
S23	24"	66"	16/16	RA WOOD BASE	36x66 SPECIAL	RA WOOD BASE	36x66 SPECIAL	GREY	G.C. TO CUT WOOD BASE AROUND COLUMN
S24	24"	66"	16/16	35x16	24x66	35x16	24x66	GREY	
S25	24"	66"	16/16	35x16	24x66	35x16	24x66	GREY	
S26	24"	66"	16/16	RA WOOD BASE	36x66 SPECIAL	RA WOOD BASE	36x66 SPECIAL	GREY	G.C. TO CUT WOOD BASE AROUND COLUMN
S27	12"	60"	12/12	RA WOOD		RA WOOD			WOOD FIXT FROM RA FDC
S28	18"	60"	12/12	RA WOOD		RA WOOD			WOOD FIXT FROM RA FDC
S29	20"	72"	18/18	READING GLASSES	36x72	37x16	30x72	GREY	20" GREETING CARDS @ 74" ON 18" BD
S30	20"	74"	18/18	G.C.	G.C.	G.C.	G.C.		GREETING CARDS FIXTURE

KEY#	LNTH	HGHT	BASEDECK	FRONT-BASE	FRONT-ENDPANEL	BACK-BASE	BACK-ENDPANEL	COLOR	COMMENTS
S31	20"	74"	18/18	G.C.	G.C.	G.C.	G.C.		GREETING CARDS FIXTURE
S32	20"	72"	16/16	CANDLE RACK	36x72	35x16	30x72	GREY	
S33	20"	72"	16/16	35x16	36x72	35x16	30x72	GREY	
S34	12"	72"	16/16	35x16	36x72	35x16	30x72	GREY	
S35	12"	60"	16/16	35x16	36x60	35x16	30x60	GREY	
S36	12"	60"	16/16	35x16	36x60	35x16	30x60	GREY	
S37	8"	84"	12/12	WATCH RACK	36x60	35x16	30x54	GREY	
W01	43"	84"	16	RA 30" ROUND					
W02	24"	84"	16						
W03	79"	84"	18						
W04	12"	84"	18						
W05	8"	84"	18						
W06	9"	84"	12						
W07	3"	84"	12						
W08	6"	84"	12						
W09	15"	84"	12						
W10	24"	84"	18						
W11	8"	84"	16						
W12	12"	84"	16						
W13	17"	84"	16						
W14	20"	84"	12						

EQUIPMENT-NUMBER	RACKING LEGEND				
	LWR-SHELF FRONT/REAR-(1)BEAM	CNTR-SHELF FRONT/REAR-(2)BEAM	TOP-SHELF FRONT/REAR-(2)BEAM	LWR-REAR-(1)BEAM	MID-REAR-(1)BEAM
RA	14" A.F.F.	34" A.F.F.	72" A.F.F.		
RB	6" A.F.F.	40" A.F.F.	74" A.F.F.		
RC	62" A.F.F.	92" A.F.F.	120" A.F.F.	22" A.F.F.	44" A.F.F.
RD	76" A.F.F.	94" A.F.F.	112" A.F.F.	22" A.F.F.	44" A.F.F.
RE	8" A.F.F.	50" A.F.F.			



MEZZANINE PLAN
SCALE: 1/8" = 1'-0"

FIXTURE PLAN
SCALE: 1/8" = 1'-0"

"CW" DECOR